
ITALGROUP SRL

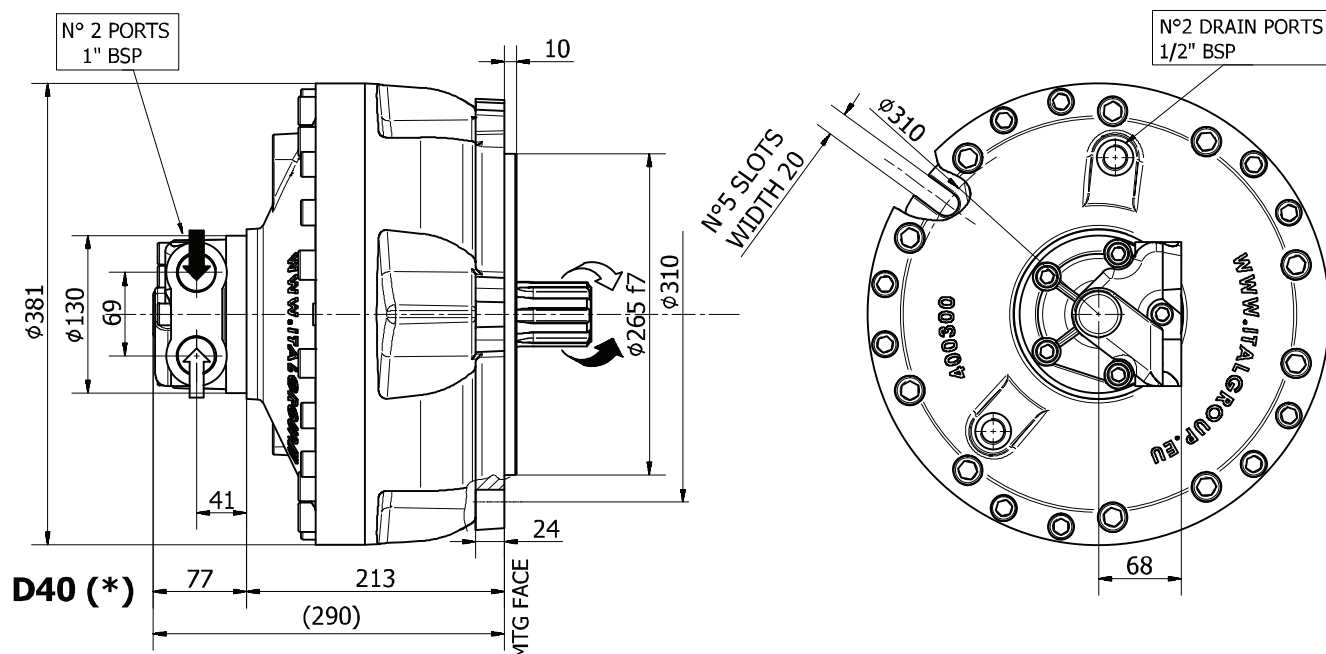
HCD SERIES - HCD3

GENERAL CATALOGUE

INDEX - HCD3

<u>HCD3 - INSTALLATION DRAWING</u>	Pag	60 - 61
<u>HCD3/G2 - INSTALLATION DRAWING</u>	"	62 - 63
<u>HCD3/G4 - INSTALLATION DRAWING</u>	"	64 - 65
<u>HCD3 - PERFORMANCE DIAGRAMS</u>	"	66 - 69
<u>HCD3 - ORDERING CODE</u>	"	70

INSTALLATION DRAWING



TECHNICAL DATA

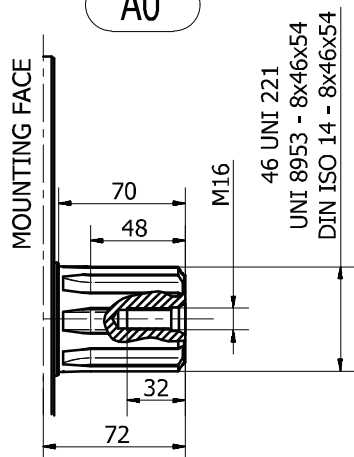
		350	400	500	600	700	800
DISPLACEMENT	[cc]	352	426	486	595	689	792
SPECIFIC TORQUE	[Nm/bar]	5,60	6,78	7,73	9,47	11	12,6
MAX. CONT. PRESSURE	[bar]	300	300	300	300	275	275
HYDROSTATIC TEST PRESSURE	[bar]	450	450	450	450	420	420
MAX. CONT. SPEED	[rpm]	800	700	550	500	450	450
PEAK SPEED (***)	[rpm]	1050	900	850	800	800	750
MAX. CONT. POWER (****)	[kW]	98	102	102	102	102	102
MAX. CONT. POWER WITH FLUSHING	[kW]	142	142	142	142	142	142
MAX. CASE PRESSURE	[bar]	10	10	10	10	10	10
DRY WEIGHT	[kg]	92	92	92	92	92	92
TEMPERATURE RANGE (**)	[°C]	-30÷70	-30÷70	-30÷70	-30÷70	-30÷70	-30÷70

- (*) The standard distributor (D40) is shown. Please refer to distributors section (pag. 82-83) for different distributor interfaces.
- (**) Please refer to the hydraulic fluid recommendations (pag. 8-9).
- (***) Do not exceed maximum continuous power with flushing (pag. 11).
- (****) For motor operation with a continuous duty cycle at maximum continuous power the flushing is usually required. For more information please contact our technical department.

The data specified into the catalogue are for product description purpose only and must not be interpreted as warranted characteristics in legal sense. Italgrou S.r.l. reserves the right to implement modifications without notice. All partial or total reproduction and copy without written authorization of Italgrou S.r.l. is strictly forbidden.

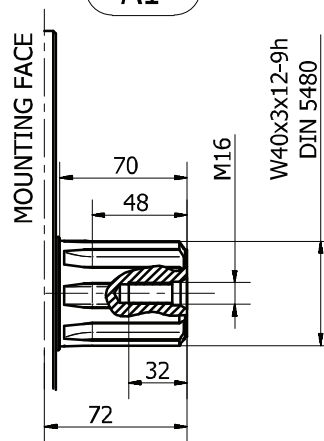
SHAFT CONFIGURATIONS

A0



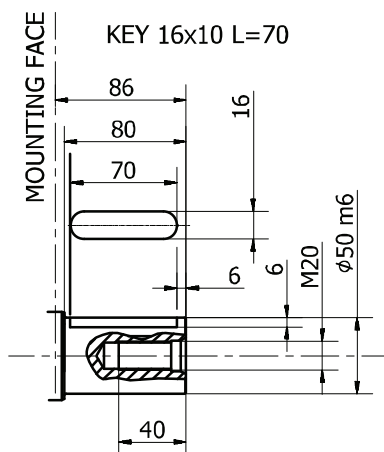
Available spline billet: **SB5**

A1

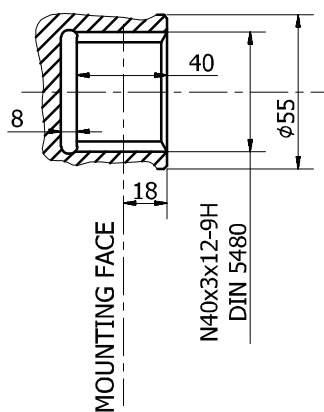


Available spline billet: **SB22**

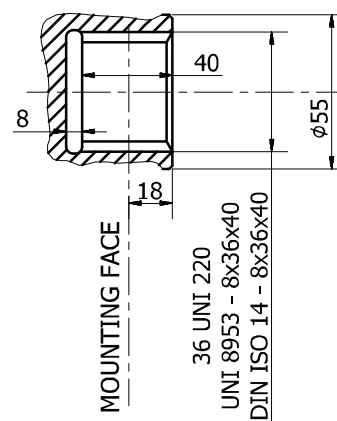
A2



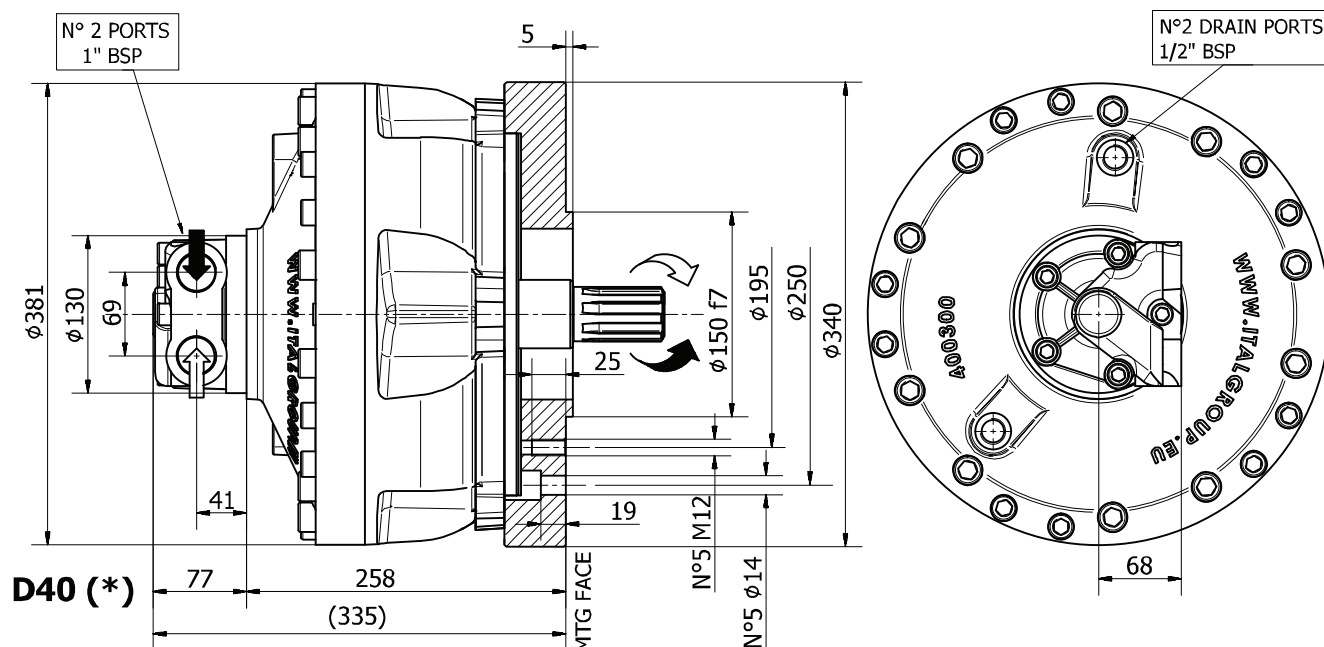
A3



A31



INSTALLATION DRAWING



TECHNICAL DATA

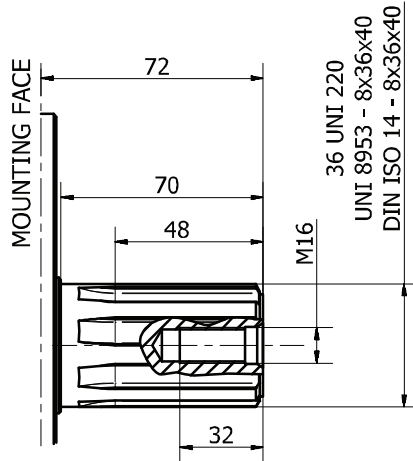
		350	400	500	600	700	800
DISPLACEMENT	[cc]	352	426	486	595	689	792
SPECIFIC TORQUE	[Nm/bar]	5,60	6,78	7,73	9,47	11	12,6
MAX. CONT. PRESSURE	[bar]	300	300	300	300	275	275
HYDROSTATIC TEST PRESSURE	[bar]	450	450	450	450	420	420
MAX. CONT. SPEED	[rpm]	800	700	550	500	450	450
PEAK SPEED (***)	[rpm]	1050	900	850	800	800	750
MAX. CONT. POWER (****)	[kW]	98	102	102	102	102	102
MAX. CONT. POWER WITH FLUSHING	[kW]	142	142	142	142	142	142
MAX. CASE PRESSURE	[bar]	10	10	10	10	10	10
DRY WEIGHT	[kg]	92	92	92	92	92	92
TEMPERATURE RANGE (**)	[°C]	-30÷70	-30÷70	-30÷70	-30÷70	-30÷70	-30÷70

- (*) The standard distributor (D40) is shown. Please refer to distributors section (pag. 82-83) for different distributor interfaces.
- (**) Please refer to the hydraulic fluid recommendations (pag. 8-9).
- (***) Do not exceed maximum continuous power with flushing (pag. 11).
- (****) For motor operation with a continuous duty cycle at maximum continuous power the flushing is usually required. For more information please contact our technical department.

The data specified into the catalogue are for product description purpose only and must not be interpreted as warranted characteristics in legal sense. Italgrou p S.r.l. reserves the right to implement modifications without notice. All partial or total reproduction and copy without written authorization of Italgrou p S.r.l. is strictly forbidden.

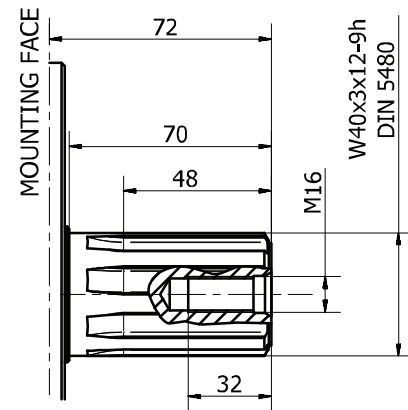
SHAFT CONFIGURATIONS

A0



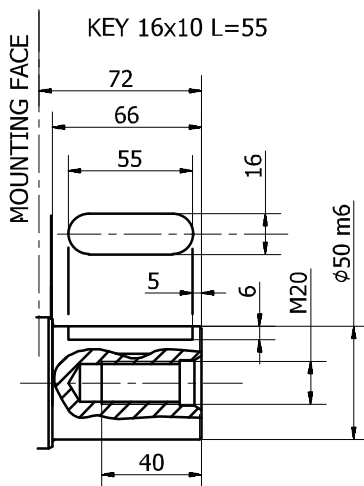
Available spline billet: **SB3**

A1

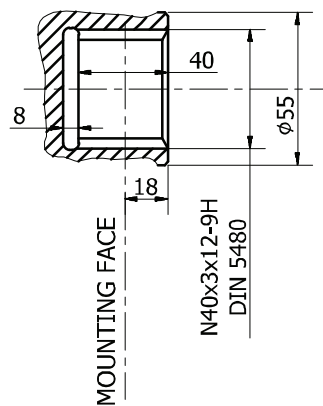


Available spline billet: **SB22**

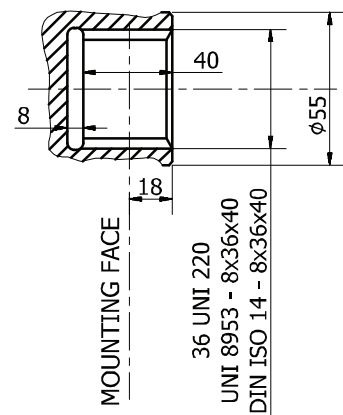
A2



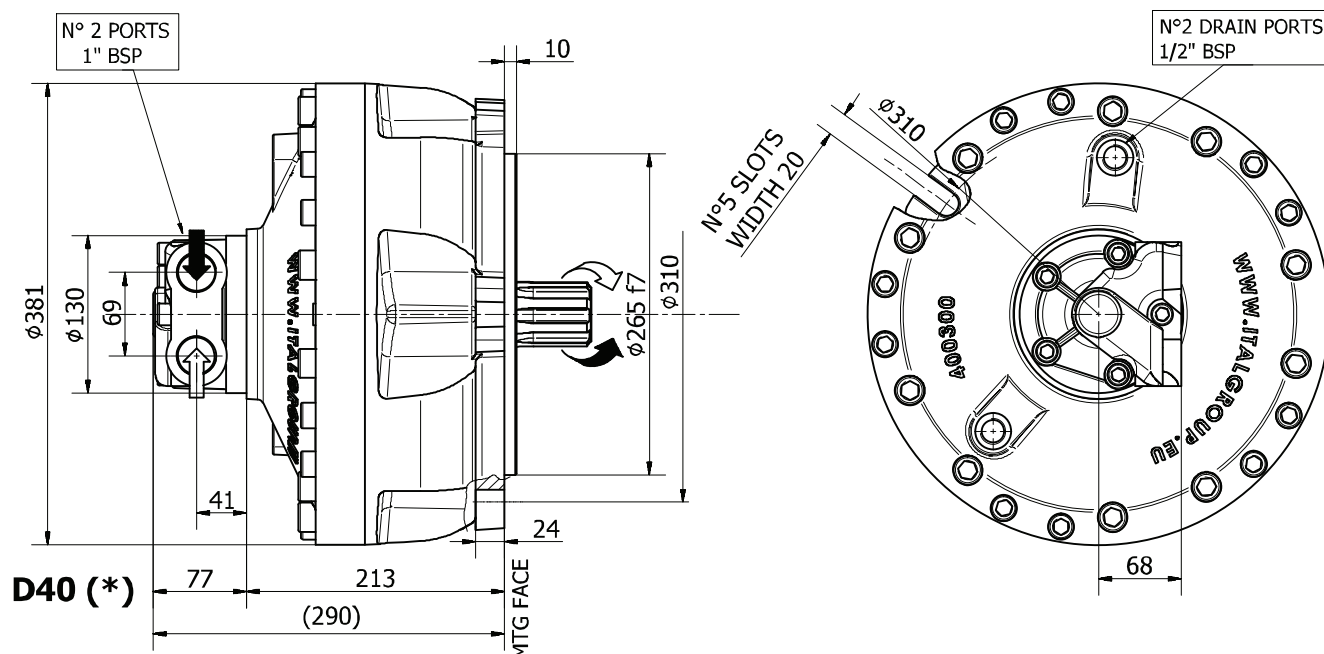
A3



A31



INSTALLATION DRAWING



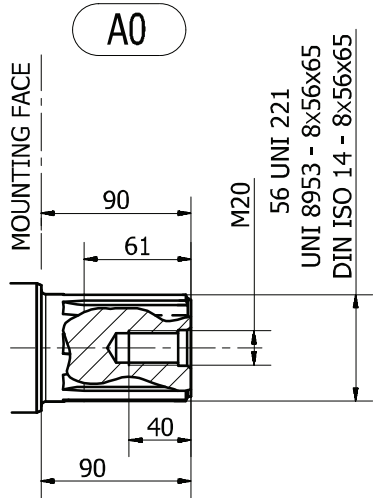
TECHNICAL DATA

		350	400	500	600	700	800
DISPLACEMENT	[cc]	352	426	486	595	689	792
SPECIFIC TORQUE	[Nm/bar]	5,60	6,78	7,73	9,47	11	12,6
MAX. CONT. PRESSURE	[bar]	300	300	300	300	275	275
HYDROSTATIC TEST PRESSURE	[bar]	450	450	450	450	420	420
MAX. CONT. SPEED	[rpm]	800	700	550	500	450	450
PEAK SPEED (***)	[rpm]	1050	900	850	800	800	750
MAX. CONT. POWER (****)	[kW]	98	102	102	102	102	102
MAX. CONT. POWER WITH FLUSHING	[kW]	142	142	142	142	142	142
MAX. CASE PRESSURE	[bar]	10	10	10	10	10	10
DRY WEIGHT	[kg]	92	92	92	92	92	92
TEMPERATURE RANGE (**)	[°C]	-30÷70	-30÷70	-30÷70	-30÷70	-30÷70	-30÷70

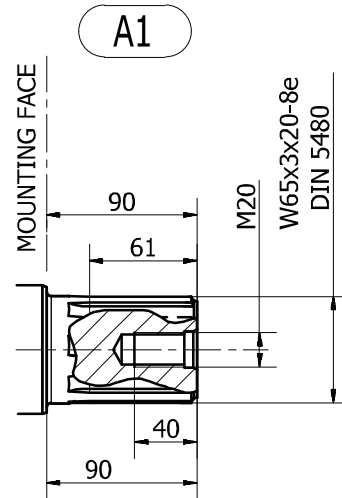
- (*) The standard distributor (D40) is shown. Please refer to distributors section (pag. 82-83) for different distributor interfaces.
- (**) Please refer to the hydraulic fluid recommendations (pag. 8-9).
- (***) Do not exceed maximum continuous power with flushing (pag. 11).
- (****) For motor operation with a continuous duty cycle at maximum continuous power the flushing is usually required. For more information please contact our technical department.

The data specified into the catalogue are for product description purpose only and must not be interpreted as warranted characteristics in legal sense. Italgrou S.r.l. reserves the right to implement modifications without notice. All partial or total reproduction and copy without written authorization of Italgrou S.r.l. is strictly forbidden.

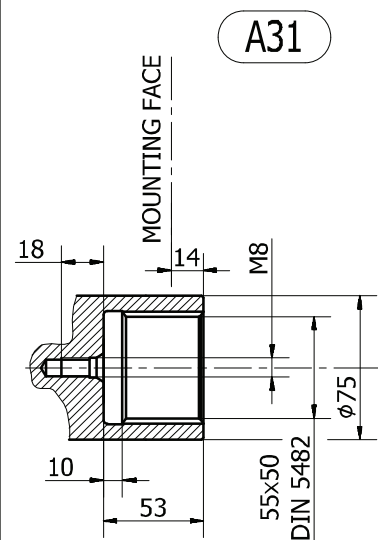
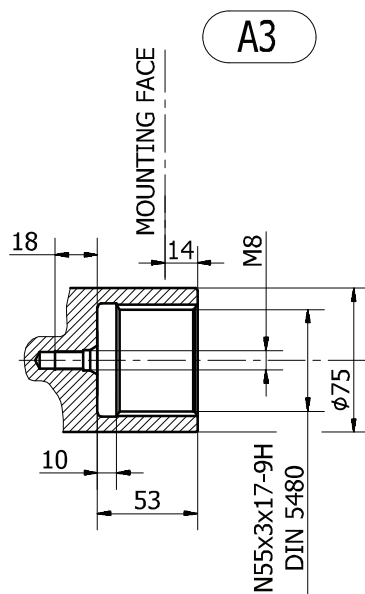
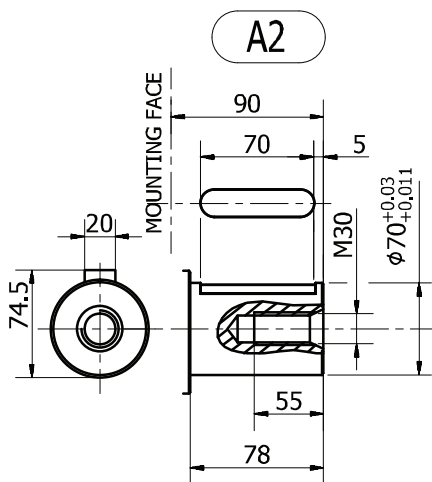
SHAFT CONFIGURATIONS



Available spline billet: (SB17)

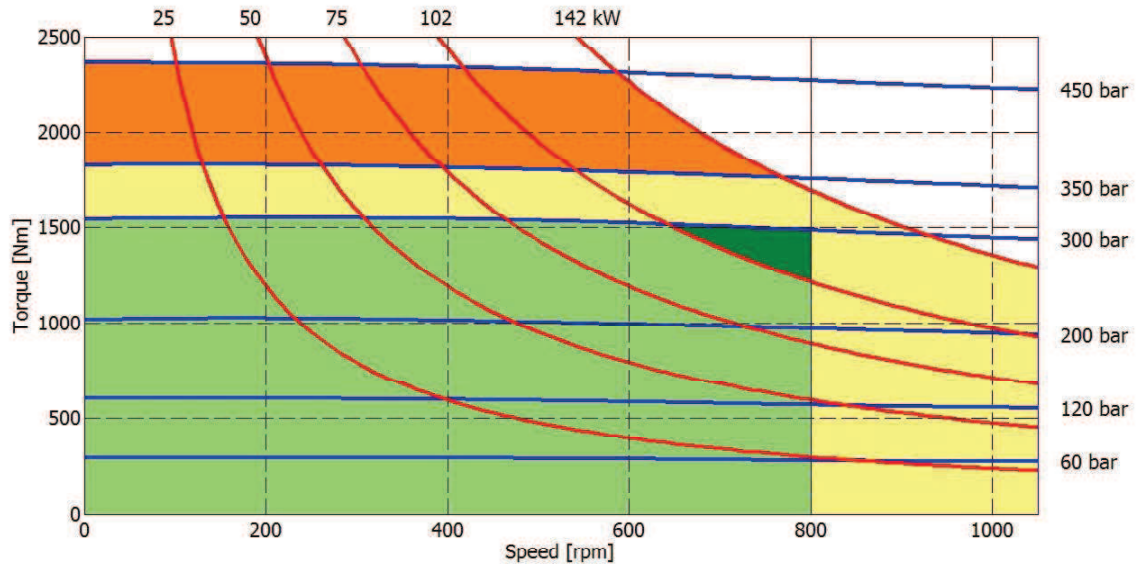


Available spline billet: (SB23)

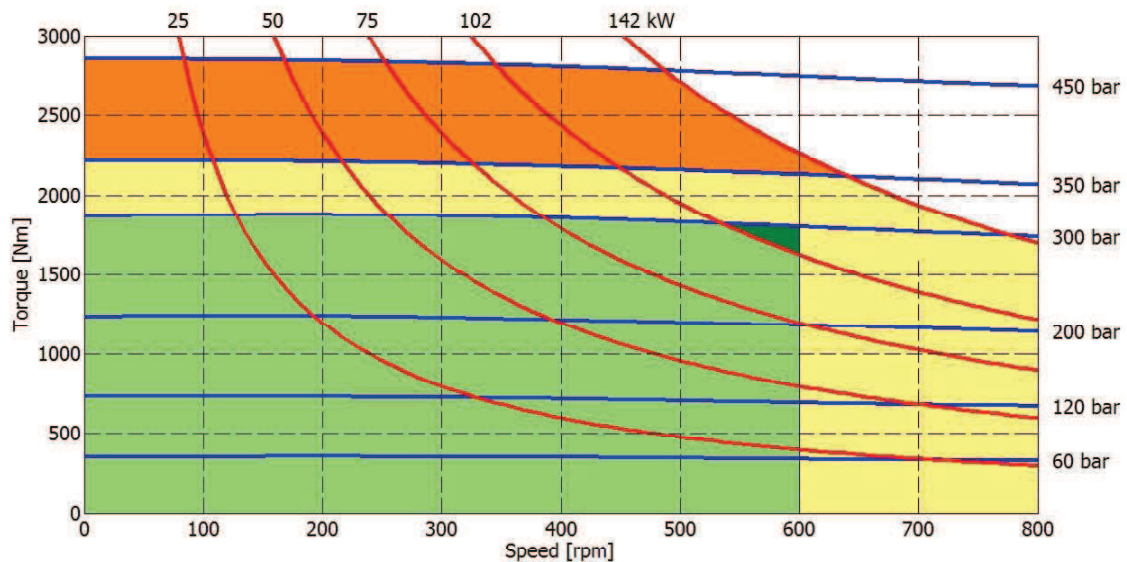


HCD3- PERFORMANCE DIAGRAMS

350 cc



400 cc



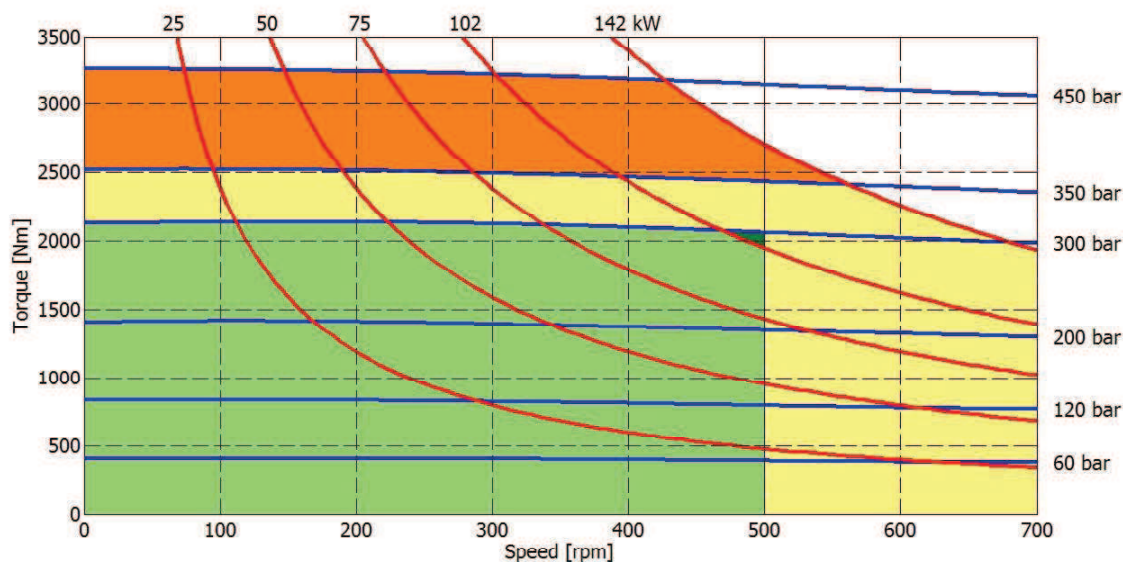
- Continuous operation
- Continuous operation with flushing or intermittent operation (see below for intermittent operation)
- Intermittent operation: permitted for a 15% of duty cycle, for 3 minutes maximum period
- Peak operation: permitted for very short periods (3-5 seconds every 10-15 minutes)

The above diagrams are referring to the hydraulic motor working with a fluid in ideal conditions (viscosity at 40 cSt). In case the working temperature increases and viscosity reach values under the recommended values (see hydraulic fluid recommendations) flushing must be performed or ISO oil grade must be changed. The working temperature must not overcome 70 °C.

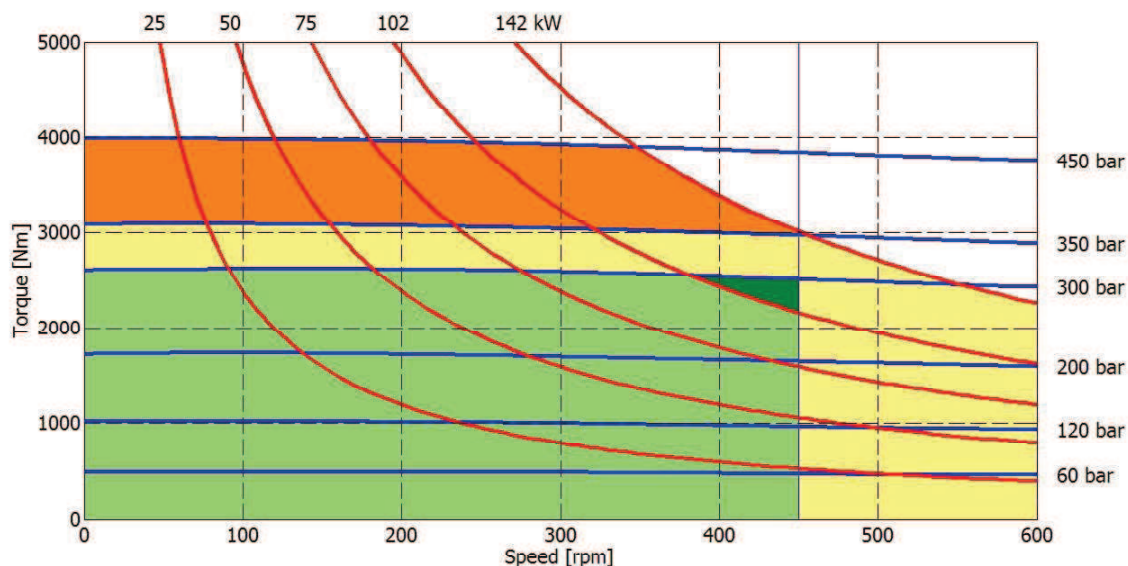
The data specified into the catalogue are for product description purpose only and must not be interpreted as warranted characteristics in legal sense. Italgrou S.r.l. reserves the right to implement modifications without notice. All partial or total reproduction and copy without written authorization of Italgrou S.r.l. is strictly forbidden.

HCD3- PERFORMANCE DIAGRAMS

500 cc



600 cc



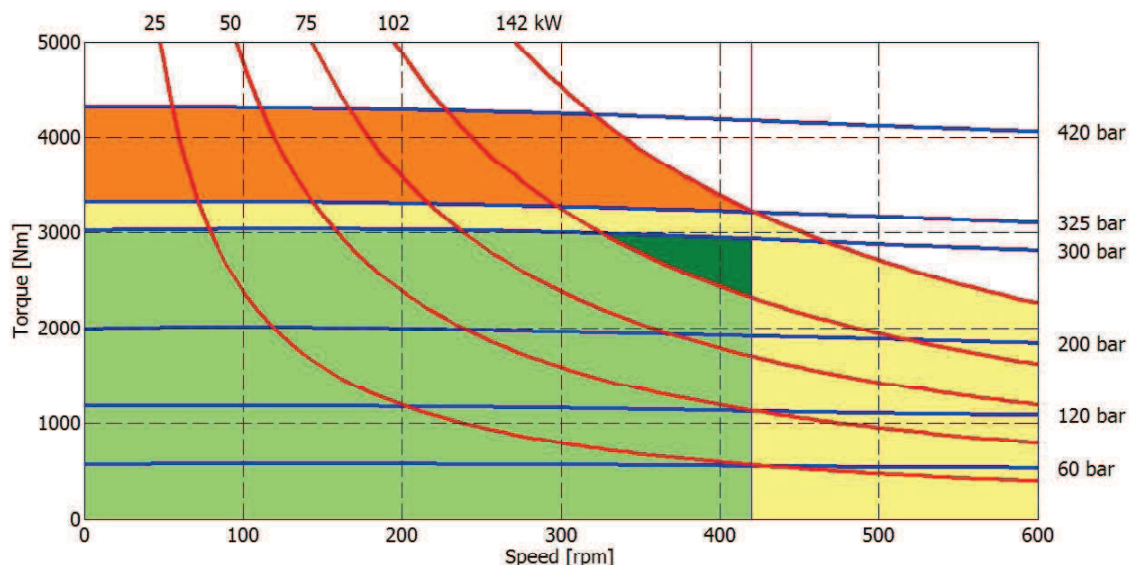
- Continuous operation
- Continuous operation with flushing or intermittent operation (see below for intermittent operation)
- Intermittent operation: permitted for a 15% of duty cycle, for 3 minutes maximum period
- Peak operation: permitted for very short periods (3-5 seconds every 10-15 minutes)

The above diagrams are referring to the hydraulic motor working with a fluid in ideal conditions (viscosity at 40 cSt). In case the working temperature increases and viscosity reach values under the recommended values (see hydraulic fluid recommendations) flushing must be performed or ISO oil grade must be changed. The working temperature must not overcome 70 °C.

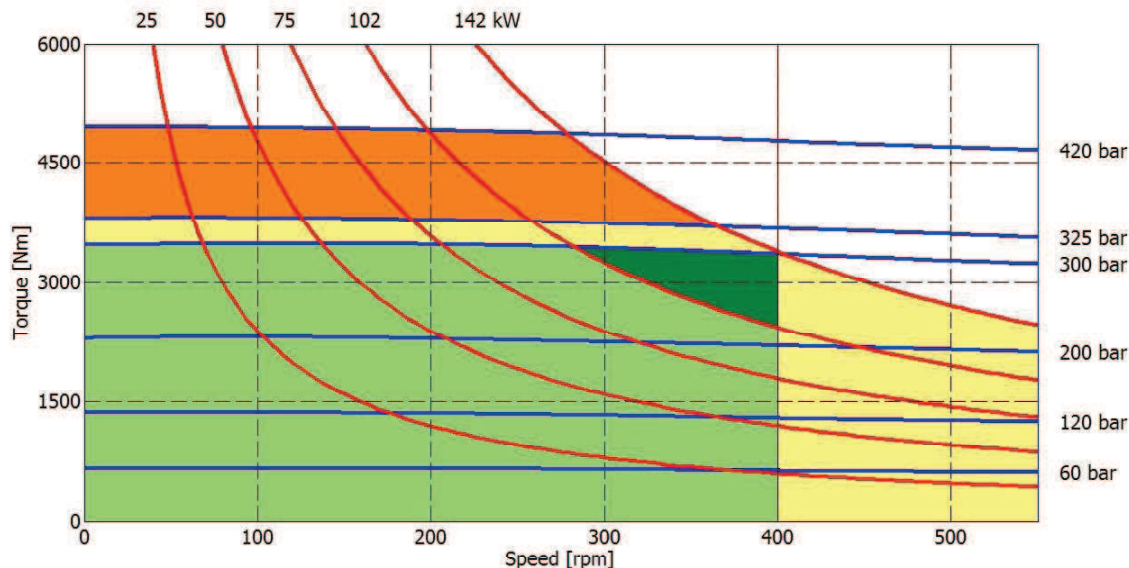
The data specified into the catalogue are for product description purpose only and must not be interpreted as warranted characteristics in legal sense. Italgroup S.r.l. reserves the right to implement modifications without notice. All partial or total reproduction and copy without written authorization of Italgroup S.r.l. is strictly forbidden.

HCD3- PERFORMANCE DIAGRAMS

700 cc



800 cc

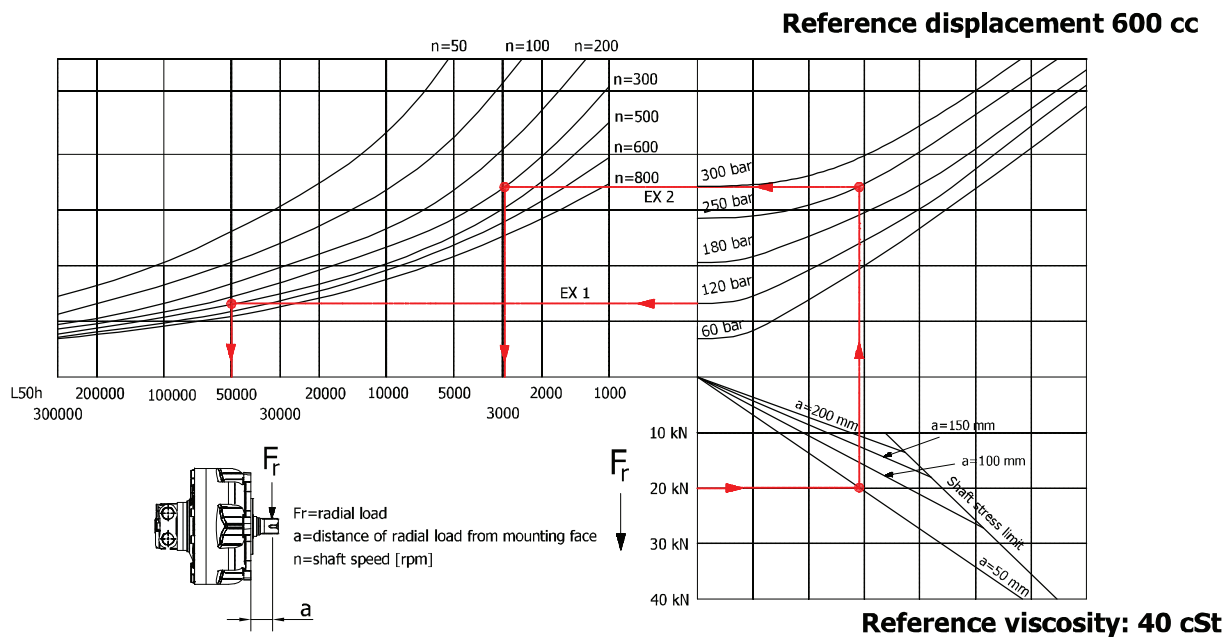


- Continuous operation
- Continuous operation with flushing or intermittent operation (see below for intermittent operation)
- Intermittent operation: permitted for a 15% of duty cycle, for 3 minutes maximum period
- Peak operation: permitted for very short periods (3-5 seconds every 10-15 minutes)

The above diagrams are referring to the hydraulic motor working with a fluid in ideal conditions (viscosity at 40 cSt). In case the working temperature increases and viscosity reach values under the recommended values (see hydraulic fluid recommendations) flushing must be performed or ISO oil grade must be changed. The working temperature must not overcome 70 °C.

The data specified into the catalogue are for product description purpose only and must not be interpreted as warranted characteristics in legal sense. ItalgrouP S.r.l. reserves the right to implement modifications without notice. All partial or total reproduction and copy without written authorization of ItalgrouP S.r.l. is strictly forbidden.

BEARING LIFE



Example:

We suppose (EX1): $p=120$ [bar], $n=500$ [rpm]; we obtain an average lifetime of 50000 [h].

If we suppose (EX2): $F_r=20$ [kN], $a=50$ [mm], $n=300$ [rpm] and $p=250$ [bar] we obtain an average lifetime of 2900 [h].

HCD3 - ORDERING CODE

HCD		3	---	--	--	--	--	--	SB -
-----	--	---	-----	----	----	----	----	----	------

DISPLACEMENT

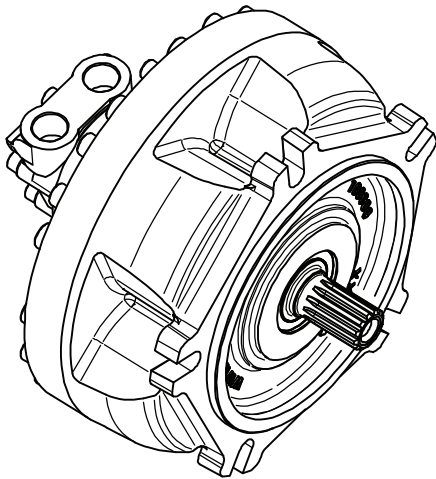
350 400 500 600
700 800

INTERCHANGEABILITY

/G2
/G4

SHAFT

A0 A1
A2 A3
A31



TACHOMETER

J (*)
TA
TB
TT1
TQ1
EST
EST30
EST31

See pag. 84-87

(*) Tachometer predisposition

SPECIAL FEATURES

HSM
See pag. 7

MP
SPSL
HPS
CCW
See pag. 23

Z - -
Italgroup
internal code

DISTRIBUTOR

D31B D36B
D310B D40
D47 D416
D90

See pag. 82-83

SPLINE BILLET

SB3 SB5
SB17 SB22
SB23

See pag. 88