
ITALGROUP SRL

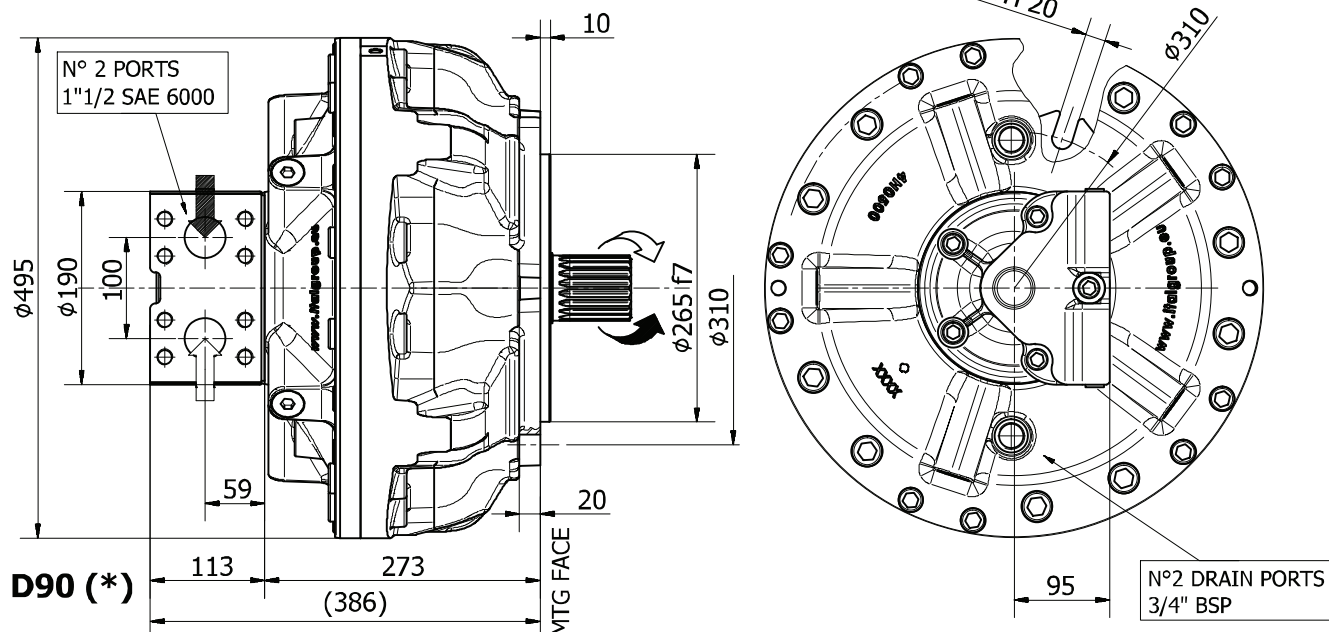
HCD SERIES - HCD5

GENERAL CATALOGUE

INDEX - HCD5

<u>HCD5 - INSTALLATION DRAWING</u>	Pag	72 - 73
<u>HCD5 / G4 - INSTALLATION DRAWING</u>	"	74 - 75
<u>HCD5 - PERFORMANCE DIAGRAMS</u>	"	76 - 79
<u>ORDERING CODE</u>	"	80

INSTALLATION DRAWING



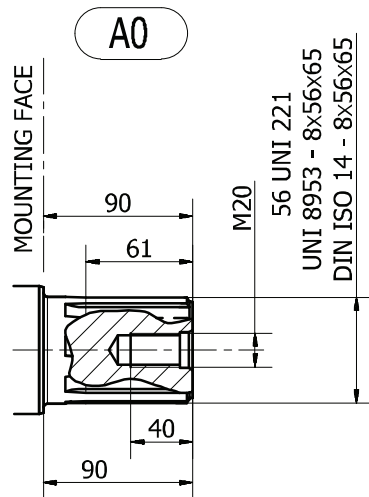
TECHNICAL DATA

		800	1000	1200	1300	1500	1600
DISPLACEMENT	[cc]	837	1060	1200	1308	1462	1625
SPECIFIC TORQUE	[Nm/bar]	13,3	16,9	19,1	20,8	23,3	25,9
MAX. CONT. PRESSURE	[bar]	300	300	300	300	275	275
HYDROSTATIC TEST PRESSURE	[bar]	450	450	450	450	420	420
MAX. CONT. SPEED	[rpm]	580	500	500	470	470	420
PEAK SPEED (***)	[rpm]	720	700	650	620	620	620
MAX. CONT. POWER (****)	[kW]	150	150	150	150	150	150
MAX. CONT. POWER WITH FLUSHING	[kW]	210	210	210	210	210	210
MAX. CASE PRESSURE	[bar]	10	10	10	10	10	10
DRY WEIGHT	[kg]	190	190	190	190	190	190
TEMPERATURE RANGE (**)	[°C]	-30÷70	-30÷70	-30÷70	-30÷70	-30÷70	-30÷70

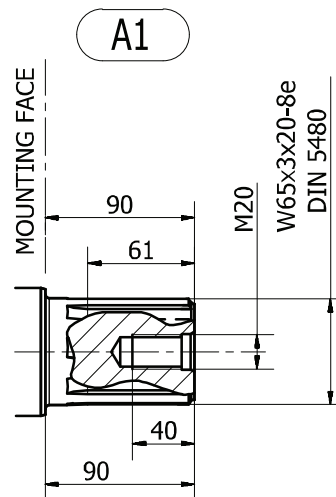
- (*) The standard distributor (D90) is shown. Please refer to distributors section (pag. 82-83) for different distributor interfaces.
- (**) Please refer to the hydraulic fluid recommendations (pag. 8-9).
- (***) Do not exceed maximum continuous power with flushing (pag. 11).
- (****) For motor operation with a continuous duty cycle at maximum continuous power the flushing is usually required. For more information please contact our technical department.

The data specified into the catalogue are for product description purpose only and must not be interpreted as warranted characteristics in legal sense. Italgrou S.r.l. reserves the right to implement modifications without notice. All partial or total reproduction and copy without written authorization of Italgrou S.r.l. is strictly forbidden.

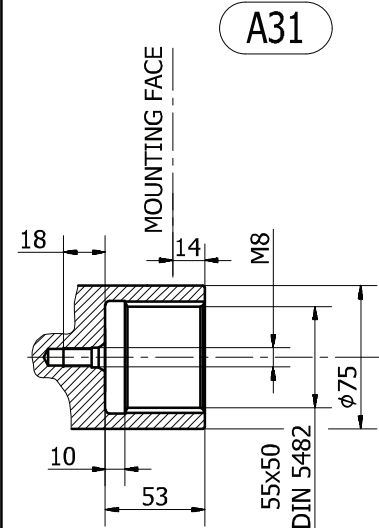
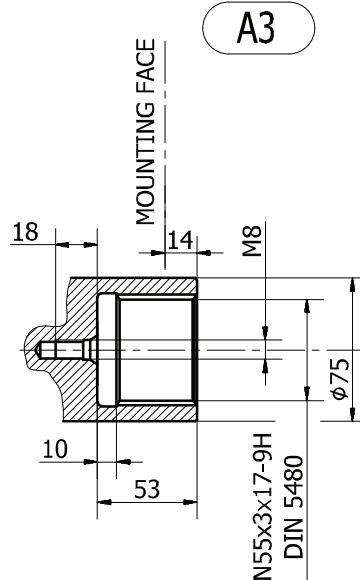
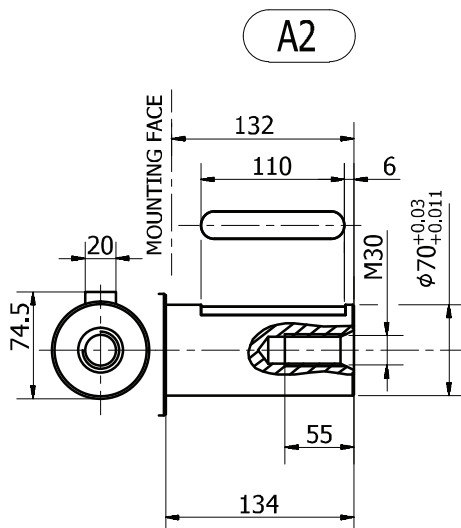
SHAFT CONFIGURATIONS



Available spline billet: (SB17)

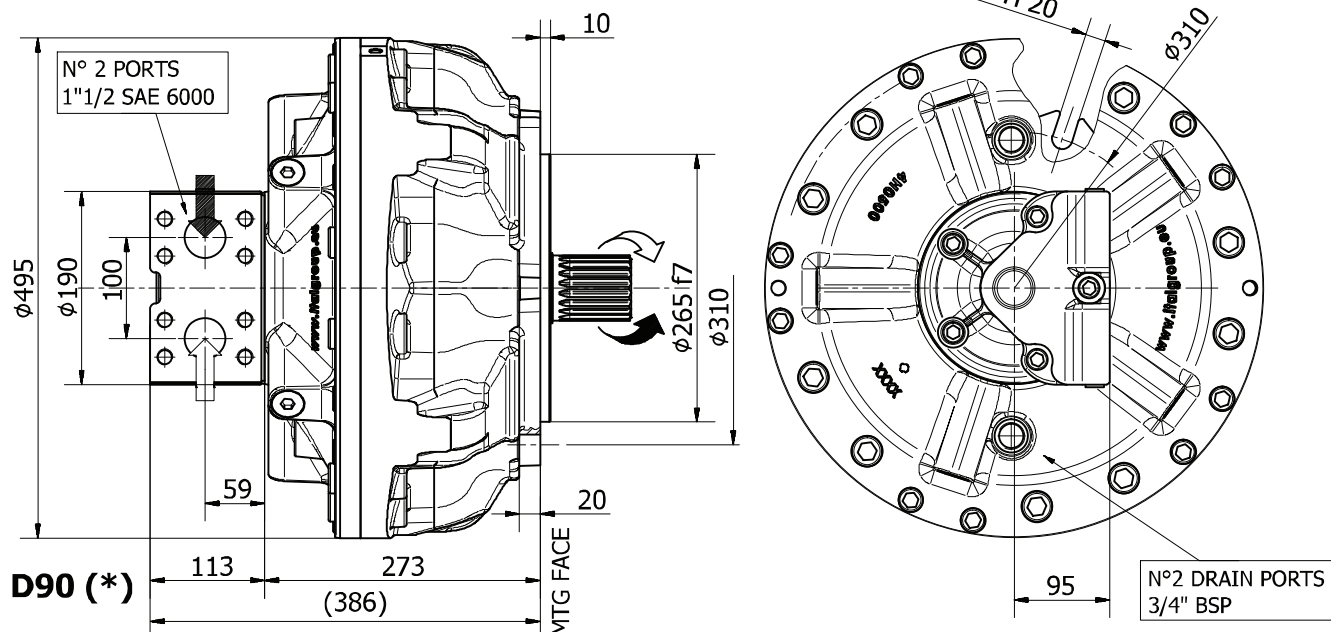


Available spline billet: (SB23)



The data specified into the catalogue are for product description purpose only and must not be interpreted as warranted characteristics in legal sense. Italgroup S.r.l. reserves the right to implement modifications without notice. All partial or total reproduction and copy without written authorization of Italgroup S.r.l. is strictly forbidden.

INSTALLATION DRAWING



TECHNICAL DATA

		800	1000	1200	1300	1500	1600
DISPLACEMENT	[cc]	837	1060	1200	1308	1462	1625
SPECIFIC TORQUE	[Nm/bar]	13,3	16,9	19,1	20,8	23,3	25,9
MAX. CONT. PRESSURE	[bar]	300	300	300	300	275	275
HYDROSTATIC TEST PRESSURE	[bar]	450	450	450	450	420	420
MAX. CONT. SPEED	[rpm]	580	500	500	470	470	420
PEAK SPEED (***)	[rpm]	720	700	650	620	620	620
MAX. CONT. POWER (****)	[kW]	150	150	150	150	150	150
MAX. CONT. POWER WITH FLUSHING	[kW]	210	210	210	210	210	210
MAX. CASE PRESSURE	[bar]	10	10	10	10	10	10
DRY WEIGHT	[kg]	190	190	190	190	190	190
TEMPERATURE RANGE (**)	[°C]	-30÷70	-30÷70	-30÷70	-30÷70	-30÷70	-30÷70

- (*) The standard distributor (D90) is shown. Please refer to distributors section (pag. 82-83) for different distributor interfaces.
- (**) Please refer to the hydraulic fluid recommendations (pag. 8-9).
- (***) Do not exceed maximum continuous power with flushing (pag. 11).
- (****) For motor operation with a continuous duty cycle at maximum continuous power the flushing is usually required. For more information please contact our technical department.

The data specified into the catalogue are for product description purpose only and must not be interpreted as warranted characteristics in legal sense. Italgrou S.r.l. reserves the right to implement modifications without notice. All partial or total reproduction and copy without written authorization of Italgrou S.r.l. is strictly forbidden.

Technical drawing of the A0 mounting bracket. The drawing shows a side view of the bracket with the following dimensions and specifications:

- Dimensions:**
 - Overall width: 90
 - Distance from mounting face to center of hole: 61
 - Distance from mounting face to center of hole (bottom view): 90
 - Distance from center of hole to mounting face (bottom view): 40
- Mounting Face:** Indicated by a dashed line on the left.
- Thread:** M20
- Specifications:**
 - 56 UNI 221
 - UNI 8953 - 8x56x65
 - DIN ISO 14 - 8x56x65

A1

MOUNTING FACE

90

61

M20

W65x3x20-8e
DIN 5480

40

90

Technical drawing of a mounting bracket (A2) showing front, side, and top views with dimensions.

Front View (Left):

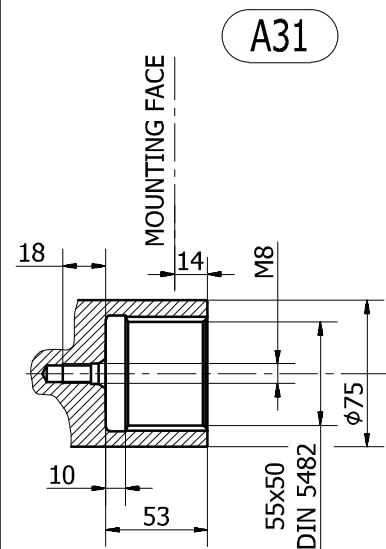
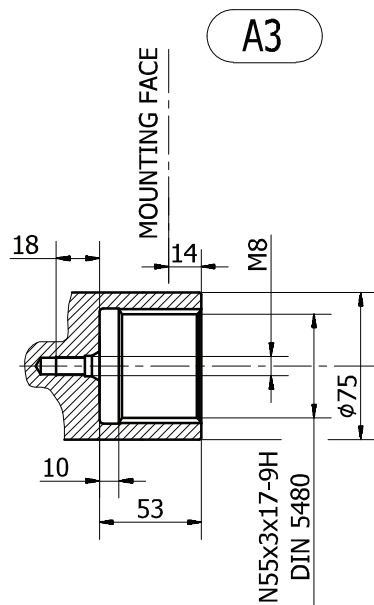
- Overall height: 74.5
- Flange width: 20

Side View (Right):

- Overall width: 90
- Mounting face width: 70
- Flange thickness: 5
- Thread specification: M30
- Threaded section diameter: $\phi 70^{+0.03}_{+0.011}$
- Internal slot width: 55
- Overall depth: 78

Top View (Bottom):

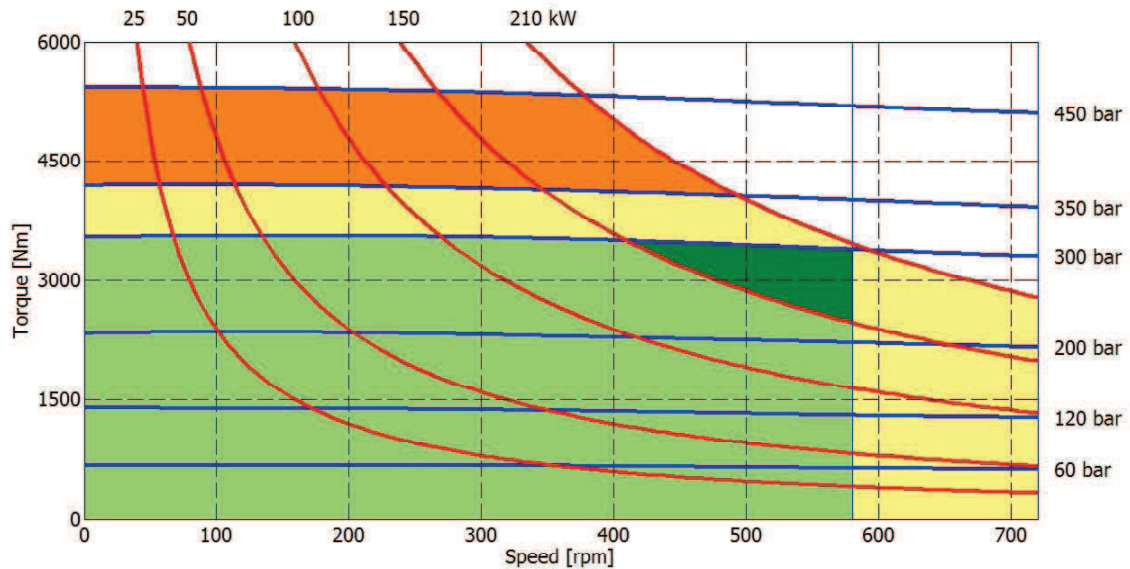
- Overall width: 90
- Mounting face width: 70
- Flange thickness: 5
- Thread specification: M30
- Threaded section diameter: $\phi 70^{+0.03}_{+0.011}$
- Internal slot width: 55
- Overall depth: 78



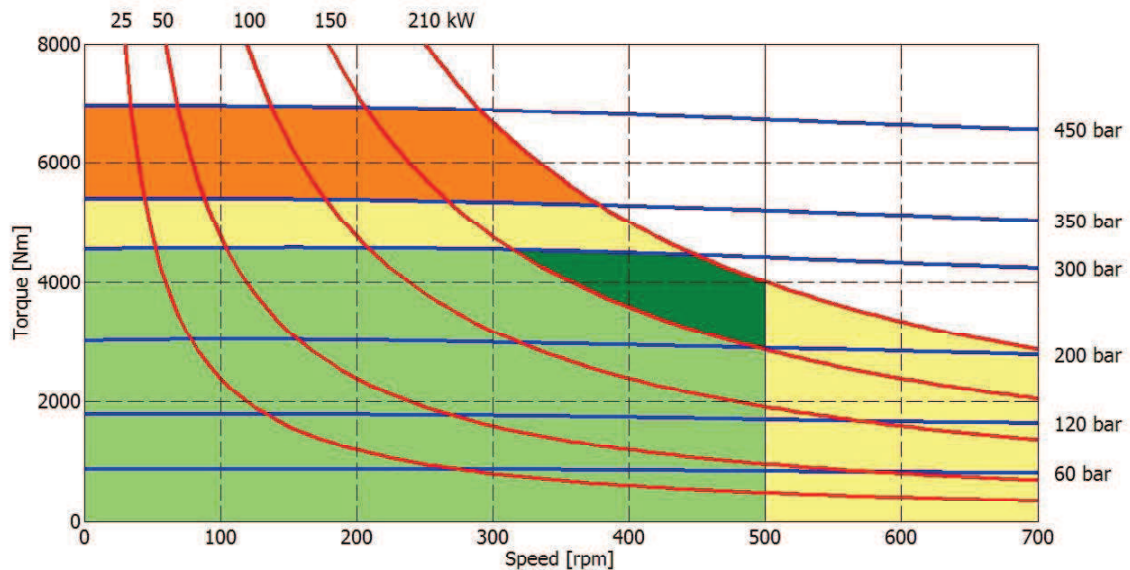
Pag. 75

HCD5 - PERFORMANCE DIAGRAMS

800 cc



1000 cc



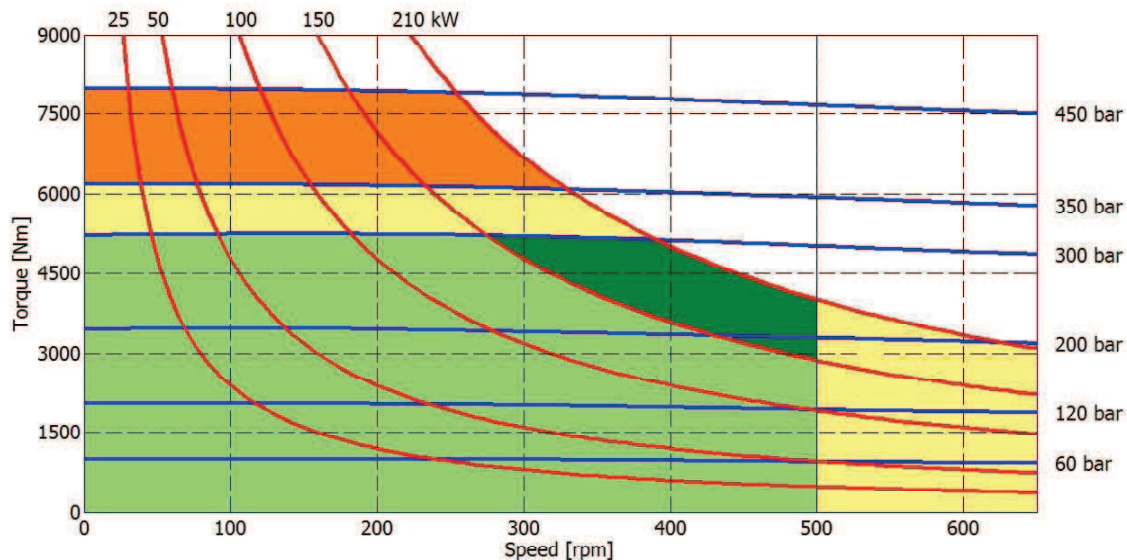
- Continuous operation
- Continuous operation with flushing or intermittent operation (see below for intermittent operation)
- Intermittent operation: permitted for a 15% of duty cycle, for 3 minutes maximum period
- Peak operation: permitted for very short periods (3-5 seconds every 10-15 minutes)

The above diagrams are referring to the hydraulic motor working with a fluid in ideal conditions (viscosity at 40 cSt). In case the working temperature increases and viscosity reach values under the recommended values (see hydraulic fluid recommendations) flushing must be performed or ISO oil grade must be changed. The working temperature must not overcome 70 °C.

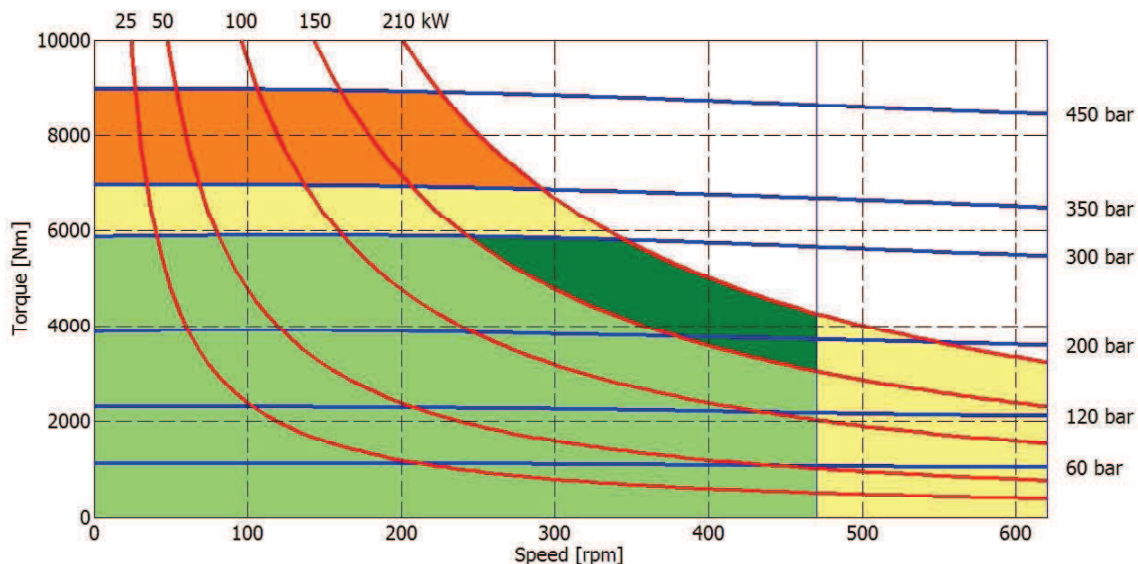
The data specified into the catalogue are for product description purpose only and must not be interpreted as warranted characteristics in legal sense. Italgrou S.r.l. reserves the right to implement modifications without notice. All partial or total reproduction and copy without written authorization of Italgrou S.r.l. is strictly forbidden.

HCD5 - PERFORMANCE DIAGRAMS

1200 cc



1300 cc



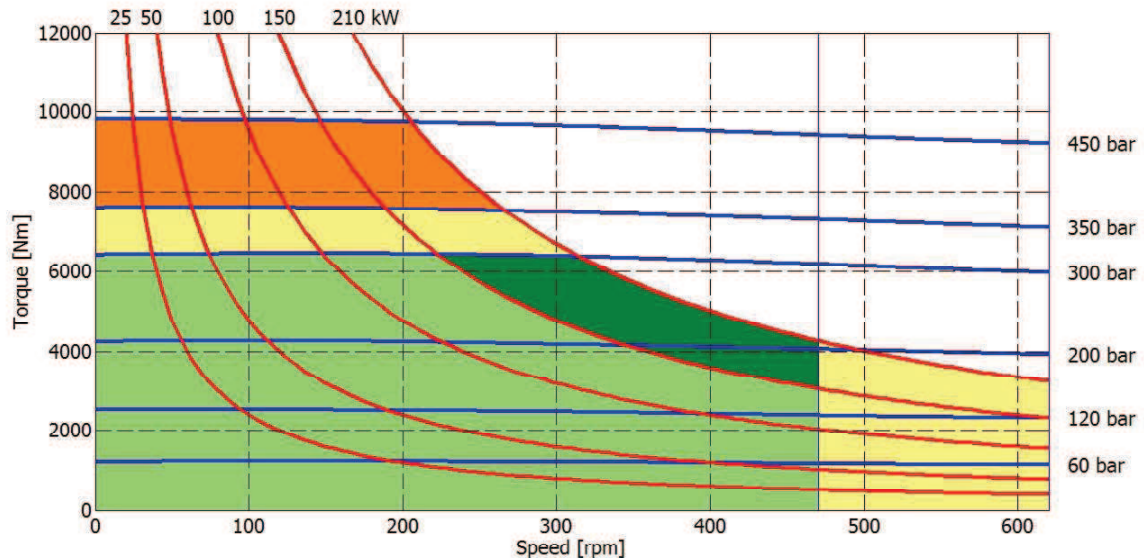
- Continuous operation
- Continuous operation with flushing or intermittent operation (see below for intermittent operation)
- Intermittent operation: permitted for a 15% of duty cycle, for 3 minutes maximum period
- Peak operation: permitted for very short periods (3-5 seconds every 10-15 minutes)

The above diagrams are referring to the hydraulic motor working with a fluid in ideal conditions (viscosity at 40 cSt). In case the working temperature increases and viscosity reach values under the recommended values (see hydraulic fluid recommendations) flushing must be performed or ISO oil grade must be changed. The working temperature must not overcome 70 °C.

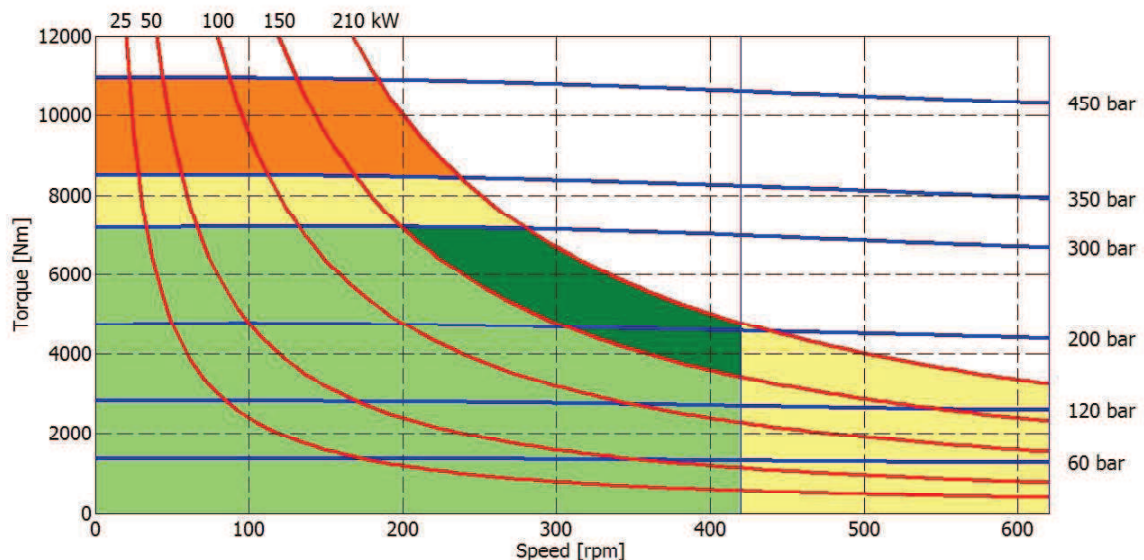
The data specified into the catalogue are for product description purpose only and must not be interpreted as warranted characteristics in legal sense. Italgroup S.r.l. reserves the right to implement modifications without notice. All partial or total reproduction and copy without written authorization of Italgroup S.r.l. is strictly forbidden.

HCD5- PERFORMANCE DIAGRAMS

1500 cc



1600 cc



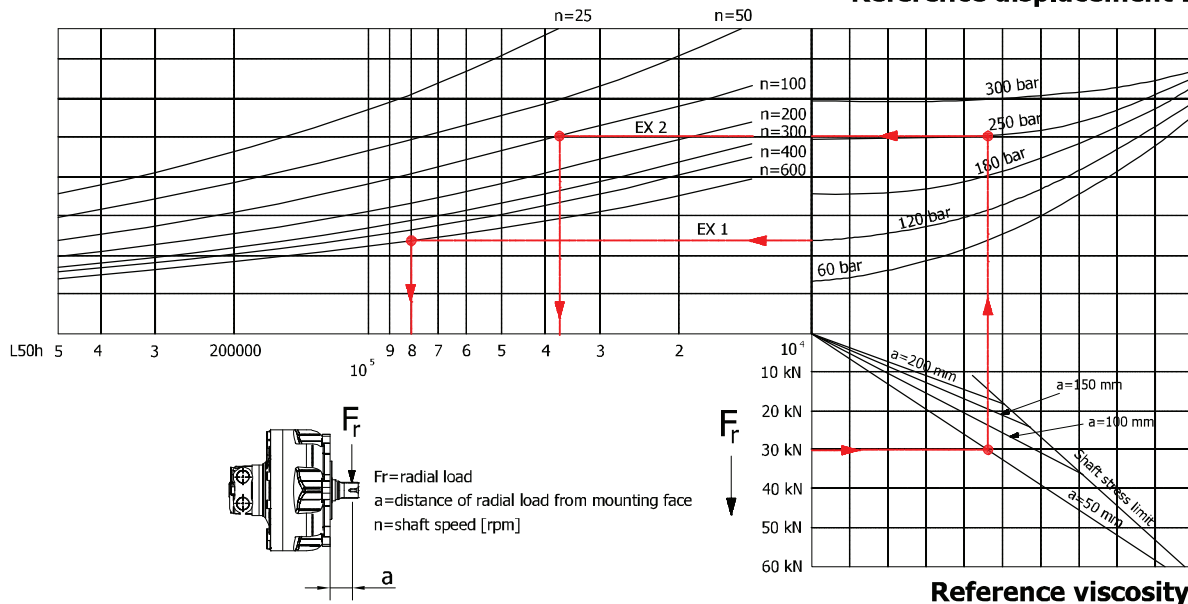
- Continuous operation
- Continuous operation with flushing or intermittent operation (see below for intermittent operation)
- Intermittent operation: permitted for a 15% of duty cycle, for 3 minutes maximum period
- Peak operation: permitted for very short periods (3-5 seconds every 10-15 minutes)

The above diagrams are referring to the hydraulic motor working with a fluid in ideal conditions (viscosity at 40 cSt). In case the working temperature increases and viscosity reach values under the recommended values (see hydraulic fluid recommendations) flushing must be performed or ISO oil grade must be changed. The working temperature must not overcome 70 °C.

The data specified into the catalogue are for product description purpose only and must not be interpreted as warranted characteristics in legal sense. Italgrou S.r.l. reserves the right to implement modifications without notice. All partial or total reproduction and copy without written authorization of Italgrou S.r.l. is strictly forbidden.

BEARING LIFE

Reference displacement 1300 cc



Example:

We suppose (EX1): $p=120$ [bar], $n=600$ [rpm]; we obtain an average lifetime of 80000 [h].

If we suppose (EX2): $F_r=30$ [kN], $a=50$ [mm], $n=100$ [rpm] and $p=250$ [bar] we obtain an average lifetime of 38000 [h].

HCD5 - ORDERING CODE

HCD	5	---	--	--	--	--	--	SB -
-----	---	-----	----	----	----	----	----	------

DISPLACEMENT

(800) (1000) (1200) (1300)
(1500) (1600)

INTERCHANGEABILITY

(/G4)

SHAFT

(A0) (A1)
(A2) (A3)
(A31)

TACHOMETER

(J) (*)
(TA)
(TB)
(TT1)
(TQ1)
(EST)
(EST30)
(EST31)

See pag. 84-87

(*) Tachometer predisposition

SPECIAL FEATURES

(HSM)
See pag. 7
(MP)
(SPSL)
(HPS)
(CCW)
See pag. 23
(Z - -)
Italgroup
internal code

DISTRIBUTOR

(D31B) (D36B)
(D310B) (D40)
(D47) (D416)
(D90)

See pag. 82-83

SPLINE BILLET

(SB17) (SB23)

See pag. 88