
ITALGROUP SRL

IAM SERIES - IAM H5

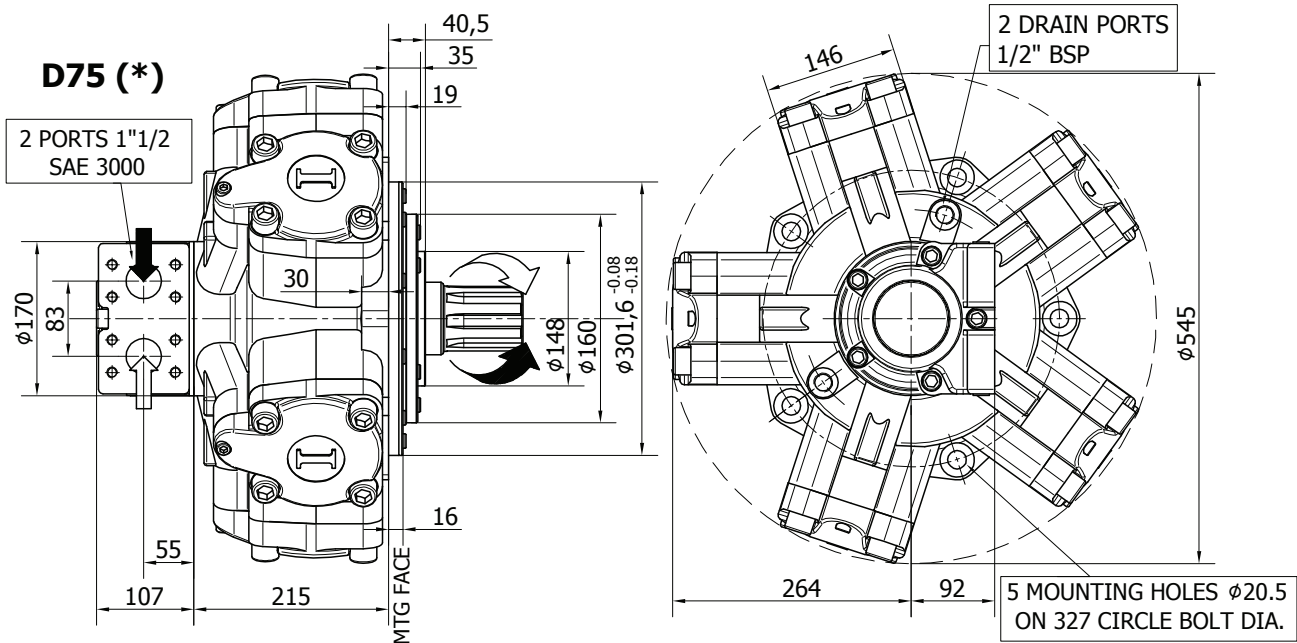
GENERAL CATALOGUE

INDEX - IAM H5

IAM H5 - INSTALLATION DRAWINGS	Pag	122 - 123
IAM 1000-1200-1400-1500-1600/C1100 H5 INSTALLATION DRAWINGS	"	124 - 125
IAM 1600-1800-2000-2200/C H5 - INSTALLATION DRAWINGS	"	126 - 127
IAM 1000/B60 - 1400/B80 - 1600/B100 H5 - INSTALLATION DRAWINGS	"	128 - 129
IAM H5/GM5 - INSTALLATION DRAWINGS	"	130 - 131
IAM H5 - PERFORMANCE DIAGRAMS	"	132 - 136
IAM H5 - ORDERING CODE	"	137

INSTALLATION DRAWING

Available distributor flanges: **FL5** **FL6**
for S03 and S04, refer to page 156 (distributor fitting D75)



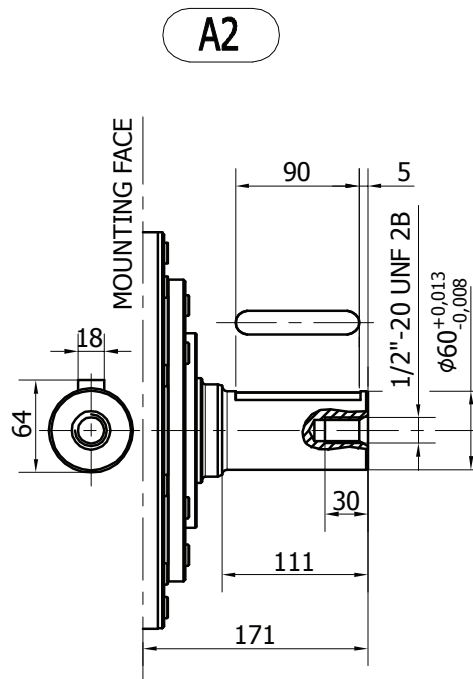
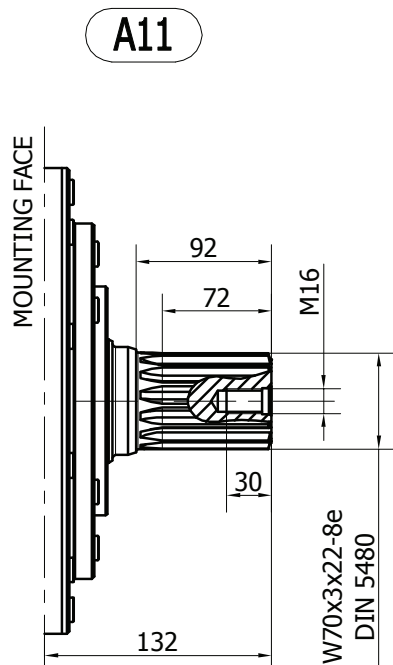
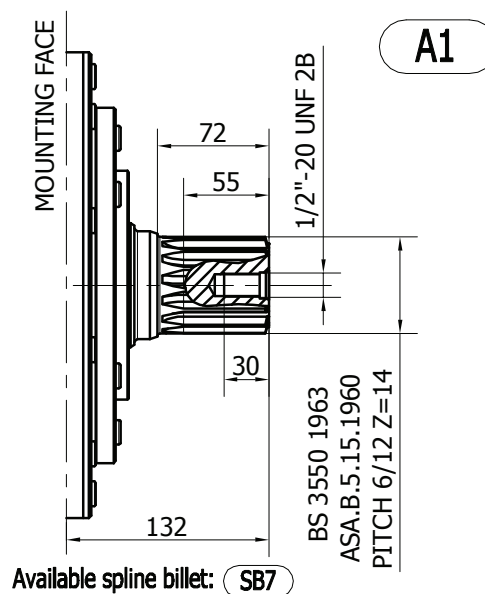
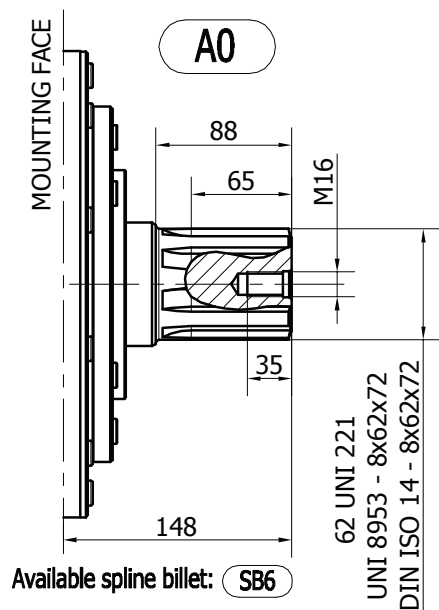
TECHNICAL DATA

		1000	1200	1400	1500	1600	1800	2000	2200 (*****)
DISPLACEMENT	[cc]	1094	1231	1376	1528	1648	1815	2035	2220
SPECIFIC TORQUE	[Nm/bar]	17.4	19.6	21.9	24.3	26.2	28.9	32.4	35.3
MAX. CONT. PRESSURE	[bar]	250	250	250	250	250	250	250	250
HYDROSTATIC TEST PRES- SURE	[bar]	420	420	420	420	420	420	420	420
MAX. CONT. SPEED	[rpm]	350	300	300	300	300	250	230	220
PEAK SPEED (***)	[rpm]	400	350	350	350	340	300	260	240
MAX. CONT. POWER (****)	[kW]	90	90	90	90	90	90	90	90
MAX. POWER	[kW]	120	120	120	120	120	120	120	120
MAX. CASE PRESSURE	[bar]	6	6	6	6	6	6	6	6
DRY WEIGHT	[kg]	173	173	173	173	173	173	173	173
TEMPERATURE RANGE (**)	[°C]	-30÷70	-30÷70	-30÷70	-30÷70	-30÷70	-30÷70	-30÷70	-30÷70

- (*) The standard distributor (D75) is shown. Please refer to distributors section (pag. 176-177) for different distributor interfaces.
- (**) Please refer to the hydraulic fluid recommendations (pag. 10-11).
- (***) Do not exceed maximum power (see pag. 13).
- (****) For motor operation with a continuous duty cycle at maximum continuous power the flushing is usually required. For more information please contact our technical department.
- (*****) Only for spare parts market. Please contact our technical department for more details.

The data specified into the catalogue are for product description purpose only and must not be interpreted as warranted characteristics in legal sense. Italgrou S.r.l. reserves the right to implement modifications without notice. All partial or total reproduction and copy without written authorization of Italgrou S.r.l. is strictly forbidden.

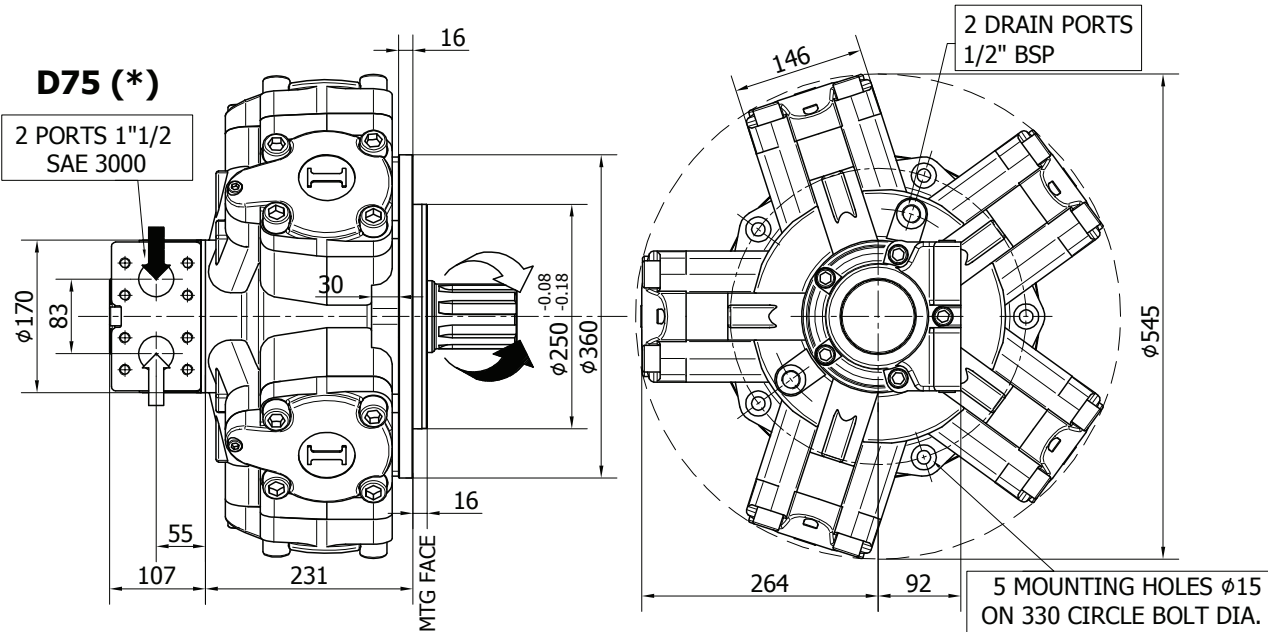
SHAFT CONFIGURATIONS



The data specified into the catalogue are for product description purpose only and must not be interpreted as warranted characteristics in legal sense. Italgroup S.r.l. reserves the right to implement modifications without notice. All partial or total reproduction and copy without written authorization of Italgroup S.r.l. is strictly forbidden.

INSTALLATION DRAWING

Available distributor flange: **FL4**
refer to page 184 (distributor fitting D75)



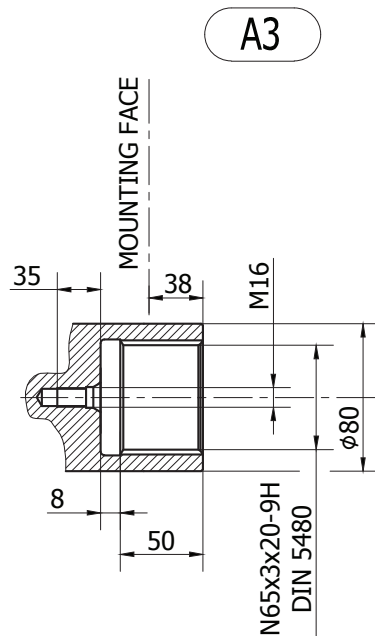
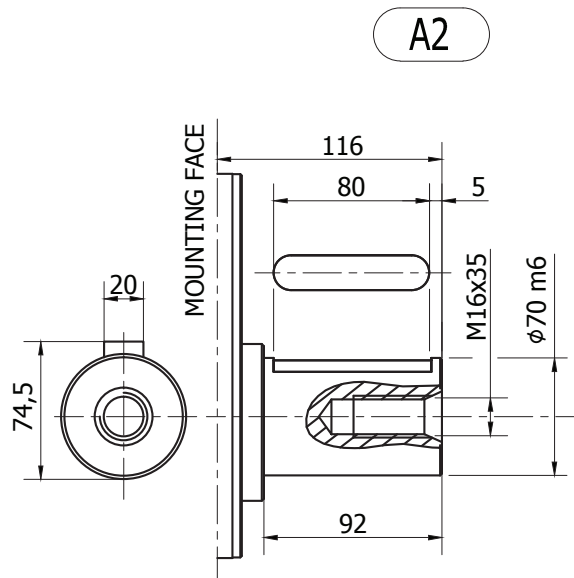
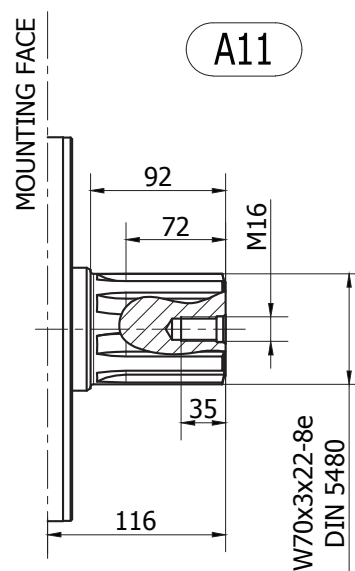
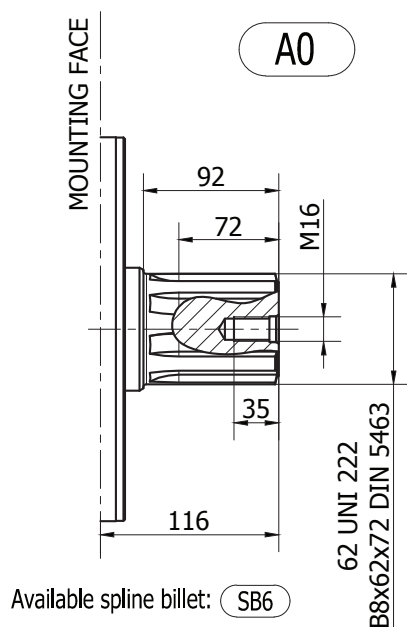
TECHNICAL DATA

		1000	1200	1400	1500	1600
DISPLACEMENT	[cc]	1094	1231	1376	1528	1648
SPECIFIC TORQUE	[Nm/bar]	17.4	19.6	21.9	24.3	26.2
MAX. CONT. PRESSURE	[bar]	250	250	250	250	250
HYDROSTATIC TEST PRES-SURE	[bar]	420	420	420	420	420
MAX. CONT. SPEED	[rpm]	350	300	300	300	300
PEAK SPEED (***)	[rpm]	400	350	350	350	340
MAX. CONT. POWER (****)	[kW]	90	90	90	90	90
MAX. POWER	[kW]	120	120	120	120	120
MAX. CASE PRESSURE	[bar]	6	6	6	6	6
DRY WEIGHT	[kg]	173	173	173	173	173
TEMPERATURE RANGE (**)	[°C]	-30÷70	-30÷70	-30÷70	-30÷70	-30÷70

- (*) The standard distributor (D75) is shown. Please refer to distributors section (pag. 176-177) for different distributor interfaces.
- (**) Please refer to the hydraulic fluid recommendations (pag. 10-11).
- (***) Do not exceed maximum power (see pag. 13).
- (****) For motor operation with a continuous duty cycle at maximum continuous power the flushing is usually required. For more information please contact our technical department.

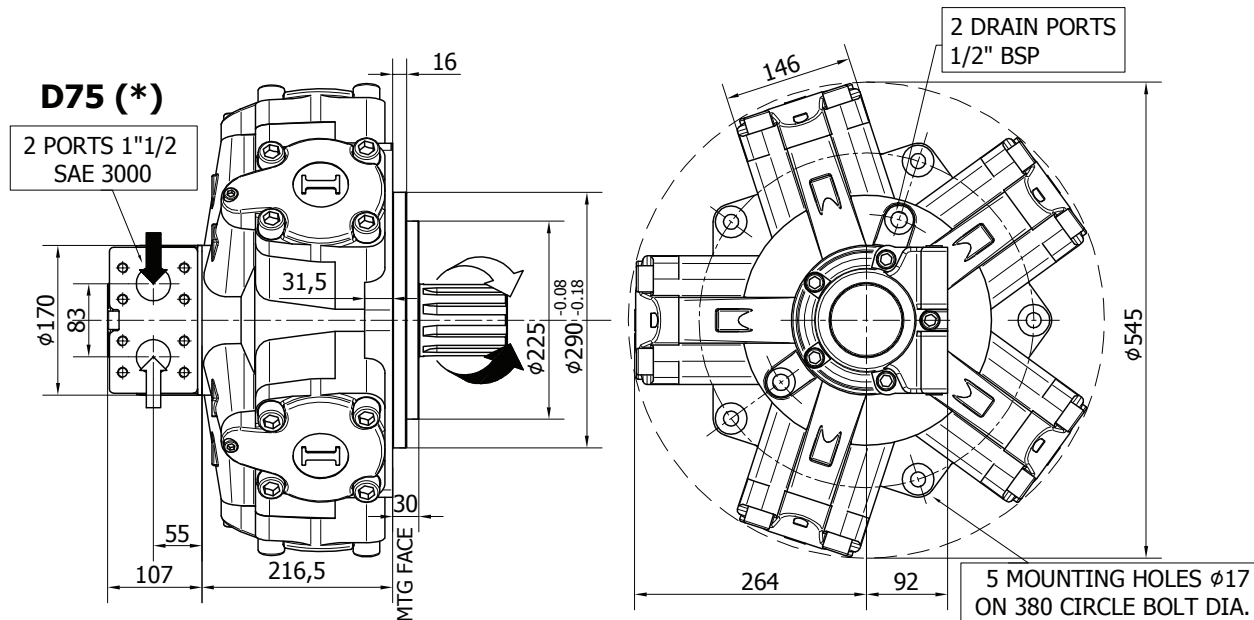
The data specified into the catalogue are for product description purpose only and must not be interpreted as warranted characteristics in legal sense. Italgroup S.r.l. reserves the right to implement modifications without notice. All partial or total reproduction and copy without written authorization of Italgroup S.r.l. is strictly forbidden.

SHAFT CONFIGURATIONS



INSTALLATION DRAWING

Available distributor flange: **FL4**
refer to page 184 (distributor fitting D75)



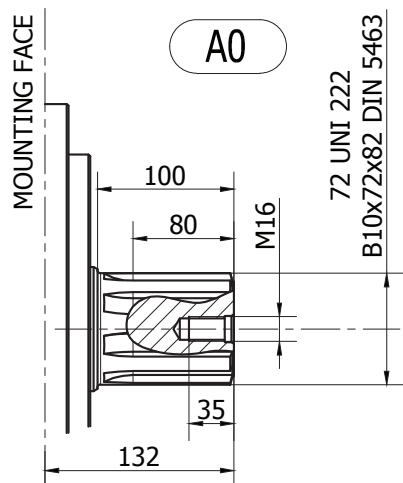
TECHNICAL DATA

		1600	1800	2000	2200 (*****)
DISPLACEMENT	[cc]	1648	1815	2035	2220
SPECIFIC TORQUE	[Nm/bar]	26.2	28.9	32.4	35.3
MAX. CONT. PRESSURE	[bar]	250	250	250	250
HYDROSTATIC TEST PRES- SURE	[bar]	420	420	420	420
MAX. CONT. SPEED	[rpm]	300	250	230	220
PEAK SPEED (***)	[rpm]	340	300	260	240
MAX. CONT. POWER (****)	[kW]	90	90	90	90
MAX. POWER	[kW]	120	120	120	120
MAX. CASE PRESSURE	[bar]	6	6	6	6
DRY WEIGHT	[kg]	173	173	173	173
TEMPERATURE RANGE (**)	[°C]	-30÷70	-30÷70	-30÷70	-30÷70

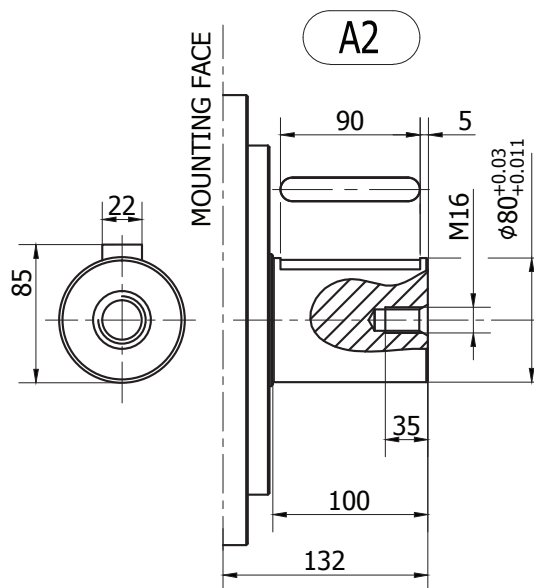
- (*) The standard distributor (D75) is shown. Please refer to distributors section (pag. 176-177) for different distributor interfaces.
- (**) Please refer to the hydraulic fluid recommendations (pag. 10-11).
- (***) Do not exceed maximum power (see pag. 13).
- (****) For motor operation with a continuous duty cycle at maximum continuous power the flushing is usually required. For more information please contact our technical department.
- (*****) Only for spare parts market. Please contact our technical department for more details.

The data specified into the catalogue are for product description purpose only and must not be interpreted as warranted characteristics in legal sense. Italgrou S.r.l. reserves the right to implement modifications without notice. All partial or total reproduction and copy without written authorization of Italgrou S.r.l. is strictly forbidden.

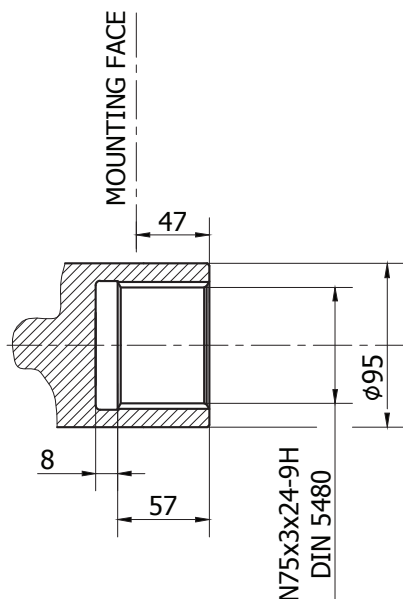
SHAFT CONFIGURATIONS



Available spline billet: **SB8**



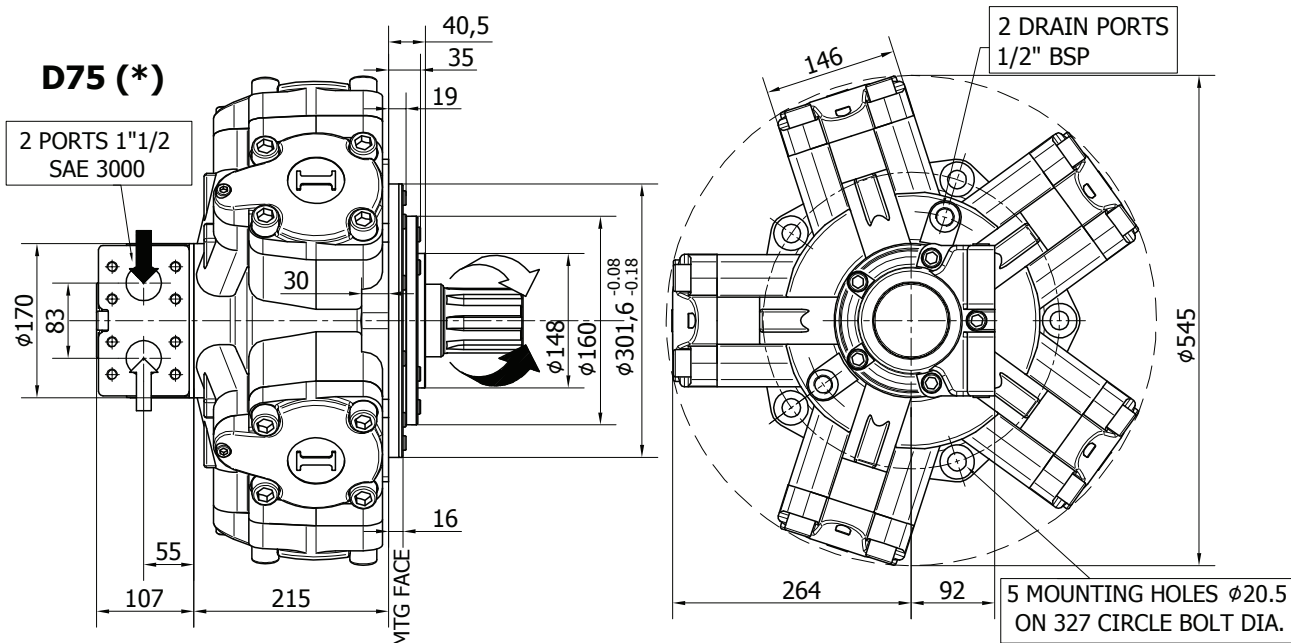
A3



The data specified into the catalogue are for product description purpose only and must not be interpreted as warranted characteristics in legal sense. Italgroup S.r.l. reserves the right to implement modifications without notice. All partial or total reproduction and copy without written authorization of Italgroup S.r.l. is strictly forbidden.

INSTALLATION DRAWING

Available distributor flanges: **FL5** **FL6**
for S03 and S04, refer to page 156 (distributor fitting D75)



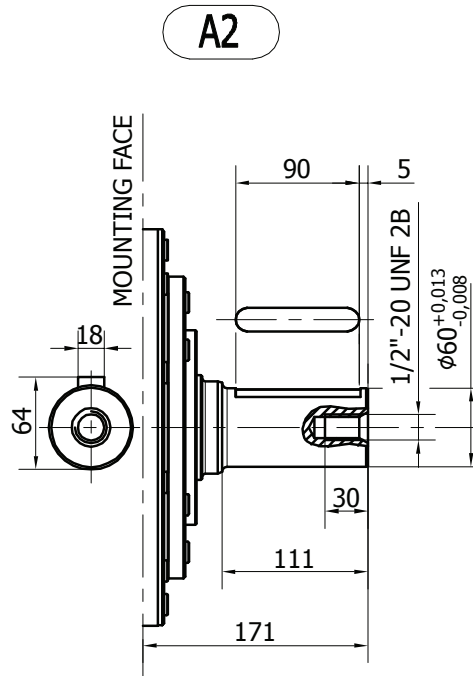
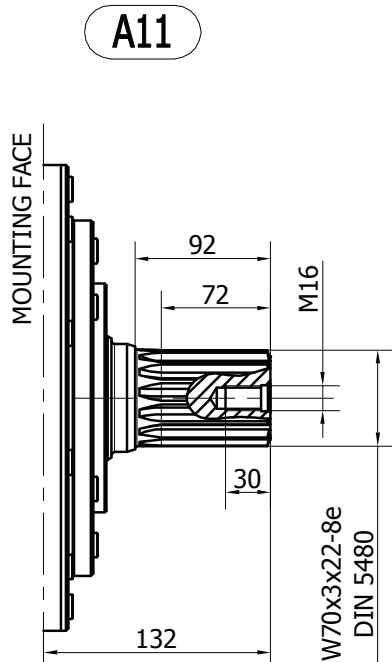
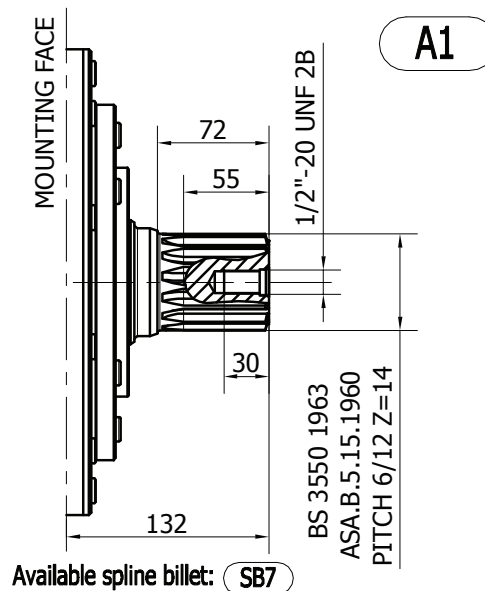
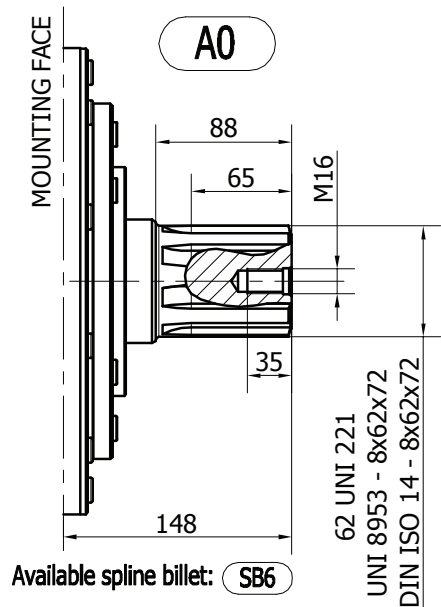
TECHNICAL DATA

		1000	1400	1600
DISPLACEMENT	[cc]	1094	1376	1648
SPECIFIC TORQUE	[Nm/bar]	17.4	21.9	26.2
MAX. CONT. PRESSURE	[bar]	250	250	250
HYDROSTATIC TEST PRESSURE	[bar]	420	420	420
MAX. CONT. SPEED	[rpm]	350	300	300
PEAK SPEED (***)	[rpm]	400	350	340
MAX. CONT. POWER (****)	[kW]	90	90	90
MAX. POWER	[kW]	120	120	120
MAX. CASE PRESSURE	[bar]	6	6	6
DRY WEIGHT	[kg]	173	173	173
TEMPERATURE RANGE (**)	[°C]	-30÷70	-30÷70	-30÷70

- (*) The standard distributor (D75) is shown. Please refer to distributors section (pag. 176-177) for different distributor interfaces.
- (**) Please refer to the hydraulic fluid recommendations (pag. 10-11).
- (***) Do not exceed maximum power (see pag. 13).
- (****) For motor operation with a continuous duty cycle at maximum continuous power the flushing is usually required. For more information please contact our technical department.

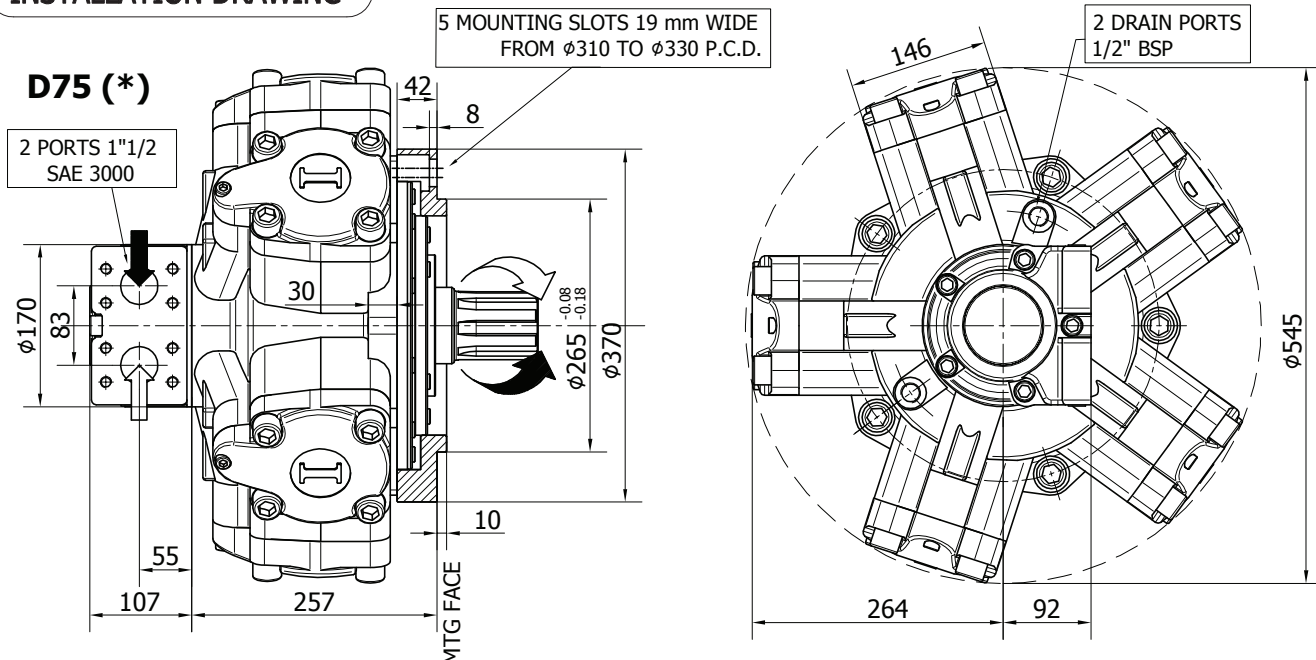
The data specified into the catalogue are for product description purpose only and must not be interpreted as warranted characteristics in legal sense. Italgrou S.r.l. reserves the right to implement modifications without notice. All partial or total reproduction and copy without written authorization of Italgrou S.r.l. is strictly forbidden.

SHAFT CONFIGURATIONS



The data specified into the catalogue are for product description purpose only and must not be interpreted as warranted characteristics in legal sense. Italgroup S.r.l. reserves the right to implement modifications without notice. All partial or total reproduction and copy without written authorization of Italgroup S.r.l. is strictly forbidden.

INSTALLATION DRAWING



TECHNICAL DATA

		1000	1200	1400	1500	1600	1800	2000	2200 (*****)
DISPLACEMENT	[cc]	1094	1231	1376	1528	1648	1815	2035	2220
SPECIFIC TORQUE	[Nm/bar]	17.4	19.6	21.9	24.3	26.2	28.9	32.4	35.3
MAX. CONT. PRESSURE	[bar]	250	250	250	250	250	250	250	250
HYDROSTATIC TEST PRES- SURE	[bar]	420	420	420	420	420	420	420	420
MAX. CONT. SPEED	[rpm]	350	300	300	300	300	250	230	220
PEAK SPEED (***)	[rpm]	400	350	350	350	340	300	260	240
MAX. CONT. POWER (****)	[kW]	90	90	90	90	90	90	90	90
MAX. POWER	[kW]	120	120	120	120	120	120	120	120
MAX. CASE PRESSURE	[bar]	6	6	6	6	6	6	6	6
DRY WEIGHT	[kg]	173	173	173	173	173	173	173	173
TEMPERATURE RANGE (**)	[°C]	-30÷70	-30÷70	-30÷70	-30÷70	-30÷70	-30÷70	-30÷70	-30÷70

- (*) The standard distributor (D75) is shown. Please refer to distributors section (pag. 176-177) for different distributor interfaces.

- (**) Please refer to the hydraulic fluid recommendations (pag. 10-11).

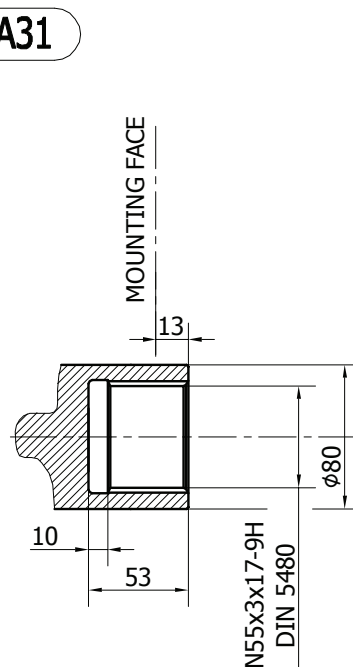
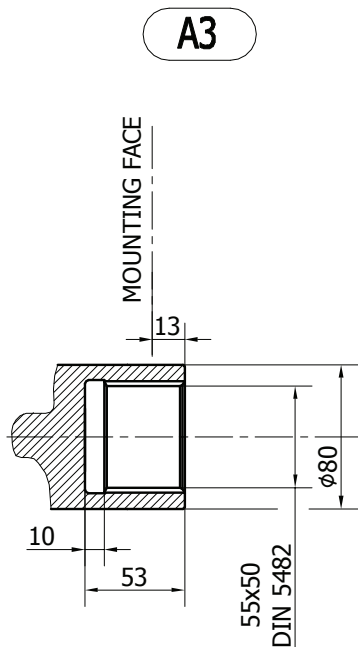
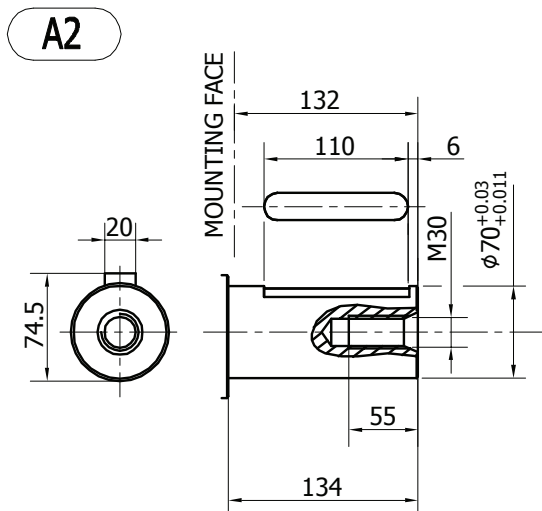
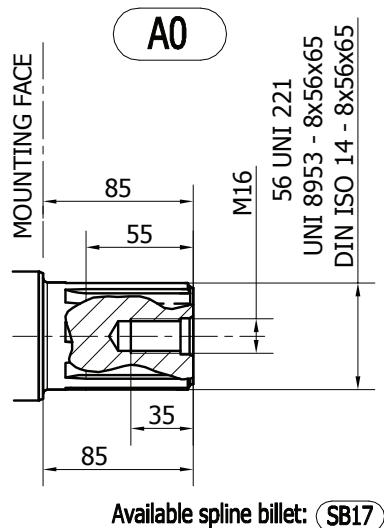
- (***) Do not exceed maximum power (see pag. 13).

- (****) For motor operation with a continuous duty cycle at maximum continuous power the flushing is usually required. For more information please contact our technical department.

- (*****) Only for spare parts market. Please contact our technical department for more details.

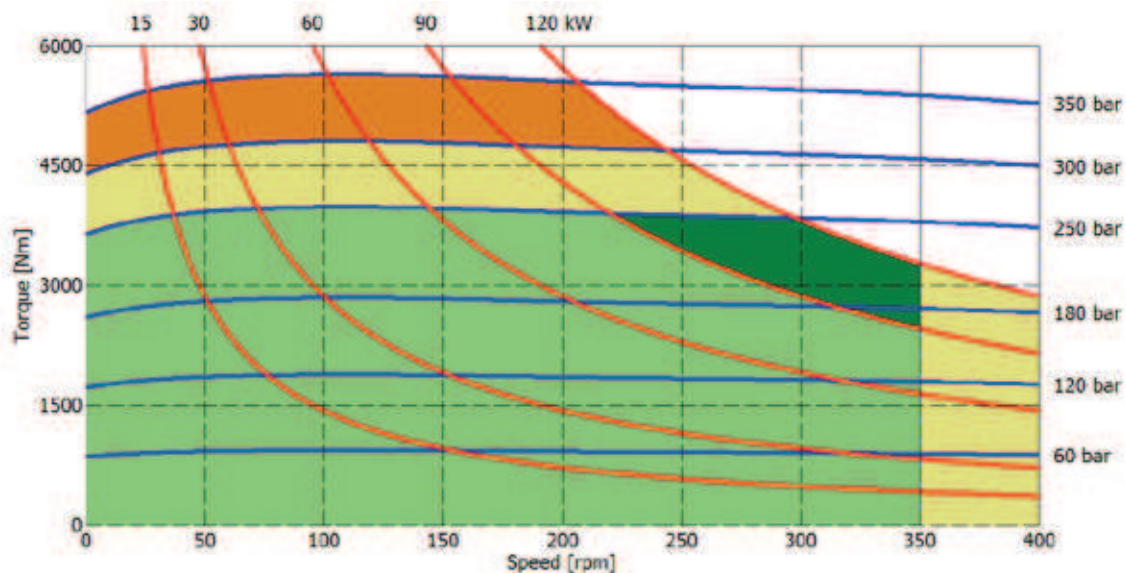
The data specified into the catalogue are for product description purpose only and must not be interpreted as warranted characteristics in legal sense. Italgrou S.r.l. reserves the right to implement modifications without notice. All partial or total reproduction and copy without written authorization of Italgrou S.r.l. is strictly forbidden.

SHAFT CONFIGURATIONS

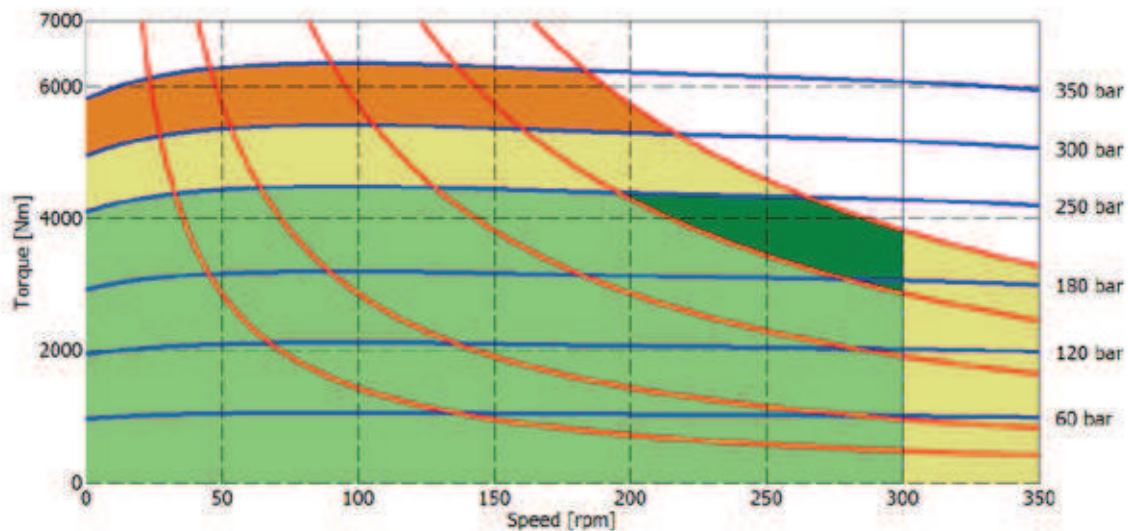


IAM H5 - PERFORMANCE DIAGRAMS

1000 cc



1200 cc



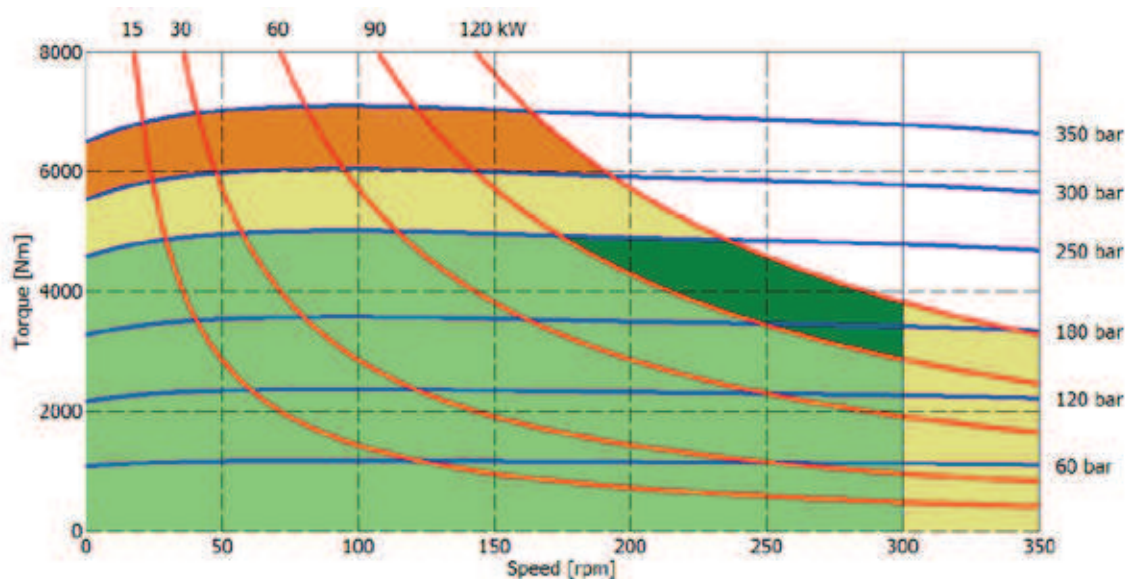
- Continuous operation
- Continuous operation with flushing or intermittent operation (see below for intermittent operation)
- Intermittent operation: permitted for a 15% of duty cycle, for 3 minutes maximum period
- Peak operation: permitted for very short periods (3-5 seconds every 10-15 minutes)

The above diagrams are referring to the hydraulic motor working with a fluid in ideal conditions (viscosity at 40 cSt). In case the working temperature increases and viscosity reach values under the recommended values (see hydraulic fluid recommendations) flushing must be performed or ISO oil grade must be changed. The working temperature must not overcome 70 °C.

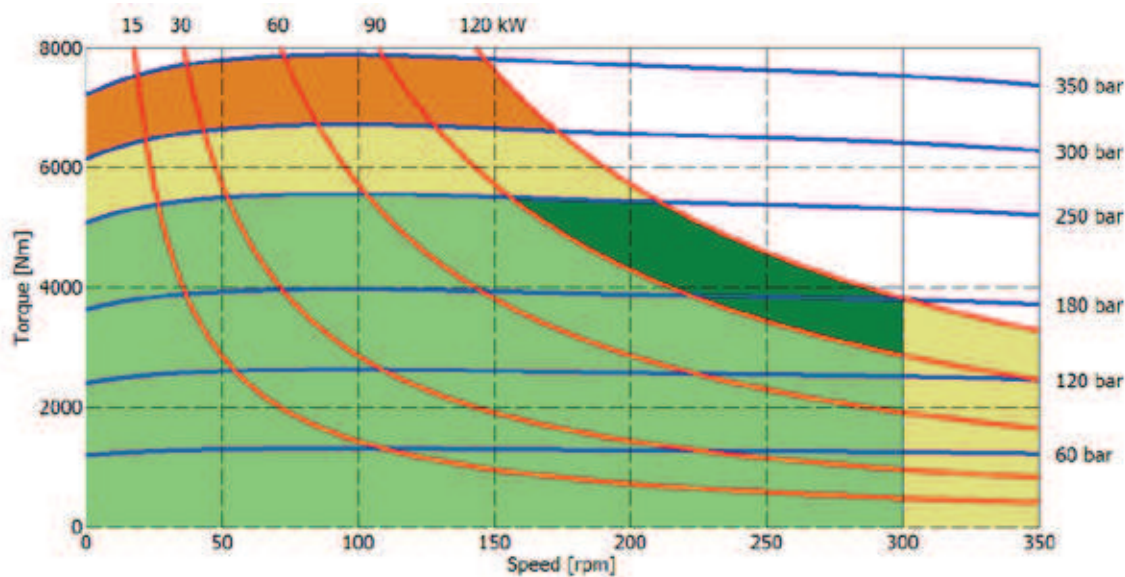
The data specified into the catalogue are for product description purpose only and must not be interpreted as warranted characteristics in legal sense. Italgrou S.r.l. reserves the right to implement modifications without notice. All partial or total reproduction and copy without written authorization of Italgrou S.r.l. is strictly forbidden.

IAM H5 - PERFORMANCE DIAGRAMS

1400 cc



1500 cc



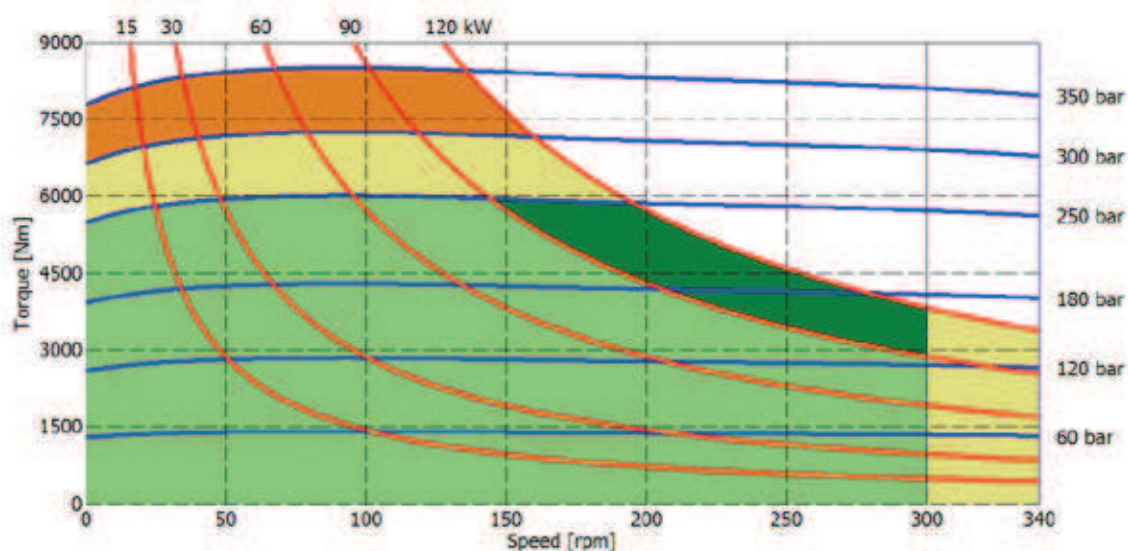
- Continuous operation
- Continuous operation with flushing or intermittent operation (see below for intermittent operation)
- Intermittent operation: permitted for a 15% of duty cycle, for 3 minutes maximum period
- Peak operation: permitted for very short periods (3-5 seconds every 10-15 minutes)

The above diagrams are referring to the hydraulic motor working with a fluid in ideal conditions (viscosity at 40 cSt). In case the working temperature increases and viscosity reach values under the recommended values (see hydraulic fluid recommendations) flushing must be performed or ISO oil grade must be changed. The working temperature must not overcome 70 °C.

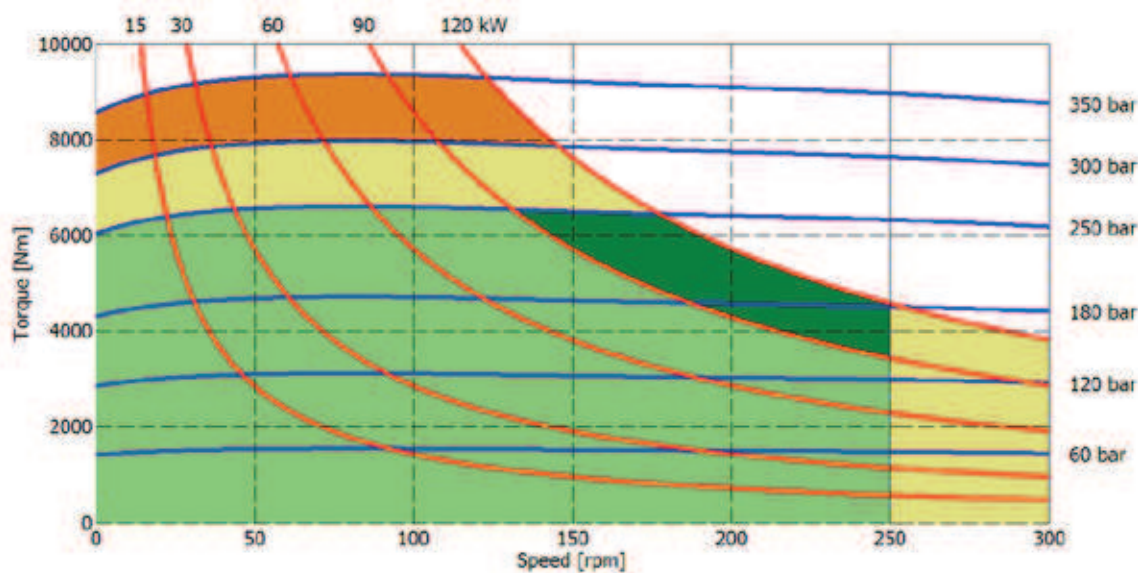
The data specified into the catalogue are for product description purpose only and must not be interpreted as warranted characteristics in legal sense. Italgroup S.r.l. reserves the right to implement modifications without notice. All partial or total reproduction and copy without written authorization of Italgroup S.r.l. is strictly forbidden.

IAM H5 - PERFORMANCE DIAGRAMS

1600 cc



1800 cc



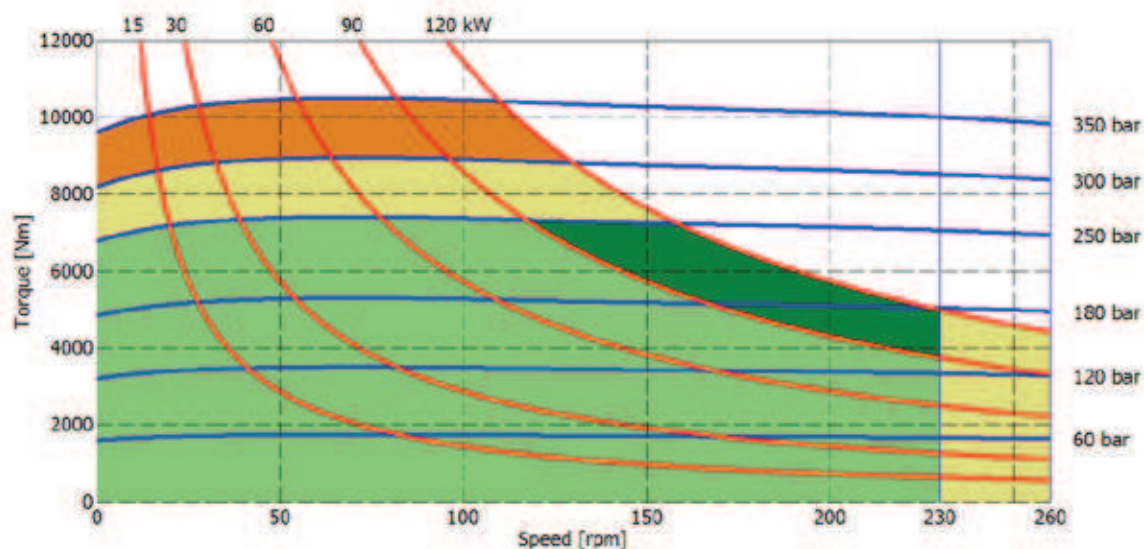
- Continuous operation
- Continuous operation with flushing or intermittent operation (see below for intermittent operation)
- Intermittent operation: permitted for a 15% of duty cycle, for 3 minutes maximum period
- Peak operation: permitted for very short periods (3-5 seconds every 10-15 minutes)

The above diagrams are referring to the hydraulic motor working with a fluid in ideal conditions (viscosity at 40 cSt). In case the working temperature increases and viscosity reach values under the recommended values (see hydraulic fluid recommendations) flushing must be performed or ISO oil grade must be changed. The working temperature must not overcome 70 °C.

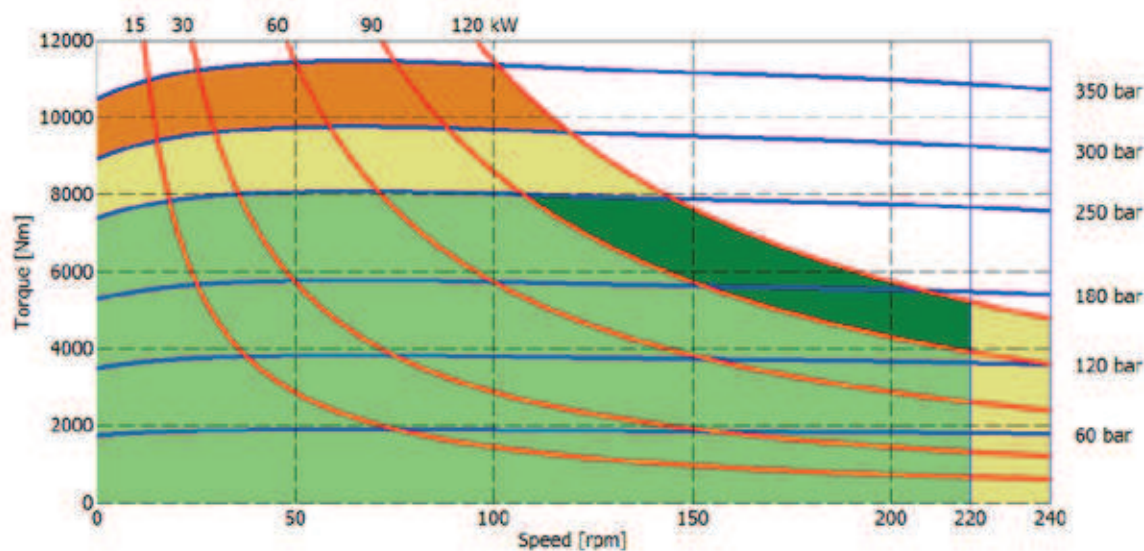
The data specified into the catalogue are for product description purpose only and must not be interpreted as warranted characteristics in legal sense. ItalgrouP S.r.l. reserves the right to implement modifications without notice. All partial or total reproduction and copy without written authorization of ItalgrouP S.r.l. is strictly forbidden.

IAM H5 - PERFORMANCE DIAGRAMS

2000 cc



2200 cc



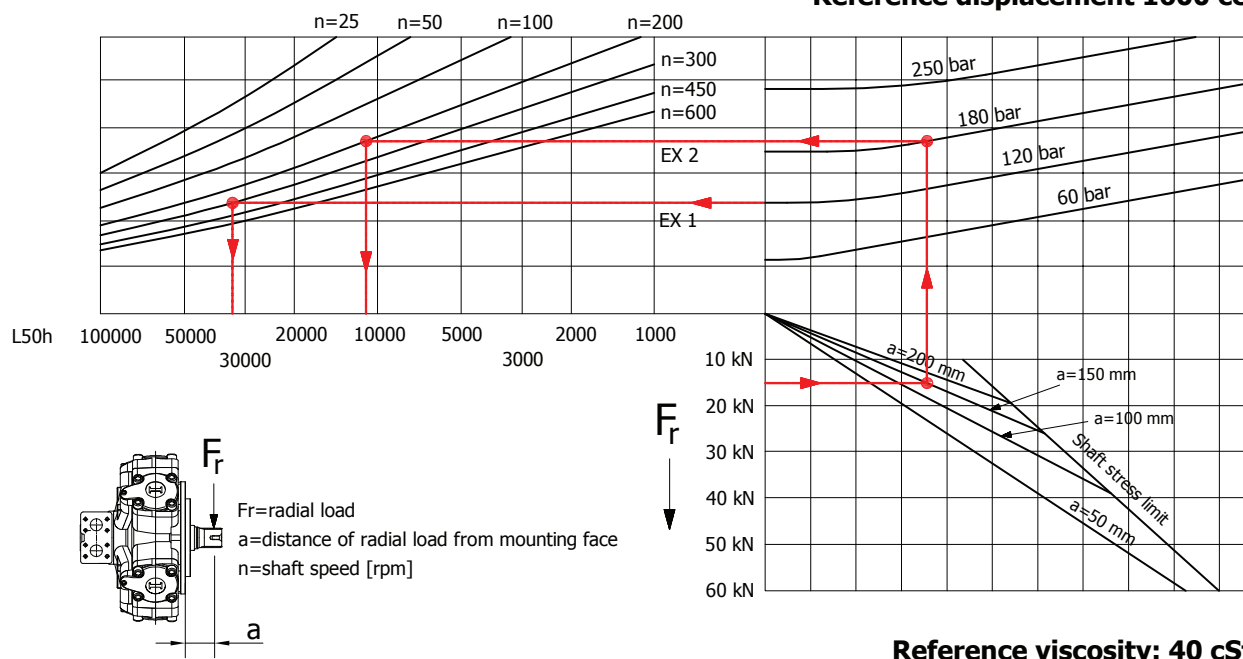
- Continuous operation
- Continuous operation with flushing or intermittent operation (see below for intermittent operation)
- Intermittent operation: permitted for a 15% of duty cycle, for 3 minutes maximum period
- Peak operation: permitted for very short periods (3-5 seconds every 10-15 minutes)

The above diagrams are referring to the hydraulic motor working with a fluid in ideal conditions (viscosity at 40 cSt). In case the working temperature increases and viscosity reach values under the recommended values (see hydraulic fluid recommendations) flushing must be performed or ISO oil grade must be changed. The working temperature must not overcome 70 °C.

The data specified into the catalogue are for product description purpose only and must not be interpreted as warranted characteristics in legal sense. ItalgrouP S.r.l. reserves the right to implement modifications without notice. All partial or total reproduction and copy without written authorization of ItalgrouP S.r.l. is strictly forbidden.

BEARING LIFE

Reference displacement 1600 cc



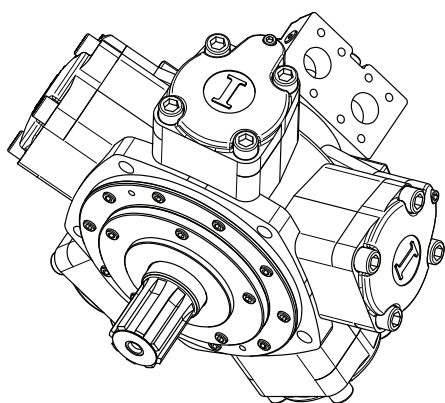
Example:

We suppose (EX1): $p=120$ [bar], $n=300$ [rpm]; we obtain an average lifetime of 33000 [h].

If we suppose (EX2): $F_r=15$ [kN], $a=150$ [mm], $n=200$ [rpm] and $p=180$ [bar] we obtain an average lifetime of 11000 [h].

The above data are referring to the IAM H5 series motors, displacement 1600 cc.

Italgroup®
HYDRAULIC MOTORS
ITALY



IAM 1000 H5 A1 D75 SB7
IAM 1400/C H5 A2 D75
IAM 2000 H5 A0 D90 CCW SB6

D31B	D31BJ
D36B	D36BJ
D310B	D310BJ
D40	D40J
D47	D47J
D416	D416J
D75	D75J
D90	D90J

Pag. 137