

---

# ***ITALGROUP SRL***

---

## ***IAM SERIES - IAM H7***

---

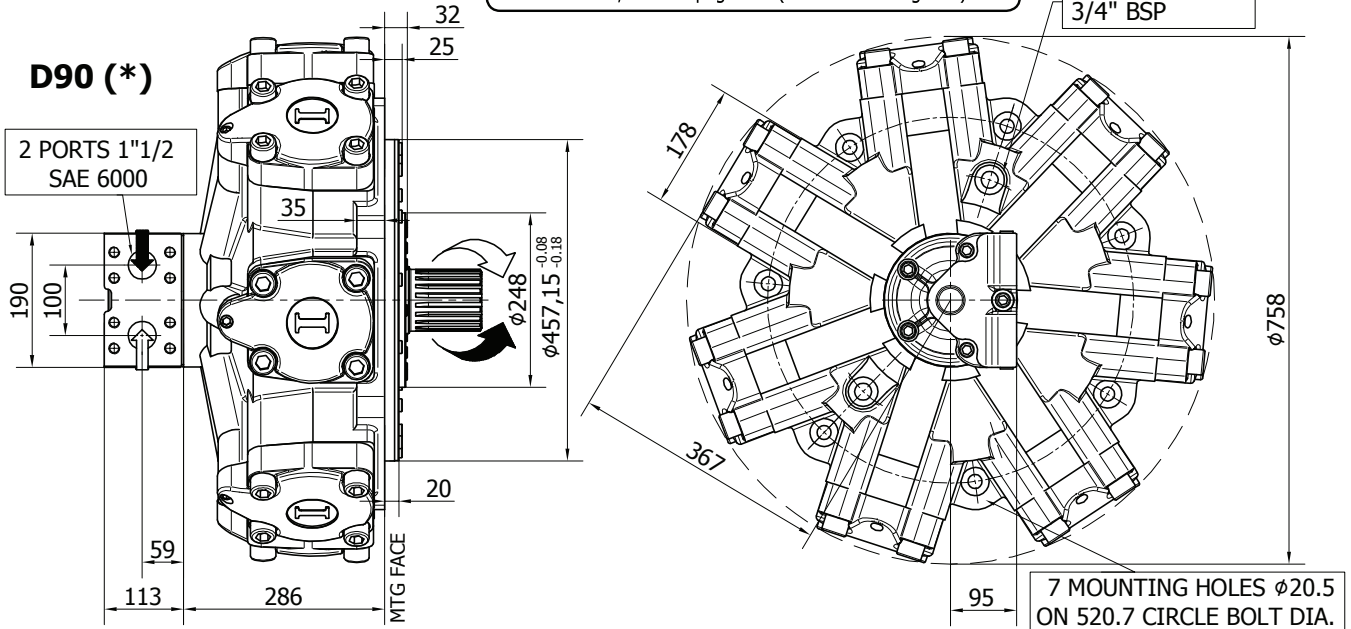
### ***GENERAL CATALOGUE***

---

#### ***INDEX - IAM H7***

<u>IAM H7 - INSTALLATION DRAWINGS</u>	Pag	162 - 164
<u>IAM H7/C - INSTALLATION DRAWINGS</u>	"	166 - 167
<u>IAM H7/RM - INSTALLATION DRAWINGS</u>	"	168 - 169
<u>IAM H7 - PERFORMANCE DIAGRAMS</u>	"	170 - 174
<u>IAM H7 - ORDERING CODE</u>	"	175

**INSTALLATION DRAWING**



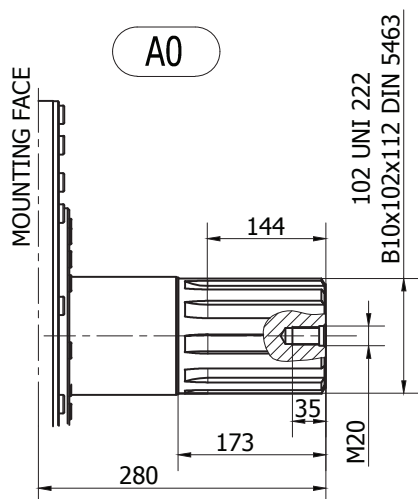
**TECHNICAL DATA**

		3400	3600	3900	4300	4600	5000	5400
DISPLACEMENT	[cc]	3413	3650	3907	4343	4616	5088	5384
SPECIFIC TORQUE	[Nm/bar]	54.3	58.1	62.2	69.1	73.5	81.0	85.7
MAX. CONT. PRESSURE	[bar]	250	250	250	250	250	250	250
HYDROSTATIC TEST PRES-SURE	[bar]	420	420	420	420	420	420	420
MAX. CONT. SPEED	[rpm]	180	170	160	150	140	140	130
PEAK SPEED (***)	[rpm]	220	200	200	190	190	180	170
MAX. CONT. POWER (****)	[kW]	130	130	130	130	130	130	130
MAX. POWER	[kW]	180	180	180	180	180	180	180
MAX. CASE PRESSURE	[bar]	6	6	6	6	6	6	6
DRY WEIGHT	[kg]	405	405	405	405	405	405	405
TEMPERATURE RANGE (**)	[°C]	-30÷70	-30÷70	-30÷70	-30÷70	-30÷70	-30÷70	-30÷70

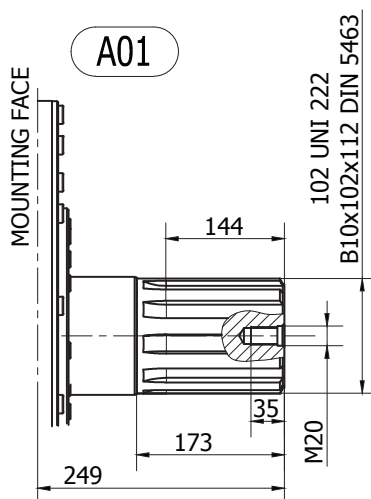
- (\*) The standard distributor (D90) is shown.
- (\*\*) Please refer to the hydraulic fluid recommendations (pag. 10-11).
- (\*\*\*) Do not exceed maximum power (see pag. 13).
- (\*\*\*\*) For motor operation with a continuous duty cycle at maximum continuous power the flushing is usually required. For more information please contact our technical department.

The data specified into the catalogue are for product description purpose only and must not be interpreted as warranted characteristics in legal sense. Italgrou S.r.l. reserves the right to implement modifications without notice. All partial or total reproduction and copy without written authorization of Italgrou S.r.l. is strictly forbidden.

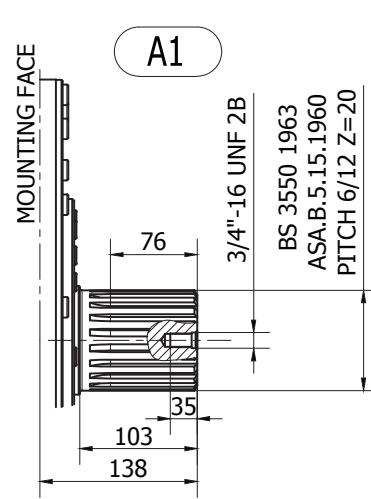
## SHAFT CONFIGURATIONS



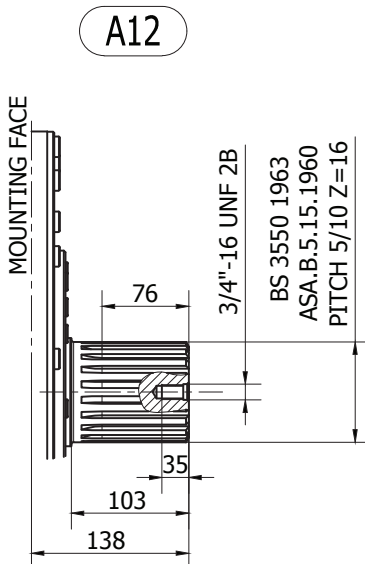
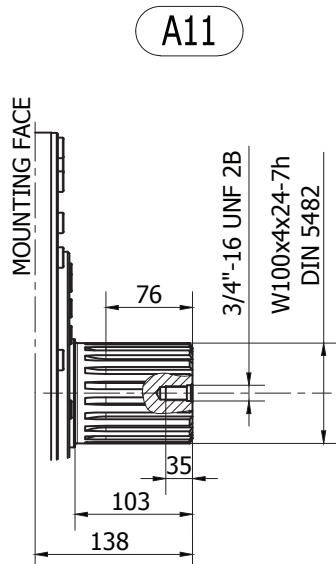
Available spline billet: (SB11)



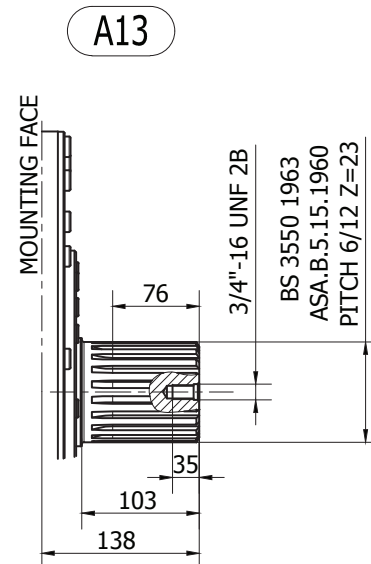
Available spline billet: (SB11)



Available spline billet: (SB10)



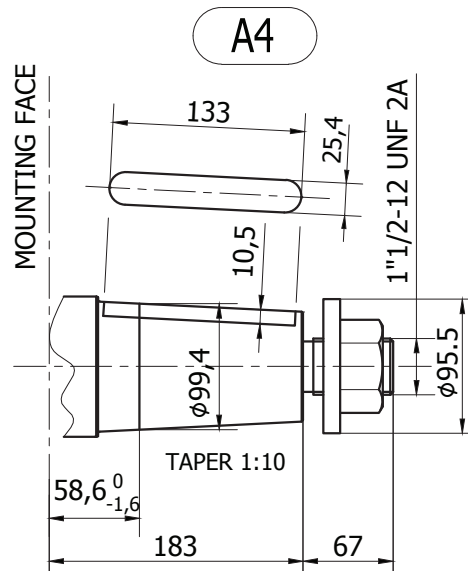
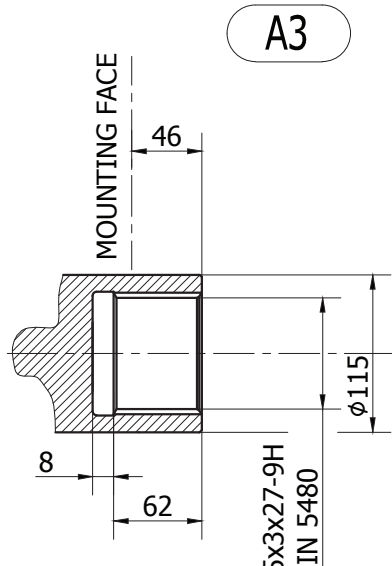
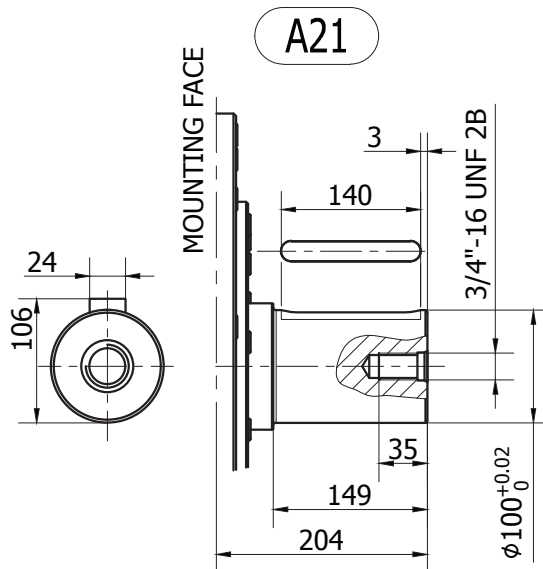
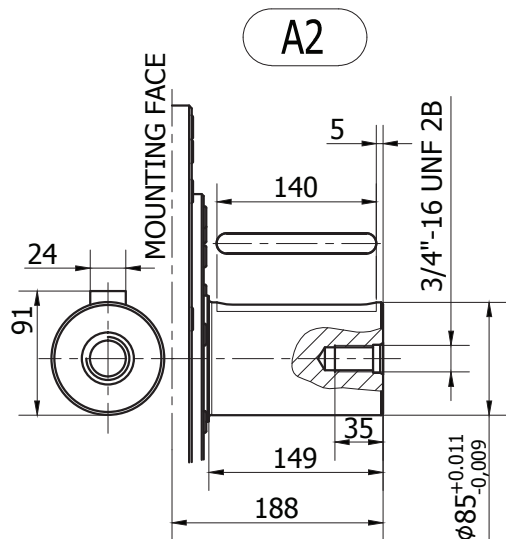
Available spline billet: (SB27)



Available spline billet: (SB24)

The data specified into the catalogue are for product description purpose only and must not be interpreted as warranted characteristics in legal sense. Italgroup S.r.l. reserves the right to implement modifications without notice. All partial or total reproduction and copy without written authorization of Italgroup S.r.l. is strictly forbidden.

## SHAFT CONFIGURATIONS



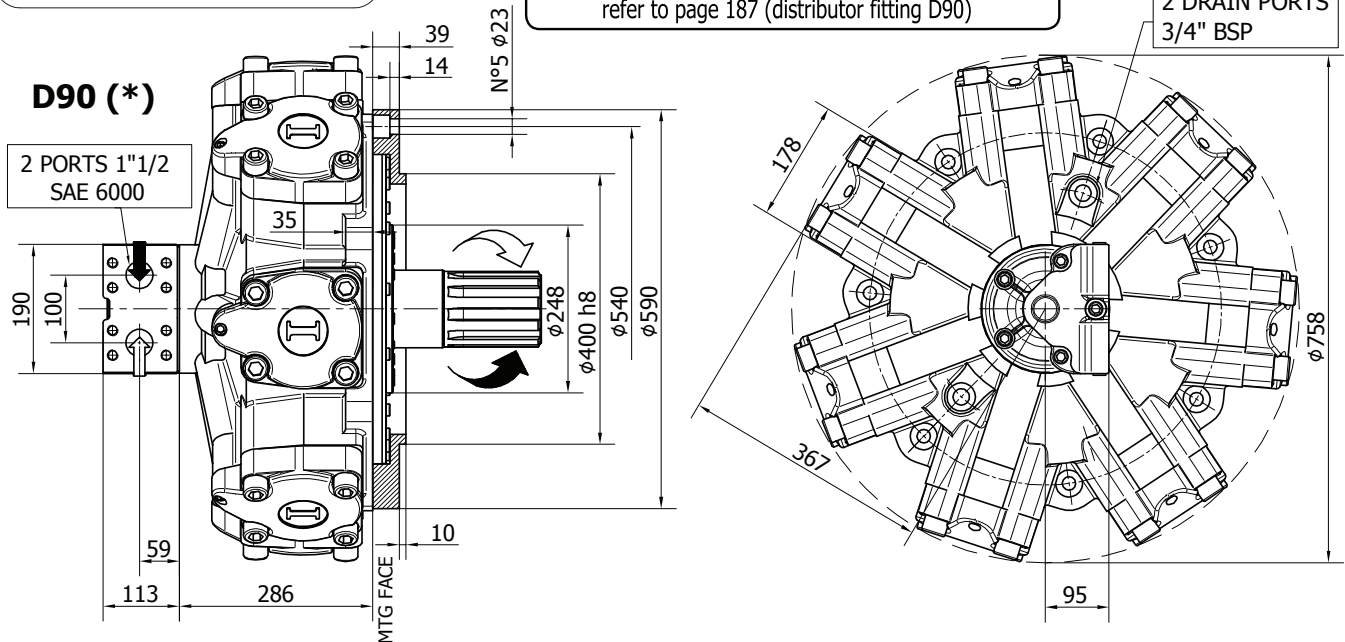
The data specified into the catalogue are for product description purpose only and must not be interpreted as warranted characteristics in legal sense. Italgroup S.r.l. reserves the right to implement modifications without notice. All partial or total reproduction and copy without written authorization of Italgroup S.r.l. is strictly forbidden.

---

The data specified into the catalogue are for product description purpose only and must not be interpreted as warranted characteristics in legal sense. Italgroupp S.r.l. reserves the right to implement modifications without notice. All partial or total reproduction and copy without written authorization of Italgroupp S.r.l. is strictly forbidden.

---

**INSTALLATION DRAWING**



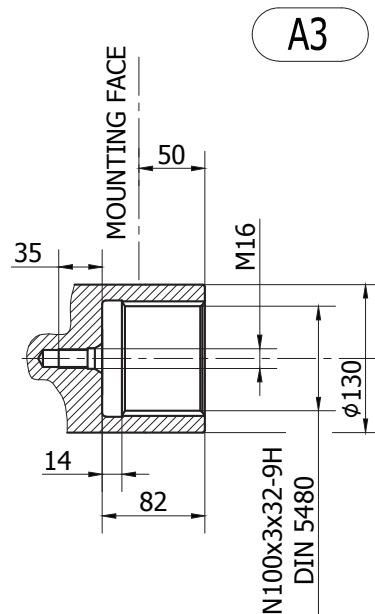
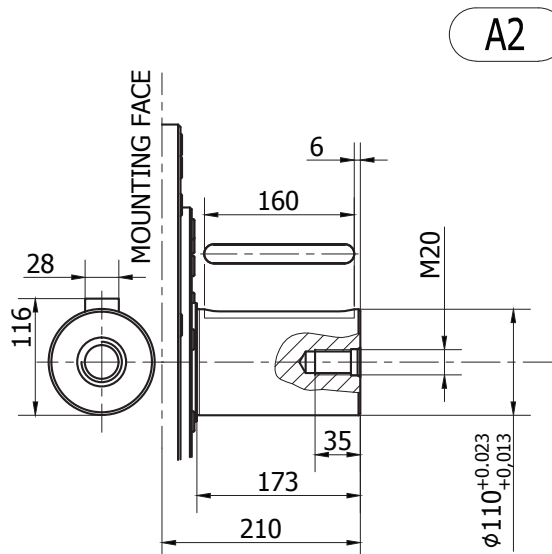
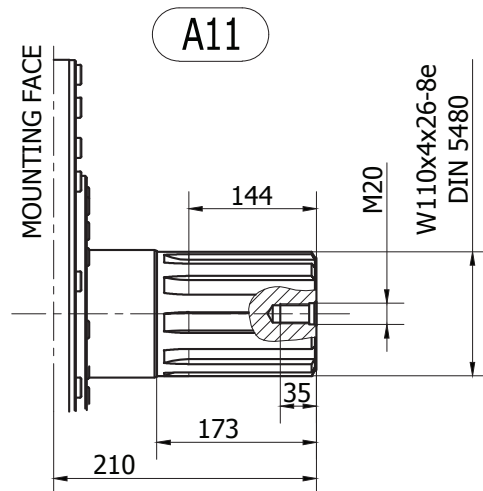
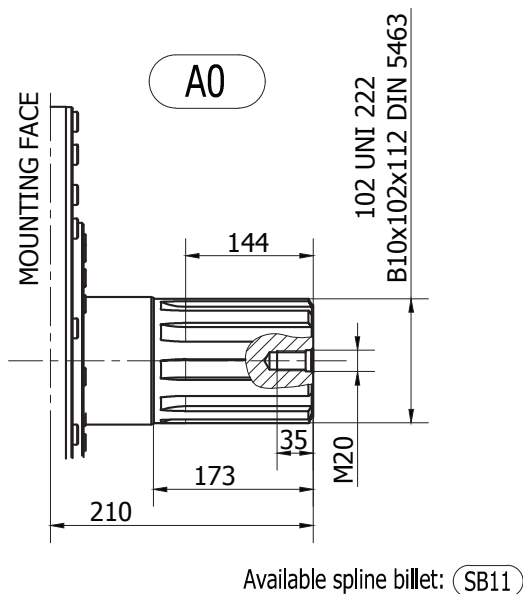
**TECHNICAL DATA**

		3400	3600	3900	4300	4600	5000	5400
DISPLACEMENT	[cc]	3413	3650	3907	4343	4616	5088	5384
SPECIFIC TORQUE	[Nm/bar]	54.3	58.1	62.2	69.1	73.5	81.0	85.7
MAX. CONT. PRESSURE	[bar]	250	250	250	250	250	250	250
HYDROSTATIC TEST PRESSURE	[bar]	420	420	420	420	420	420	420
MAX. CONT. SPEED	[rpm]	180	170	160	150	140	140	130
PEAK SPEED (***)	[rpm]	220	200	200	190	190	180	170
MAX. CONT. POWER (****)	[kW]	130	130	130	130	130	130	130
MAX. POWER	[kW]	180	180	180	180	180	180	180
MAX. CASE PRESSURE	[bar]	6	6	6	6	6	6	6
DRY WEIGHT	[kg]	405	405	405	405	405	405	405
TEMPERATURE RANGE (**)	[°C]	-30÷70	-30÷70	-30÷70	-30÷70	-30÷70	-30÷70	-30÷70

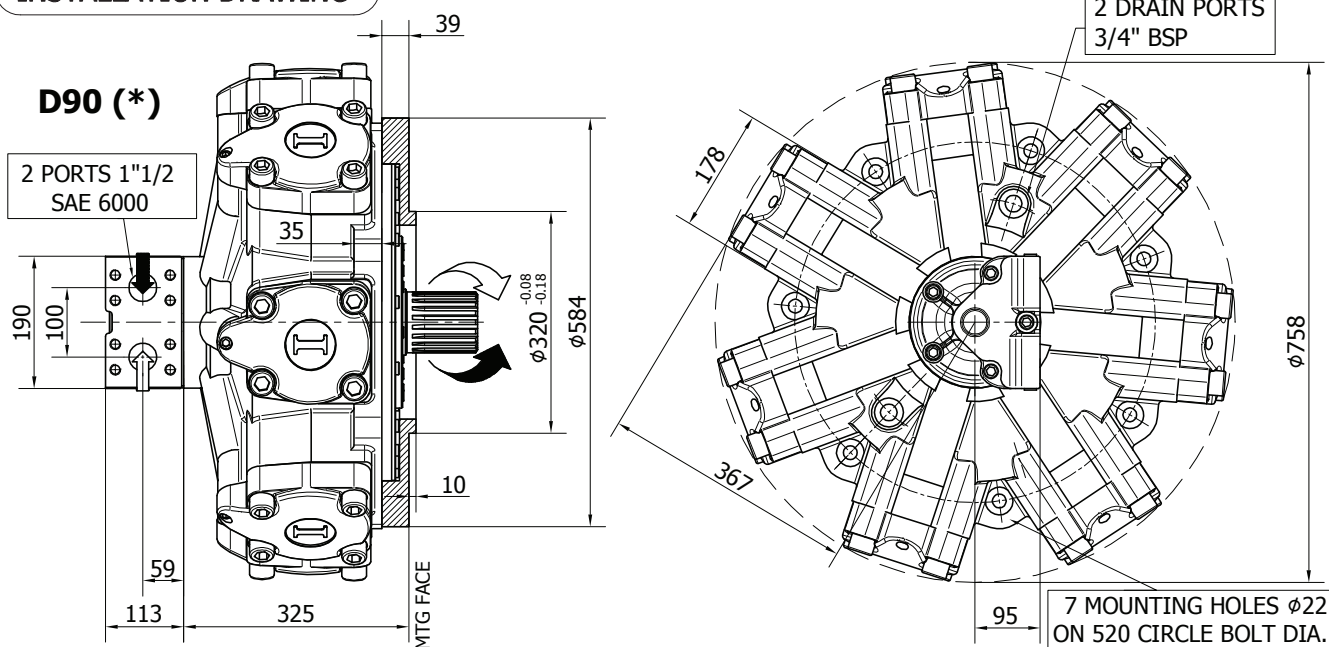
- (\*) The standard distributor (D90) is shown.
- (\*\*) Please refer to the hydraulic fluid recommendations (pag. 10-11).
- (\*\*\*) Do not exceed maximum power (see pag. 13).
- (\*\*\*\*) For motor operation with a continuous duty cycle at maximum continuous power the flushing is usually required. For more information please contact our technical department.

The data specified into the catalogue are for product description purpose only and must not be interpreted as warranted characteristics in legal sense. Italgrou S.r.l. reserves the right to implement modifications without notice. All partial or total reproduction and copy without written authorization of Italgrou S.r.l. is strictly forbidden.

## SHAFT CONFIGURATIONS



**INSTALLATION DRAWING**



**TECHNICAL DATA**

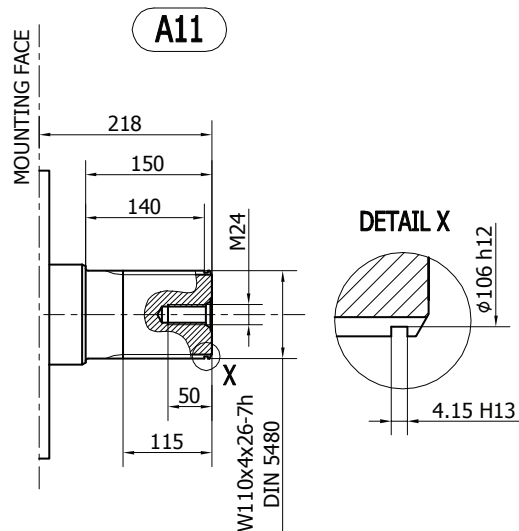
		3400	3600	3900	4300	4600	5000	5400
DISPLACEMENT	[cc]	3413	3650	3907	4343	4616	5088	5384
SPECIFIC TORQUE	[Nm/bar]	54.3	58.1	62.2	69.1	73.5	81.0	85.7
MAX. CONT. PRESSURE	[bar]	250	250	250	250	250	250	250
HYDROSTATIC TEST PRESSURE	[bar]	420	420	420	420	420	420	420
MAX. CONT. SPEED	[rpm]	180	170	160	150	140	140	130
PEAK SPEED (***)	[rpm]	220	200	200	190	190	180	170
MAX. CONT. POWER (****)	[kW]	130	130	130	130	130	130	130
MAX. POWER	[kW]	180	180	180	180	180	180	180
MAX. CASE PRESSURE	[bar]	6	6	6	6	6	6	6
DRY WEIGHT	[kg]	405	405	405	405	405	405	405
TEMPERATURE RANGE (**)	[°C]	-30÷70	-30÷70	-30÷70	-30÷70	-30÷70	-30÷70	-30÷70

- (\*) The standard distributor (D90) is shown.
- (\*\*) Please refer to the hydraulic fluid recommendations (pag. 10-11).
- (\*\*\*) Do not exceed maximum power (see pag. 13).
- (\*\*\*\*) For motor operation with a continuous duty cycle at maximum continuous power the flushing is usually required. For more information please contact our technical department.

The data specified into the catalogue are for product description purpose only and must not be interpreted as warranted characteristics in legal sense. Italgrou S.r.l. reserves the right to implement modifications without notice. All partial or total reproduction and copy without written authorization of Italgrou S.r.l. is strictly forbidden.



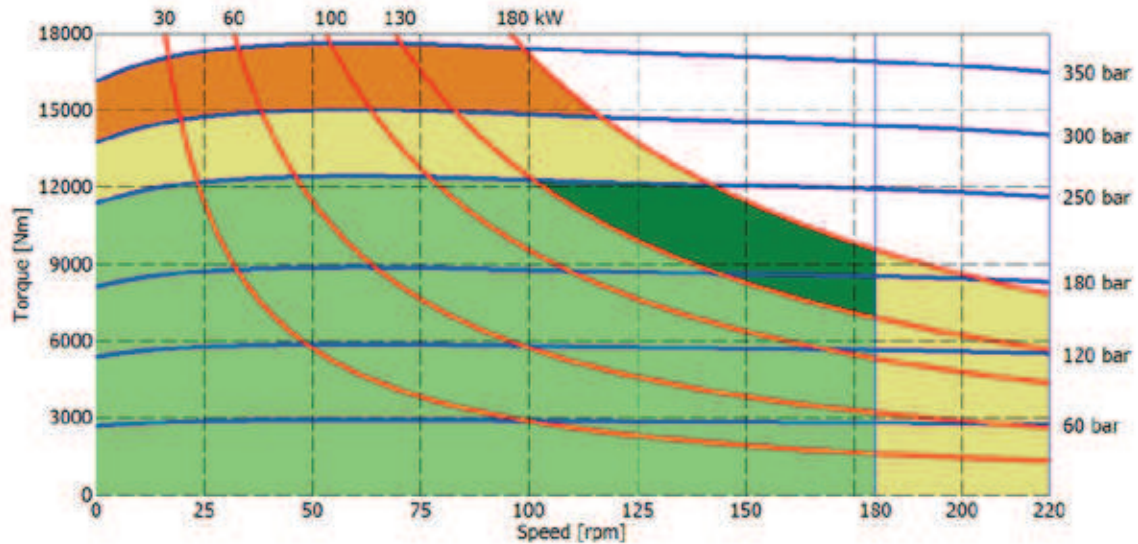
### SHAFT CONFIGURATIONS



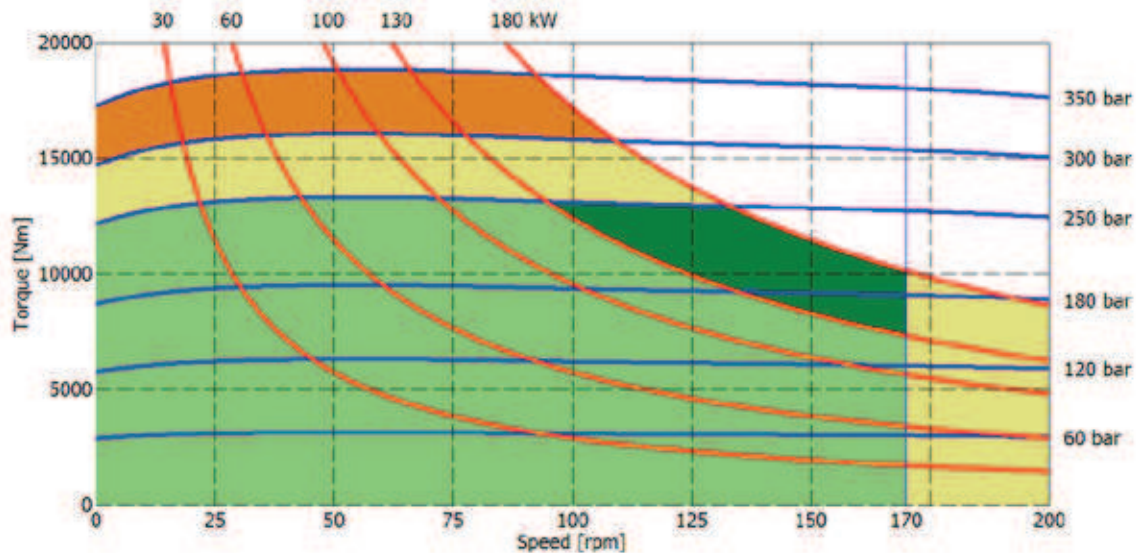
The data specified into the catalogue are for product description purpose only and must not be interpreted as warranted characteristics in legal sense. Italgroup S.r.l. reserves the right to implement modifications without notice. All partial or total reproduction and copy without written authorization of Italgroup S.r.l. is strictly forbidden.

## IAM H7 - PERFORMANCE DIAGRAMS

### 3400 cc



### 3600 cc



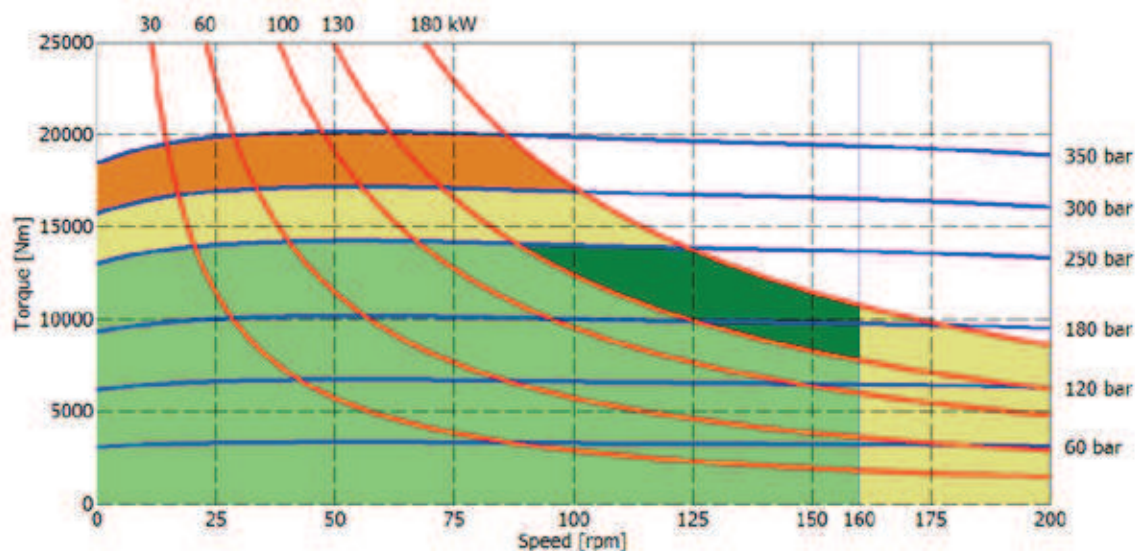
- Continuous operation
- Continuous operation with flushing or intermittent operation (see below for intermittent operation)
- Intermittent operation: permitted for a 15% of duty cycle, for 3 minutes maximum period
- Peak operation: permitted for very short periods (3-5 seconds every 10-15 minutes)

**The above diagrams are referring to the hydraulic motor working with a fluid in ideal conditions (viscosity at 40 cSt).** In case the working temperature increases and viscosity reach values under the recommended values (see hydraulic fluid recommendations) flushing must be performed or ISO oil grade must be changed. The working temperature must not overcome 70 °C.

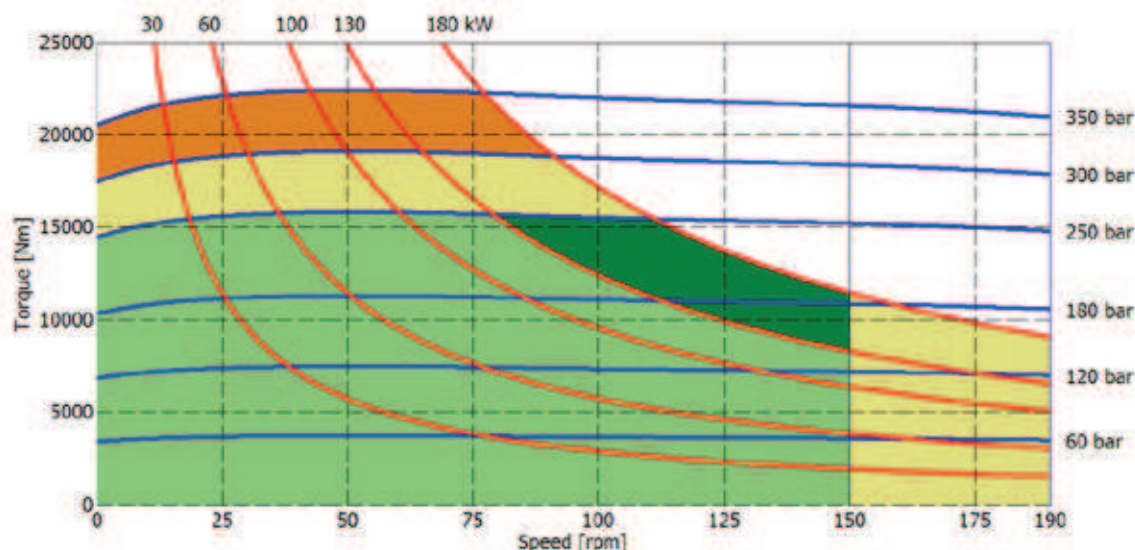
The data specified into the catalogue are for product description purpose only and must not be interpreted as warranted characteristics in legal sense. Italgrou S.r.l. reserves the right to implement modifications without notice. All partial or total reproduction and copy without written authorization of Italgrou S.r.l. is strictly forbidden.

## IAM H7 - PERFORMANCE DIAGRAMS

### 3900 cc



### 4300 cc



- Continuous operation
- Continuous operation with flushing or intermittent operation (see below for intermittent operation)
- Intermittent operation: permitted for a 15% of duty cycle, for 3 minutes maximum period
- Peak operation: permitted for very short periods (3-5 seconds every 10-15 minutes)

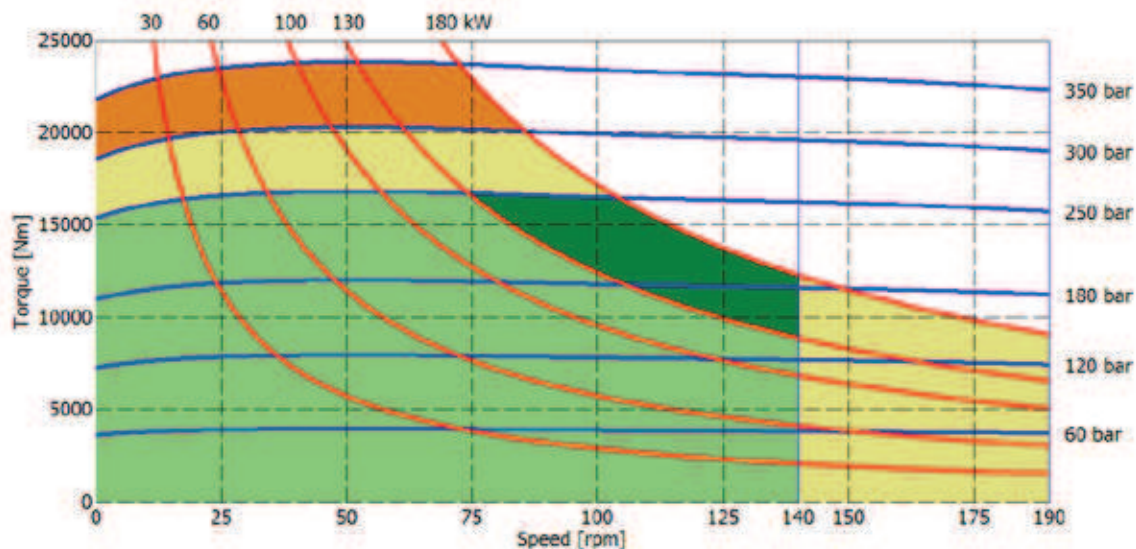
**The above diagrams are referring to the hydraulic motor working with a fluid in ideal conditions (viscosity at 40 cSt).** In case the working temperature increases and viscosity reach values under the recommended values (see hydraulic fluid recommendations) flushing must be performed or ISO oil grade must be changed. The working temperature must not overcome 70 °C.

The data specified into the catalogue are for product description purpose only and must not be interpreted as warranted characteristics in legal sense. Italgroup S.r.l. reserves the right to implement modifications without notice. All partial or total reproduction and copy without written authorization of Italgroup S.r.l. is strictly forbidden.

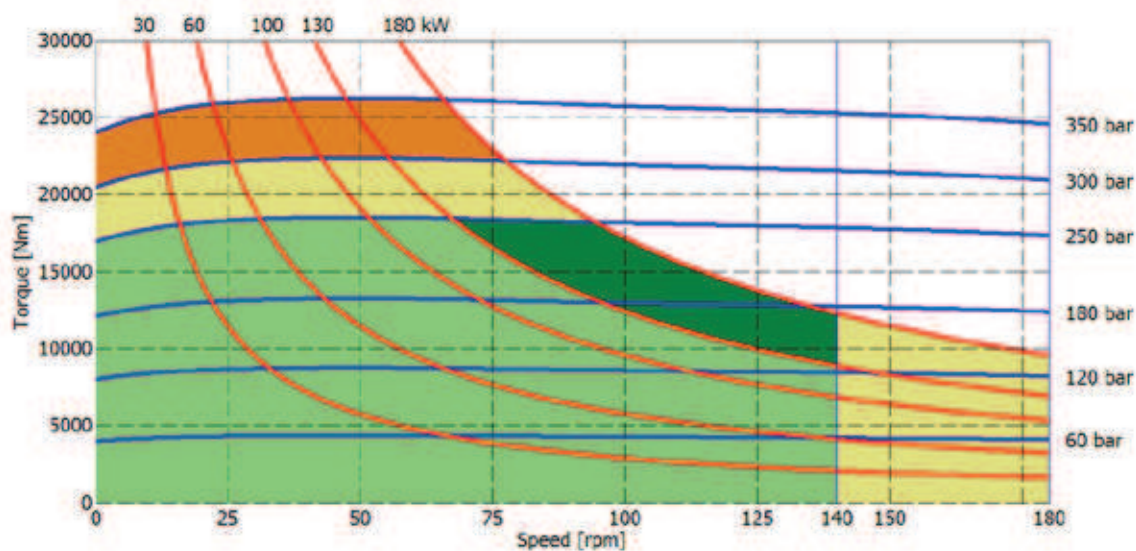


## IAM H7 - PERFORMANCE DIAGRAMS

### 4600 cc



### 5000 cc



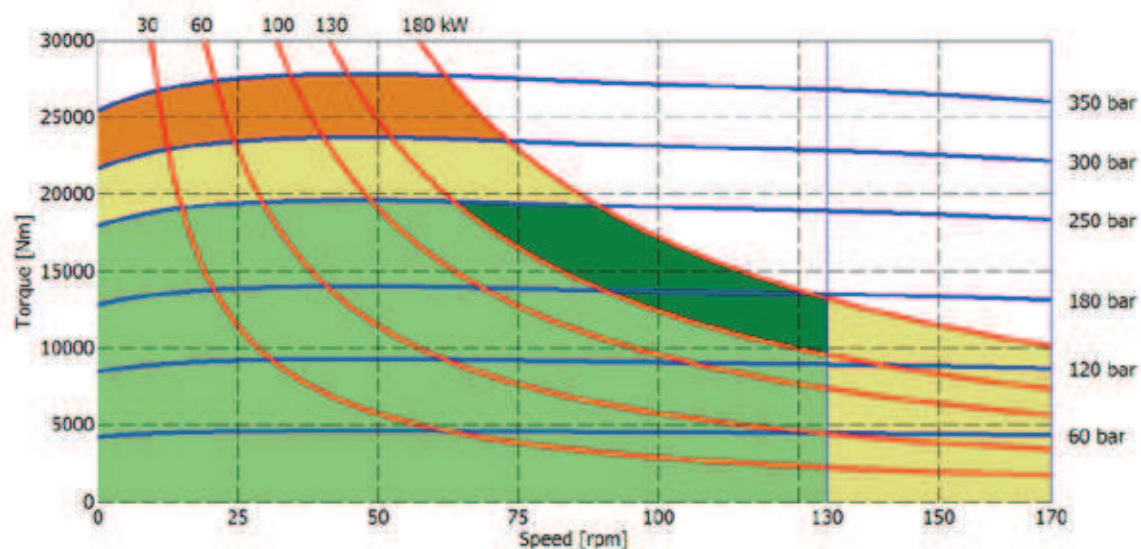
- Continuous operation
- Continuous operation with flushing or intermittent operation (see below for intermittent operation)
- Intermittent operation: permitted for a 15% of duty cycle, for 3 minutes maximum period
- Peak operation: permitted for very short periods (3-5 seconds every 10-15 minutes)

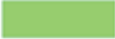

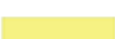

**The above diagrams are referring to the hydraulic motor working with a fluid in ideal conditions (viscosity at 40 cSt).** In case the working temperature increases and viscosity reach values under the recommended values (see hydraulic fluid recommendations) flushing must be performed or ISO oil grade must be changed. The working temperature must not overcome 70 °C.

The data specified into the catalogue are for product description purpose only and must not be interpreted as warranted characteristics in legal sense. ItalgrouP S.r.l. reserves the right to implement modifications without notice. All partial or total reproduction and copy without written authorization of ItalgrouP S.r.l. is strictly forbidden.

## IAM H7 - PERFORMANCE DIAGRAMS

**5400 cc**



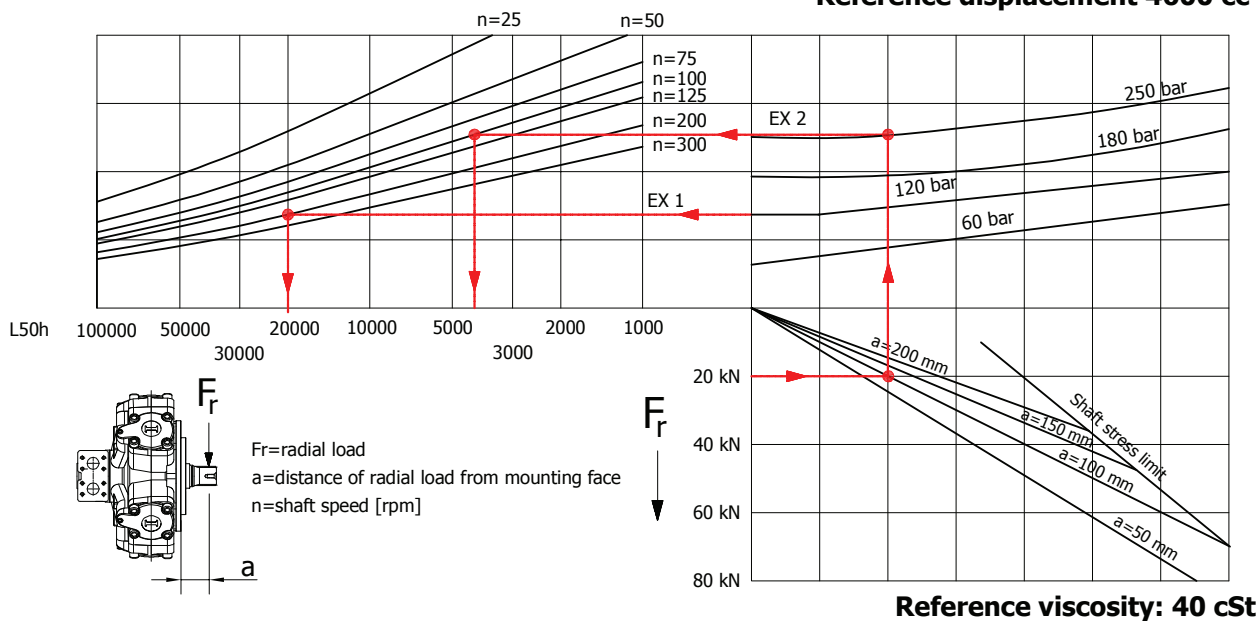
-  Continuous operation
-  Continuous operation with flushing or intermittent operation (see below for intermittent operation)
-  Intermittent operation: permitted for a 15% of duty cycle, for 3 minutes maximum period
-  Peak operation: permitted for very short periods (3-5 seconds every 10-15 minutes)

**The above diagrams are referring to the hydraulic motor working with a fluid in ideal conditions (viscosity at 40 cSt).** In case the working temperature increases and viscosity reach values under the recommended values (see hydraulic fluid recommendations) flushing must be performed or ISO oil grade must be changed. The working temperature must not overcome 70 °C.

The data specified into the catalogue are for product description purpose only and must not be interpreted as warranted characteristics in legal sense. ItalgrouP S.r.l. reserves the right to implement modifications without notice. All partial or total reproduction and copy without written authorization of ItalgrouP S.r.l. is strictly forbidden.

**BEARING LIFE**

Reference displacement 4600 cc



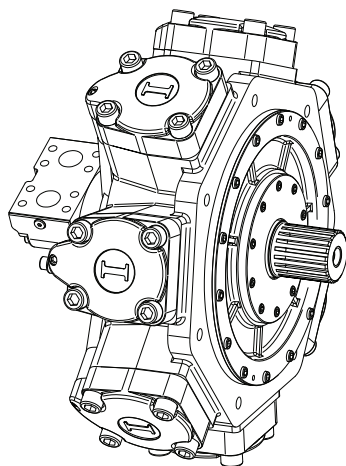
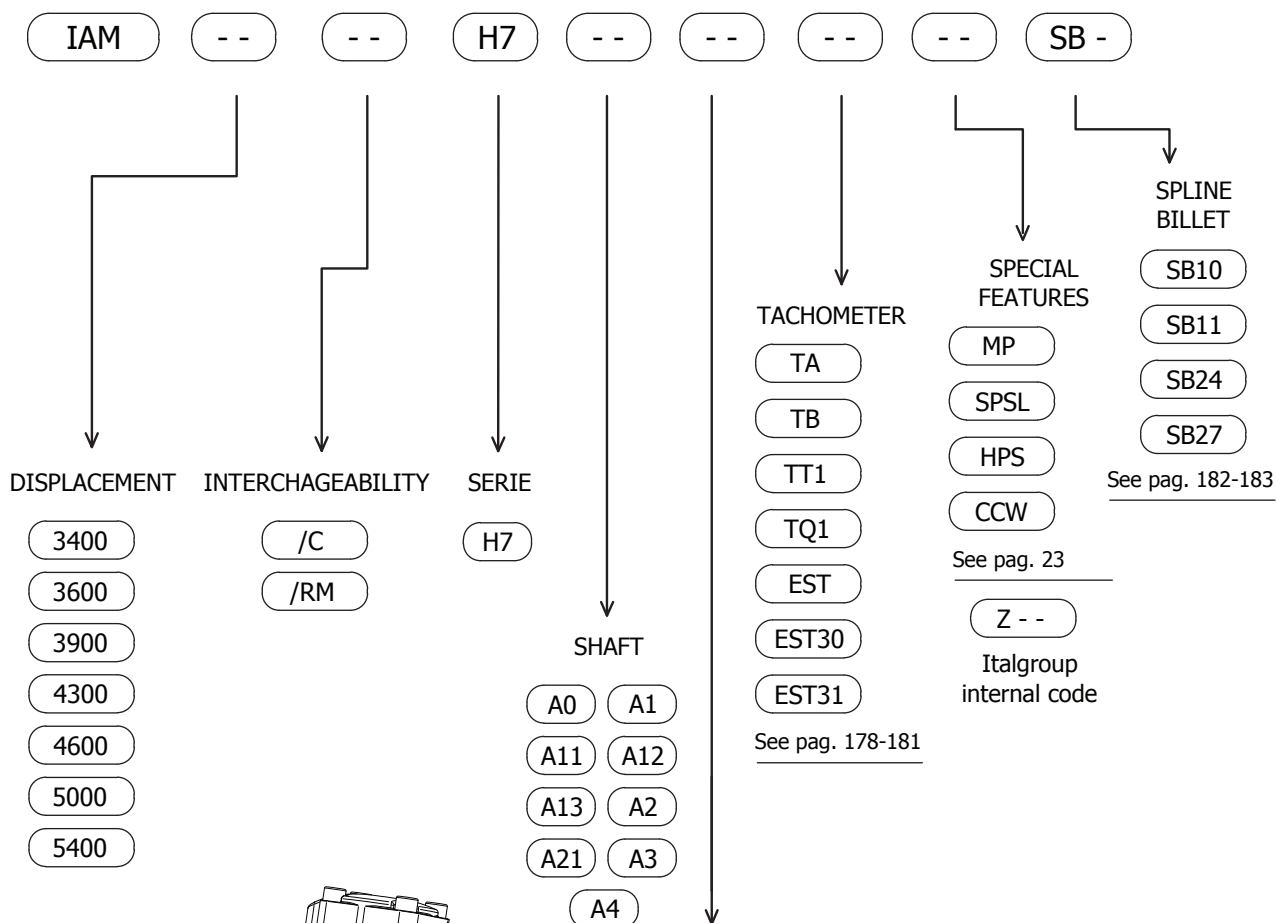
Example:

We suppose (EX1):  $p=120$  [bar],  $n=200$  [rpm]; we obtain an average lifetime of 20000 [h].

If we suppose (EX2):  $F_r=20$  [kN],  $a=100$  [mm],  $n=100$  [rpm] and  $p=250$  [bar] we obtain an average lifetime of 4000 [h].

The above data are referring to the IAM H7 series motors, displacement 4600 cc.

## IAM H7 - ORDERING CODE



### EXAMPLES:

IAM 4600 H7 A1 D90 CCW  
IAM 5000 H7 A0 D90 SB10  
IAM 5400/C H7 A0 D90