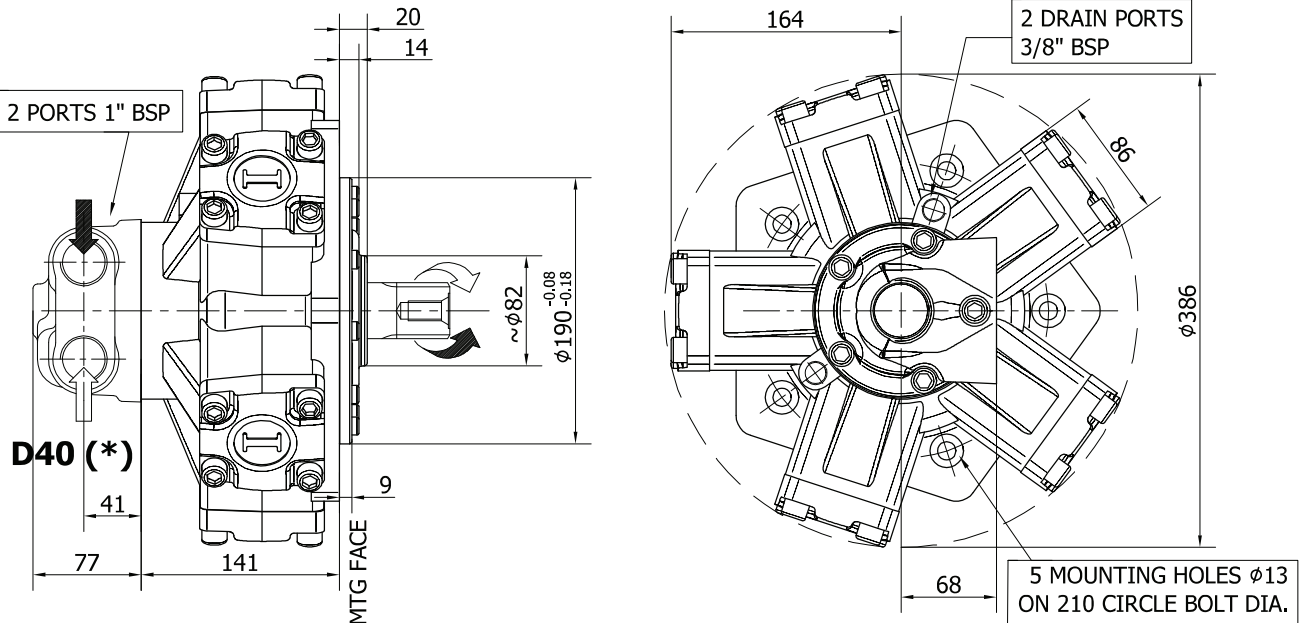

ITALGROUP SRL
IAMD SERIES - IAMD H2
GENERAL CATALOGUE
INDEX - IAMD H2

<u>IAMD H2 - INSTALLATION DRAWING</u>	Pag	28 - 29
<u>IAMD H2/GM2 - INSTALLATION DRAWING</u>	"	30 - 31
<u>IAMD H2 - PERFORMANCE DIAGRAMS</u>	"	32 - 33
<u>ORDERING CODE</u>	"	34

INSTALLATION DRAWING



TECHNICAL DATA

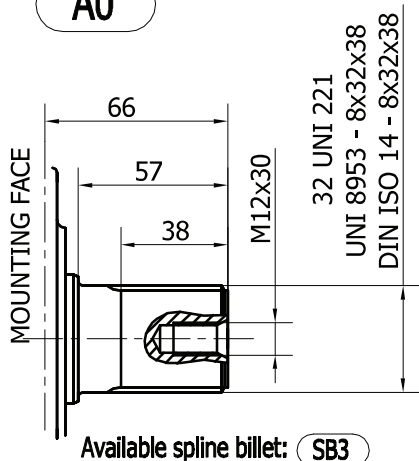
300		
DISPLACEMENT	[cc]	314
SPECIFIC TORQUE	[Nm/bar]	5.00
MAX. CONT. PRESSURE	[bar]	270
HYDROSTATIC TEST PRESSURE	[bar]	420
MAX. CONT. SPEED	[rpm]	900
PEAK SPEED (***)	[rpm]	1100
MAX. CONT. POWER (****)	[kW]	42
MAX. CONT. POWER WITH FLUSHING	[kW]	62
MAX. CASE PRESSURE	[bar]	6
DRY WEIGHT	[kg]	42
TEMPERATURE RANGE (**)	[°C]	-30÷70

- (*) The standard distributor (D40) is shown. Please refer to distributors section (pag. 148-149) for different distributor interfaces.
- (**) Please refer to the hydraulic fluid recommendations (pag. 10-11).
- (***) Do not exceed maximum continuous power with flushing (see pag. 13).
- (****) For motor operation with a continuous duty cycle at maximum continuous power the flushing is usually required. For more information please contact our technical department.

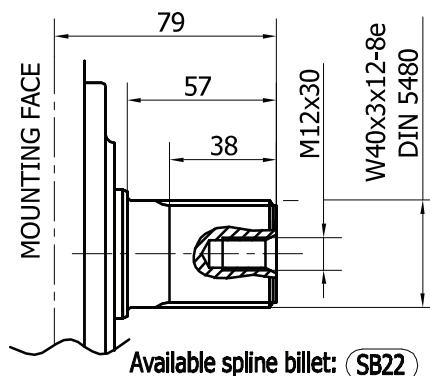
The data specified into the catalogue are for product description purpose only and must not be interpreted as warranted characteristics in legal sense. Italgrou S.r.l. reserves the right to implement modifications without notice. All partial or total reproduction and copy without written authorization of Italgrou S.r.l. is strictly forbidden.

SHAFT CONFIGURATIONS

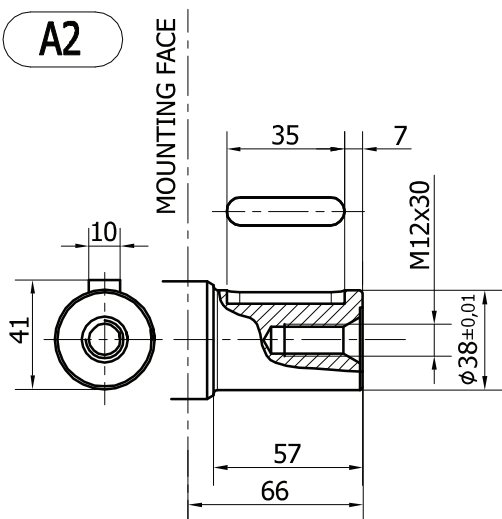
A0



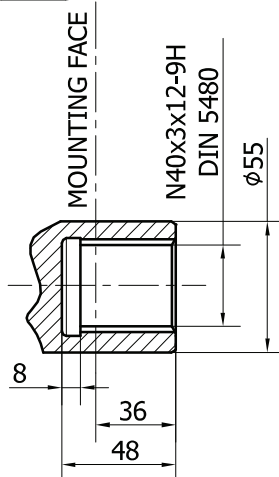
A1



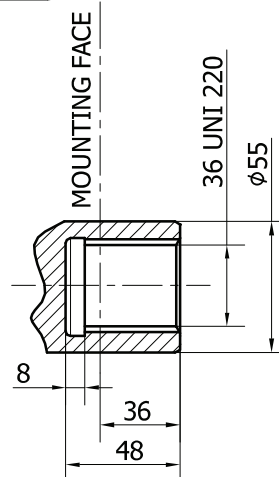
A2



A3

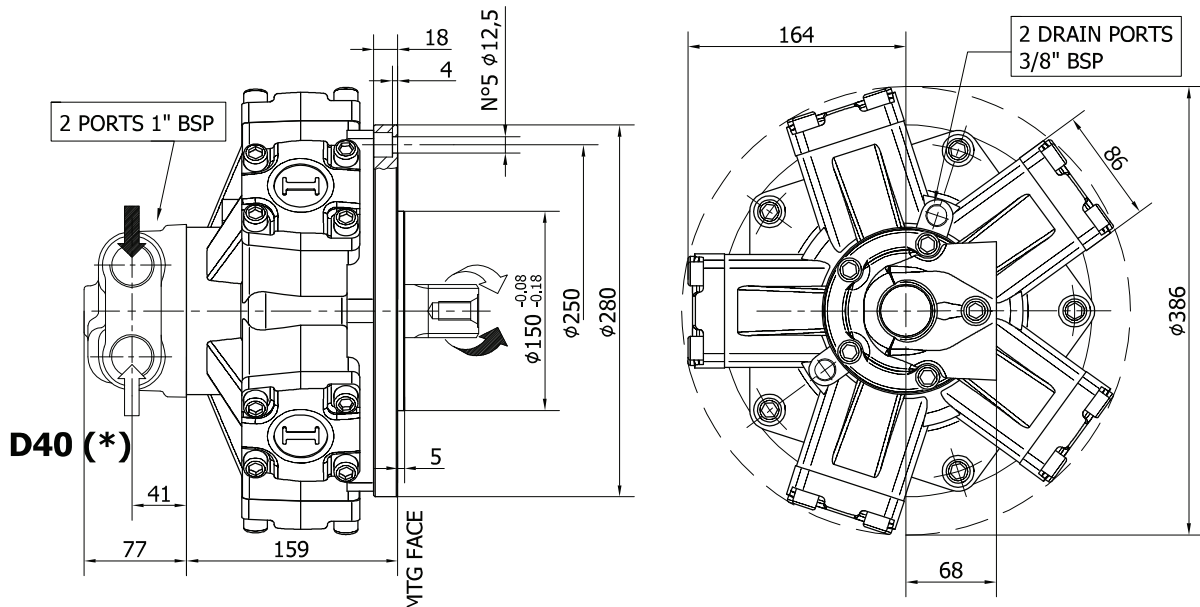


A31



The data specified into the catalogue are for product description purpose only and must not be interpreted as warranted characteristics in legal sense. Italgroup S.r.l. reserves the right to implement modifications without notice. All partial or total reproduction and copy without written authorization of Italgroup S.r.l. is strictly forbidden.

INSTALLATION DRAWING



TECHNICAL DATA

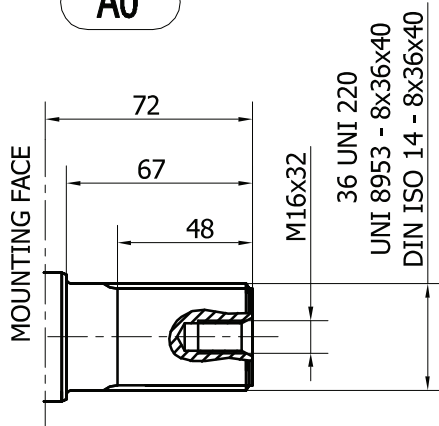
		300
DISPLACEMENT	[cc]	314
SPECIFIC TORQUE	[Nm/bar]	5.00
MAX. CONT. PRESSURE	[bar]	270
HYDROSTATIC TEST PRESSURE	[bar]	420
MAX. CONT. SPEED	[rpm]	900
PEAK SPEED (***)	[rpm]	1100
MAX. CONT. POWER (****)	[kW]	42
MAX. CONT. POWER WITH FLUSHING	[kW]	62
MAX. CASE PRESSURE	[bar]	6
DRY WEIGHT	[kg]	42
TEMPERATURE RANGE (**)	[°C]	-30÷70

- (*) The standard distributor (D40) is shown. Please refer to distributors section (pag. 148-149) for different distributor interfaces.
- (**) Please refer to the hydraulic fluid recommendations (pag. 10-11).
- (***) Do not exceed maximum continuous power with flushing (see pag. 13).
- (****) For motor operation with a continuous duty cycle at maximum continuous power the flushing is usually required. For more information please contact our technical department.

The data specified into the catalogue are for product description purpose only and must not be interpreted as warranted characteristics in legal sense. Italgrou S.r.l. reserves the right to implement modifications without notice. All partial or total reproduction and copy without written authorization of Italgrou S.r.l. is strictly forbidden.

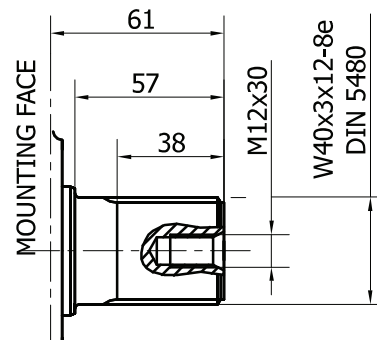
SHAFT CONFIGURATIONS

A0



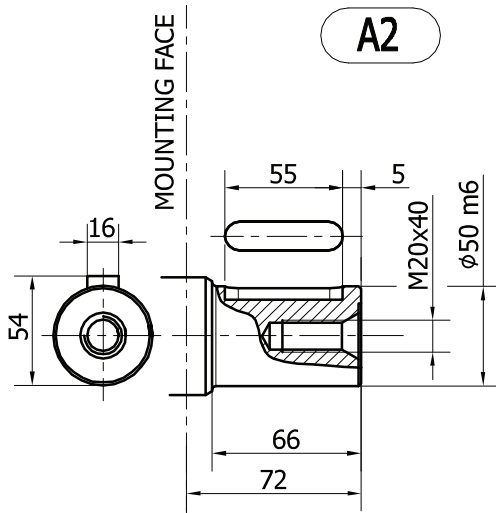
Available spline billet: **SB3**

A1

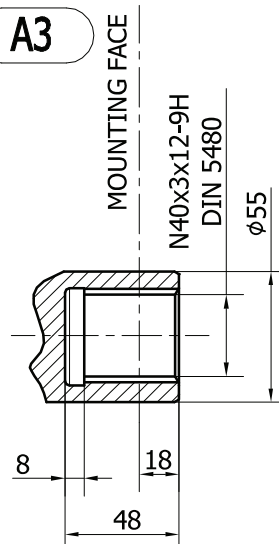


Available spline billet: **SB22**

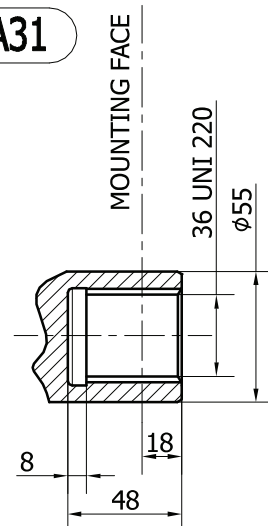
A2



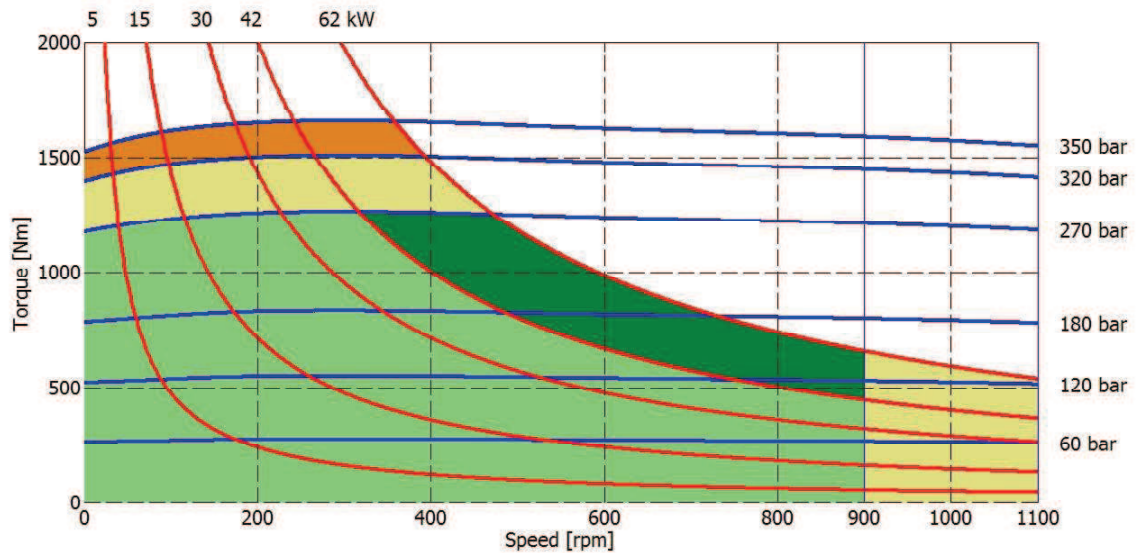
A3



A31



300 cc

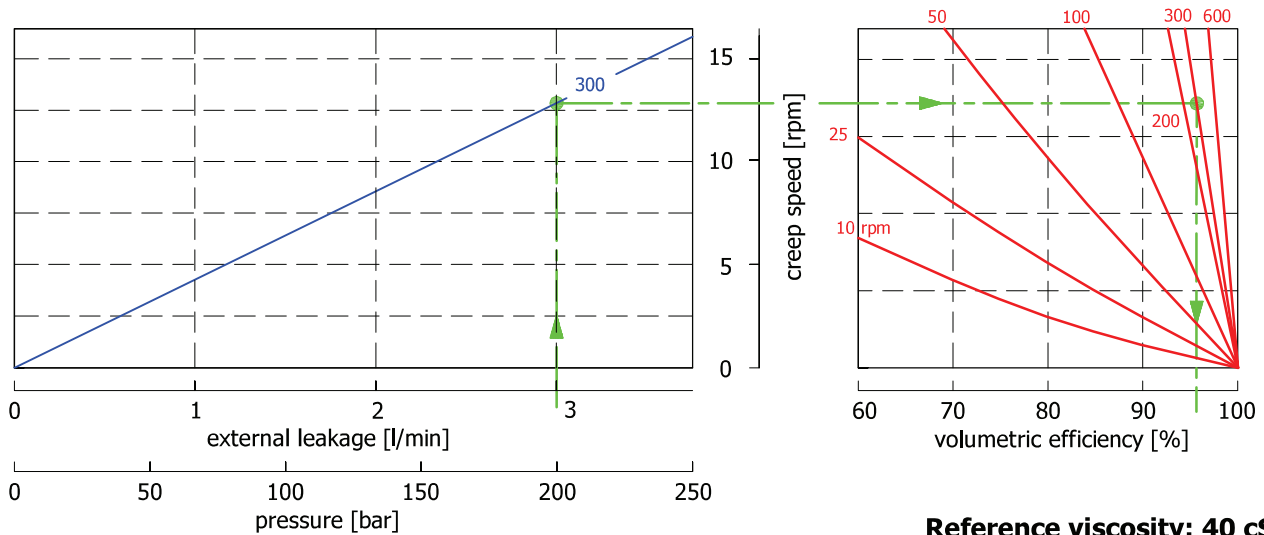


- Continuous operation
- Continuous operation with flushing or intermittent operation (see below for intermittent operation)
- Intermittent operation: permitted for a 15% of duty cycle, for 3 minutes maximum period
- Peak operation: permitted for very short periods (3-5 seconds every 10-15 minutes)

The above diagrams are referring to the hydraulic motor working with a fluid in ideal conditions (viscosity at 40 cSt). In case the working temperature increases and viscosity reach values under the recommended values (see hydraulic fluid recommendations) flushing must be performed or ISO oil grade must be changed. The working temperature must not overcome 70 °C.

The data specified into the catalogue are for product description purpose only and must not be interpreted as warranted characteristics in legal sense. Italgrou S.r.l. reserves the right to implement modifications without notice. All partial or total reproduction and copy without written authorization of Italgrou S.r.l. is strictly forbidden.

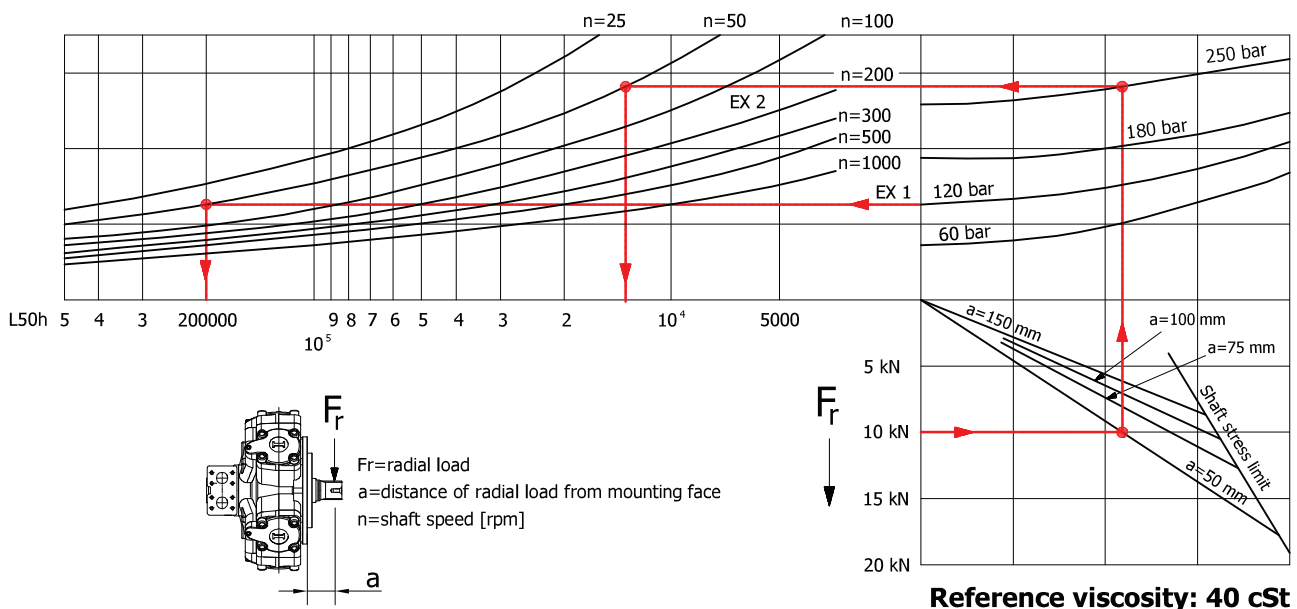
CREEP SPEED - VOLUMETRIC EFFICIENCY



Example:

We suppose (300 cc): $p=200$ [bar], we obtain: external leakage 2,9 [l/min], shaft creep speed 12,7 [rpm].
If we suppose (300 cc): $p=200$ [bar] and $n=300$ [rpm] we obtain a volumetric efficiency of 96%;

BEARING LIFE

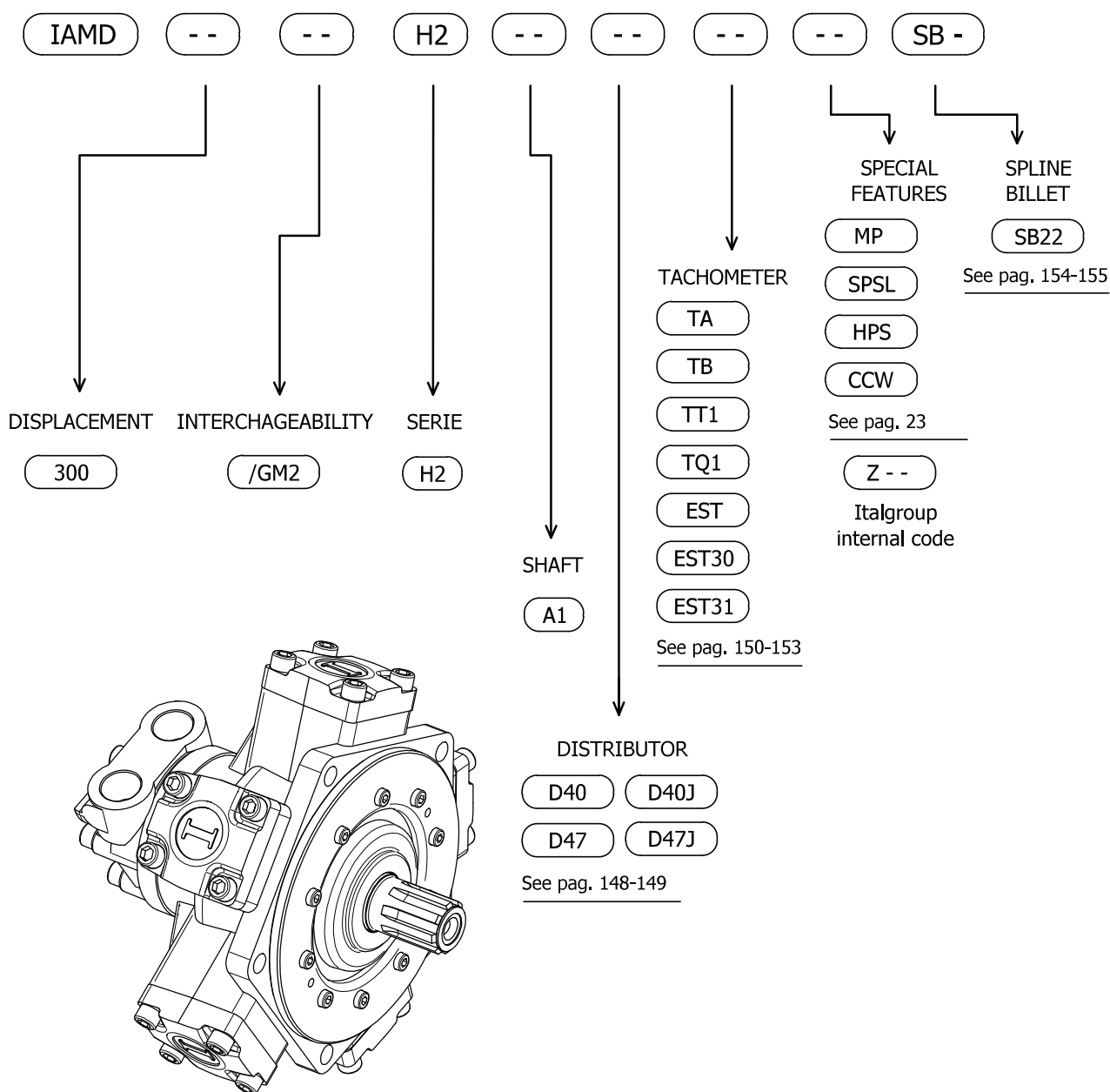


Example:

We suppose (EX1): $p=120$ [bar], $n=50$ [rpm]; we obtain an average lifetime of 200000 [h].

If we suppose (EX2): $F_r=10$ [kN], $a=50$ [mm], $n=50$ [rpm] and $p=250$ [bar] we obtain an average lifetime of 12500 [h].

IAMD H2 - ORDERING CODE



EXAMPLES:

IAMD 300 H2 A1 D40
IAMD 300/GM2 H2 A1 D40J
IAMD 300/GM2 H2 A1 D47 CCW SB22