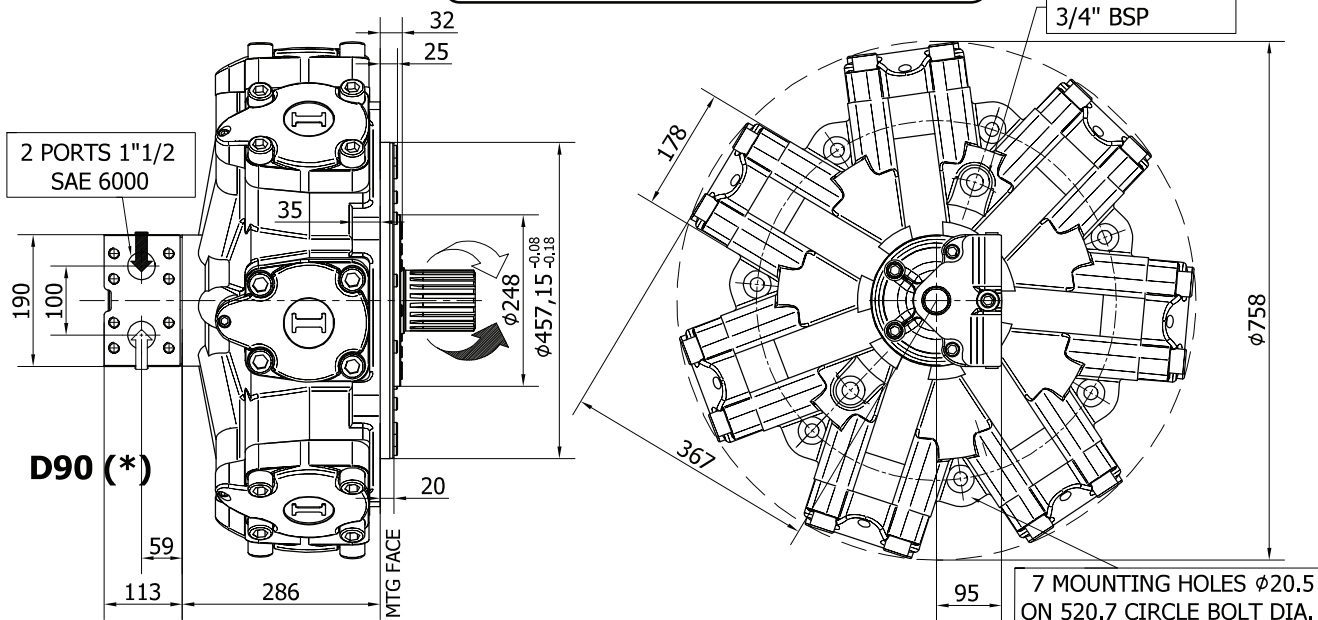

ITALGROUP SRL
IAMD SERIES - IAMD H7
GENERAL CATALOGUE
INDEX - IAMD H7

<u>IAMD H7 - INSTALLATION DRAWINGS</u>	Pag	120 - 122
<u>IAMD H7/C - INSTALLATION DRAWINGS</u>	"	123 - 125
<u>IAMD H7/RM - INSTALLATION DRAWINGS</u>	"	126 - 127
<u>IAMD H7 - PERFORMANCE DIAGRAMS</u>	"	128 - 132
<u>IAMD H7 - ORDERING CODE</u>	"	133

INSTALLATION DRAWING

Available distributor flange: **FL16**
for S04, refer to page 157 (distributor fitting D90)

2 DRAIN PORTS
3/4" BSP



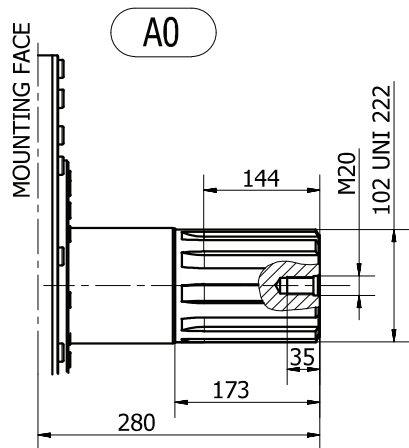
TECHNICAL DATA

		3400	3600	3900	4300	4600	5000	5400
DISPLACEMENT	[cc]	3413	3650	3907	4343	4616	5088	5384
SPECIFIC TORQUE	[Nm/bar]	54.3	58.1	62.2	69.1	73.5	81	85.7
MAX. CONT. PRESSURE	[bar]	270	270	270	270	270	270	270
HYDROSTATIC TEST PRESSURE	[bar]	420	420	420	420	420	420	420
MAX. CONT. SPEED	[rpm]	200	185	175	160	150	140	130
PEAK SPEED (***)	[rpm]	220	210	200	185	170	160	150
MAX. CONT. POWER (****)	[kW]	230	230	230	230	230	230	230
MAX. CONT. POWER WITH FLUSHING	[kW]	258	258	258	258	258	258	258
MAX. CASE PRESSURE	[bar]	6	6	6	6	6	6	6
DRY WEIGHT	[kg]	405	405	405	405	405	405	405
TEMPERATURE RANGE (**)	[°C]	-30÷70	-30÷70	-30÷70	-30÷70	-30÷70	-30÷70	-30÷70

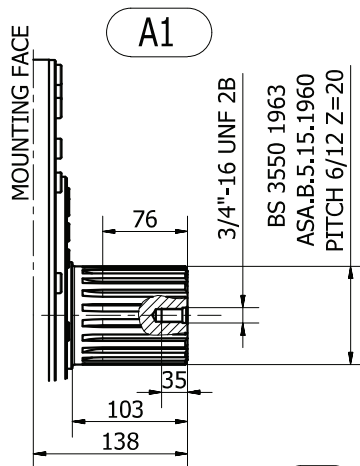
- (*) The standard distributor (D90) is shown. Please refer to distributors section (pag. 148-149) for different distributor interfaces.
- (**) Please refer to the hydraulic fluid recommendations (pag. 10-11).
- (***) Do not exceed maximum continuous power with flushing (see pag. 13).
- (****) For motor operation with a continuous duty cycle at maximum continuous power the flushing is usually required. For more information please contact our technical department.

The data specified into the catalogue are for product description purpose only and must not be interpreted as warranted characteristics in legal sense. Italgroup S.r.l. reserves the right to implement modifications without notice. All partial or total reproduction and copy without written authorization of Italgroup S.r.l. is strictly forbidden.

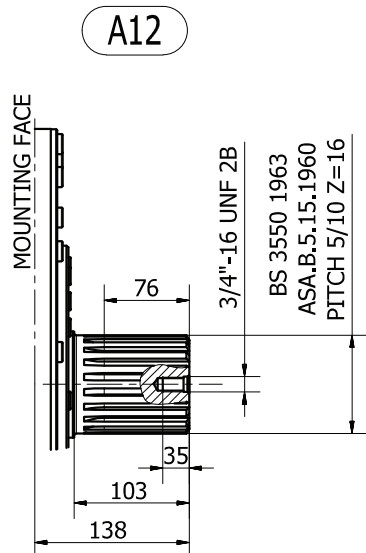
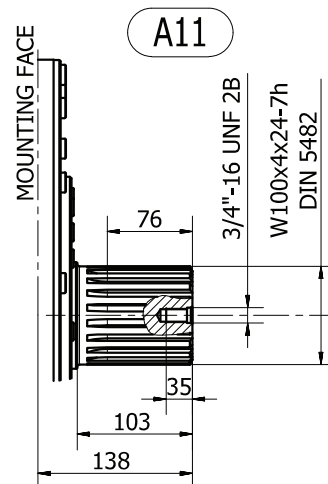
SHAFT CONFIGURATIONS



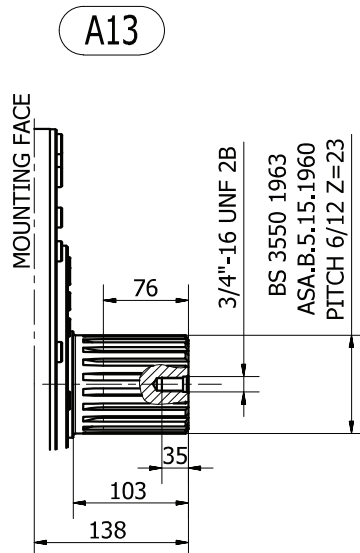
Available spline billet: (SB11)



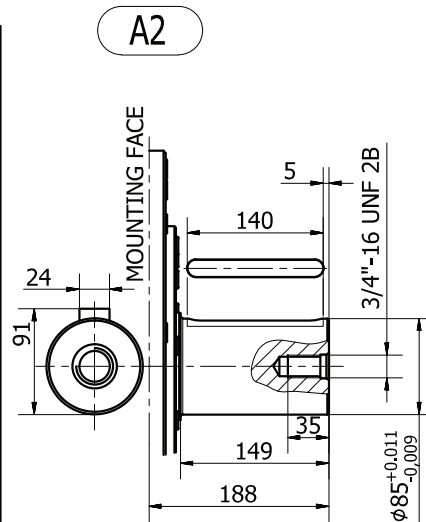
Available spline billet: (SB10)



Available spline billet: (SB27)

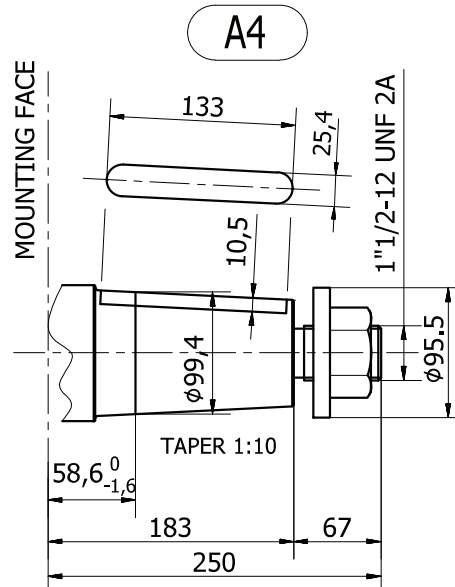
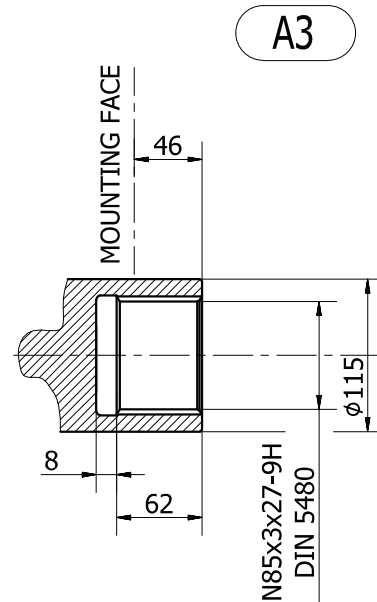
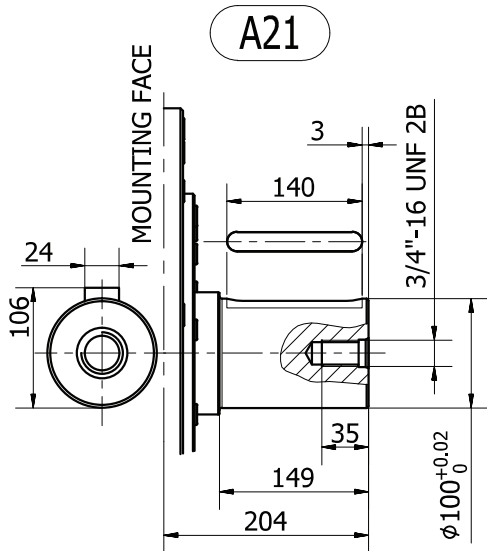


Available spline billet: (SB24)



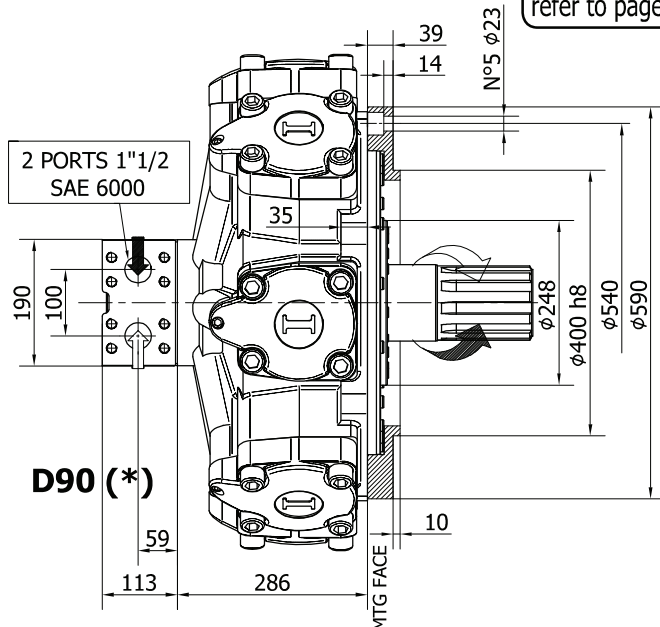
The data specified into the catalogue are for product description purpose only and must not be interpreted as warranted characteristics in legal sense. Italgroup S.r.l. reserves the right to implement modifications without notice. All partial or total reproduction and copy without written authorization of Italgroup S.r.l. is strictly forbidden.

SHAFT CONFIGURATIONS

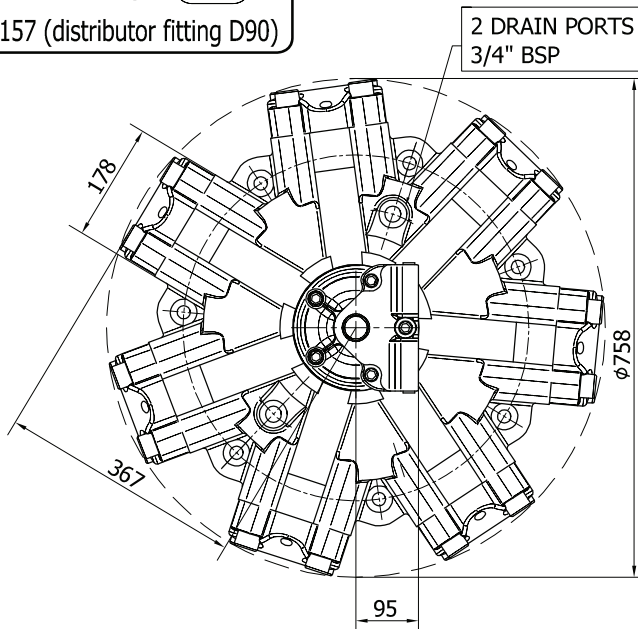


The data specified into the catalogue are for product description purpose only and must not be interpreted as warranted characteristics in legal sense. Italgroupp S.r.l. reserves the right to implement modifications without notice. All partial or total reproduction and copy without written authorization of Italgroupp S.r.l. is strictly forbidden.

INSTALLATION DRAWING



Available distributor flange: **FL8**
refer to page 157 (distributor fitting D90)



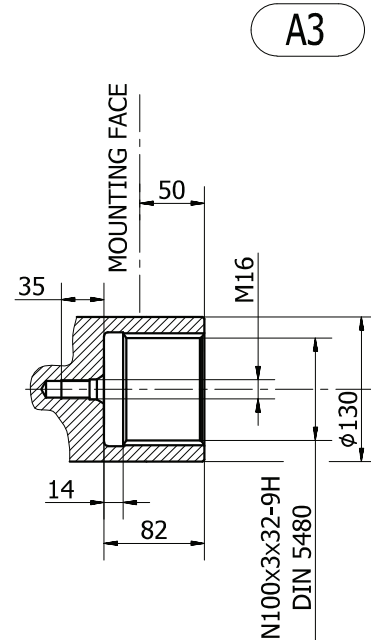
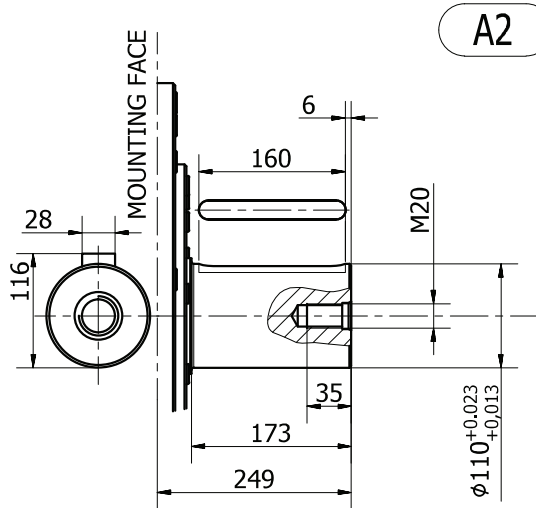
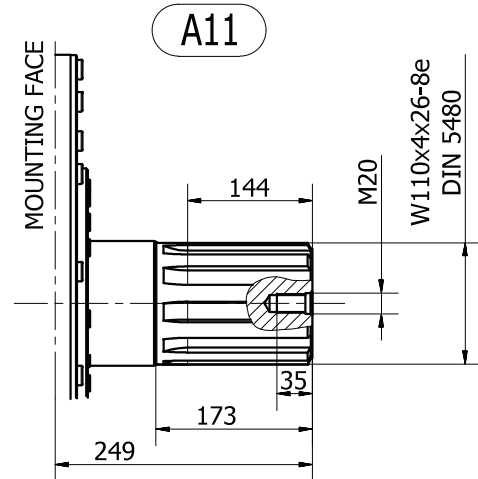
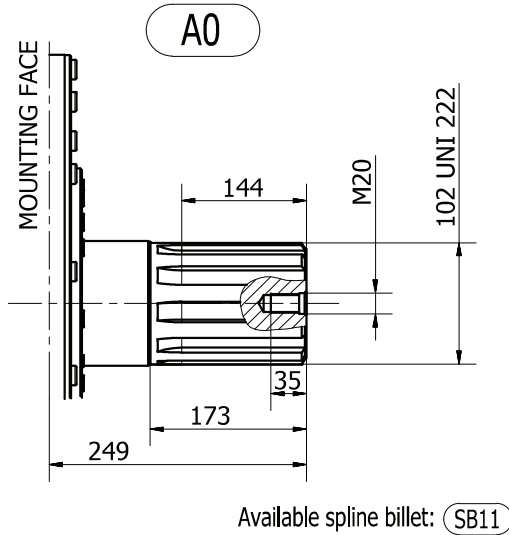
TECHNICAL DATA

		3400	3600	3900	4300	4600	5000	5400
DISPLACEMENT	[cc]	3413	3650	3907	4343	4616	5088	5384
SPECIFIC TORQUE	[Nm/bar]	54.3	58.1	62.2	69.1	73.5	81	85.7
MAX. CONT. PRESSURE	[bar]	270	270	270	270	270	270	270
HYDROSTATIC TEST PRES-SURE	[bar]	420	420	420	420	420	420	420
MAX. CONT. SPEED	[rpm]	200	185	175	160	150	140	130
PEAK SPEED (***)	[rpm]	220	210	200	185	170	160	150
MAX. CONT. POWER (****)	[kW]	230	230	230	230	230	230	230
MAX. CONT. POWER WITH FLUSHING	[kW]	258	258	258	258	258	258	258
MAX. CASE PRESSURE	[bar]	6	6	6	6	6	6	6
DRY WEIGHT	[kg]	405	405	405	405	405	405	405
TEMPERATURE RANGE (**)	[°C]	-30÷70	-30÷70	-30÷70	-30÷70	-30÷70	-30÷70	-30÷70

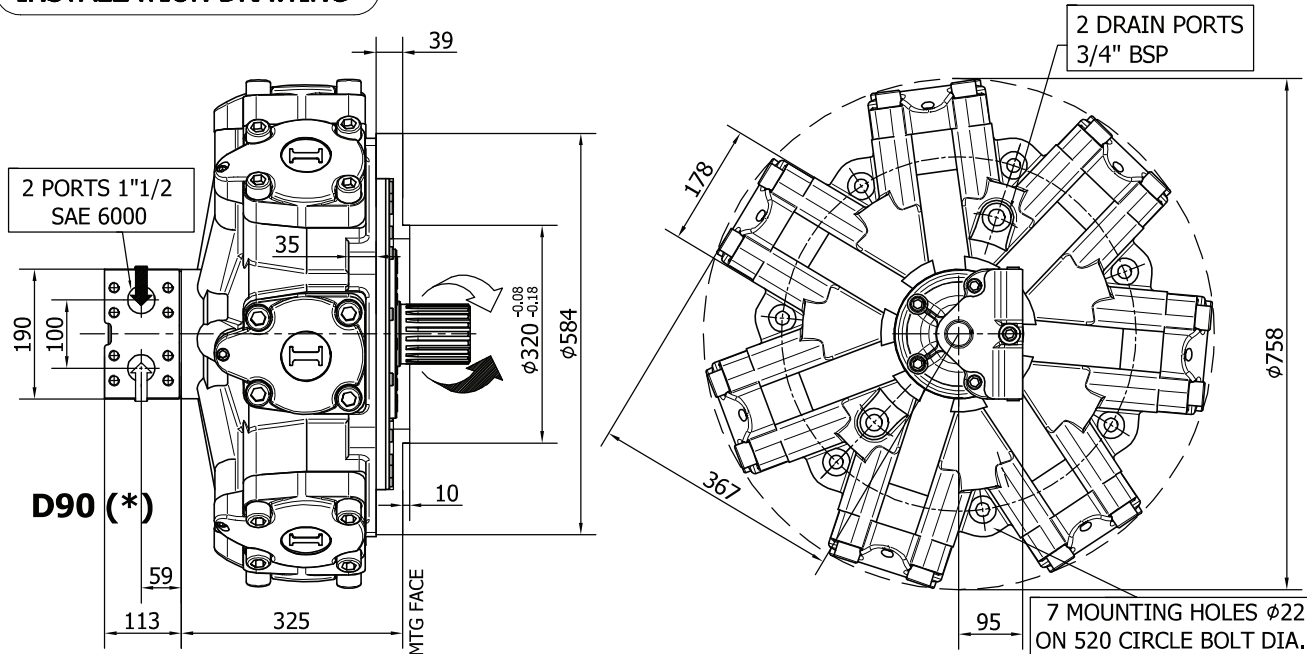
- (*) The standard distributor (D90) is shown. Please refer to distributors section (pag. 148-149) for different distributor interfaces.
 - (**) Please refer to the hydraulic fluid recommendations (pag. 10-11).
 - (***) Do not exceed maximum continuous power with flushing (see pag. 13).
 - (****) For motor operation with a continuous duty cycle at maximum continuous power the flushing is usually required.
- For more information please contact our technical department.

The data specified into the catalogue are for product description purpose only and must not be interpreted as warranted characteristics in legal sense. Italgroup S.r.l. reserves the right to implement modifications without notice. All partial or total reproduction and copy without written authorization of Italgroup S.r.l. is strictly forbidden.

SHAFT CONFIGURATIONS



INSTALLATION DRAWING



TECHNICAL DATA

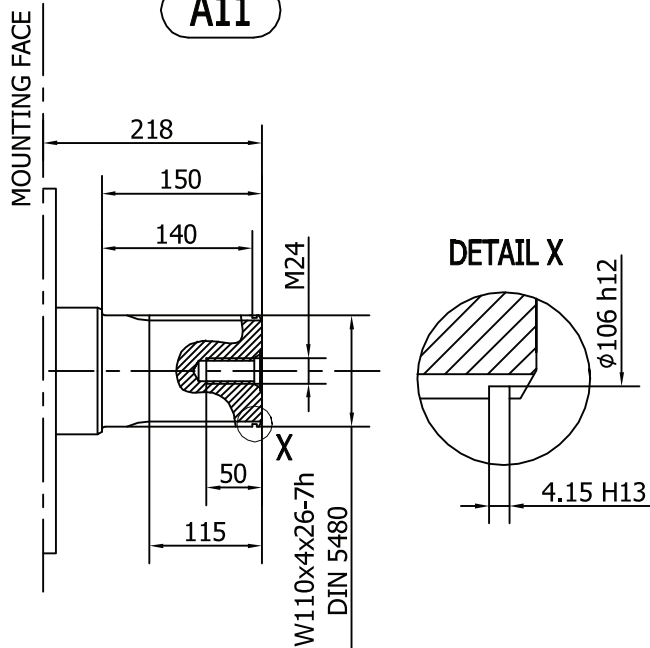
		3400	3600	3900	4300	4600	5000	5400
DISPLACEMENT	[cc]	3413	3650	3907	4343	4616	5088	5384
SPECIFIC TORQUE	[Nm/bar]	54.3	58.1	62.2	69.1	73.5	81	85.7
MAX. CONT. PRESSURE	[bar]	270	270	270	270	270	270	270
HYDROSTATIC TEST PRESSURE	[bar]	420	420	420	420	420	420	420
MAX. CONT. SPEED	[rpm]	200	185	175	160	150	140	130
PEAK SPEED (***)	[rpm]	220	210	200	185	170	160	150
MAX. CONT. POWER (****)	[kW]	230	230	230	230	230	230	230
MAX. CONT. POWER WITH FLUSHING	[kW]	258	258	258	258	258	258	258
MAX. CASE PRESSURE	[bar]	6	6	6	6	6	6	6
DRY WEIGHT	[kg]	405	405	405	405	405	405	405
TEMPERATURE RANGE (**)	[°C]	-30÷70	-30÷70	-30÷70	-30÷70	-30÷70	-30÷70	-30÷70

- (*) The standard distributor (D90) is shown. Please refer to distributors section (pag. 148-149) for different distributor interfaces.
- (**) Please refer to the hydraulic fluid recommendations (pag. 10-11).
- (***) Do not exceed maximum continuous power with flushing (see pag. 13).
- (****) For motor operation with a continuous duty cycle at maximum continuous power the flushing is usually required. For more information please contact our technical department.

The data specified into the catalogue are for product description purpose only and must not be interpreted as warranted characteristics in legal sense. Italgrou S.r.l. reserves the right to implement modifications without notice. All partial or total reproduction and copy without written authorization of Italgrou S.r.l. is strictly forbidden.

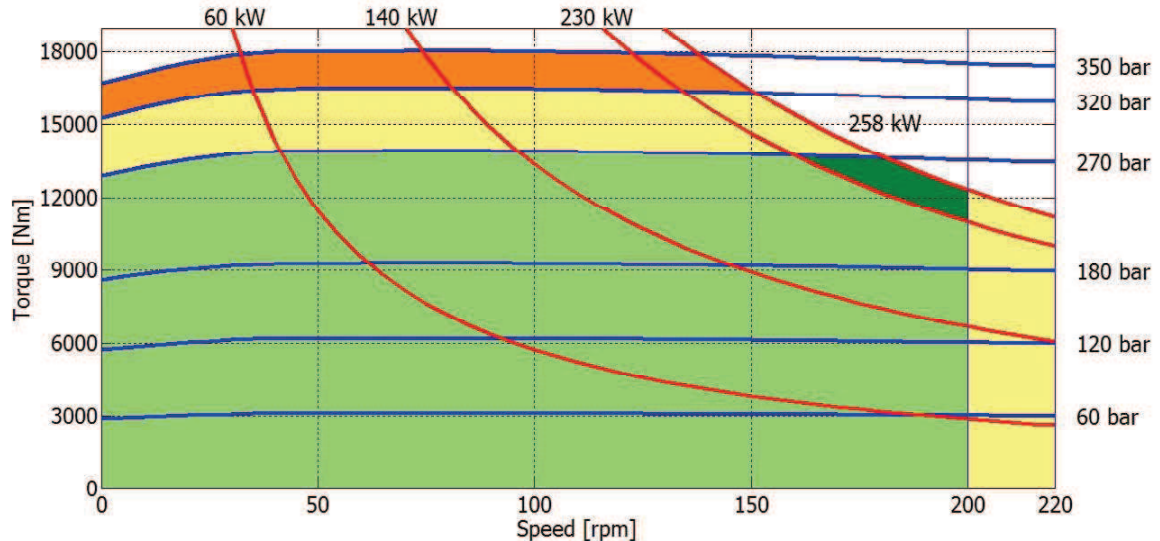
SHAFT CONFIGURATIONS

A11

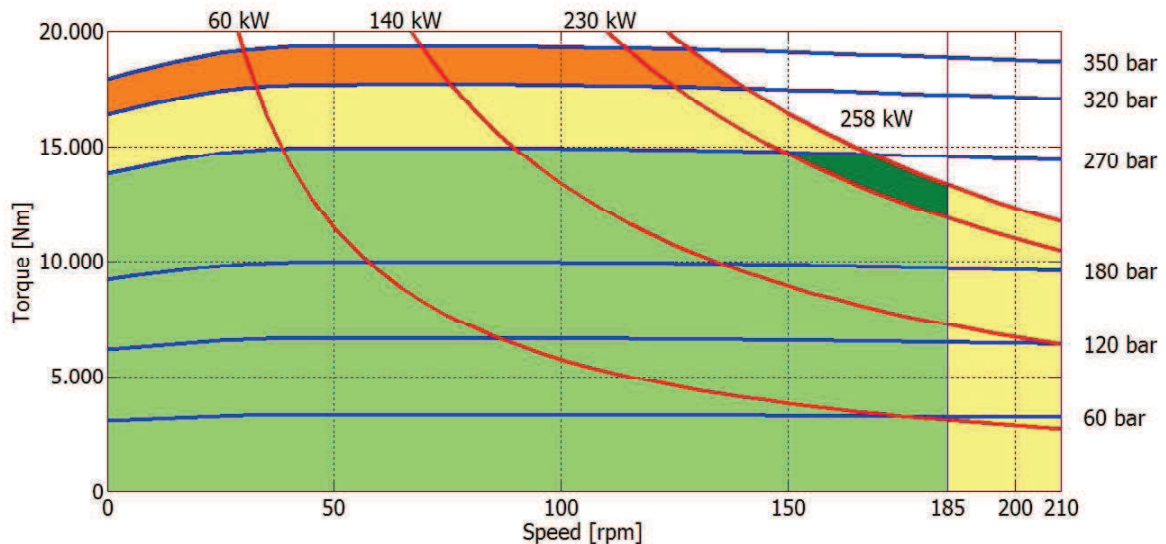


IAMD H7 - PERFORMANCE DIAGRAMS

3400 cc



3600 cc



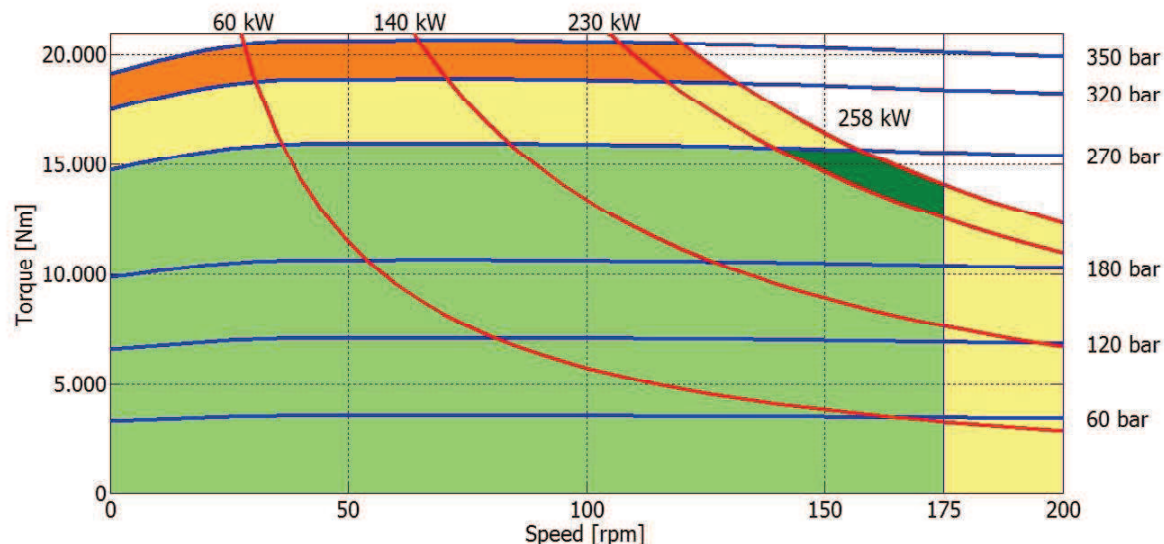
- Continuous operation
- Continuous operation with flushing or intermittent operation (see below for intermittent operation)
- Intermittent operation: permitted for a 15% of duty cycle, for 3 minutes maximum period
- Peak operation: permitted for very short periods (3-5 seconds every 10-15 minutes)

The above diagrams are referring to the hydraulic motor working with a fluid in ideal conditions (viscosity at 40 cSt). In case the working temperature increases and viscosity reach values under the recommended values (see hydraulic fluid recommendations) flushing must be performed or ISO oil grade must be changed. The working temperature must not overcome 70 °C.

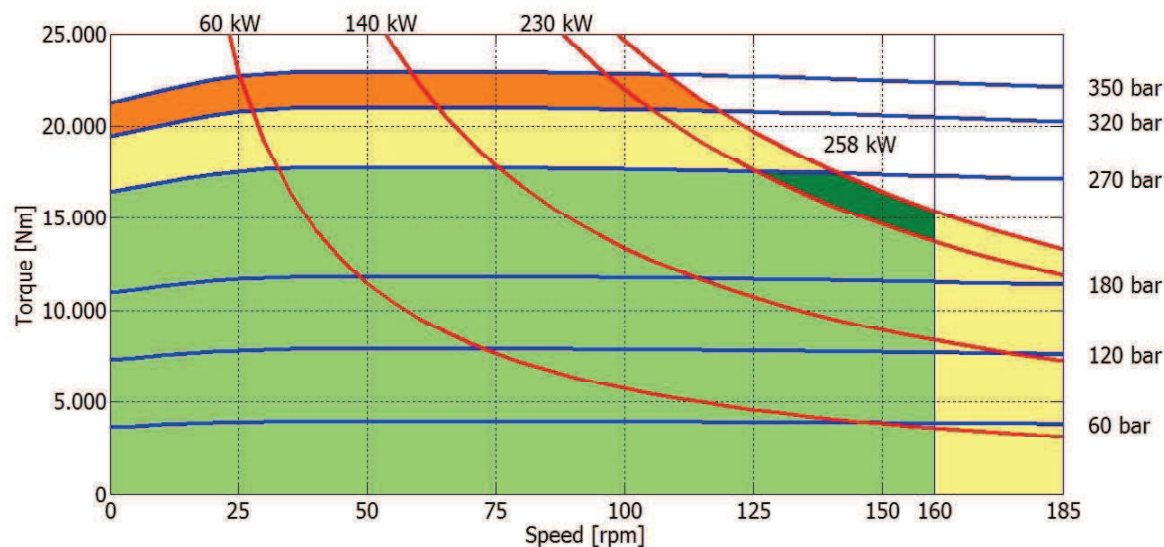
The data specified into the catalogue are for product description purpose only and must not be interpreted as warranted characteristics in legal sense. ItalgrouP S.r.l. reserves the right to implement modifications without notice. All partial or total reproduction and copy without written authorization of ItalgrouP S.r.l. is strictly forbidden.

IAMD H7 - PERFORMANCE DIAGRAMS

3900 cc



4300 cc



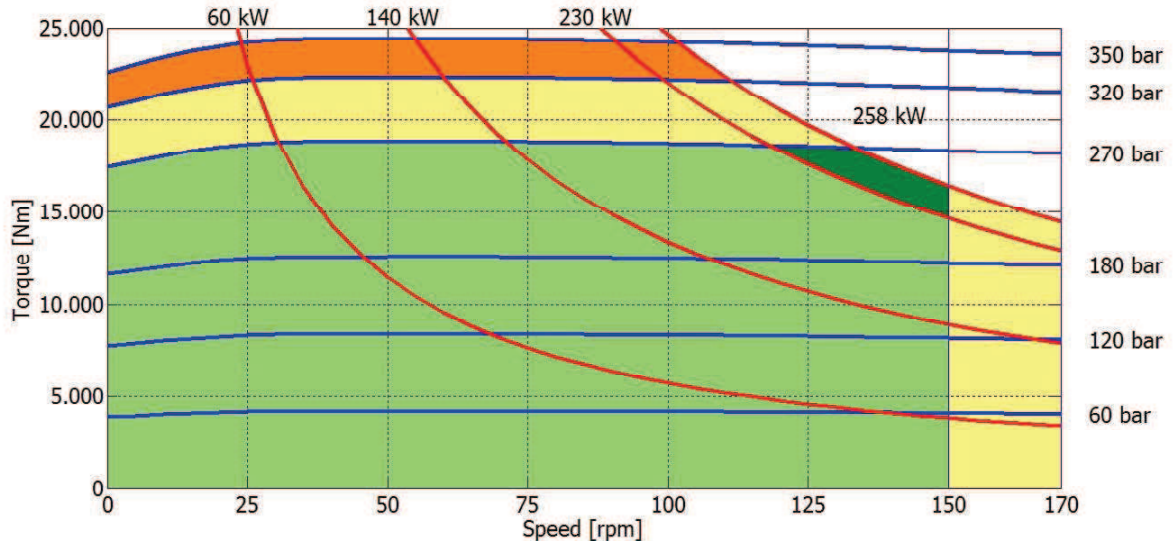
- Continuous operation
- Continuous operation with flushing or intermittent operation (see below for intermittent operation)
- Intermittent operation: permitted for a 15% of duty cycle, for 3 minutes maximum period
- Peak operation: permitted for very short periods (3-5 seconds every 10-15 minutes)

The above diagrams are referring to the hydraulic motor working with a fluid in ideal conditions (viscosity at 40 cSt). In case the working temperature increases and viscosity reach values under the recommended values (see hydraulic fluid recommendations) flushing must be performed or ISO oil grade must be changed. The working temperature must not overcome 70 °C.

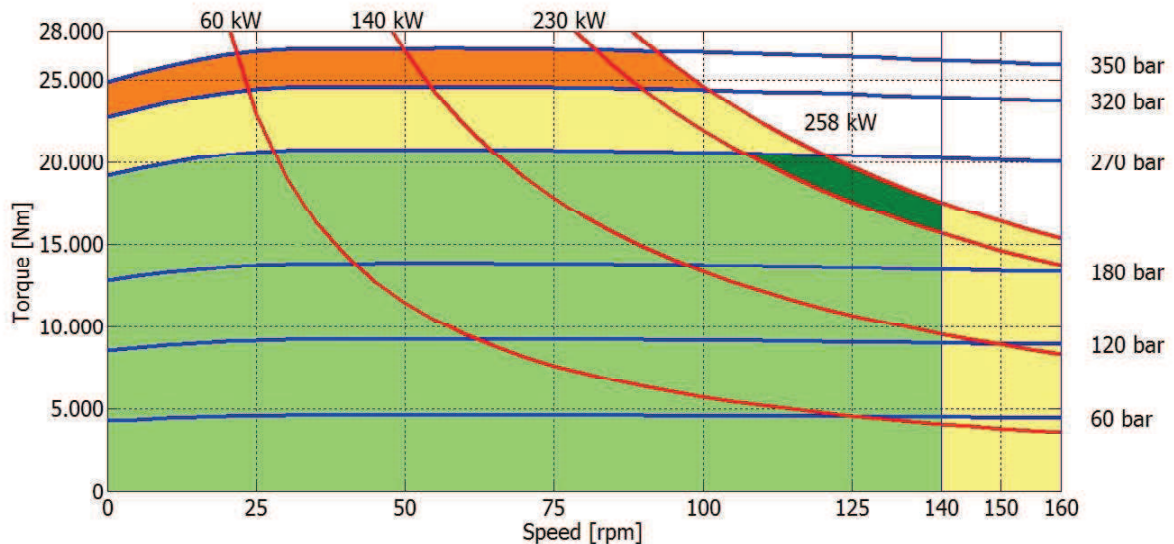
The data specified into the catalogue are for product description purpose only and must not be interpreted as warranted characteristics in legal sense. ItalgrouP S.r.l. reserves the right to implement modifications without notice. All partial or total reproduction and copy without written authorization of ItalgrouP S.r.l. is strictly forbidden.

IAMD H7 - PERFORMANCE DIAGRAMS

4600 cc



5000 cc



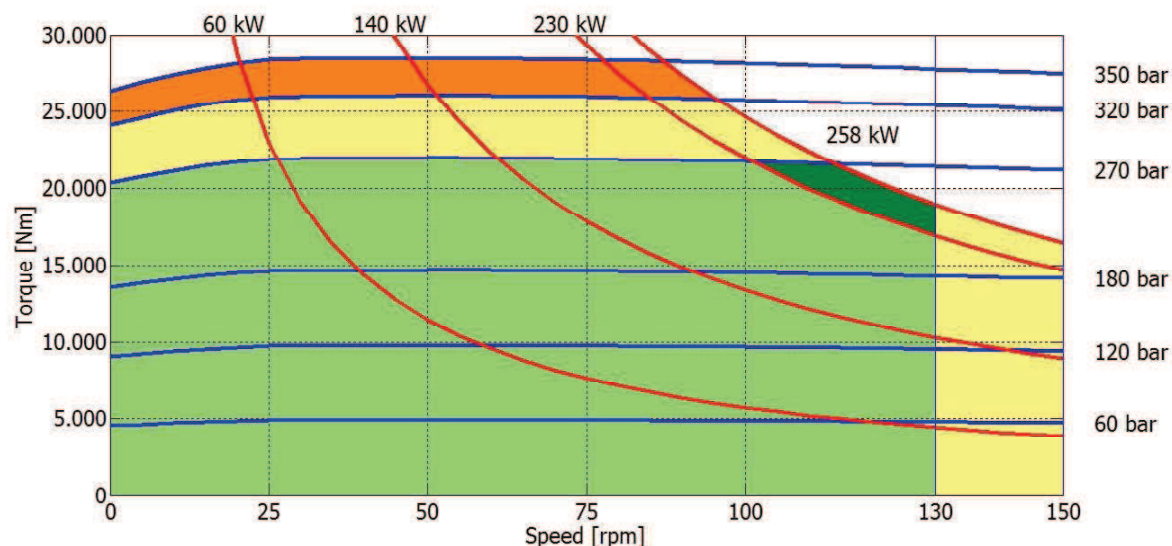
- Continuous operation
- Continuous operation with flushing or intermittent operation (see below for intermittent operation)
- Intermittent operation: permitted for a 15% of duty cycle, for 3 minutes maximum period
- Peak operation: permitted for very short periods (3-5 seconds every 10-15 minutes)

The above diagrams are referring to the hydraulic motor working with a fluid in ideal conditions (viscosity at 40 cSt). In case the working temperature increases and viscosity reach values under the recommended values (see hydraulic fluid recommendations) flushing must be performed or ISO oil grade must be changed. The working temperature must not overcome 70 °C.

The data specified into the catalogue are for product description purpose only and must not be interpreted as warranted characteristics in legal sense. ItalgrouP S.r.l. reserves the right to implement modifications without notice. All partial or total reproduction and copy without written authorization of ItalgrouP S.r.l. is strictly forbidden.

IAMD H7 - PERFORMANCE DIAGRAMS

5400 cc

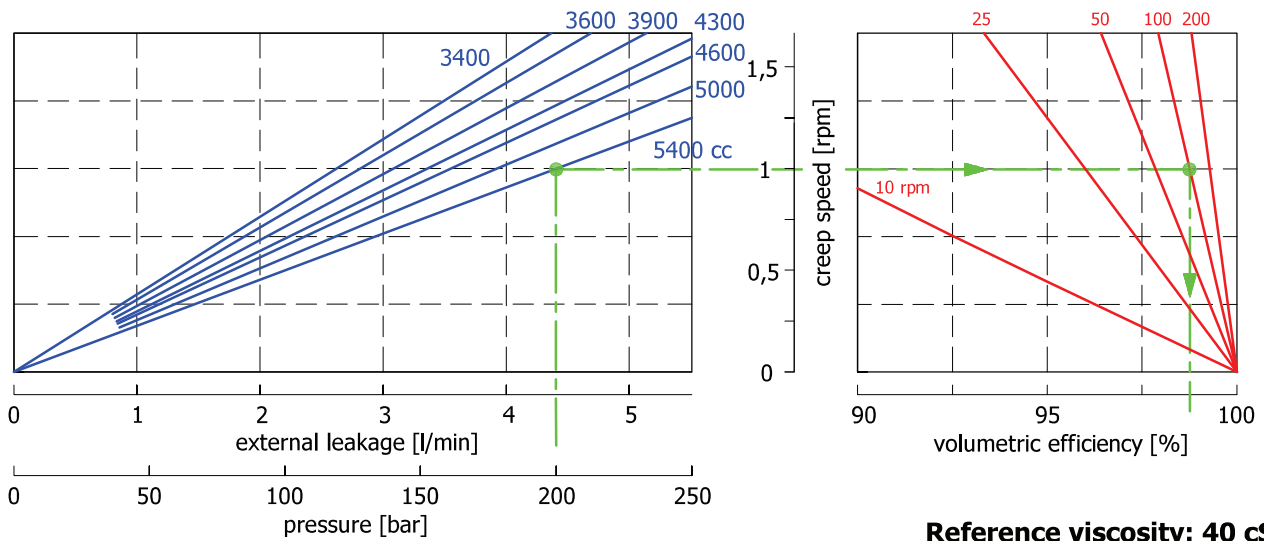


- Continuous operation
- Continuous operation with flushing or intermittent operation (see below for intermittent operation)
- Intermittent operation: permitted for a 15% of duty cycle, for 3 minutes maximum period
- Peak operation: permitted for very short periods (3-5 seconds every 10-15 minutes)

The above diagrams are referring to the hydraulic motor working with a fluid in ideal conditions (viscosity at 40 cSt). In case the working temperature increases and viscosity reach values under the recommended values (see hydraulic fluid recommendations) flushing must be performed or ISO oil grade must be changed. The working temperature must not overcome 70 °C.

The data specified into the catalogue are for product description purpose only and must not be interpreted as warranted characteristics in legal sense. ItalgrouP S.r.l. reserves the right to implement modifications without notice. All partial or total reproduction and copy without written authorization of ItalgrouP S.r.l. is strictly forbidden.

CREEP SPEED - VOLUMETRIC EFFICIENCY

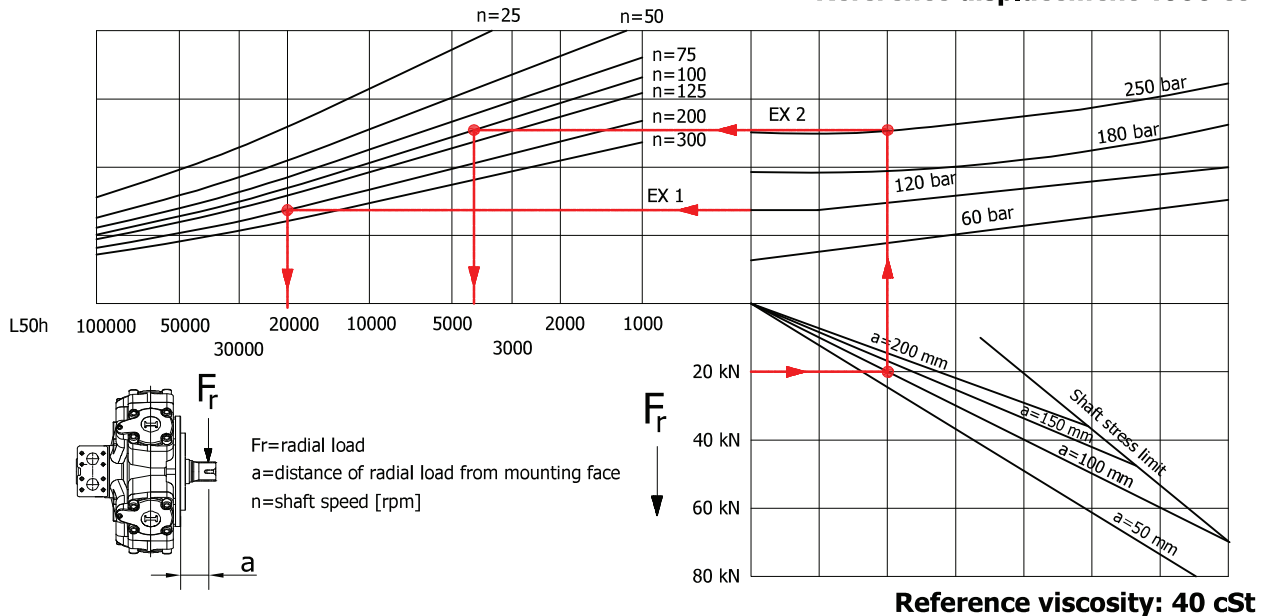


Example:

We suppose (5400 cc): $p=200$ [bar], we obtain: external leakage 4,3 [l/min], shaft creep speed 1 [rpm].
If we suppose (5400 cc): $p=200$ [bar] and $n=100$ [rpm] we obtain a volumetric efficiency of 98,5%;

BEARING LIFE

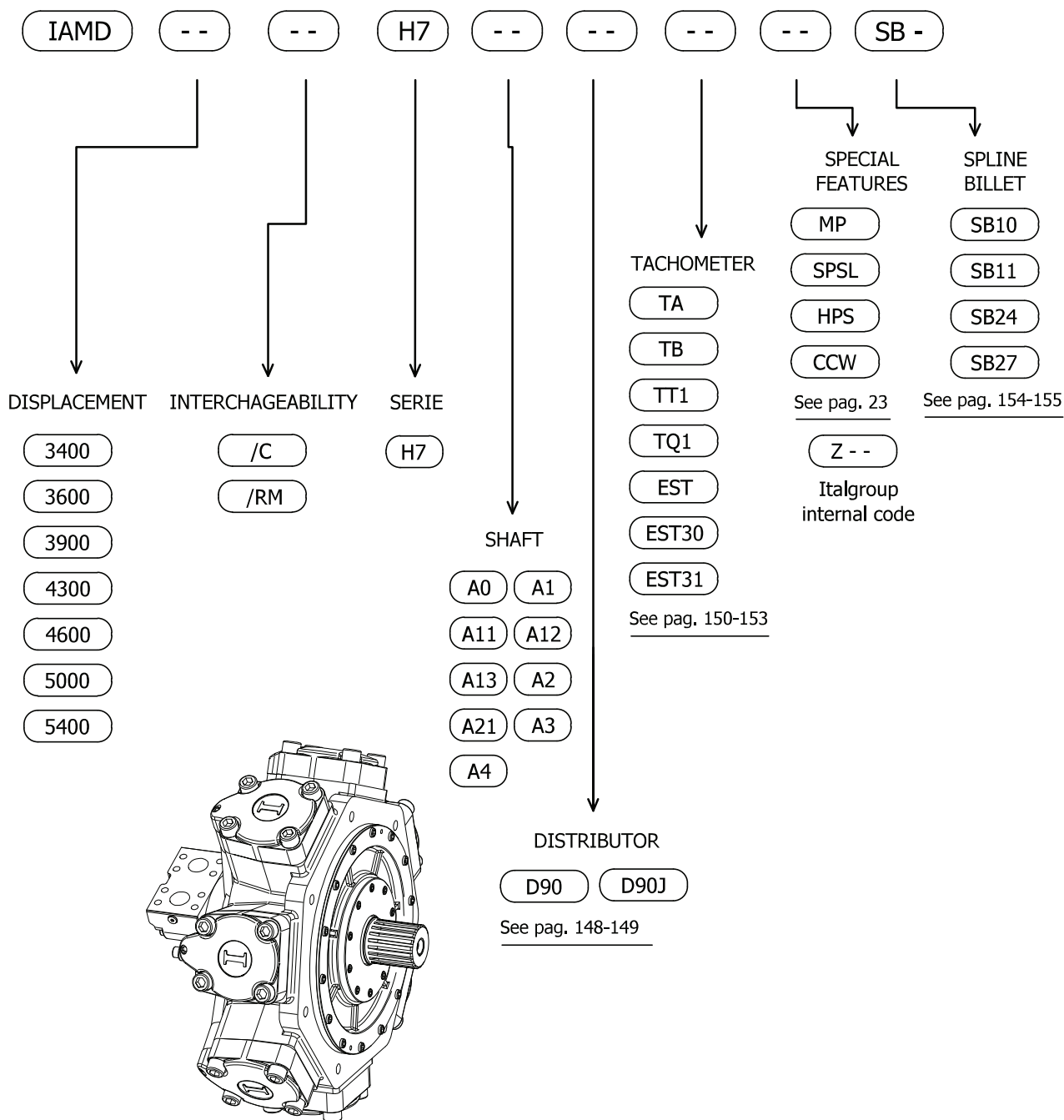
Reference displacement 4600 cc



Example:

We suppose (EX1): $p=120$ [bar], $n=200$ [rpm]; we obtain an average lifetime of 20000 [h].
If we suppose (EX2): $F_r=20$ [kN], $a=100$ [mm], $n=100$ [rpm] and $p=250$ [bar] we obtain an average life-time of 4000 [h].

IAMD H7 - ORDERING CODE



EXAMPLES:

IAMD 4600 H7 A1 D90J EST31 MP

IAMD 5400/C H7 A0 D90 CCW

IAMD 4300 H7 A0 D90 SPSL