
ITALGROUP SRL

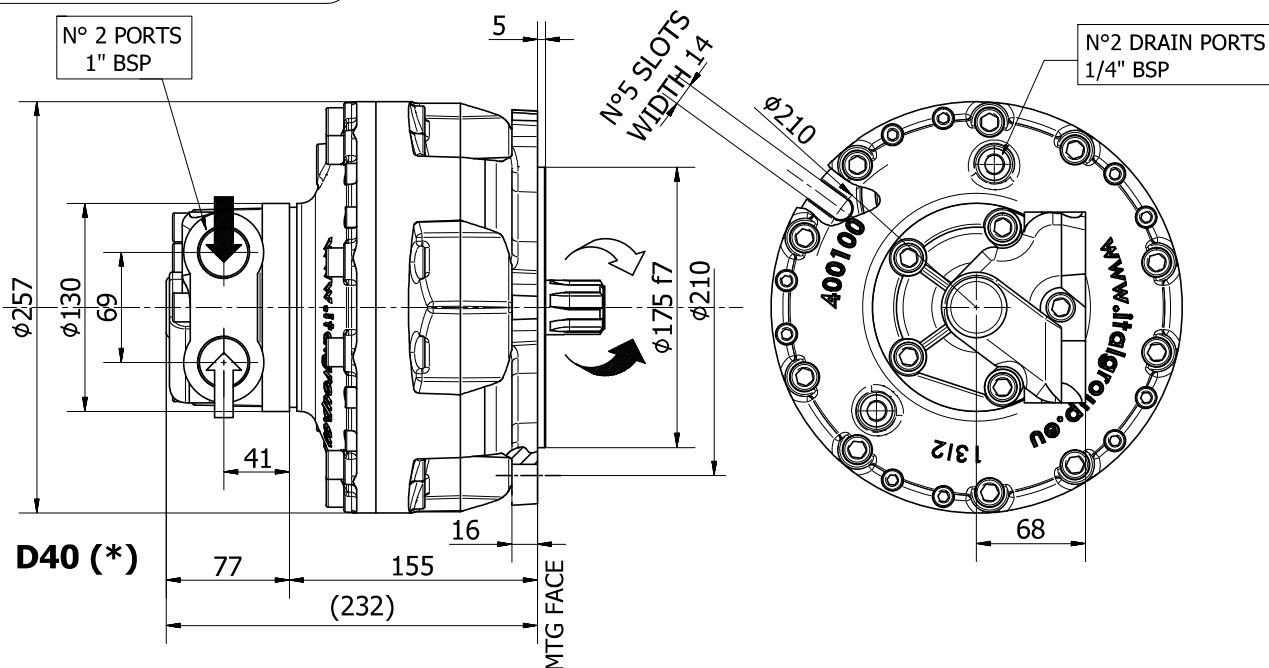
HC SERIES - HC1

GENERAL CATALOGUE

INDEX - HC1

<u>HC1 - INSTALLATION DRAWING</u>	Pag	38 - 39
<u>HC1/C190 - INSTALLATION DRAWING</u>	"	40 - 41
<u>HC1 - PERFORMANCE DIAGRAMS</u>	"	42 - 46
<u>ORDERING CODE</u>	"	47

INSTALLATION DRAWING



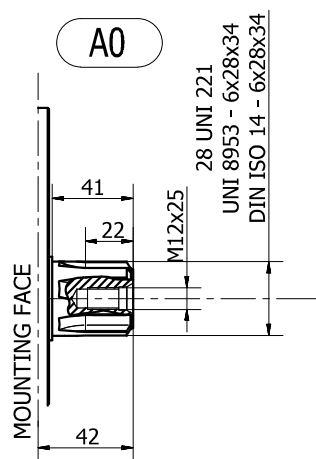
TECHNICAL DATA

		100	150	175	200	220	250	300	330
DISPLACEMENT	[cc]	98	154	173	200	221	243	289	315
SPECIFIC TORQUE	[Nm/bar]	1,57	2,45	2,74	3,20	3,52	3,88	4,61	5,01
MAX. CONT. PRESSURE	[bar]	250	250	250	250	250	250	250	250
HYDROSTATIC TEST PRESSURE	[bar]	420	420	420	420	420	420	420	420
MAX. CONT. SPEED	[rpm]	1100	700	700	600	600	600	550	450
PEAK SPEED (***)	[rpm]	1250	1000	1000	900	800	800	700	650
MAX. CONT. POWER (****)	[kW]	40	40	45	45	48	50	50	50
MAX. CONT. POWER WITH FLUSHING	[kW]	60	60	75	75	75	75	75	75
MAX. CASE PRESSURE	[bar]	6	6	6	6	6	6	6	6
DRY WEIGHT	[kg]	35	35	35	35	35	35	35	35
TEMPERATURE RANGE (**)	[°C]	-30÷70	-30÷70	-30÷70	-30÷70	-30÷70	-30÷70	-30÷70	-30÷70

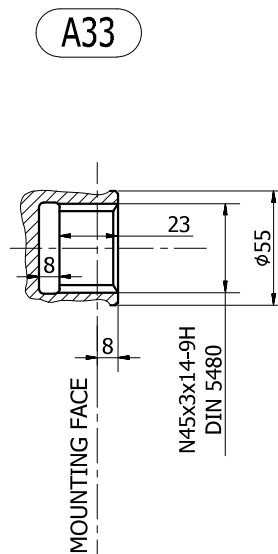
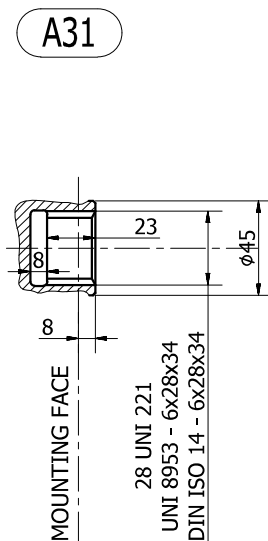
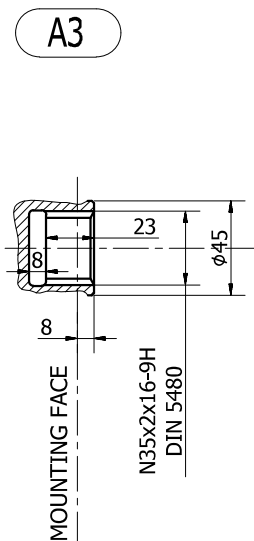
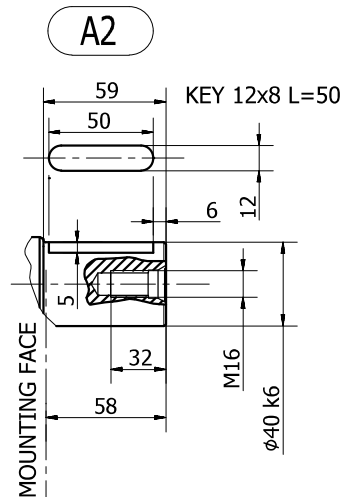
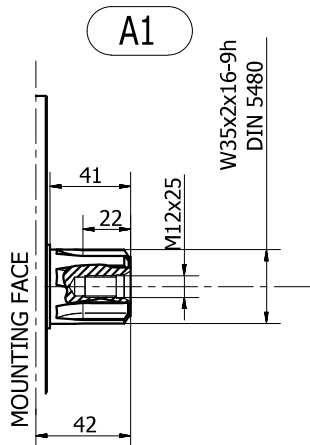
- (*) The standard distributor (D40) is shown. Please refer to distributors section (pag. 82-83) for different distributor interfaces.
- (**) Please refer to the hydraulic fluid recommendations (pag. 8-9).
- (***) Do not exceed maximum continuous power with flushing (pag. 11).
- (****) For motor operation with a continuous duty cycle at maximum continuous power the flushing is usually required. For more information please contact our technical department.

The data specified into the catalogue are for product description purpose only and must not be interpreted as warranted characteristics in legal sense. Italgrou S.r.l. reserves the right to implement modifications without notice. All partial or total reproduction and copy without written authorization of Italgrou S.r.l. is strictly forbidden.

SHAFT CONFIGURATIONS

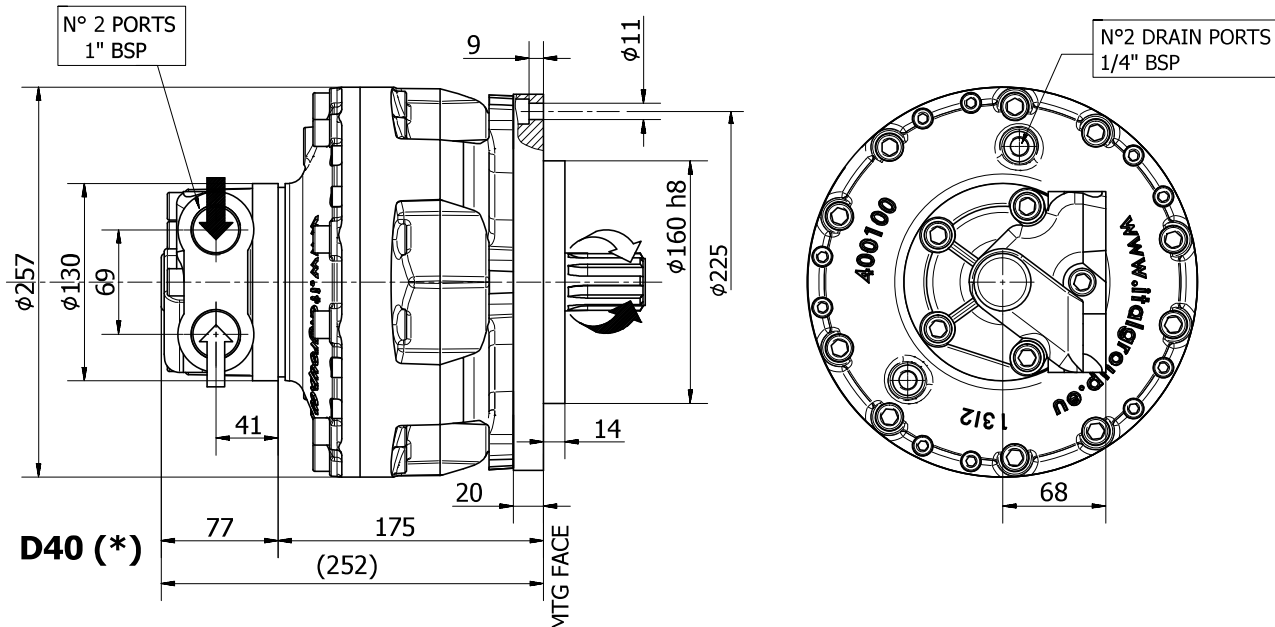


Available spline billet: (SB14)



The data specified into the catalogue are for product description purpose only and must not be interpreted as warranted characteristics in legal sense. Italgroup S.r.l. reserves the right to implement modifications without notice. All partial or total reproduction and copy without written authorization of Italgroup S.r.l. is strictly forbidden.

INSTALLATION DRAWING



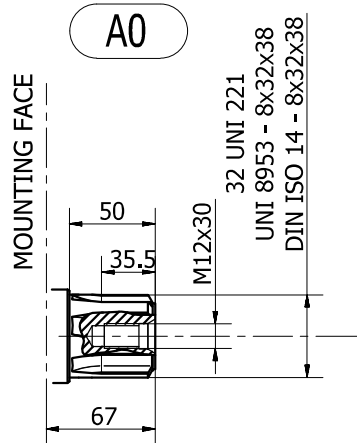
TECHNICAL DATA

		100	150	175	200	220	250	300	330
DISPLACEMENT	[cc]	98	154	173	200	221	243	289	315
SPECIFIC TORQUE	[Nm/bar]	1,57	2,45	2,74	3,20	3,52	3,88	4,61	5,01
MAX. CONT. PRESSURE	[bar]	250	250	250	250	250	250	250	250
HYDROSTATIC TEST PRESSURE	[bar]	420	420	420	420	420	420	420	420
MAX. CONT. SPEED	[rpm]	1100	700	700	600	600	600	550	450
PEAK SPEED (***)	[rpm]	1250	1000	1000	900	800	800	700	650
MAX. CONT. POWER (****)	[kW]	40	40	45	45	48	50	50	50
MAX. CONT. POWER WITH FLUSHING	[kW]	60	60	75	75	75	75	75	75
MAX. CASE PRESSURE	[bar]	6	6	6	6	6	6	6	6
DRY WEIGHT	[kg]	35	35	35	35	35	35	35	35
TEMPERATURE RANGE (**)	[°C]	-30÷70	-30÷70	-30÷70	-30÷70	-30÷70	-30÷70	-30÷70	-30÷70

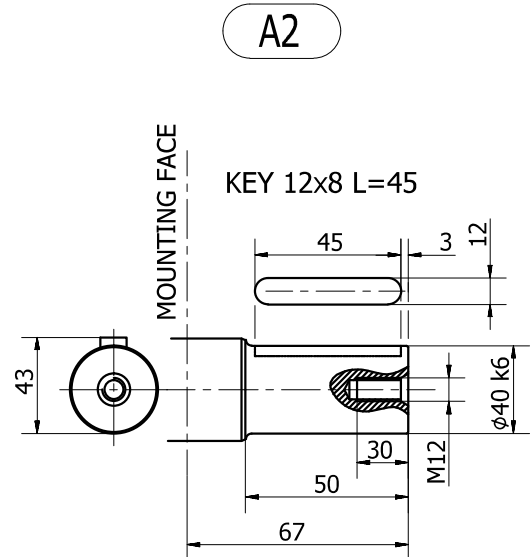
- (*) The standard distributor (D40) is shown. Please refer to distributors section (pag. 82-83) for different distributor interfaces.
- (**) Please refer to the hydraulic fluid recommendations (pag. 8-9).
- (***) Do not exceed maximum continuous power with flushing (pag. 11).
- (****) For motor operation with a continuous duty cycle at maximum continuous power the flushing is usually required. For more information please contact our technical department.

The data specified into the catalogue are for product description purpose only and must not be interpreted as warranted characteristics in legal sense. Italgrou S.r.l. reserves the right to implement modifications without notice. All partial or total reproduction and copy without written authorization of Italgrou S.r.l. is strictly forbidden.

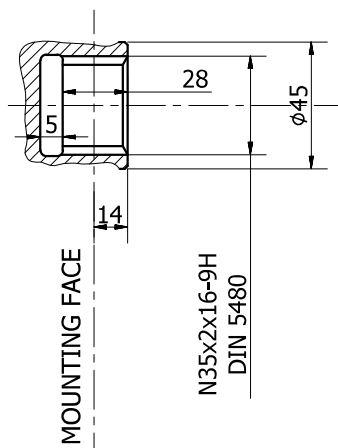
SHAFT CONFIGURATIONS



Available spline billet: **SB2**

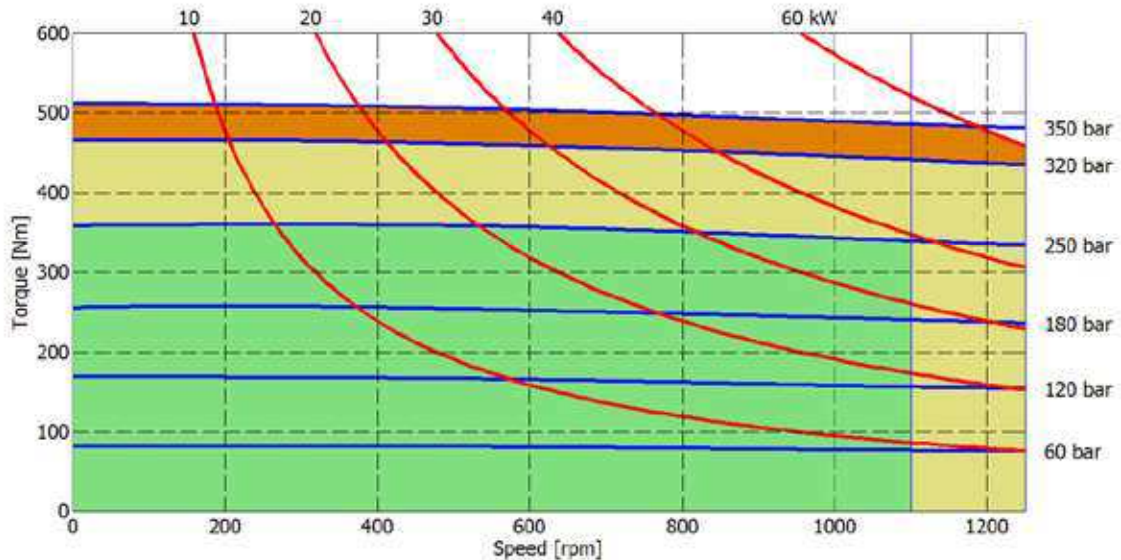


A3

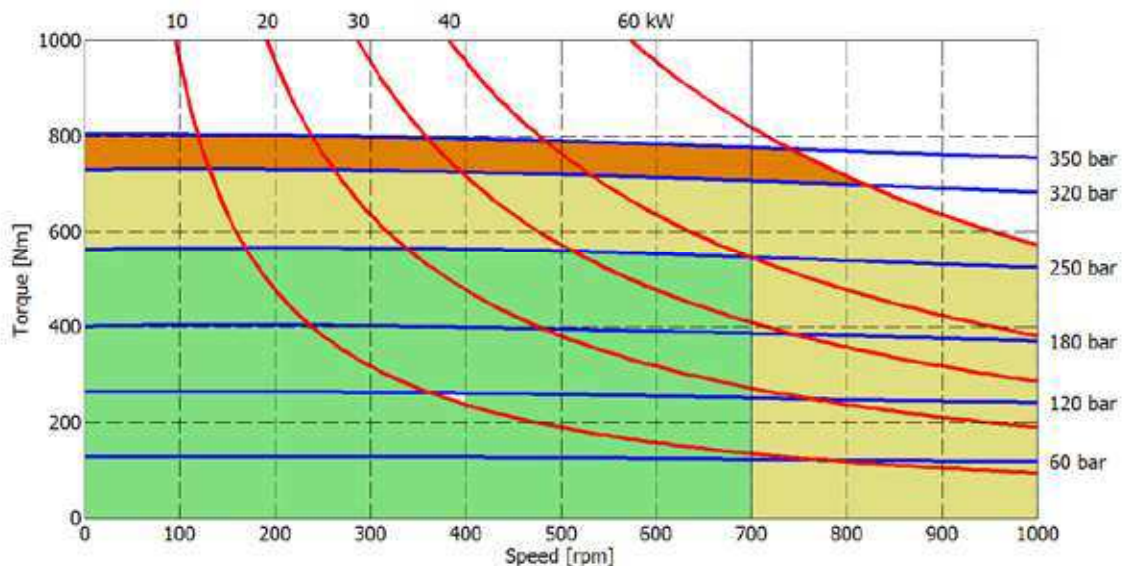


HC1- PERFORMANCE DIAGRAMS

100 cc



150 cc



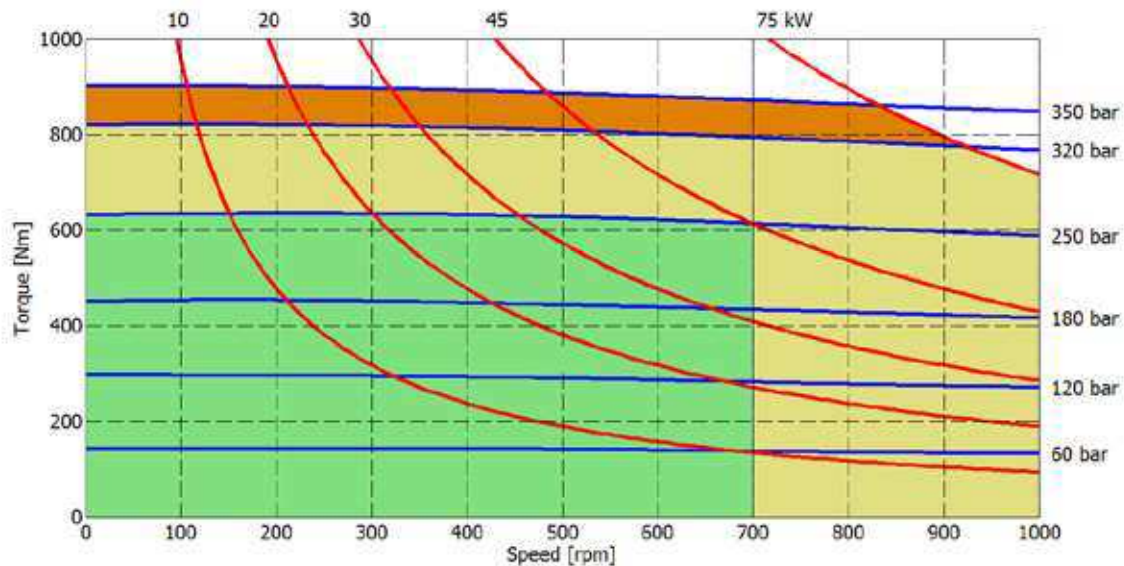
- Continuous operation
- Continuous operation with flushing or intermittent operation (see below for intermittent operation)
- Intermittent operation: permitted for a 15% of duty cycle, for 3 minutes maximum period
- Peak operation: permitted for very short periods (3-5 seconds every 10-15 minutes)

The above diagrams are referring to the hydraulic motor working with a fluid in ideal conditions (viscosity at 40 cSt). In case the working temperature increases and viscosity reach values under the recommended values (see hydraulic fluid recommendations) flushing must be performed or ISO oil grade must be changed. The working temperature must not overcome 70 °C.

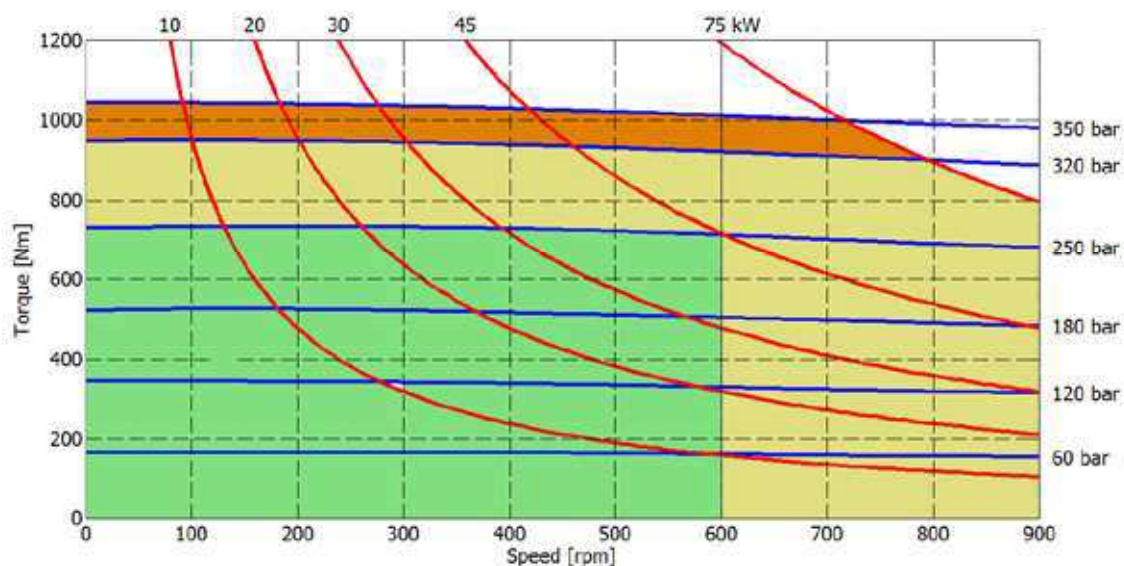
The data specified into the catalogue are for product description purpose only and must not be interpreted as warranted characteristics in legal sense. Italgrou S.r.l. reserves the right to implement modifications without notice. All partial or total reproduction and copy without written authorization of Italgrou S.r.l. is strictly forbidden.

HC1- PERFORMANCE DIAGRAMS

175 cc



200 cc



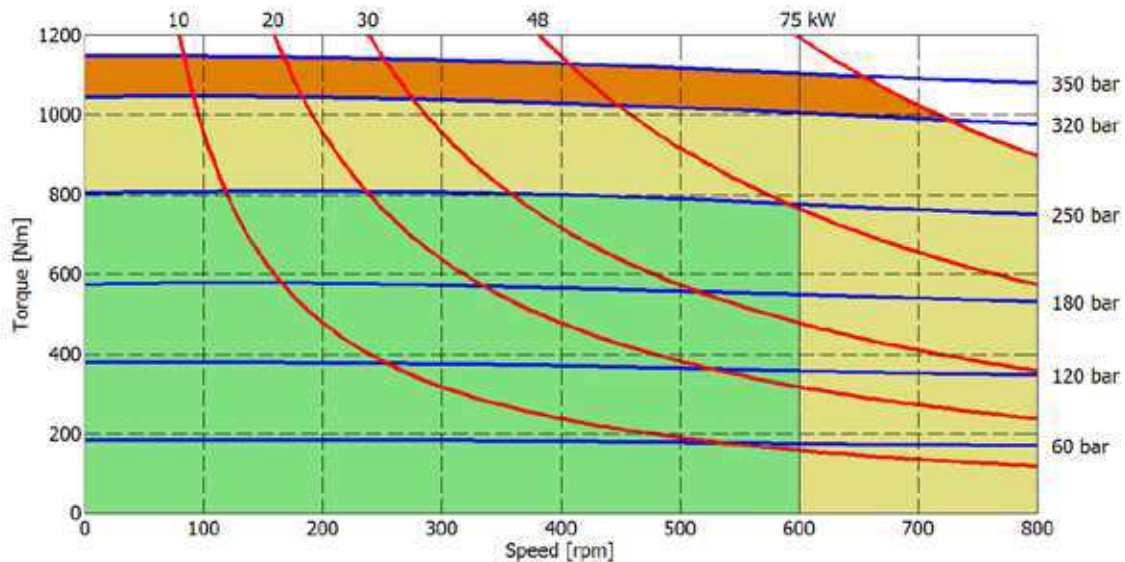
- Continuous operation
- Continuous operation with flushing or intermittent operation (see below for intermittent operation)
- Intermittent operation: permitted for a 15% of duty cycle, for 3 minutes maximum period
- Peak operation: permitted for very short periods (3-5 seconds every 10-15 minutes)

The above diagrams are referring to the hydraulic motor working with a fluid in ideal conditions (viscosity at 40 cSt). In case the working temperature increases and viscosity reach values under the recommended values (see hydraulic fluid recommendations) flushing must be performed or ISO oil grade must be changed. The working temperature must not overcome 70 °C.

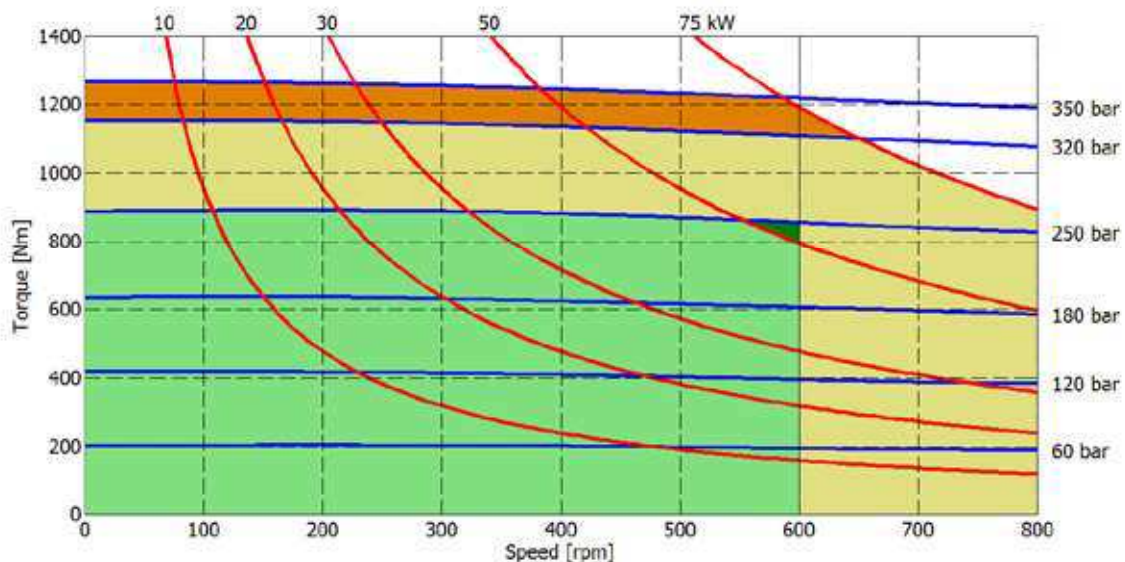
The data specified into the catalogue are for product description purpose only and must not be interpreted as warranted characteristics in legal sense. ItalgrouP S.r.l. reserves the right to implement modifications without notice. All partial or total reproduction and copy without written authorization of ItalgrouP S.r.l. is strictly forbidden.

HC1- PERFORMANCE DIAGRAMS

220 cc



250 cc



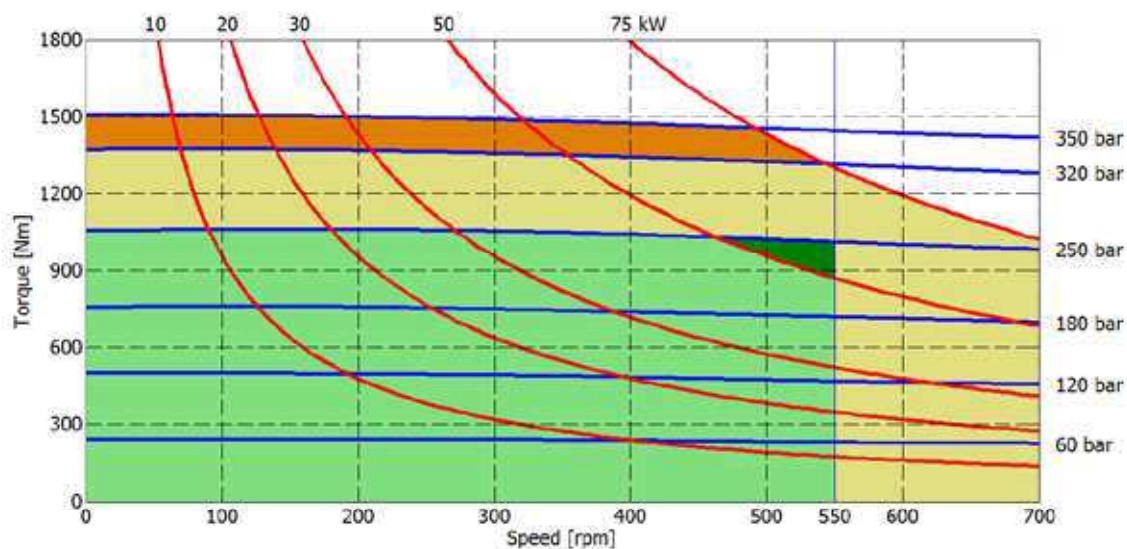
- Continuous operation
- Continuous operation with flushing or intermittent operation (see below for intermittent operation)
- Intermittent operation: permitted for a 15% of duty cycle, for 3 minutes maximum period
- Peak operation: permitted for very short periods (3-5 seconds every 10-15 minutes)

The above diagrams are referring to the hydraulic motor working with a fluid in ideal conditions (viscosity at 40 cSt). In case the working temperature increases and viscosity reach values under the recommended values (see hydraulic fluid recommendations) flushing must be performed or ISO oil grade must be changed. The working temperature must not overcome 70 °C.

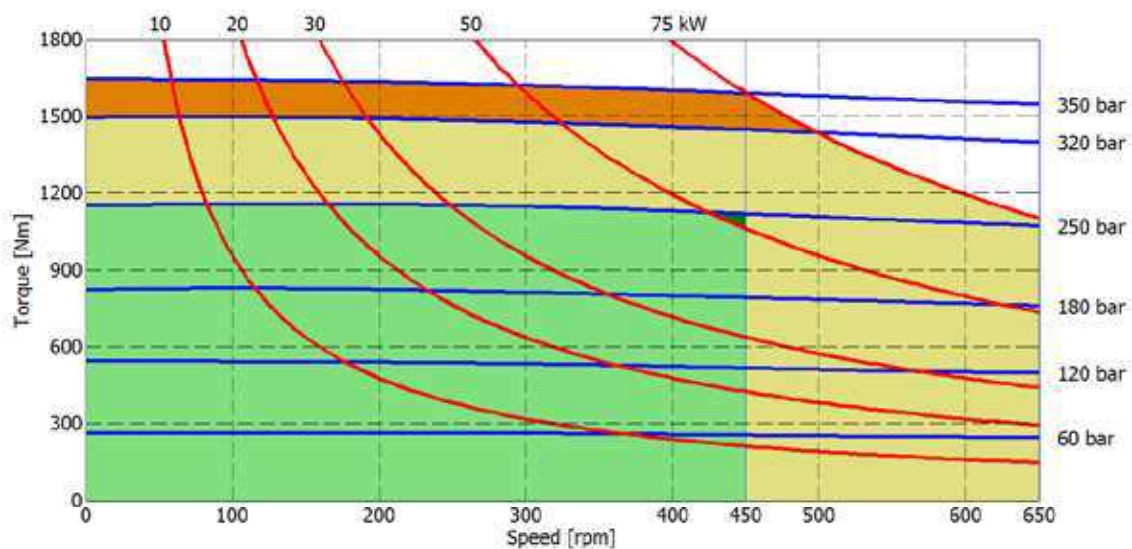
The data specified into the catalogue are for product description purpose only and must not be interpreted as warranted characteristics in legal sense. Italgrou S.r.l. reserves the right to implement modifications without notice. All partial or total reproduction and copy without written authorization of Italgrou S.r.l. is strictly forbidden.

HC1- PERFORMANCE DIAGRAMS

300 cc



330 cc

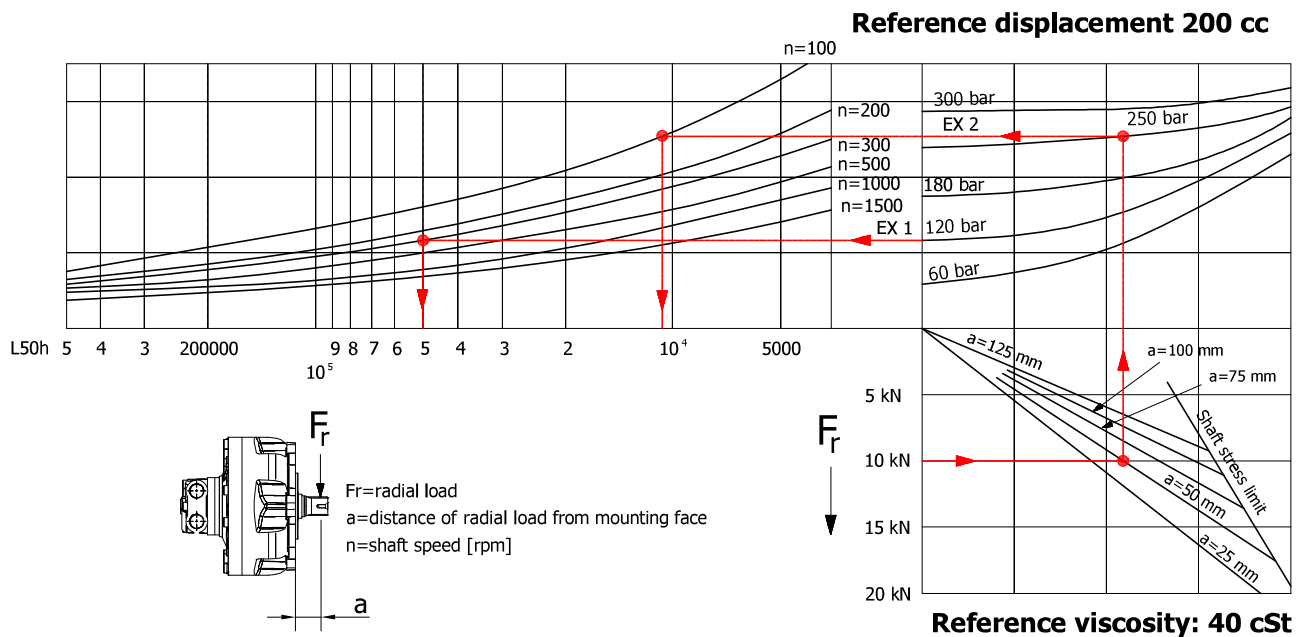


- Continuous operation
- Continuous operation with flushing or intermittent operation (see below for intermittent operation)
- Intermittent operation: permitted for a 15% of duty cycle, for 3 minutes maximum period
- Peak operation: permitted for very short periods (3-5 seconds every 10-15 minutes)

The above diagrams are referring to the hydraulic motor working with a fluid in ideal conditions (viscosity at 40 cSt). In case the working temperature increases and viscosity reach values under the recommended values (see hydraulic fluid recommendations) flushing must be performed or ISO oil grade must be changed. The working temperature must not overcome 70 °C.

The data specified into the catalogue are for product description purpose only and must not be interpreted as warranted characteristics in legal sense. Italgroup S.r.l. reserves the right to implement modifications without notice. All partial or total reproduction and copy without written authorization of Italgroup S.r.l. is strictly forbidden.

BEARING LIFE

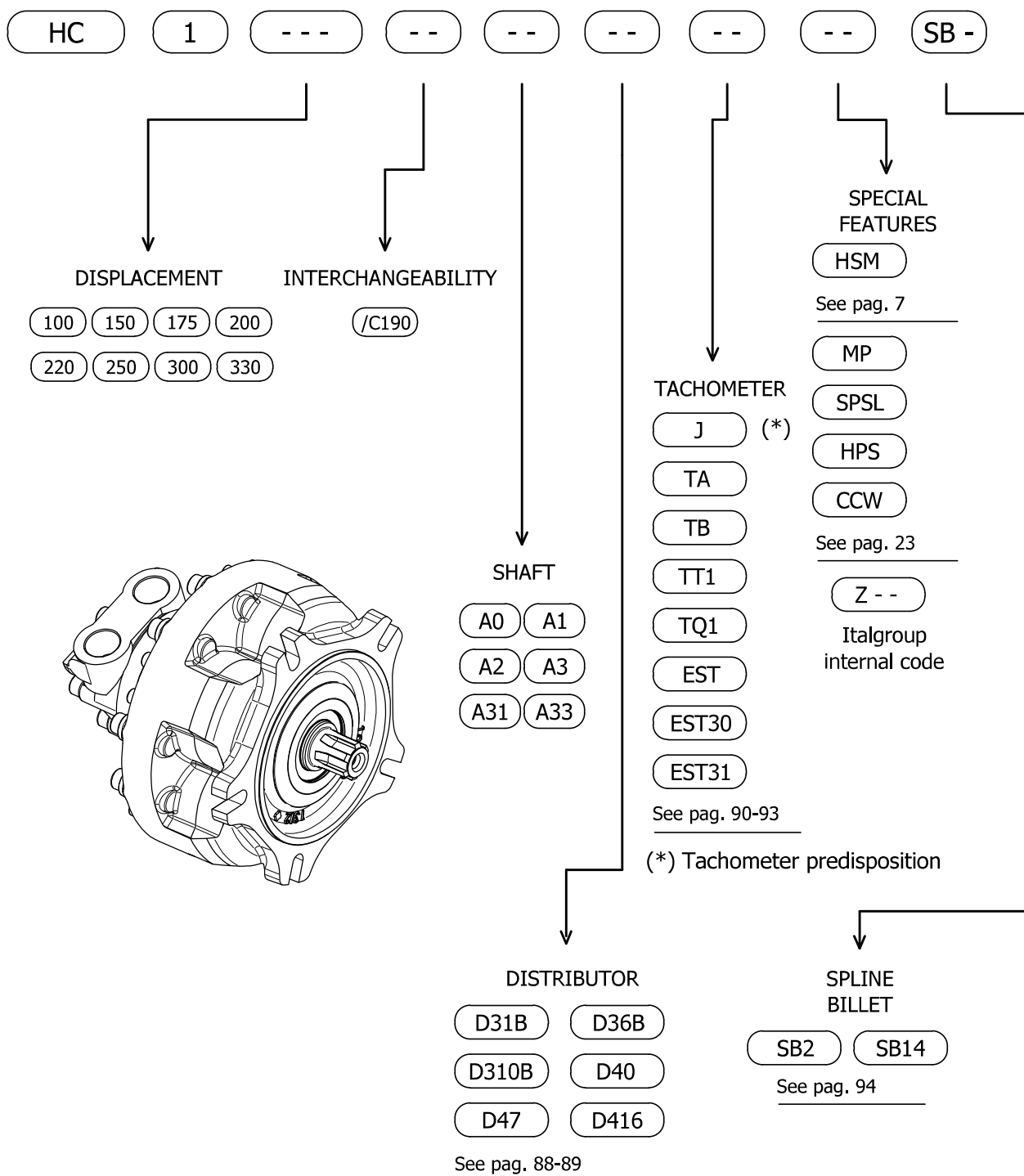


Example:

We suppose (EX1): $p=120$ [bar], $n=300$ [rpm]; we obtain an average lifetime of 50000 [h].

If we suppose (EX2): $F_r=10$ [kN], $a=50$ [mm], $n=100$ [rpm] and $p=250$ [bar] we obtain an average lifetime of 10500 [h].

HC1- ORDERING CODE



The data specified into the catalogue are for product description purpose only and must not be interpreted as warranted characteristics in legal sense. Italgroup S.r.l. reserves the right to implement modifications without notice. All partial or total reproduction and copy without written authorization of Italgroup S.r.l. is strictly forbidden.