
ITALGROUP SRL

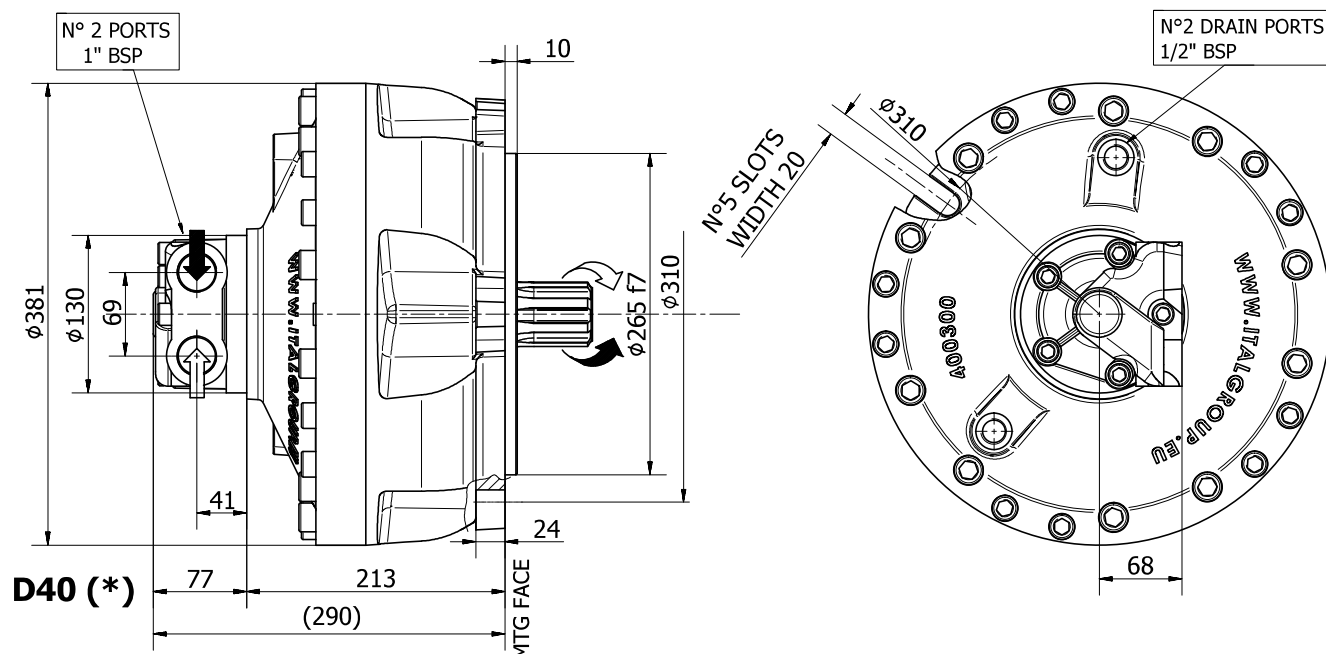
HC SERIES - HC3

GENERAL CATALOGUE

INDEX - HC3

<u>HC3 - INSTALLATION DRAWING</u>	Pag	64 - 65
<u>HC3/G2 - INSTALLATION DRAWING</u>	"	66 - 67
<u>HC3/G4 - INSTALLATION DRAWING</u>	"	68 - 69
<u>HC3 - PERFORMANCE DIAGRAMS</u>	"	70 - 74
<u>HC3 - ORDERING CODE</u>	"	75

INSTALLATION DRAWING



TECHNICAL DATA

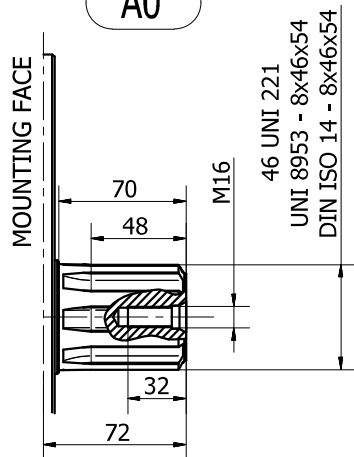
		350	400	500	600	700	800	900	1000
DISPLACEMENT	[cc]	352	426	486	595	689	792	872	988
SPECIFIC TORQUE	[Nm/bar]	5,60	6,78	7,73	9,47	11	12,6	13,9	15,7
MAX. CONT. PRESSURE	[bar]	250	250	250	250	250	250	250	250
HYDROSTATIC TEST PRESSURE	[bar]	420	420	420	420	420	420	420	420
MAX. CONT. SPEED	[rpm]	640	600	500	450	420	400	360	310
PEAK SPEED (***)	[rpm]	800	800	700	600	600	550	525	500
MAX. CONT. POWER (****)	[kW]	82	85	85	85	85	85	85	85
MAX. CONT. POWER WITH FLUSHING	[kW]	130	130	130	130	130	130	130	130
MAX. CASE PRESSURE	[bar]	6	6	6	6	6	6	6	6
DRY WEIGHT	[kg]	92	92	92	92	92	92	92	92
TEMPERATURE RANGE (**)	[°C]	-30÷70	-30÷70	-30÷70	-30÷70	-30÷70	-30÷70	-30÷70	-30÷70

- (*) The standard distributor (D40) is shown. Please refer to distributors section (pag. 82-83) for different distributor interfaces.
- (**) Please refer to the hydraulic fluid recommendations (pag. 8-9).
- (***) Do not exceed maximum continuous power with flushing (pag. 11).
- (****) For motor operation with a continuous duty cycle at maximum continuous power the flushing is usually required. For more information please contact our technical department.

The data specified into the catalogue are for product description purpose only and must not be interpreted as warranted characteristics in legal sense. Italgrou S.r.l. reserves the right to implement modifications without notice. All partial or total reproduction and copy without written authorization of Italgrou S.r.l. is strictly forbidden.

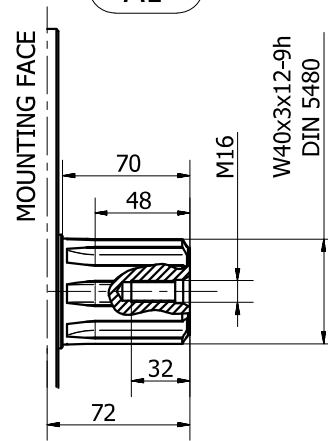
SHAFT CONFIGURATIONS

A0



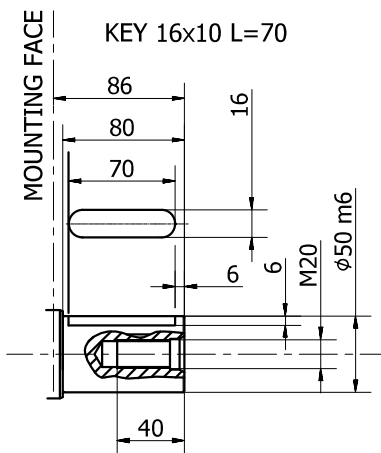
Available spline billet: **SB5**

A1

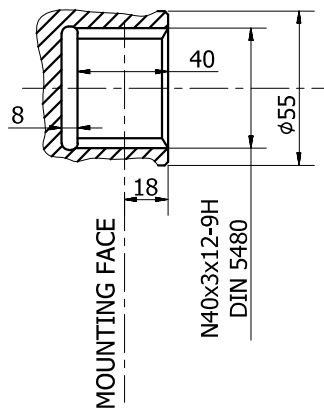


Available spline billet: **SB22**

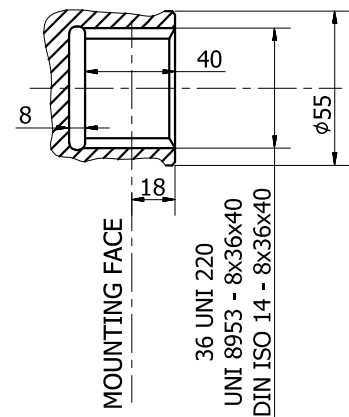
A2



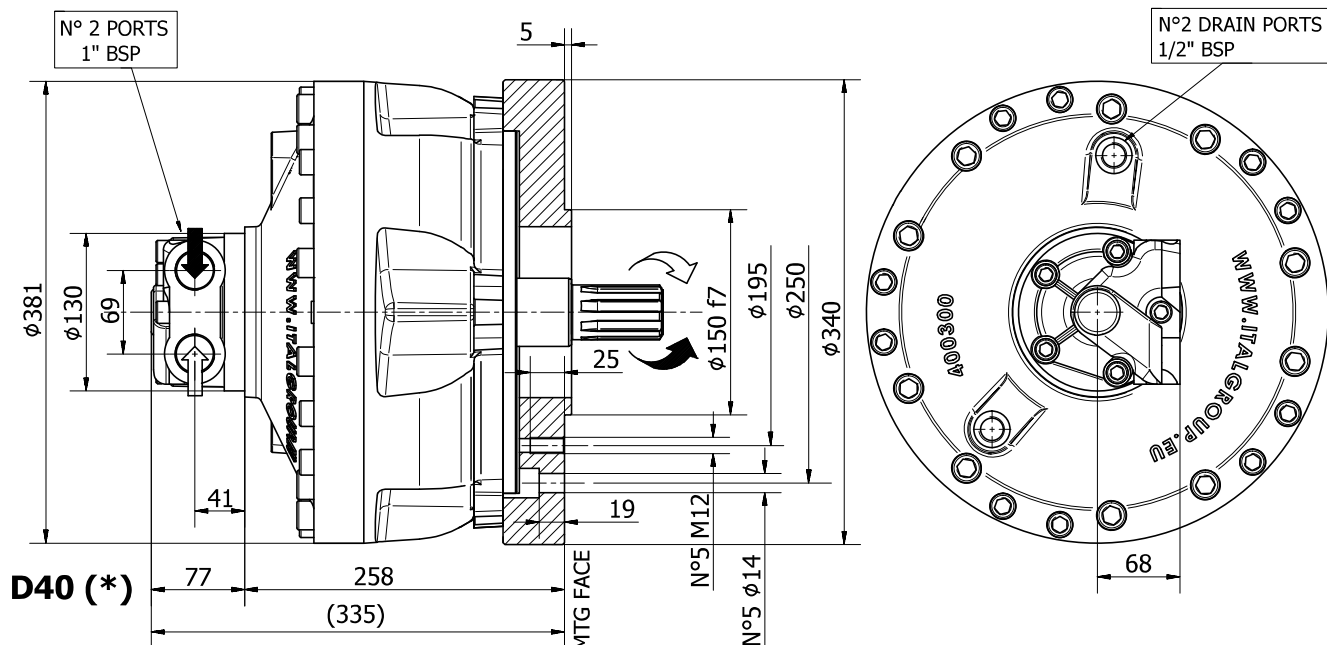
A3



A31



INSTALLATION DRAWING



TECHNICAL DATA

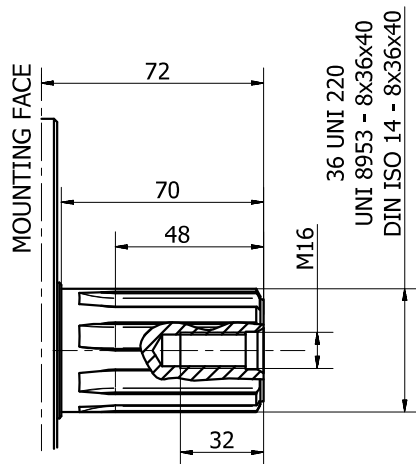
		350	400	500	600	700	800	900	1000
DISPLACEMENT	[cc]	352	426	486	595	689	792	872	988
SPECIFIC TORQUE	[Nm/bar]	5,60	6,78	7,73	9,47	11	12,6	13,9	15,7
MAX. CONT. PRESSURE	[bar]	250	250	250	250	250	250	250	250
HYDROSTATIC TEST PRESSURE	[bar]	420	420	420	420	420	420	420	420
MAX. CONT. SPEED	[rpm]	640	600	500	450	420	400	360	310
PEAK SPEED (***)	[rpm]	800	800	700	600	600	550	525	500
MAX. CONT. POWER (****)	[kW]	85	85	85	85	85	85	85	85
MAX. CONT. POWER WITH FLUSHING	[kW]	130	130	130	130	130	130	130	130
MAX. CASE PRESSURE	[bar]	6	6	6	6	6	6	6	6
DRY WEIGHT	[kg]	92	92	92	92	92	92	92	92
TEMPERATURE RANGE (**)	[°C]	-30÷70	-30÷70	-30÷70	-30÷70	-30÷70	-30÷70	-30÷70	-30÷70

- (*) The standard distributor (D40) is shown. Please refer to distributors section (pag. 82-83) for different distributor interfaces.
- (**) Please refer to the hydraulic fluid recommendations (pag. 8-9).
- (***) Do not exceed maximum continuous power with flushing (pag. 11).
- (****) For motor operation with a continuous duty cycle at maximum continuous power the flushing is usually required. For more information please contact our technical department.

The data specified into the catalogue are for product description purpose only and must not be interpreted as warranted characteristics in legal sense. Italgrou S.r.l. reserves the right to implement modifications without notice. All partial or total reproduction and copy without written authorization of Italgrou S.r.l. is strictly forbidden.

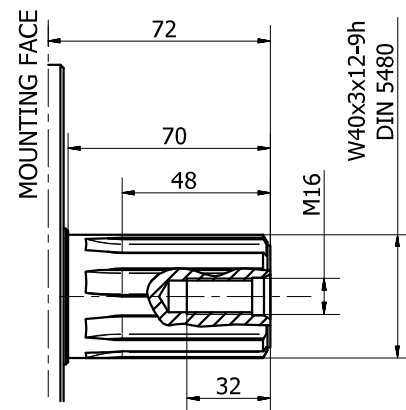
SHAFT CONFIGURATIONS

A0



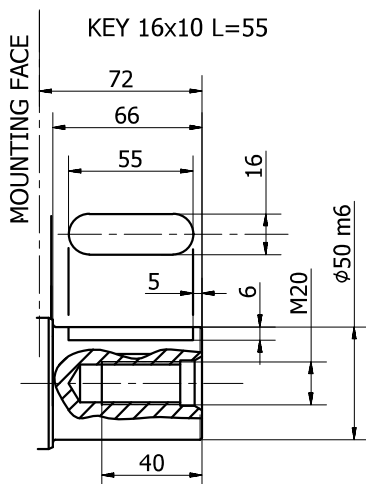
Available spline billet: **SB3**

A1

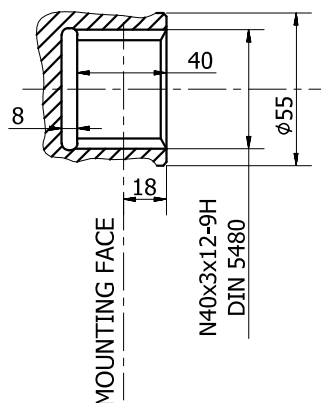


Available spline billet: **SB22**

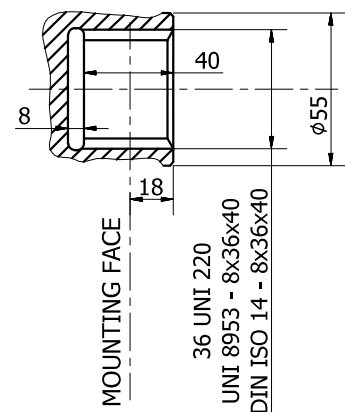
A2



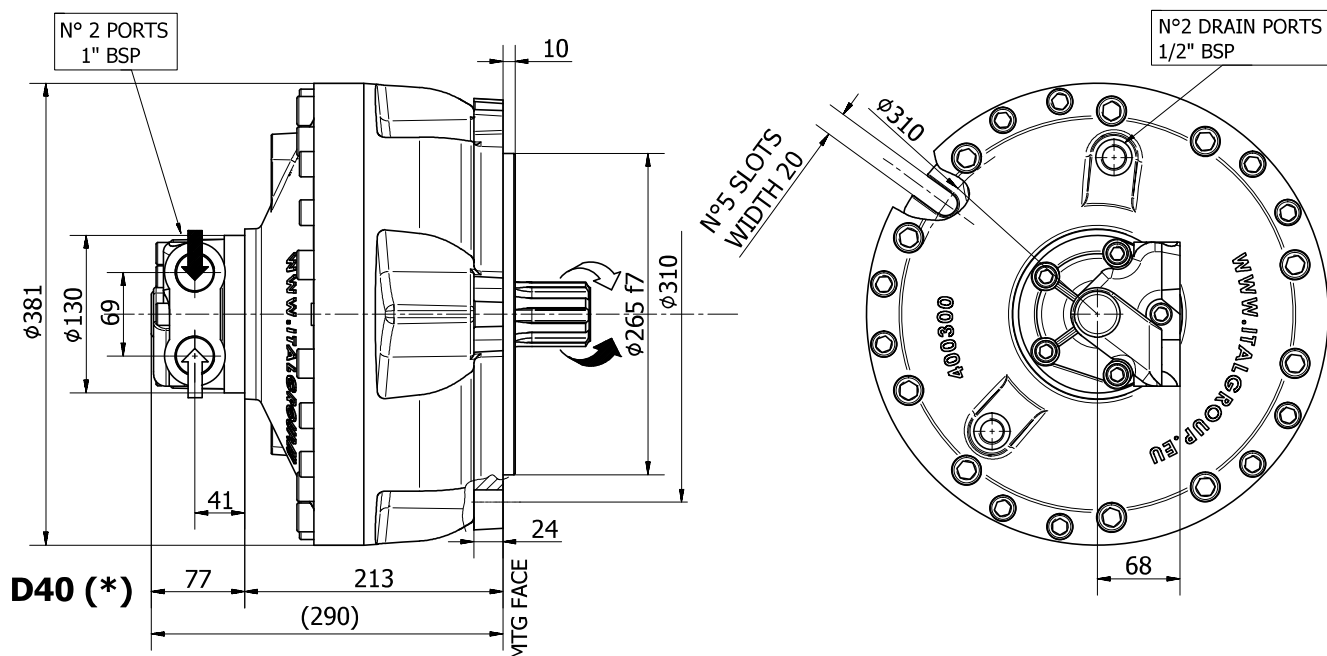
A3



A31



INSTALLATION DRAWING



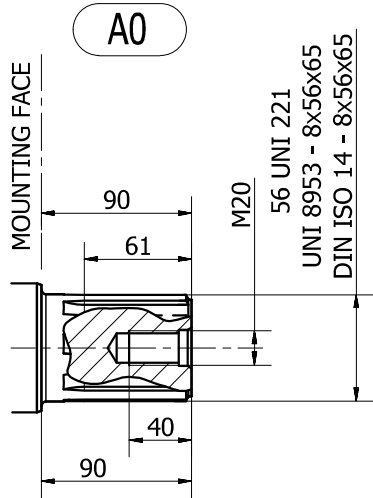
TECHNICAL DATA

		350	400	500	600	700	800	900	1000
DISPLACEMENT	[cc]	352	426	486	595	689	792	872	988
SPECIFIC TORQUE	[Nm/bar]	5,60	6,78	7,73	9,47	11	12,6	13,9	15,7
MAX. CONT. PRESSURE	[bar]	250	250	250	250	250	250	250	250
HYDROSTATIC TEST PRESSURE	[bar]	420	420	420	420	420	420	420	420
MAX. CONT. SPEED	[rpm]	640	600	500	450	420	400	360	310
PEAK SPEED (***)	[rpm]	800	800	700	600	600	550	525	500
MAX. CONT. POWER (****)	[kW]	85	85	85	85	85	85	85	85
MAX. CONT. POWER WITH FLUSHING	[kW]	130	130	130	130	130	130	130	130
MAX. CASE PRESSURE	[bar]	6	6	6	6	6	6	6	6
DRY WEIGHT	[kg]	92	92	92	92	92	92	92	92
TEMPERATURE RANGE (**)	[°C]	-30÷70	-30÷70	-30÷70	-30÷70	-30÷70	-30÷70	-30÷70	-30÷70

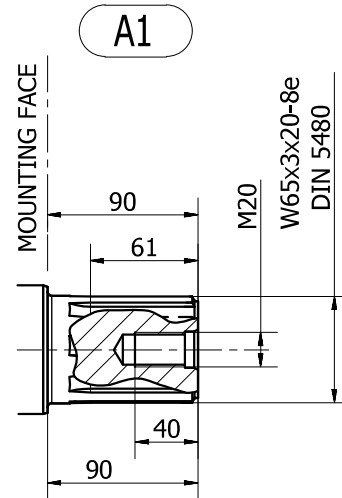
- (*) The standard distributor (D40) is shown. Please refer to distributors section (pag. 82-83) for different distributor interfaces.
- (**) Please refer to the hydraulic fluid recommendations (pag. 8-9).
- (***) Do not exceed maximum continuous power with flushing (pag. 11).
- (****) For motor operation with a continuous duty cycle at maximum continuous power the flushing is usually required. For more information please contact our technical department.

The data specified into the catalogue are for product description purpose only and must not be interpreted as warranted characteristics in legal sense. Italgrou S.r.l. reserves the right to implement modifications without notice. All partial or total reproduction and copy without written authorization of Italgrou S.r.l. is strictly forbidden.

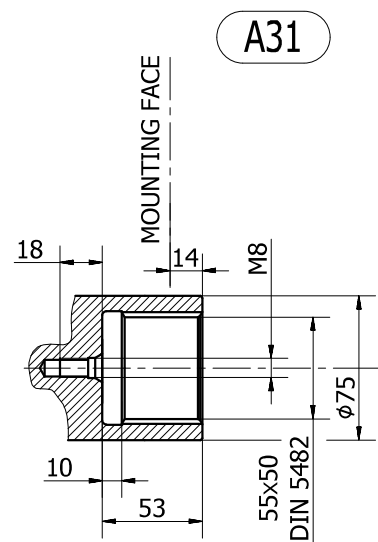
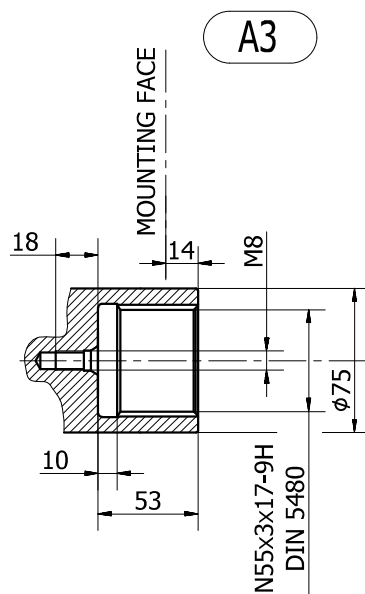
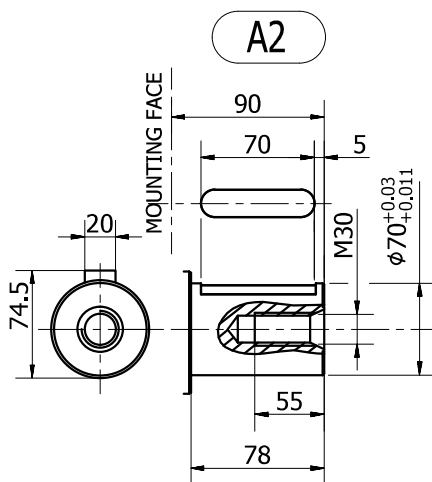
SHAFT CONFIGURATIONS



Available spline billet: (SB17)



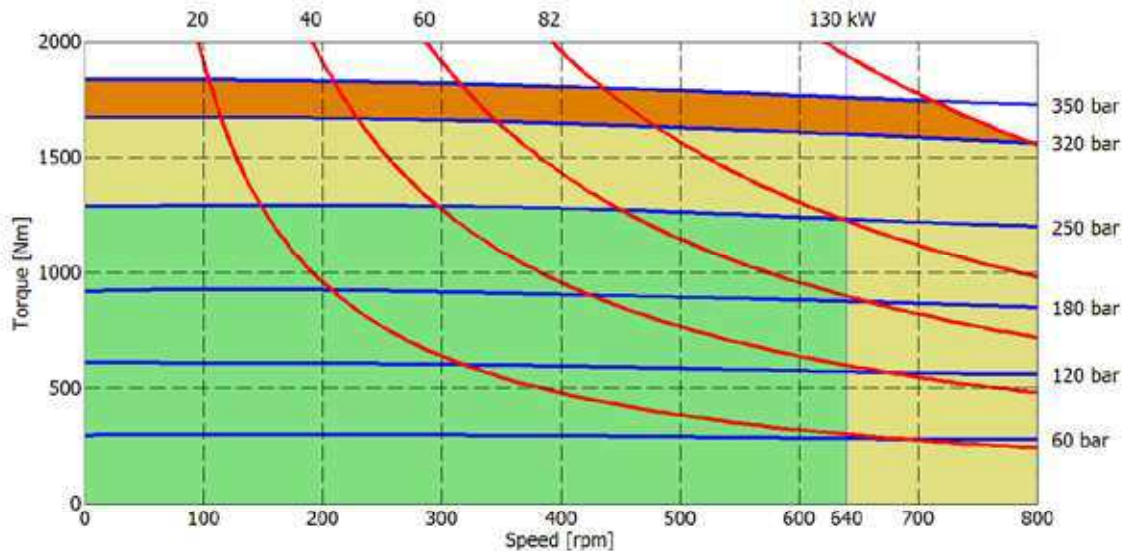
Available spline billet: (SB23)



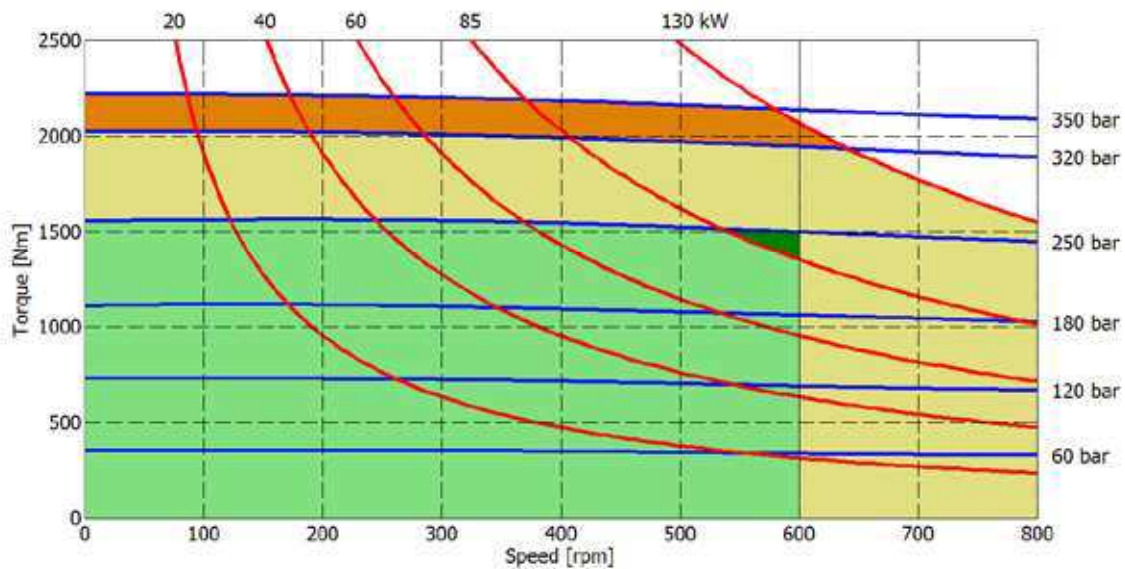
The data specified into the catalogue are for product description purpose only and must not be interpreted as warranted characteristics in legal sense. Italgroup S.r.l. reserves the right to implement modifications without notice. All partial or total reproduction and copy without written authorization of Italgroup S.r.l. is strictly forbidden.

HC3- PERFORMANCE DIAGRAMS

350 cc



400 cc



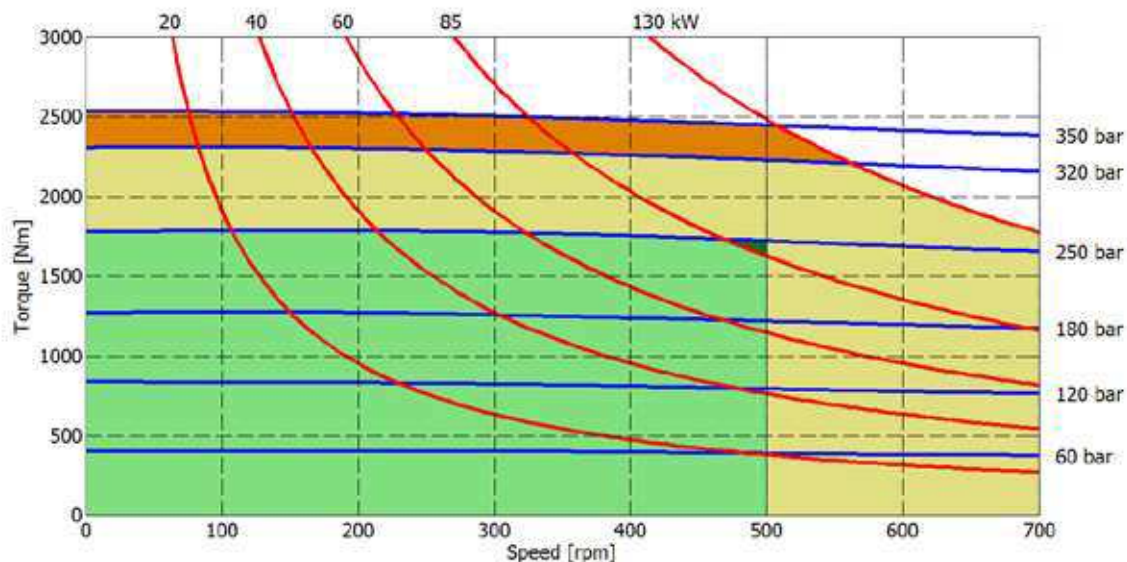
- Continuous operation
- Continuous operation with flushing or intermittent operation (see below for intermittent operation)
- Intermittent operation: permitted for a 15% of duty cycle, for 3 minutes maximum period
- Peak operation: permitted for very short periods (3-5 seconds every 10-15 minutes)

The above diagrams are referring to the hydraulic motor working with a fluid in ideal conditions (viscosity at 40 cSt). In case the working temperature increases and viscosity reach values under the recommended values (see hydraulic fluid recommendations) flushing must be performed or ISO oil grade must be changed. The working temperature must not overcome 70 °C.

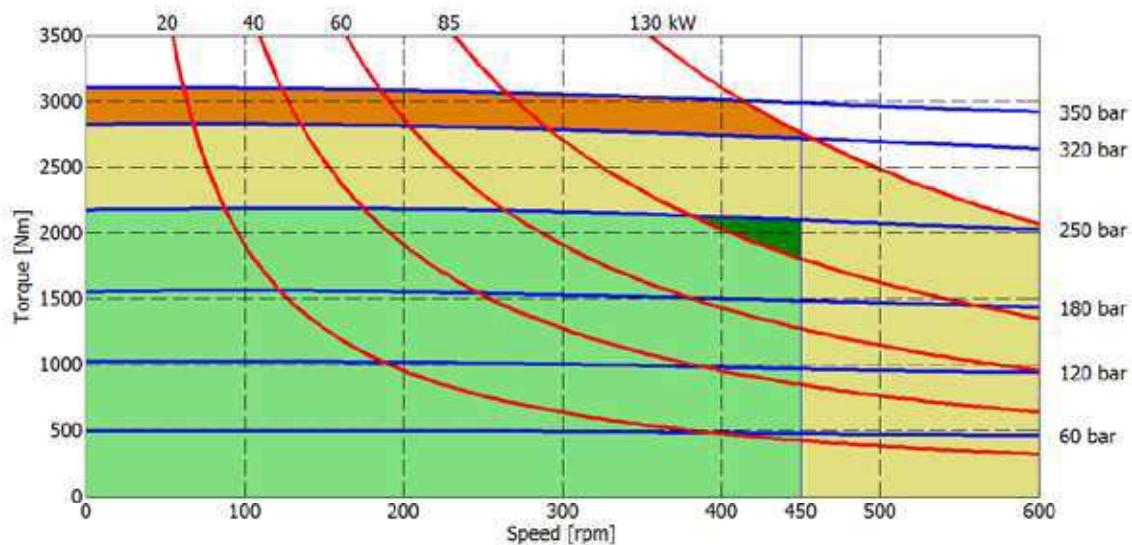
The data specified into the catalogue are for product description purpose only and must not be interpreted as warranted characteristics in legal sense. ItalgrouP S.r.l. reserves the right to implement modifications without notice. All partial or total reproduction and copy without written authorization of ItalgrouP S.r.l. is strictly forbidden.

HC3- PERFORMANCE DIAGRAMS

500 cc



600 cc



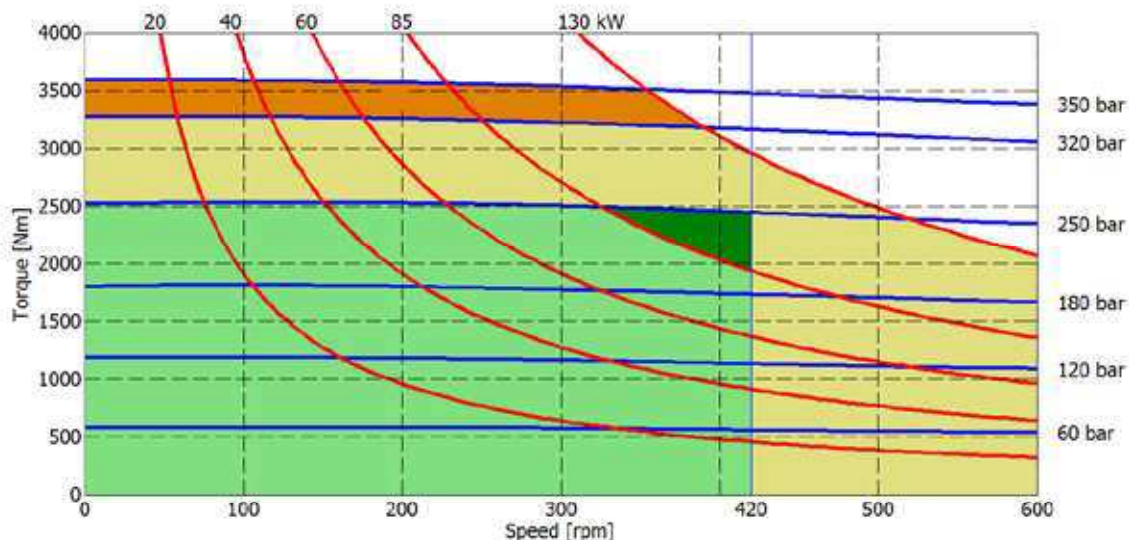
- Continuous operation
- Continuous operation with flushing or intermittent operation (see below for intermittent operation)
- Intermittent operation: permitted for a 15% of duty cycle, for 3 minutes maximum period
- Peak operation: permitted for very short periods (3-5 seconds every 10-15 minutes)

The above diagrams are referring to the hydraulic motor working with a fluid in ideal conditions (viscosity at 40 cSt). In case the working temperature increases and viscosity reach values under the recommended values (see hydraulic fluid recommendations) flushing must be performed or ISO oil grade must be changed. The working temperature must not overcome 70 °C.

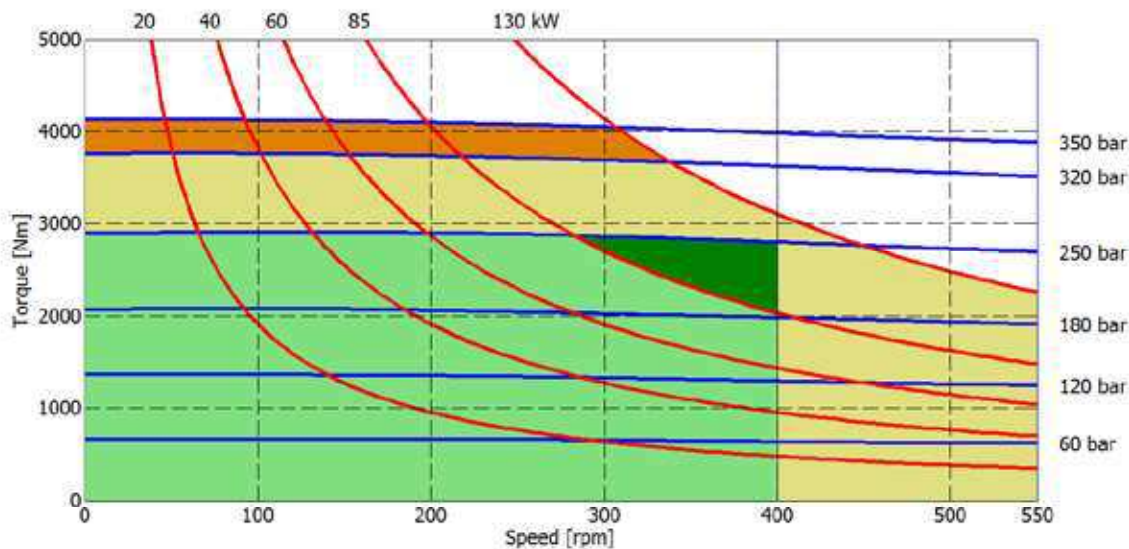
The data specified into the catalogue are for product description purpose only and must not be interpreted as warranted characteristics in legal sense. ItalgrouP S.r.l. reserves the right to implement modifications without notice. All partial or total reproduction and copy without written authorization of ItalgrouP S.r.l. is strictly forbidden.

HC3- PERFORMANCE DIAGRAMS

700 cc



800 cc



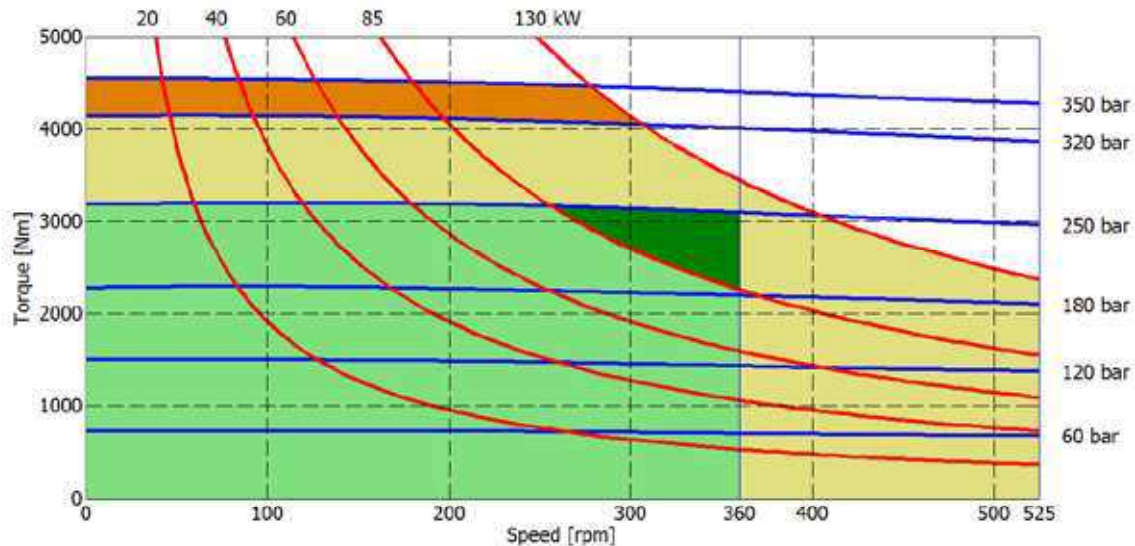
- Continuous operation
- Continuous operation with flushing or intermittent operation (see below for intermittent operation)
- Intermittent operation: permitted for a 15% of duty cycle, for 3 minutes maximum period
- Peak operation: permitted for very short periods (3-5 seconds every 10-15 minutes)

The above diagrams are referring to the hydraulic motor working with a fluid in ideal conditions (viscosity at 40 cSt). In case the working temperature increases and viscosity reach values under the recommended values (see hydraulic fluid recommendations) flushing must be performed or ISO oil grade must be changed. The working temperature must not overcome 70 °C.

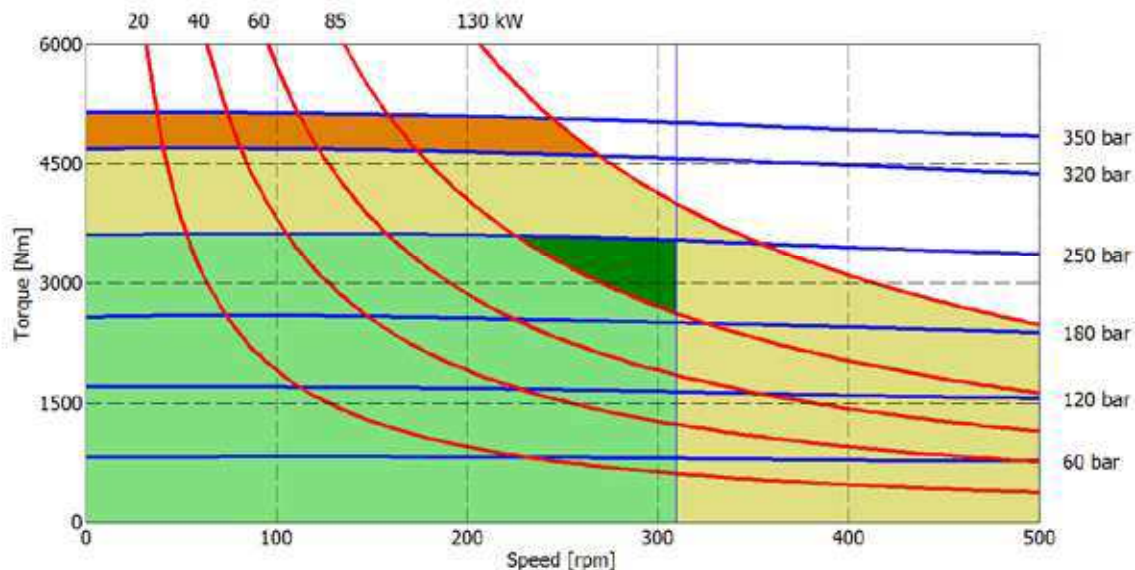
The data specified into the catalogue are for product description purpose only and must not be interpreted as warranted characteristics in legal sense. Italgrou S.r.l. reserves the right to implement modifications without notice. All partial or total reproduction and copy without written authorization of Italgrou S.r.l. is strictly forbidden.

HC3- PERFORMANCE DIAGRAMS

900 cc



1000 cc

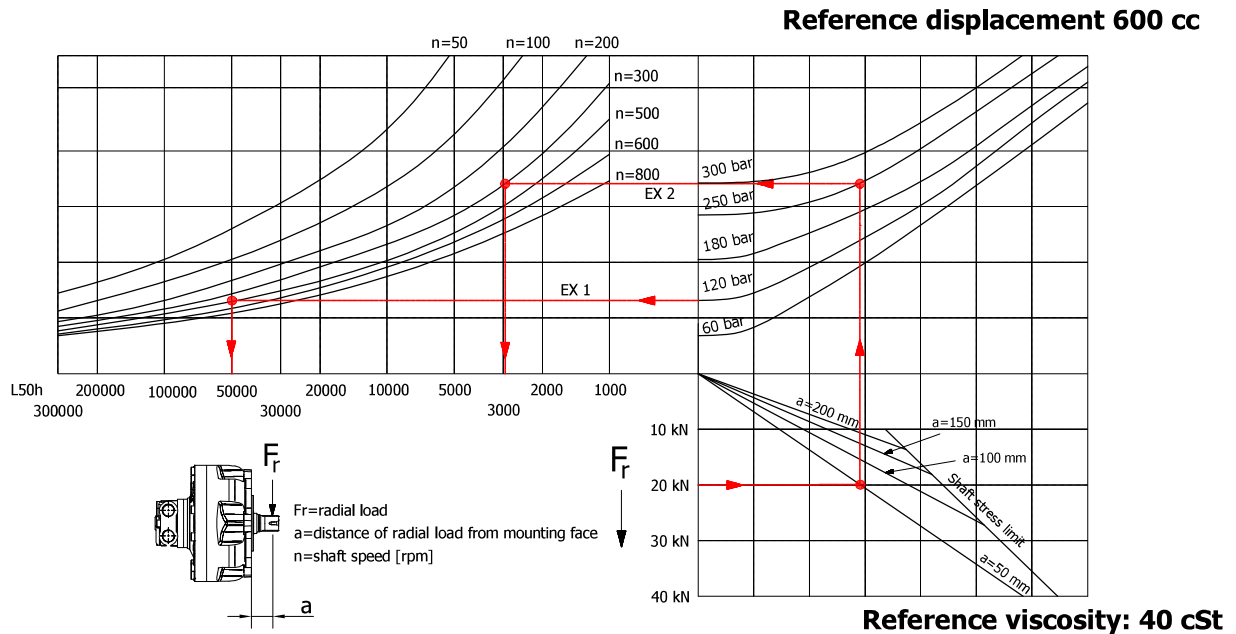


- Continuous operation
- Continuous operation with flushing or intermittent operation (see below for intermittent operation)
- Intermittent operation: permitted for a 15% of duty cycle, for 3 minutes maximum period
- Peak operation: permitted for very short periods (3-5 seconds every 10-15 minutes)

The above diagrams are referring to the hydraulic motor working with a fluid in ideal conditions (viscosity at 40 cSt). In case the working temperature increases and viscosity reach values under the recommended values (see hydraulic fluid recommendations) flushing must be performed or ISO oil grade must be changed. The working temperature must not overcome 70 °C.

The data specified into the catalogue are for product description purpose only and must not be interpreted as warranted characteristics in legal sense. ItalgrouP S.r.l. reserves the right to implement modifications without notice. All partial or total reproduction and copy without written authorization of ItalgrouP S.r.l. is strictly forbidden.

BEARING LIFE



Example:

We suppose (EX1): $p=120$ [bar], $n=500$ [rpm]; we obtain an average lifetime of 50000 [h].

If we suppose (EX2): $F_r=20$ [kN], $a=50$ [mm], $n=300$ [rpm] and $p=250$ [bar] we obtain an average lifetime of 2900 [h].

HC3- ORDERING CODE

HC	3	---	--	--	--	--	--	SB -
----	---	-----	----	----	----	----	----	------

DISPLACEMENT

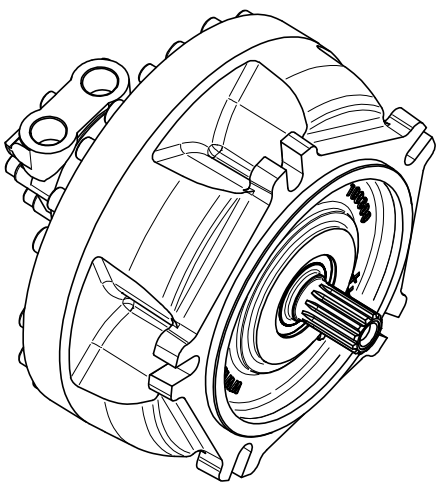
350	400	500	600
700	800	900	1000

INTERCHANGEABILITY

/G2
/G4

SPECIAL FEATURES

HSM
See pag. 9
MP
SPSL
HPS
CCW
See pag. 25
Z - -
Italgroup internal code



SHAFT

A0	A1
A2	A3
A31	

TACHOMETER

J (*)
TA
TB
TT1
TQ1
EST
EST30
EST31
See pag. 90-93

(*) Tachometer predisposition

DISTRIBUTOR

D31B	D36B
D310B	D40
D47	D416
D90	
See pag. 88-89	

SPLINE BILLET

SB3	SB5
SB17	SB22
SB23	
See pag. 94	