

---

***ITALGROUP SRL***  
***HC SERIES - HC5***  

---

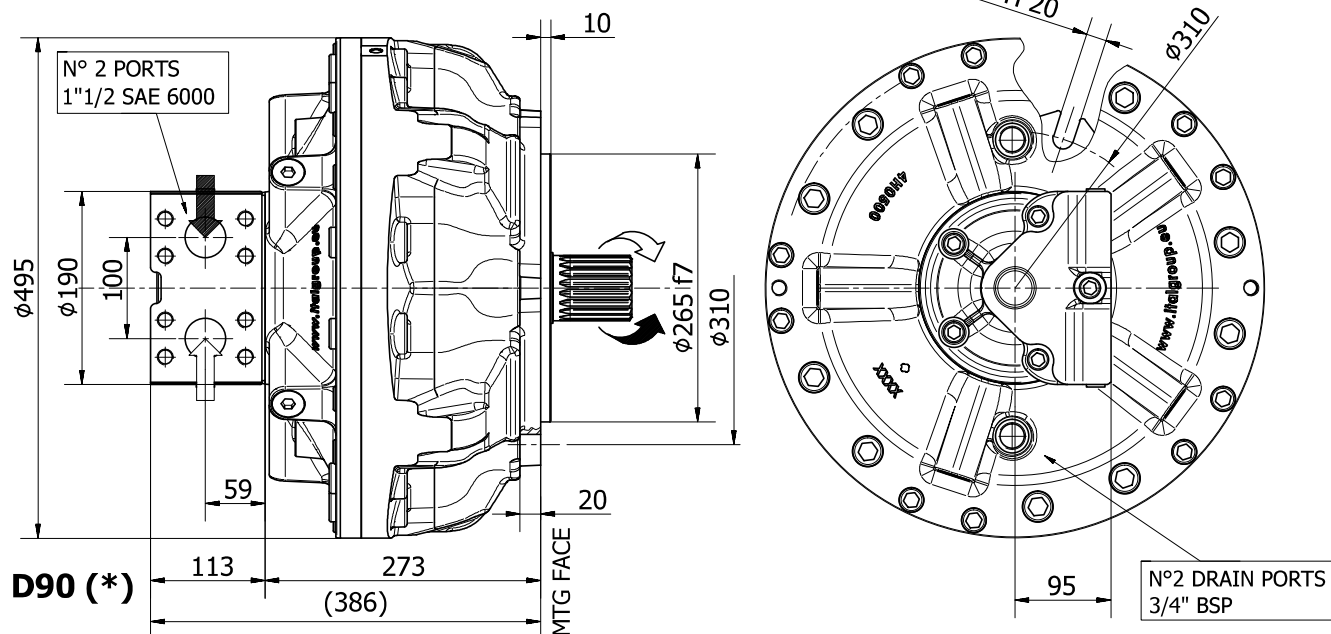
***GENERAL CATALOGUE***  

---

***INDEX - HC5***

<u>HC5 - INSTALLATION DRAWING</u>	Pag	78 - 79
<u>HC5 / G4 - INSTALLATION DRAWING</u>	"	80 - 81
<u>HC5 - PERFORMANCE DIAGRAMS</u>	"	82 - 86
<u>ORDERING CODE</u>	"	87

**INSTALLATION DRAWING**



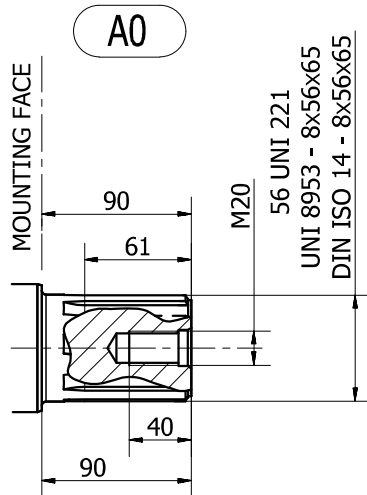
**TECHNICAL DATA**

		<b>800</b>	<b>1000</b>	<b>1200</b>	<b>1300</b>	<b>1500</b>	<b>1600</b>	<b>1800</b>	<b>2000</b>
DISPLACEMENT	[cc]	837	1060	1200	1308	1462	1625	1816	2010
SPECIFIC TORQUE	[Nm/bar]	13,3	16,9	19,1	20,8	23,3	25,9	28,3	31,3
MAX. CONT. PRESSURE	[bar]	250	250	250	250	250	250	250	250
HYDROSTATIC TEST PRESSURE	[bar]	420	420	420	420	420	420	420	420
MAX. CONT. SPEED	[rpm]	350	320	320	320	300	280	280	220
PEAK SPEED (***)	[rpm]	470	470	430	430	380	350	350	280
MAX. CONT. POWER (****)	[kW]	100	100	100	100	100	100	100	100
MAX. CONT. POWER WITH FLUSHING	[kW]	150	150	150	150	150	150	150	150
MAX. CASE PRESSURE	[bar]	6	6	6	6	6	6	6	6
DRY WEIGHT	[kg]	190	190	190	190	190	190	190	190
TEMPERATURE RANGE (**)	[°C]	-30÷70	-30÷70	-30÷70	-30÷70	-30÷70	-30÷70	-30÷70	-30÷70

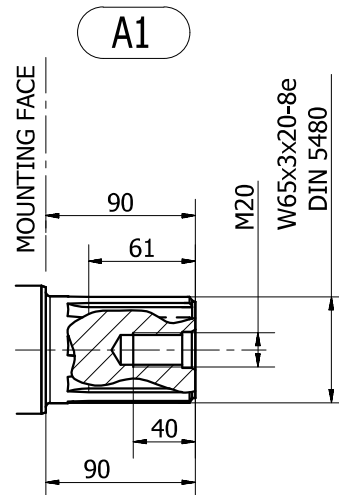
- (\*) The standard distributor (D90) is shown. Please refer to distributors section (pag. 82-83) for different distributor interfaces.
- (\*\*) Please refer to the hydraulic fluid recommendations (pag. 8-9).
- (\*\*\*) Do not exceed maximum continuous power with flushing (pag. 11).
- (\*\*\*\*) For motor operation with a continuous duty cycle at maximum continuous power the flushing is usually required. For more information please contact our technical department.

The data specified into the catalogue are for product description purpose only and must not be interpreted as warranted characteristics in legal sense. Italgrou S.r.l. reserves the right to implement modifications without notice. All partial or total reproduction and copy without written authorization of Italgrou S.r.l. is strictly forbidden.

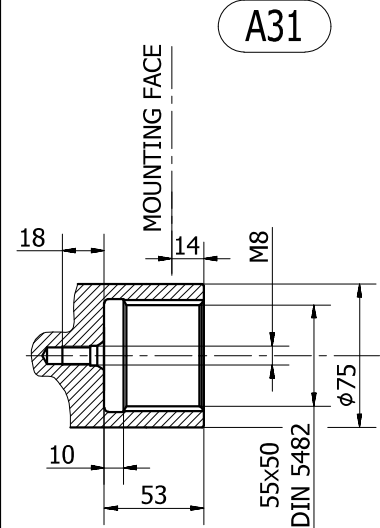
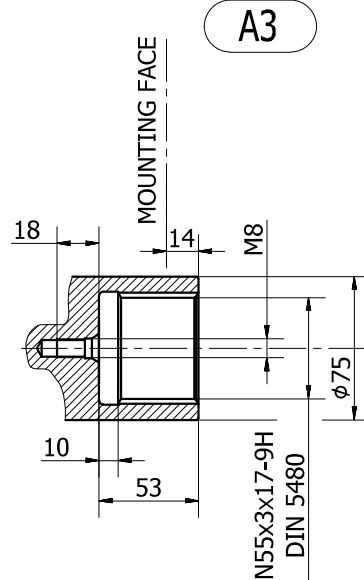
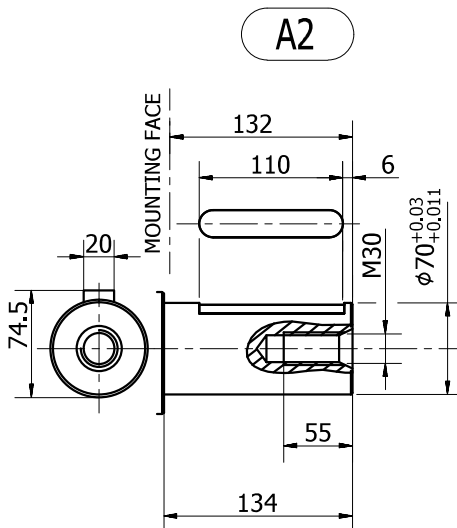
## SHAFT CONFIGURATIONS



Available spline billet: (SB17)

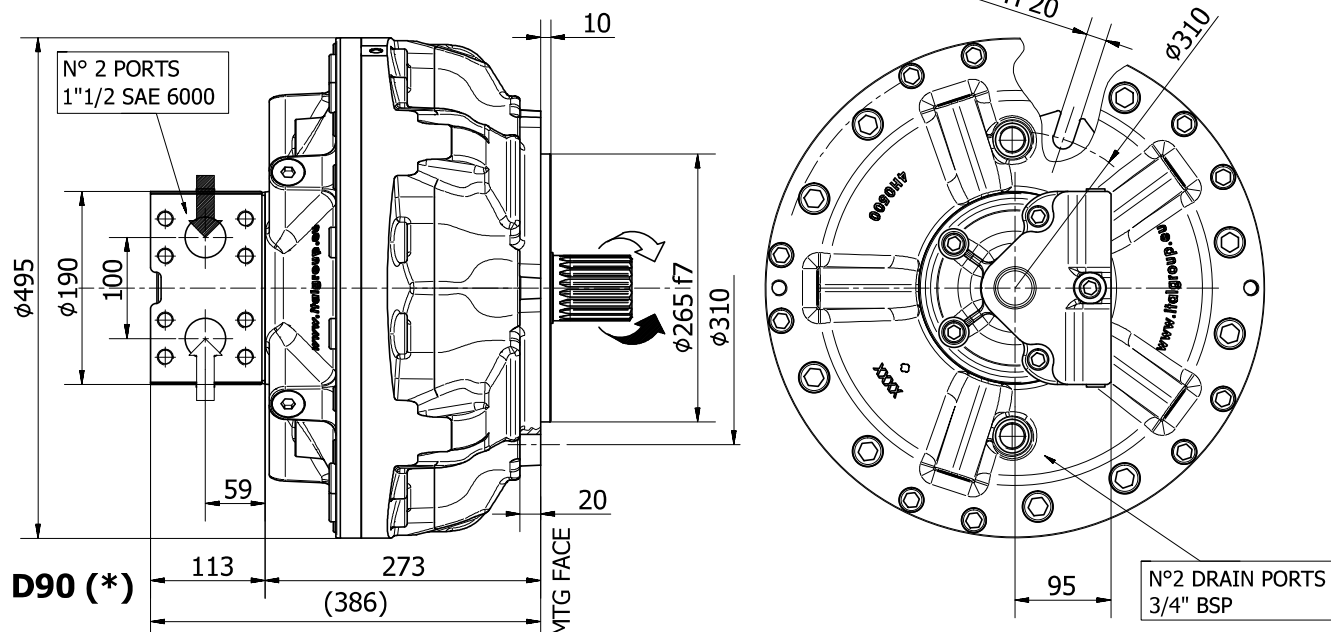


Available spline billet: (SB23)



The data specified into the catalogue are for product description purpose only and must not be interpreted as warranted characteristics in legal sense. Italgroup S.r.l. reserves the right to implement modifications without notice. All partial or total reproduction and copy without written authorization of Italgroup S.r.l. is strictly forbidden.

**INSTALLATION DRAWING**



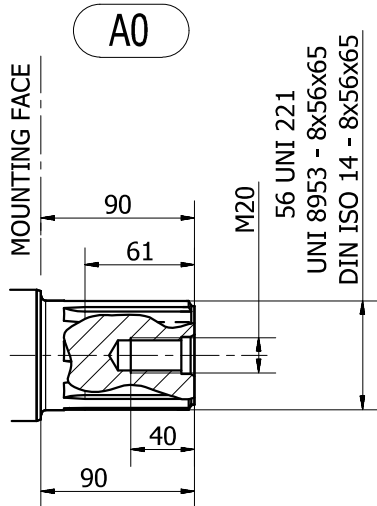
**TECHNICAL DATA**

		800	1000	1200	1300	1500	1600	1800	2000
DISPLACEMENT	[cc]	837	1060	1200	1308	1462	1625	1816	2010
SPECIFIC TORQUE	[Nm/bar]	13,3	16,9	19,1	20,8	23,3	25,9	28,3	31,3
MAX. CONT. PRESSURE	[bar]	250	250	250	250	250	250	250	250
HYDROSTATIC TEST PRESSURE	[bar]	420	420	420	420	420	420	420	420
MAX. CONT. SPEED	[rpm]	350	320	320	320	300	280	280	220
PEAK SPEED (***)	[rpm]	470	470	430	430	380	350	350	280
MAX. CONT. POWER (****)	[kW]	100	100	100	100	100	100	100	100
MAX. CONT. POWER WITH FLUSHING	[kW]	150	150	150	150	150	150	150	150
MAX. CASE PRESSURE	[bar]	6	6	6	6	6	6	6	6
DRY WEIGHT	[kg]	190	190	190	190	190	190	190	190
TEMPERATURE RANGE (**)	[°C]	-30÷70	-30÷70	-30÷70	-30÷70	-30÷70	-30÷70	-30÷70	-30÷70

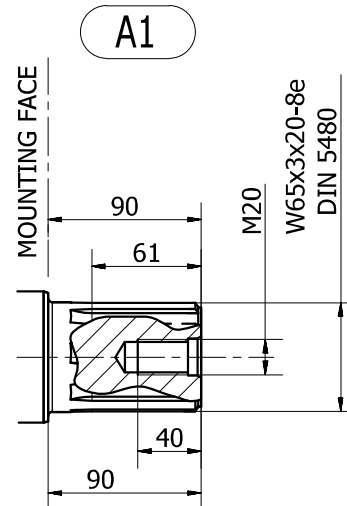
- (\*) The standard distributor (D90) is shown. Please refer to distributors section (pag. 82-83) for different distributor interfaces.
- (\*\*) Please refer to the hydraulic fluid recommendations (pag. 8-9).
- (\*\*\*) Do not exceed maximum continuous power with flushing (pag. 11).
- (\*\*\*\*) For motor operation with a continuous duty cycle at maximum continuous power the flushing is usually required. For more information please contact our technical department.

The data specified into the catalogue are for product description purpose only and must not be interpreted as warranted characteristics in legal sense. Italgrou S.r.l. reserves the right to implement modifications without notice. All partial or total reproduction and copy without written authorization of Italgrou S.r.l. is strictly forbidden.

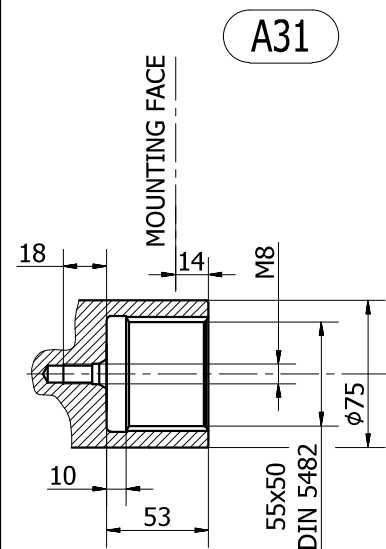
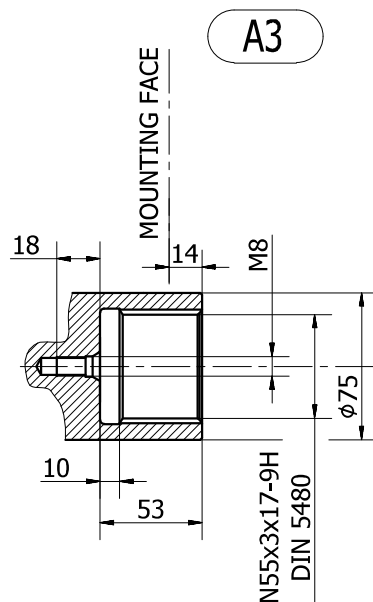
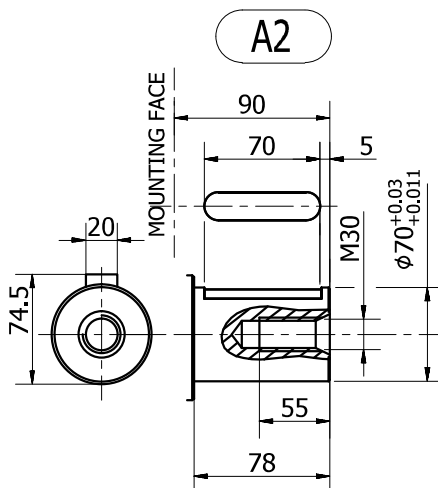
## SHAFT CONFIGURATIONS



Available spline billet: (SB17)



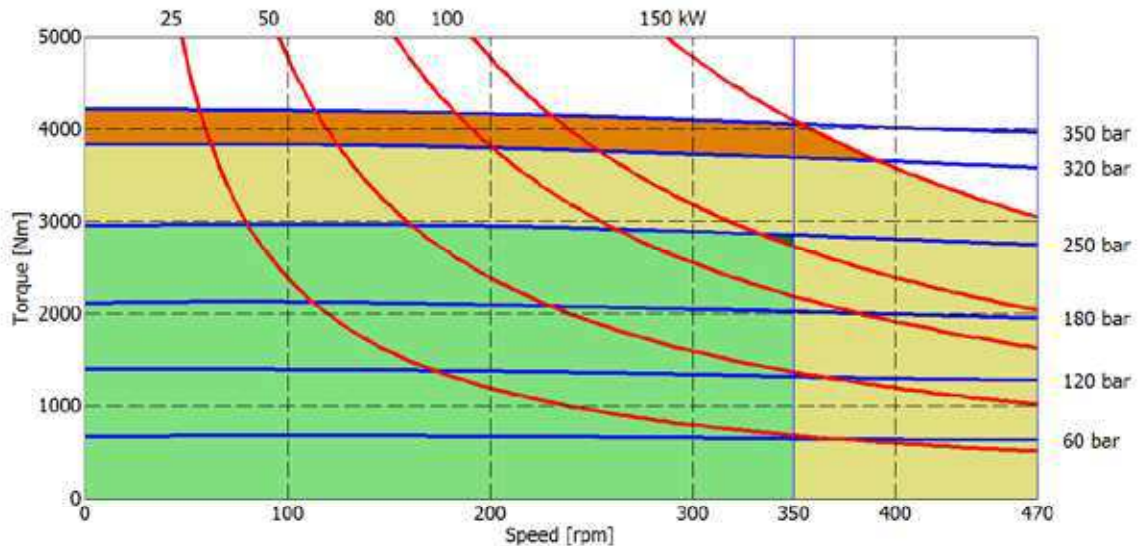
Available spline billet: (SB23)



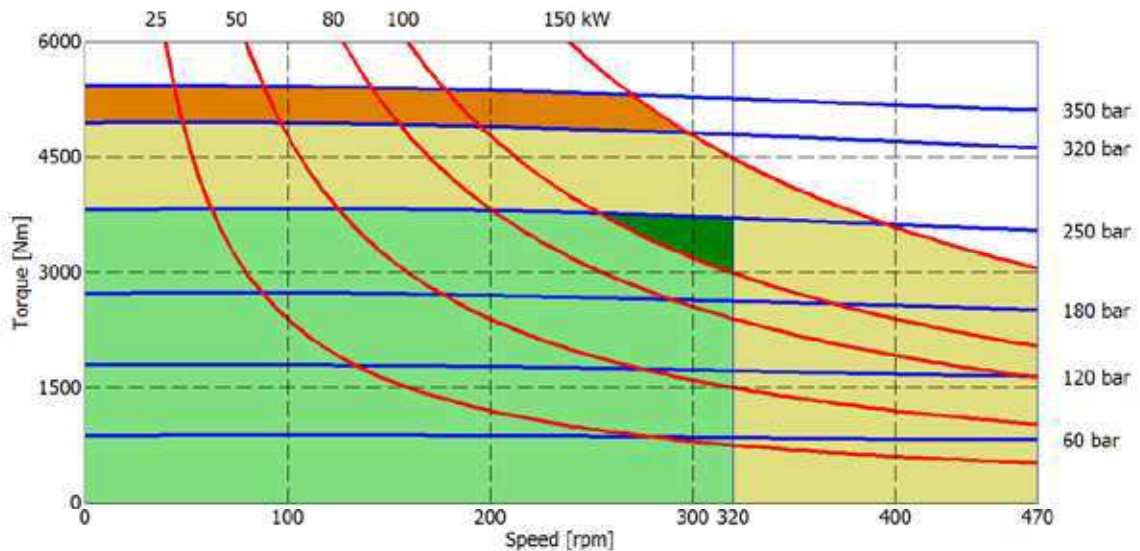
The data specified into the catalogue are for product description purpose only and must not be interpreted as warranted characteristics in legal sense. Italgroup S.r.l. reserves the right to implement modifications without notice. All partial or total reproduction and copy without written authorization of Italgroup S.r.l. is strictly forbidden.

## HC5 - PERFORMANCE DIAGRAMS

### 800 cc



### 1000 cc



- Continuous operation
- Continuous operation with flushing or intermittent operation (see below for intermittent operation)
- Intermittent operation: permitted for a 15% of duty cycle, for 3 minutes maximum period
- Peak operation: permitted for very short periods (3-5 seconds every 10-15 minutes)

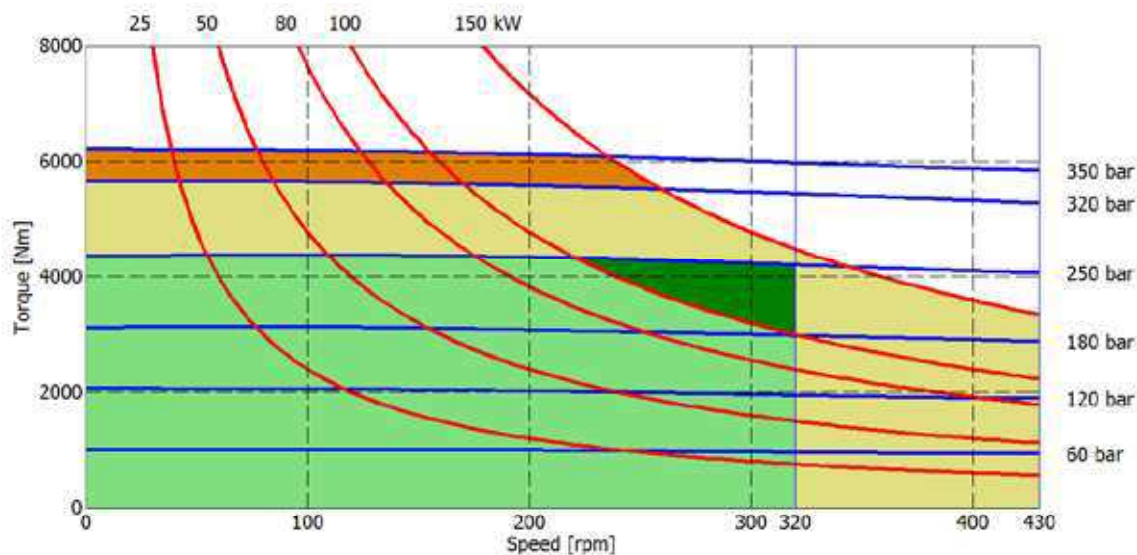
**The above diagrams are referring to the hydraulic motor working with a fluid in ideal conditions (viscosity at 40 cSt).** In case the working temperature increases and viscosity reach values under the recommended values (see hydraulic fluid recommendations) flushing must be performed or ISO oil grade must be changed. The working temperature must not overcome 70 °C.

The data specified into the catalogue are for product description purpose only and must not be interpreted as warranted characteristics in legal sense. Italgrou S.r.l. reserves the right to implement modifications without notice. All partial or total reproduction and copy without written authorization of Italgrou S.r.l. is strictly forbidden.

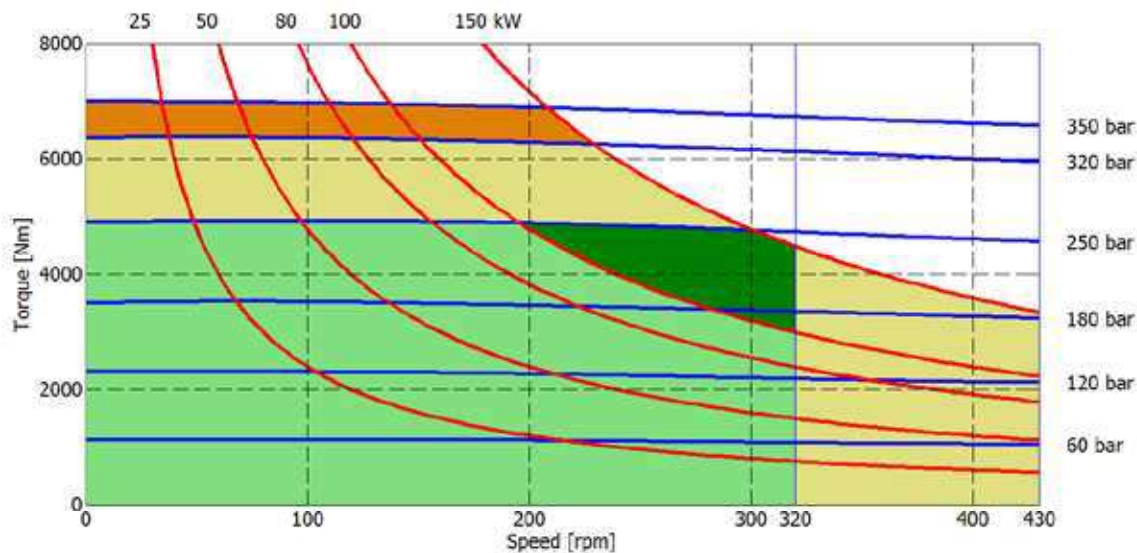


## HC5 - PERFORMANCE DIAGRAMS

### 1200 cc



### 1300 cc



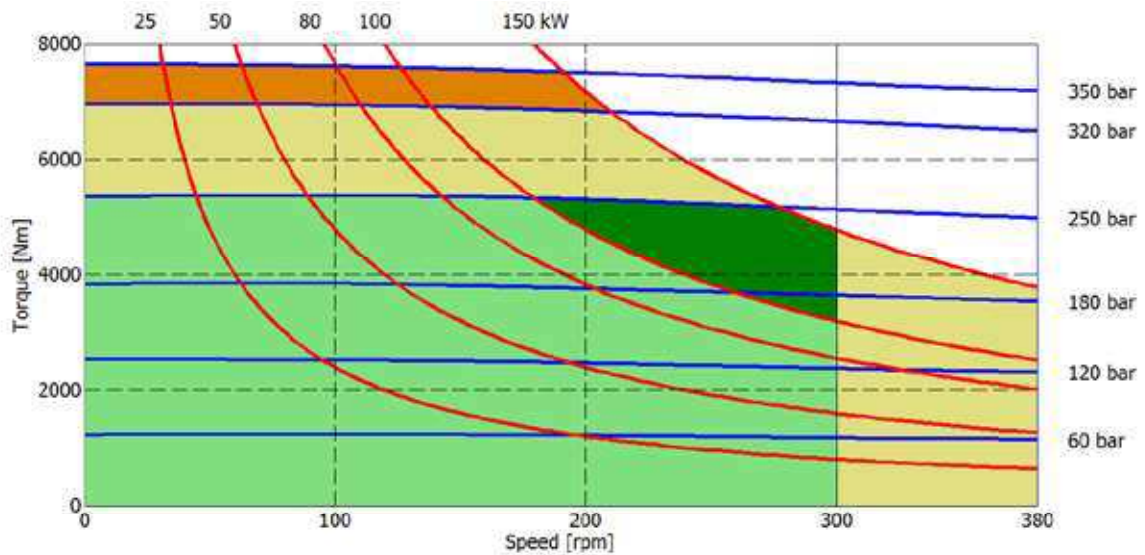
- Continuous operation
- Continuous operation with flushing or intermittent operation (see below for intermittent operation)
- Intermittent operation: permitted for a 15% of duty cycle, for 3 minutes maximum period
- Peak operation: permitted for very short periods (3-5 seconds every 10-15 minutes)

**The above diagrams are referring to the hydraulic motor working with a fluid in ideal conditions (viscosity at 40 cSt).** In case the working temperature increases and viscosity reach values under the recommended values (see hydraulic fluid recommendations) flushing must be performed or ISO oil grade must be changed. The working temperature must not overcome 70 °C.

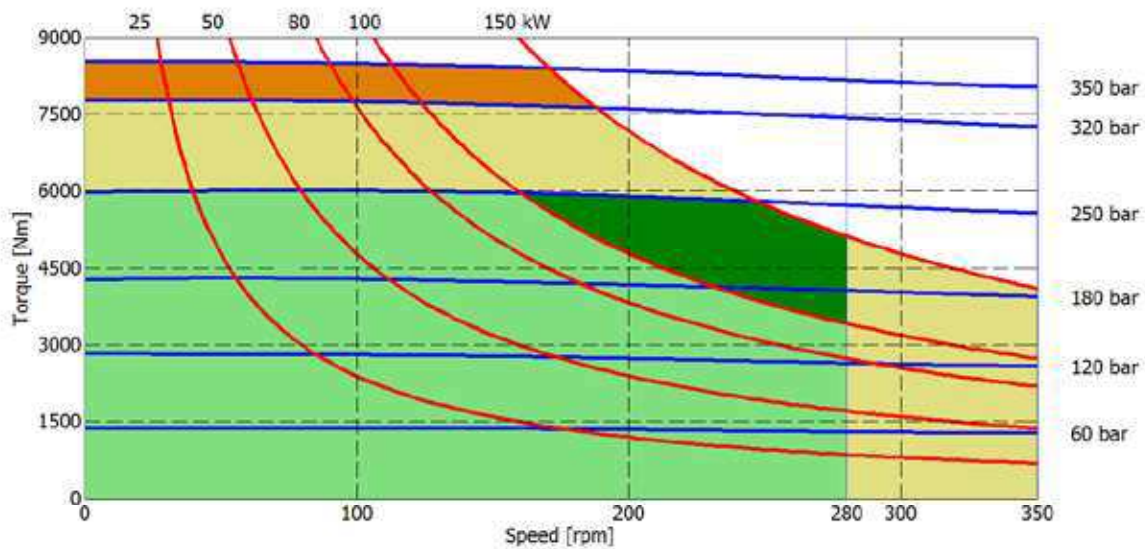
The data specified into the catalogue are for product description purpose only and must not be interpreted as warranted characteristics in legal sense. ItalgrouP S.r.l. reserves the right to implement modifications without notice. All partial or total reproduction and copy without written authorization of ItalgrouP S.r.l. is strictly forbidden.

## HC5- PERFORMANCE DIAGRAMS

### 1500 cc



### 1600 cc



- Continuous operation
- Continuous operation with flushing or intermittent operation (see below for intermittent operation)
- Intermittent operation: permitted for a 15% of duty cycle, for 3 minutes maximum period
- Peak operation: permitted for very short periods (3-5 seconds every 10-15 minutes)

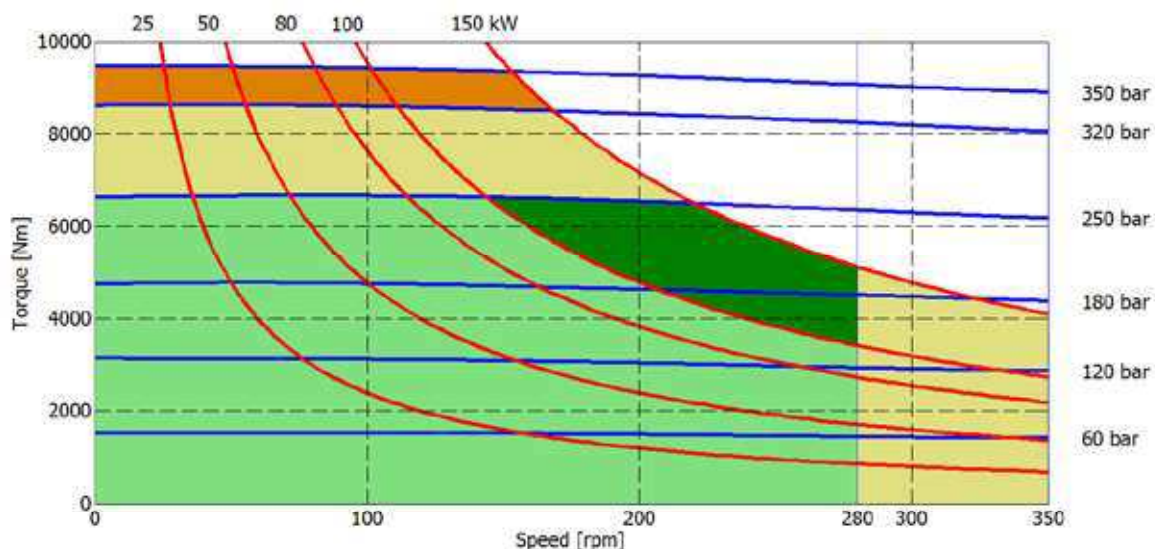
**The above diagrams are referring to the hydraulic motor working with a fluid in ideal conditions (viscosity at 40 cSt).** In case the working temperature increases and viscosity reach values under the recommended values (see hydraulic fluid recommendations) flushing must be performed or ISO oil grade must be changed. The working temperature must not overcome 70 °C.

The data specified into the catalogue are for product description purpose only and must not be interpreted as warranted characteristics in legal sense. Italgrou S.r.l. reserves the right to implement modifications without notice. All partial or total reproduction and copy without written authorization of Italgrou S.r.l. is strictly forbidden.

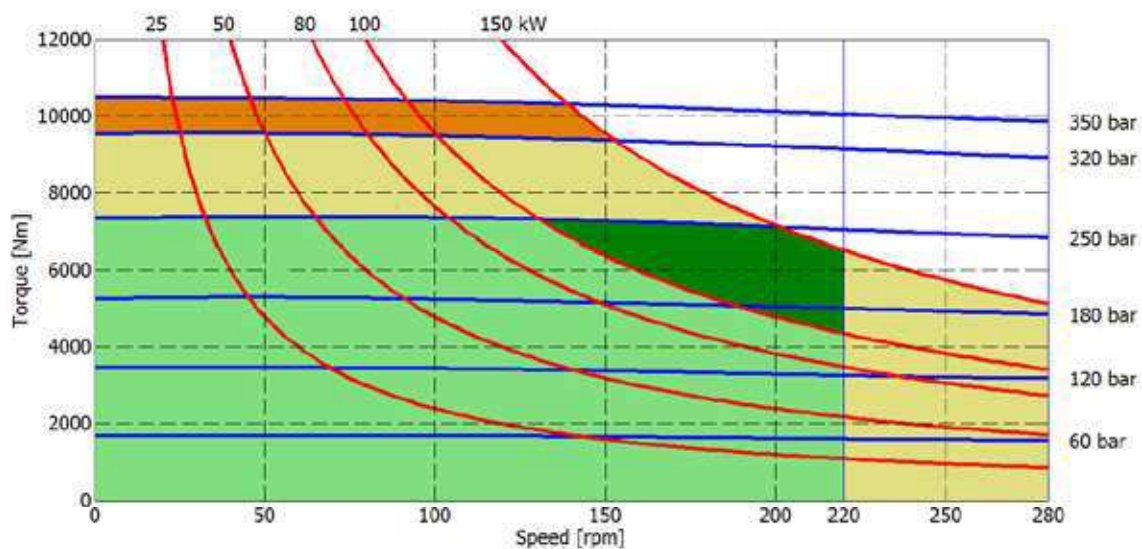


## HC5 - PERFORMANCE DIAGRAMS

### 1800 cc



### 2000 cc

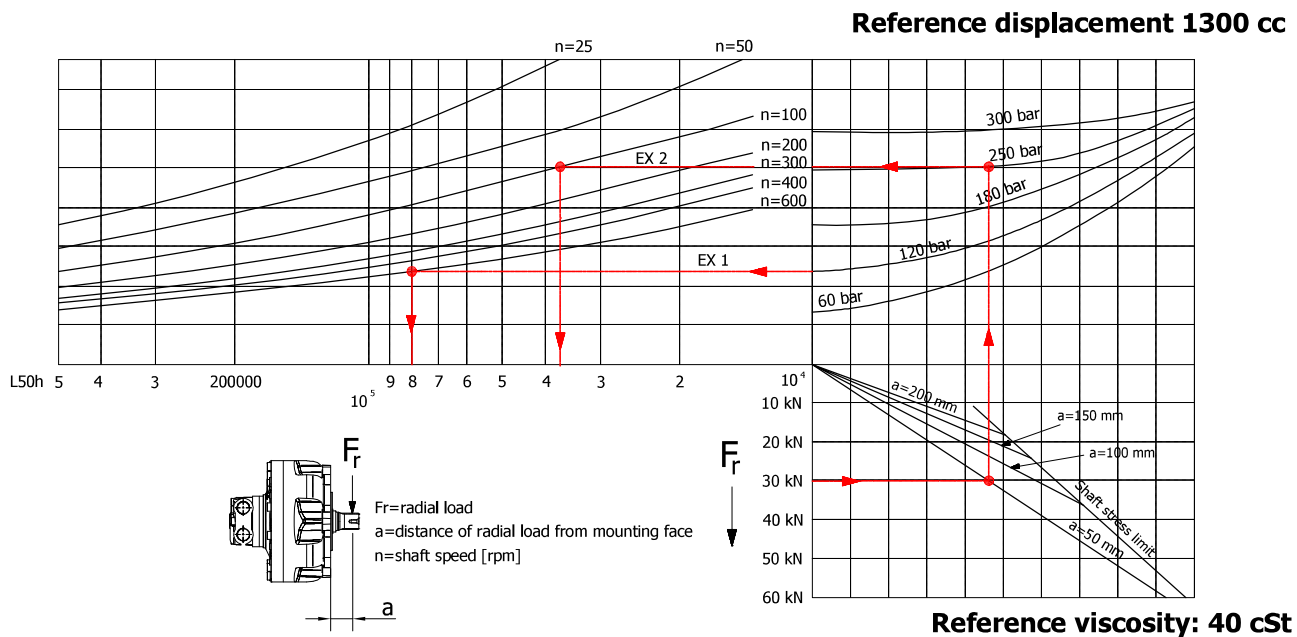


- Continuous operation
- Continuous operation with flushing or intermittent operation (see below for intermittent operation)
- Intermittent operation: permitted for a 15% of duty cycle, for 3 minutes maximum period
- Peak operation: permitted for very short periods (3-5 seconds every 10-15 minutes)

**The above diagrams are referring to the hydraulic motor working with a fluid in ideal conditions (viscosity at 40 cSt).** In case the working temperature increases and viscosity reach values under the recommended values (see hydraulic fluid recommendations) flushing must be performed or ISO oil grade must be changed. The working temperature must not overcome 70 °C.

The data specified into the catalogue are for product description purpose only and must not be interpreted as warranted characteristics in legal sense. Italgroup S.r.l. reserves the right to implement modifications without notice. All partial or total reproduction and copy without written authorization of Italgroup S.r.l. is strictly forbidden.

**BEARING LIFE**



**Example:**

We suppose (EX1):  $p=120$  [bar],  $n=600$  [rpm]; we obtain an average lifetime of 80000 [h].

If we suppose (EX2):  $F_r=30$  [kN],  $a=50$  [mm],  $n=100$  [rpm] and  $p=250$  [bar] we obtain an average lifetime of 38000 [h].

## HC5 - ORDERING CODE

HC	5	---	--	--	--	--	--	SB -
----	---	-----	----	----	----	----	----	------

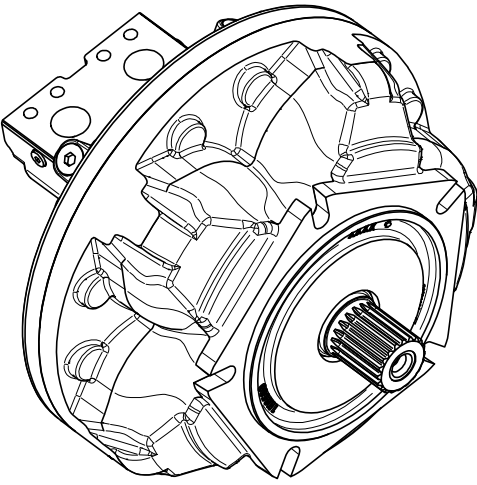
**DISPLACEMENT**

(800) (1000) (1200) (1300)  
(1500) (1600) (1800) (2000)

**INTERCHANGEABILITY**

(/G4)



**SHAFT**

(A0) (A1)  
(A2) (A3)  
(A31)

**DISTRIBUTOR**

(D31B) (D36B)  
(D310B) (D40)  
(D47) (D416)  
(D90)

See pag. 88-89

**TACHOMETER**

(J) (\*)  
(TA)  
(TB)  
(TT1)  
(TQ1)  
(EST)  
(EST30)  
(EST31)

See pag. 90-93

(\*) Tachometer predisposition

**SPECIAL FEATURES**

(HSM)  
See pag. 9

(MP)  
(SPSL)  
(HPS)  
(CCW)  
See pag. 25

(Z - -)  
Italgroup  
internal code

**SPLINE  
BILLET**

(SB17) (SB23)  
See pag. 94