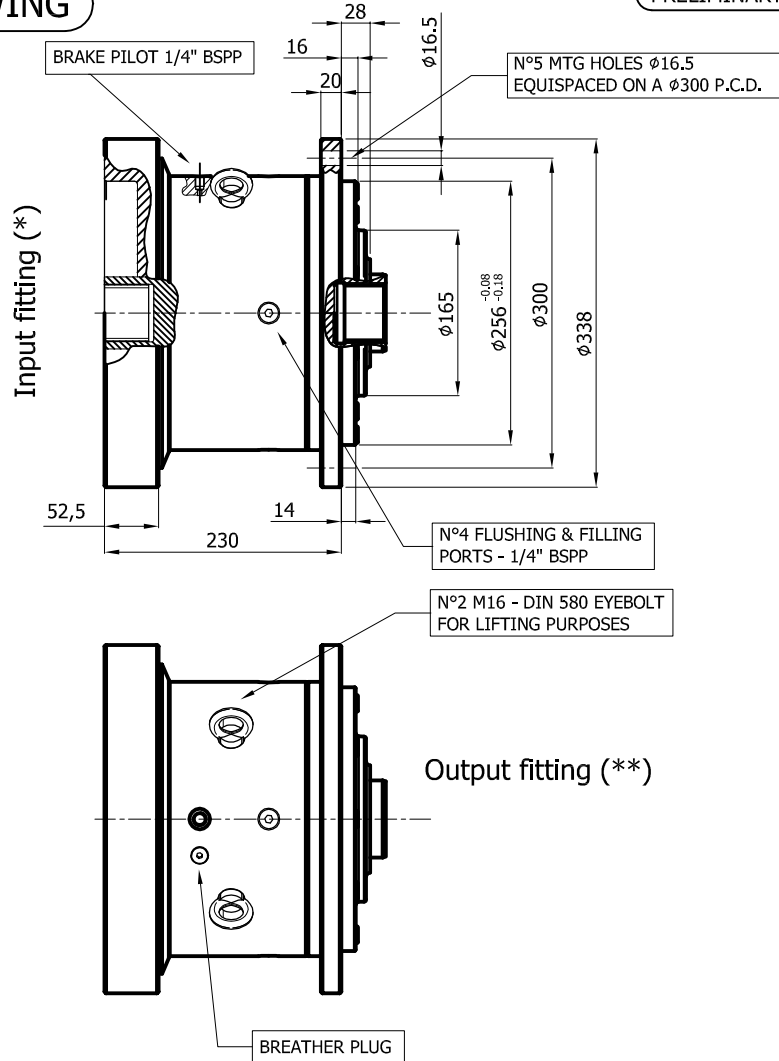


INSTALLATION DRAWING

PRELIMINARY EDITION



TECHNICAL DATA

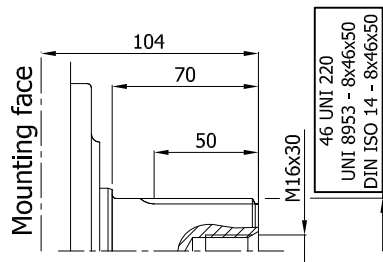
	B1 400	B1 550
RATED BRAKING TORQUE [Nm]	4000	5500
RELEASE PRESSURE [bar]	35-40 (***)	35-40 (***)
MAX. PRESSURE [bar]	350	350
WEIGHT [kg]	95	95

(*) See next page for input configuration
 (**) See next page for output shaft options
 (***) The brake starts to release the load at 25-30 bar, the brake is fully opened at 35-40 bar.

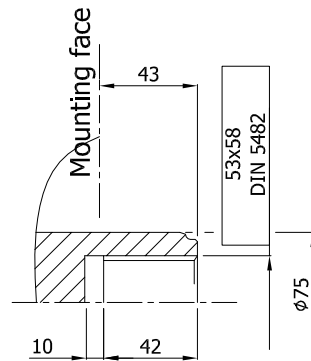
OUTPUT SHAFT CONFIGURATION

PRELIMINARY EDITION

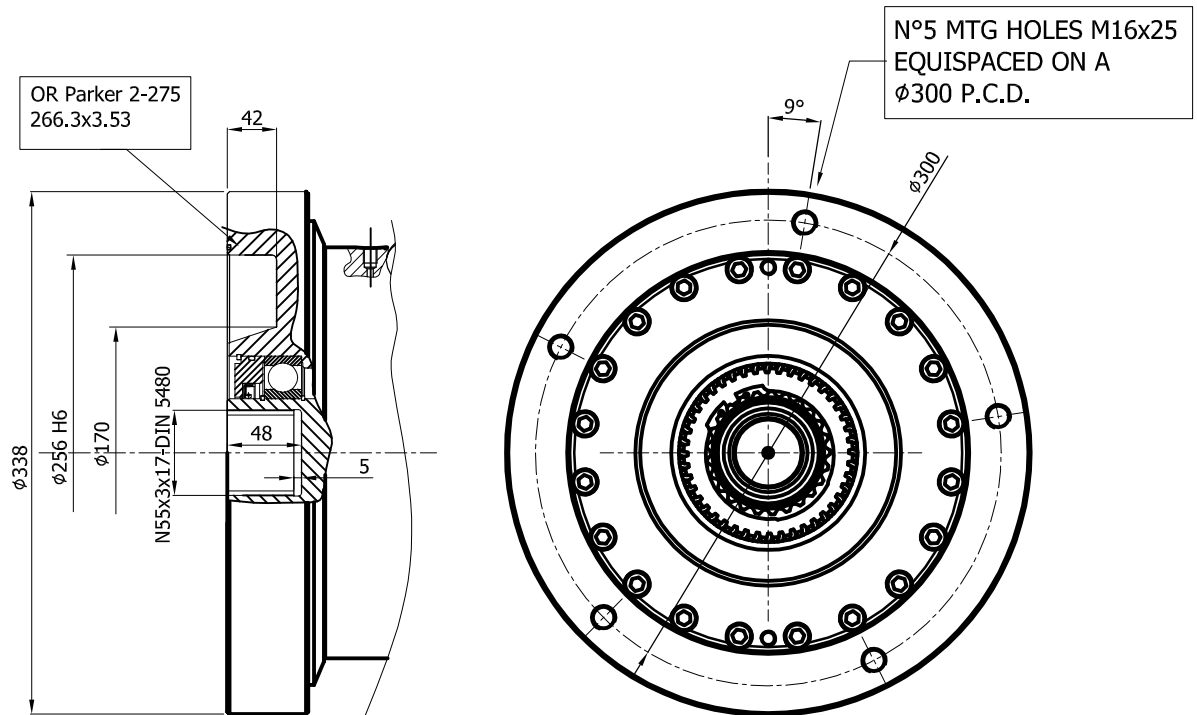
A0



A3

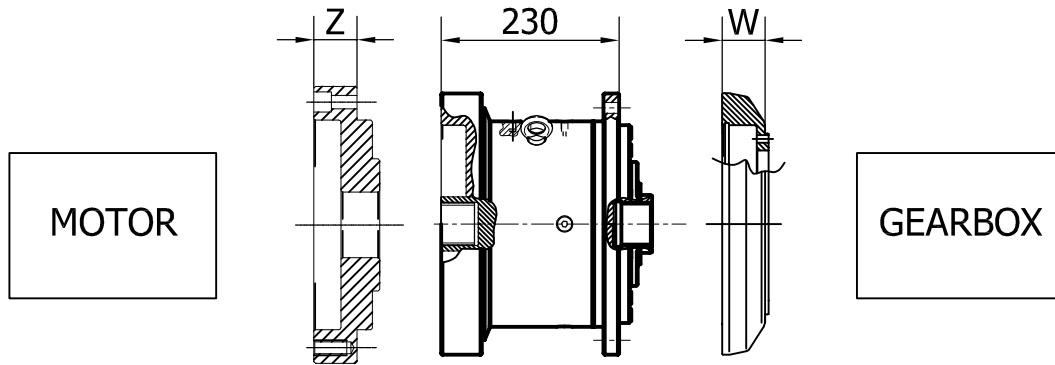


INPUT CONFIGURATION

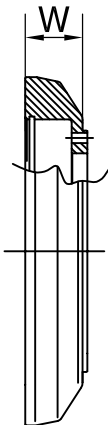


BRAKE CONNECTIONS

PRELIMINARY EDITION

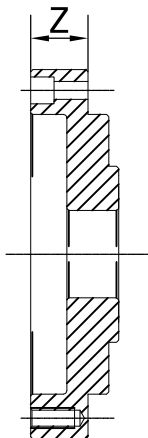


GEARBOX ADAPTORS



GEARBOX	W	CODE	ORDERING CODE
PG 701 - PG 1001 - PG 1601 PG 1802 - PG 2502 - PG 3002 PG 5002 - PG 6503 - PG 9003	56	206.004.0007	G1

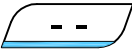


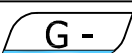
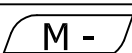
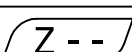
MOTOR ADAPTORS



MOTOR	Z	CODE	ORDERING CODE
IAM 200-250-300-350 H2 A3	47	206.004.0001	M1
IAM 400-500-600 H2 A3	42	206.004.0002	M2
IAM 400-450-500-600-700 H3 A3	42	206.004.0003	M3
IAM 700-800-900-1000 H4 A3	58	206.004.0004	M4
HC2 A3	38	206.004.0005	M5
HC3 A3	58	206.004.0006	M6

ORDERING CODE

PRELIMINARY EDITION

	Brake model
	Torque
	Output shaft (*)
	Gearbox adaptor (optional)
	Motor adaptor (optional)
	Special features (Italgroup internal code)

(*) if gearbox adaptor is selected, brake is assembled with A3 female shaft

Example: B1 400 A3
 B1 550 A0
 B1 550 A3 G1
 B1 400 A3 G1 M3