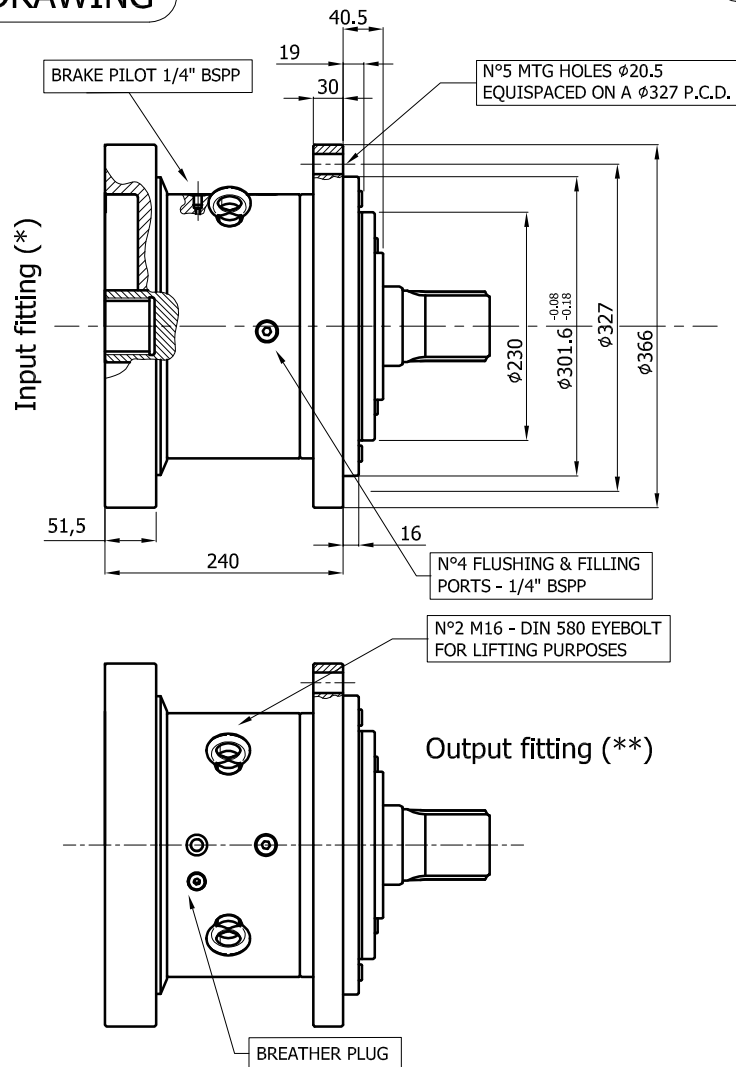


INSTALLATION DRAWING

PRELIMINARY EDITION



TECHNICAL DATA

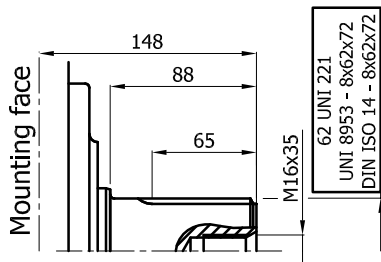
	B2 750	B2 1000	B2 1200
RATED BRAKING TORQUE [Nm]	7500	10000	12000
RELEASE PRESSURE [bar]	35 (***)	35 (***)	40 (***)
MAX. PRESSURE [bar]	350	350	350
WEIGHT [kg]	135	130	130

(\*) See next page for input configuration  
 (\*\*) See next page for output shaft options  
 (\*\*\*) The brake starts to release the load at 35-40 bar, the brake is fully opened at 60-65 bar.

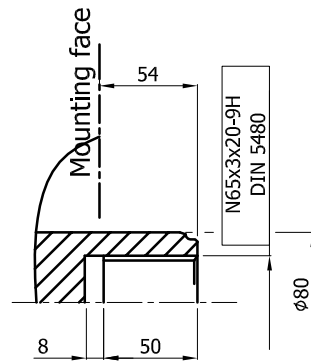
OUTPUT SHAFT CONFIGURATION

PRELIMINARY EDITION

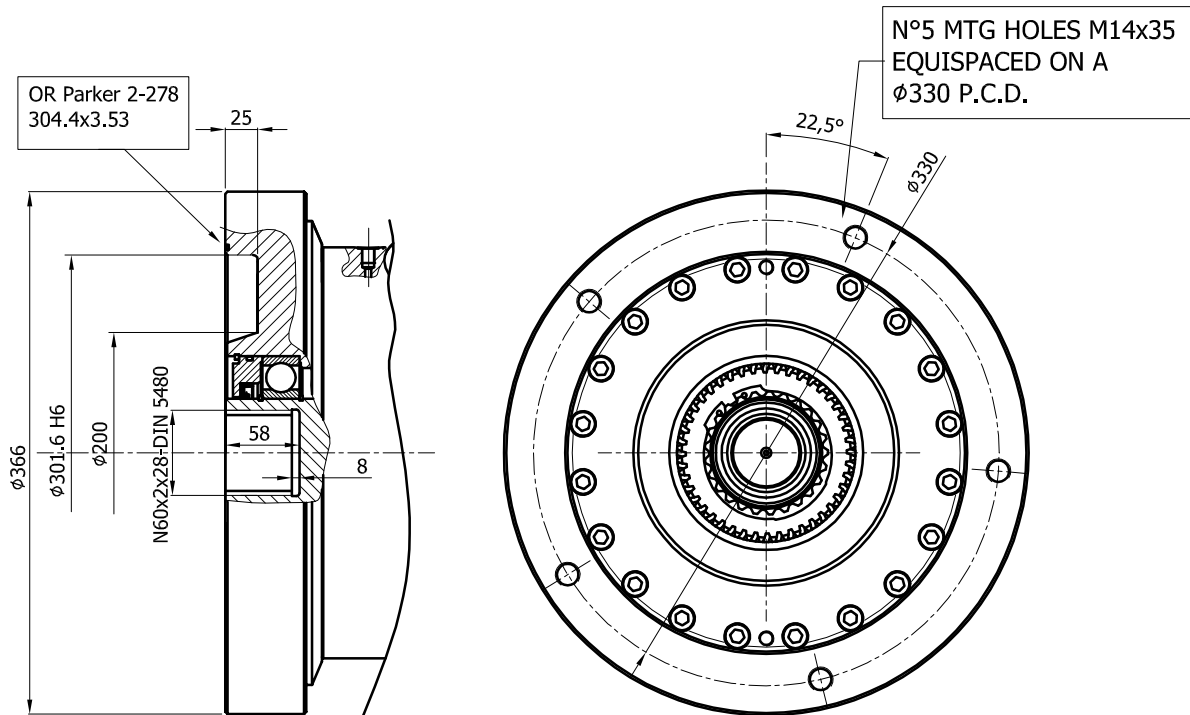
A0



A33

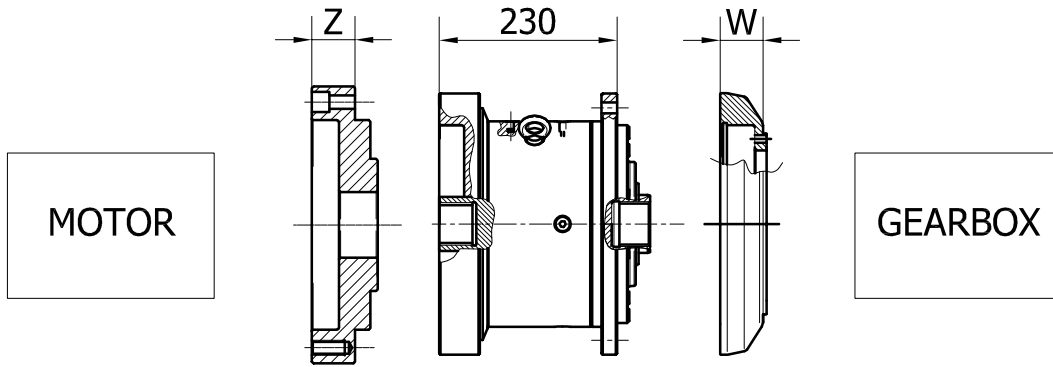


INPUT CONFIGURATION

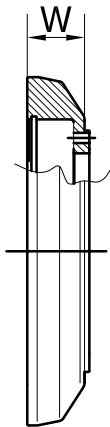


**BRAKE CONNECTIONS**

PRELIMINARY EDITION

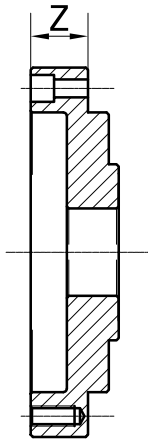


**GEARBOX ADAPTORS**



GEARBOX	W	CODE	ORDERING CODE
PG 2501 - PG 6502 - PG 9002	73	206.004.0011	G1

**MOTOR ADAPTORS**

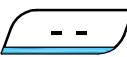
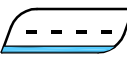



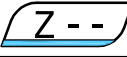


MOTOR	Z	CODE	ORDERING CODE
IAM H5 A33 (*) - IAC H5 A33 (*)	69	206.004.0012	M1
HC5 A3	35	206.004.0013	M2

(\*) Special female shaft N65x3x20 DIN 5480  
 (same like A33 brake output shaft)

ORDERING CODE

PRELIMINARY EDITION

	Brake model
	Torque
	Output shaft (*)
	Gearbox adaptor (optional)
	Motor adaptor (optional)
	Special features (Italgroup internal code)

(\*) if gearbox adaptor is selected, brake is assembled with A33 female shaft

Example: B2 750 A33  
B2 1200 A0  
B2 750 A33 G1  
B1 1200 A33 G1 M1