
ITALGROUP SRL

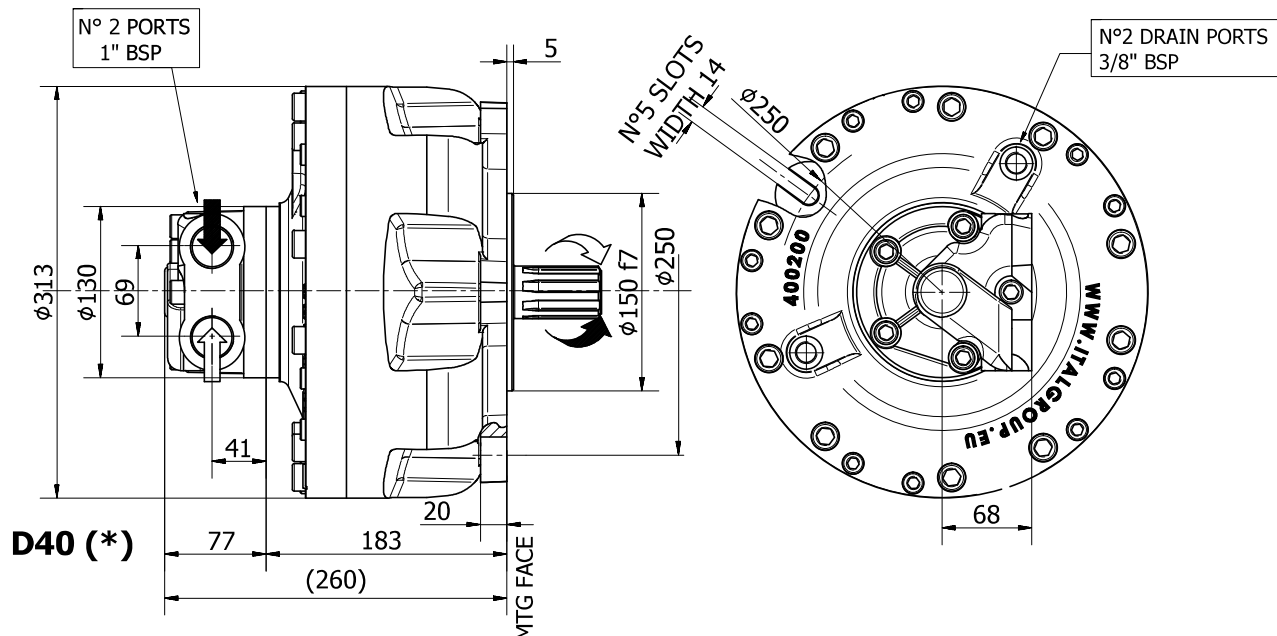
HC SERIES - HC2

GENERAL CATALOGUE

INDEX - HC2

<u>HC2 - INSTALLATION DRAWING</u>	Pag	50 - 51
<u>HC2/C300 - INSTALLATION DRAWING</u>	"	52 - 53
<u>HC2/S2 - INSTALLATION DRAWING</u>	"	54 - 55
<u>HC2 - PERFORMANCE DIAGRAMS</u>	"	56 - 60
<u>ORDERING CODE</u>	"	61

INSTALLATION DRAWING



TECHNICAL DATA

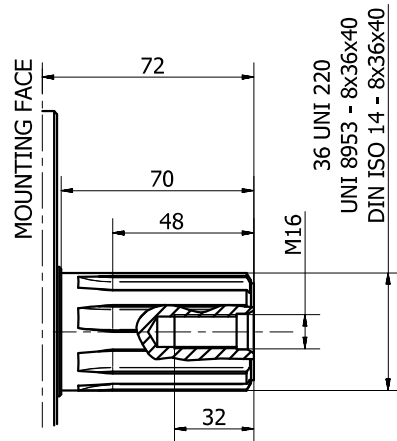
		200	250	300	350	400	500	600	650
DISPLACEMENT	[cc]	193	251	305	348	424	493	566	624
SPECIFIC TORQUE	[Nm/bar]	3,06	4,00	4,84	5,52	6,76	7,84	9,00	9,92
MAX. CONT. PRESSURE	[bar]	250	250	250	250	250	250	250	250
HYDROSTATIC TEST PRESSURE	[bar]	420	420	420	420	420	420	420	420
MAX. CONT. SPEED	[rpm]	1200	950	800	650	600	520	480	440
PEAK SPEED (***)	[rpm]	1500	1150	950	800	800	700	650	620
MAX. CONT. POWER (****)	[kW]	75	75	75	75	75	75	75	75
MAX. CONT. POWER WITH FLUSHING	[kW]	105	105	105	105	105	105	105	105
MAX. CASE PRESSURE	[bar]	6	6	6	6	6	6	6	6
DRY WEIGHT	[kg]	53	53	53	53	53	53	53	53
TEMPERATURE RANGE (**)	[°C]	-30÷70	-30÷70	-30÷70	-30÷70	-30÷70	-30÷70	-30÷70	-30÷70

- (*) The standard distributor (D40) is shown. Please refer to distributors section (pag. 82-83) for different distributor interfaces.
- (**) Please refer to the hydraulic fluid recommendations (pag. 8-9).
- (***) Do not exceed maximum continuous power with flushing (pag. 11).
- (****) For motor operation with a continuous duty cycle at maximum continuous power the flushing is usually required. For more information please contact our technical department.

The data specified into the catalogue are for product description purpose only and must not be interpreted as warranted characteristics in legal sense. Italgrou S.r.l. reserves the right to implement modifications without notice. All partial or total reproduction and copy without written authorization of Italgrou S.r.l. is strictly forbidden.

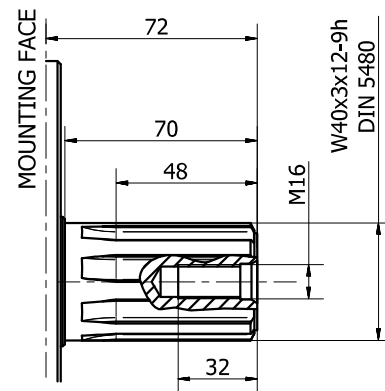
SHAFT CONFIGURATIONS

A0



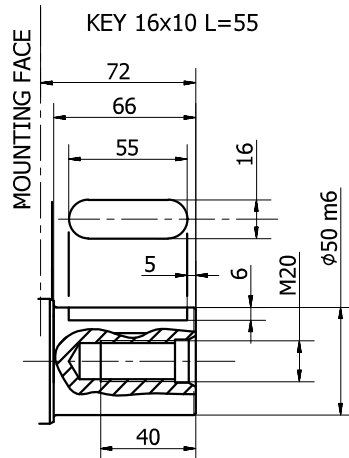
Available spline billet: **SB3**

A1

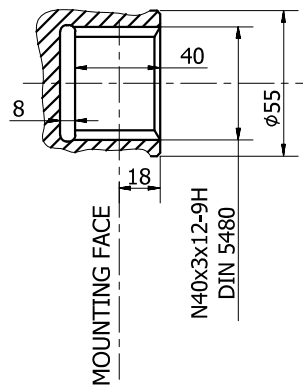


Available spline billet: **SB22**

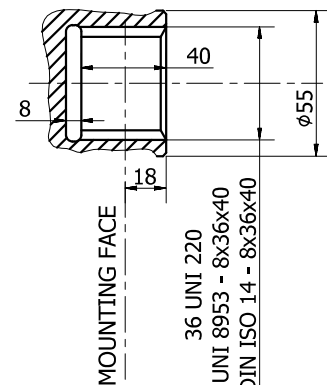
A2



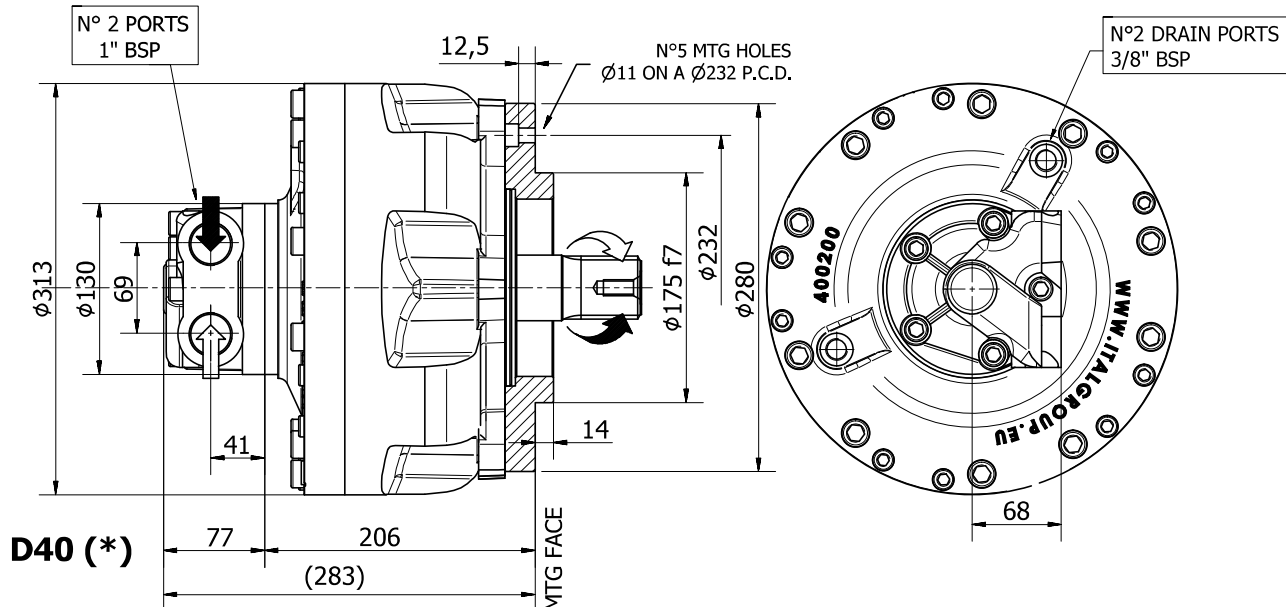
A3



A31



INSTALLATION DRAWING



TECHNICAL DATA

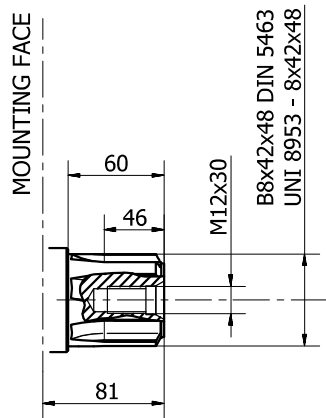
		200	250	300	350	400	500	600	650
DISPLACEMENT	[cc]	193	251	305	348	424	493	566	624
SPECIFIC TORQUE	[Nm/bar]	3,06	4,00	4,84	5,52	6,76	7,84	9,00	9,92
MAX. CONT. PRESSURE	[bar]	250	250	250	250	250	250	250	250
HYDROSTATIC TEST PRESSURE	[bar]	420	420	420	420	420	420	420	420
MAX. CONT. SPEED	[rpm]	1200	950	800	650	600	520	480	440
PEAK SPEED (***)	[rpm]	1500	1150	950	800	800	700	650	620
MAX. CONT. POWER (****)	[kW]	75	75	75	75	75	75	75	75
MAX. CONT. POWER WITH FLUSHING	[kW]	105	105	105	105	105	105	105	105
MAX. CASE PRESSURE	[bar]	6	6	6	6	6	6	6	6
DRY WEIGHT	[kg]	53	53	53	53	53	53	53	53
TEMPERATURE RANGE (**)	[°C]	-30÷70	-30÷70	-30÷70	-30÷70	-30÷70	-30÷70	-30÷70	-30÷70

- (*) The standard distributor (D40) is shown. Please refer to distributors section (pag. 82-83) for different distributor interfaces.
- (**) Please refer to the hydraulic fluid recommendations (pag. 8-9).
- (***) Do not exceed maximum continuous power with flushing (pag. 11).
- (****) For motor operation with a continuous duty cycle at maximum continuous power the flushing is usually required. For more information please contact our technical department.

The data specified into the catalogue are for product description purpose only and must not be interpreted as warranted characteristics in legal sense. Italgrou S.r.l. reserves the right to implement modifications without notice. All partial or total reproduction and copy without written authorization of Italgrou S.r.l. is strictly forbidden.

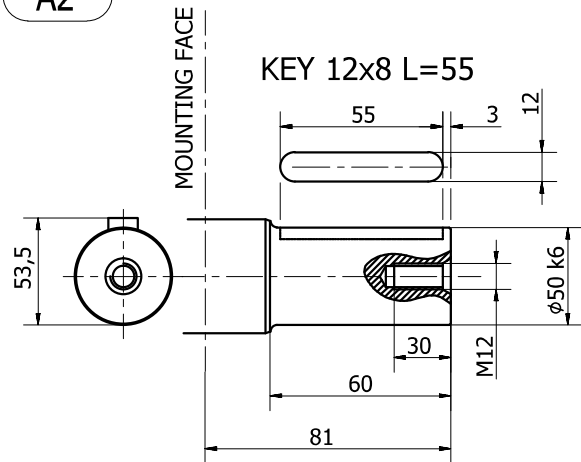
SHAFT CONFIGURATIONS

A0

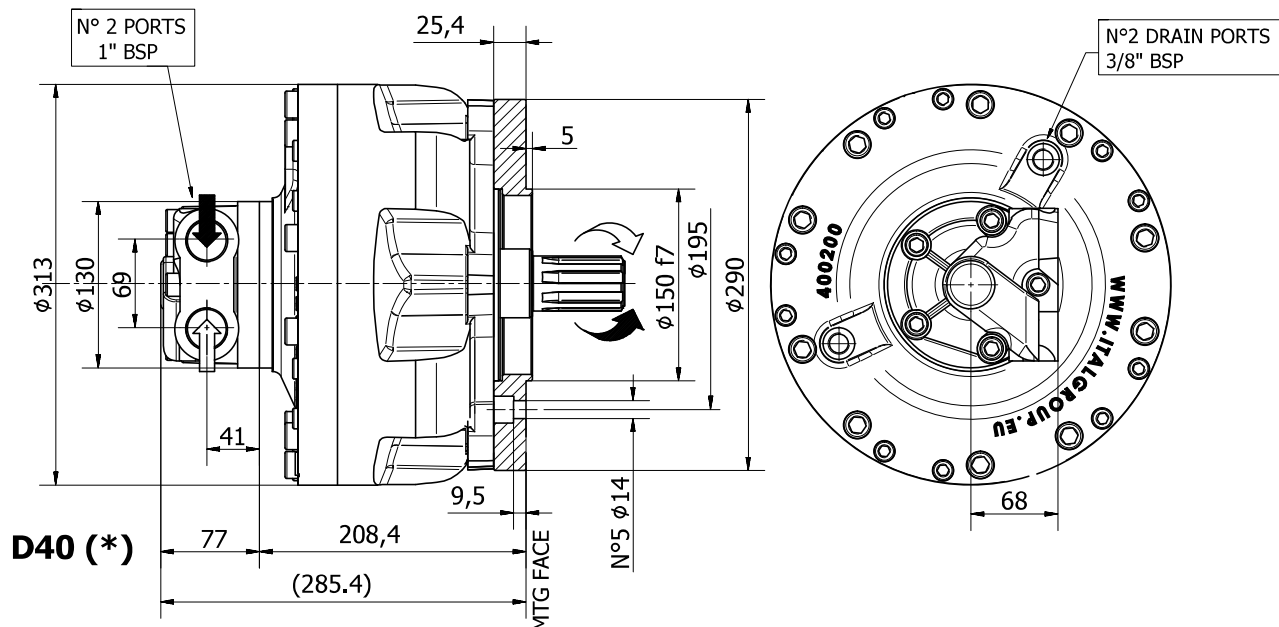


Available spline billet: SB15

A2



INSTALLATION DRAWING



TECHNICAL DATA

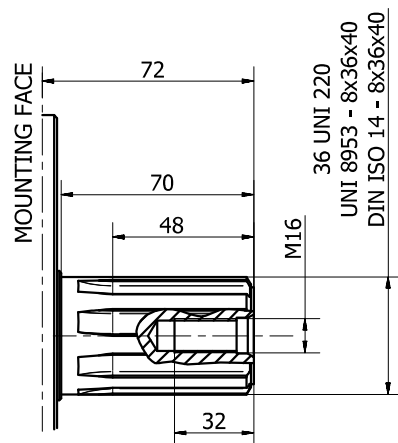
		200	250	300	350	400	500	600	650
DISPLACEMENT	[cc]	193	251	305	348	424	493	566	624
SPECIFIC TORQUE	[Nm/bar]	3,06	4,00	4,84	5,52	6,76	7,84	9,00	9,92
MAX. CONT. PRESSURE	[bar]	250	250	250	250	250	250	250	250
HYDROSTATIC TEST PRESSURE	[bar]	420	420	420	420	420	420	420	420
MAX. CONT. SPEED	[rpm]	1200	950	800	650	600	520	480	440
PEAK SPEED (***)	[rpm]	1500	1150	950	800	800	700	650	620
MAX. CONT. POWER (****)	[kW]	75	75	75	75	75	75	75	75
MAX. CONT. POWER WITH FLUSHING	[kW]	105	105	105	105	105	105	105	105
MAX. CASE PRESSURE	[bar]	6	6	6	6	6	6	6	6
DRY WEIGHT	[kg]	53	53	53	53	53	53	53	53
TEMPERATURE RANGE (**)	[°C]	-30÷70	-30÷70	-30÷70	-30÷70	-30÷70	-30÷70	-30÷70	-30÷70

- (*) The standard distributor (D40) is shown. Please refer to distributors section (pag. 82-83) for different distributor interfaces.
- (**) Please refer to the hydraulic fluid recommendations (pag. 8-9).
- (***) Do not exceed maximum continuous power with flushing (pag. 11).
- (****) For motor operation with a continuous duty cycle at maximum continuous power the flushing is usually required. For more information please contact our technical department.

The data specified into the catalogue are for product description purpose only and must not be interpreted as warranted characteristics in legal sense. Italgrou p S.r.l. reserves the right to implement modifications without notice. All partial or total reproduction and copy without written authorization of Italgrou p S.r.l. is strictly forbidden.

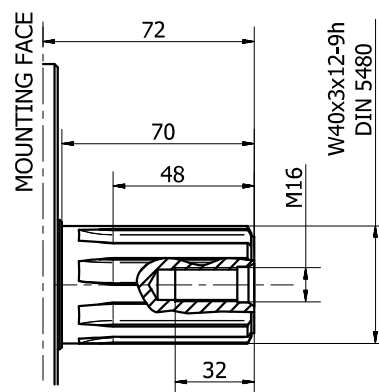
SHAFT CONFIGURATIONS

A0



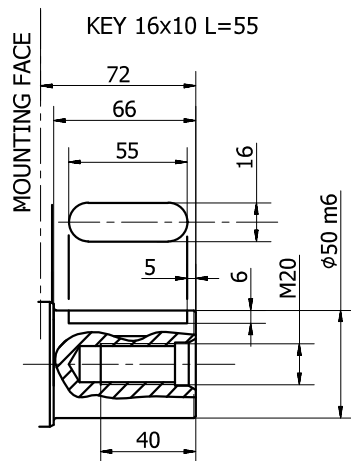
Available spline billet: **SB3**

A1

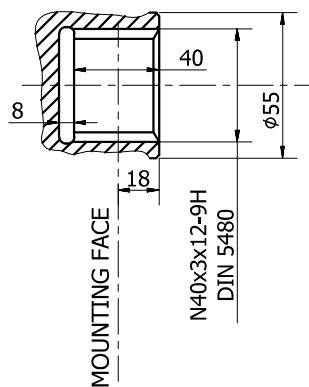


Available spline billet: **SB22**

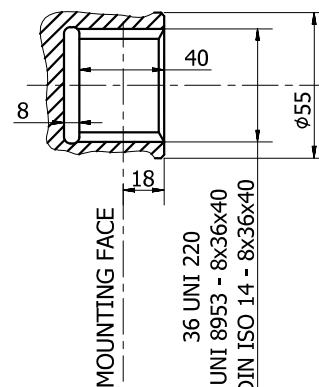
A2



A3

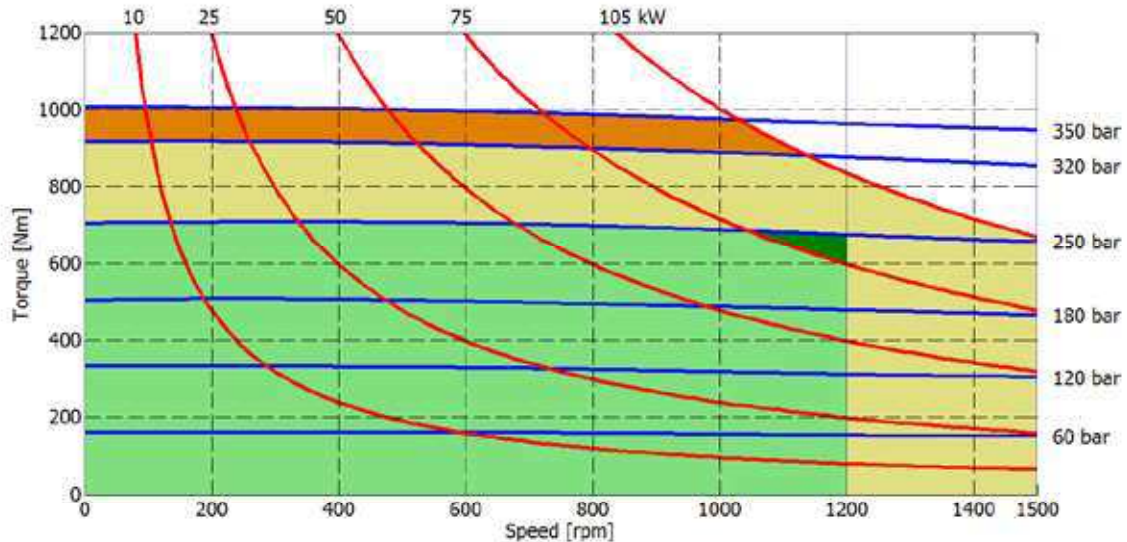


A31

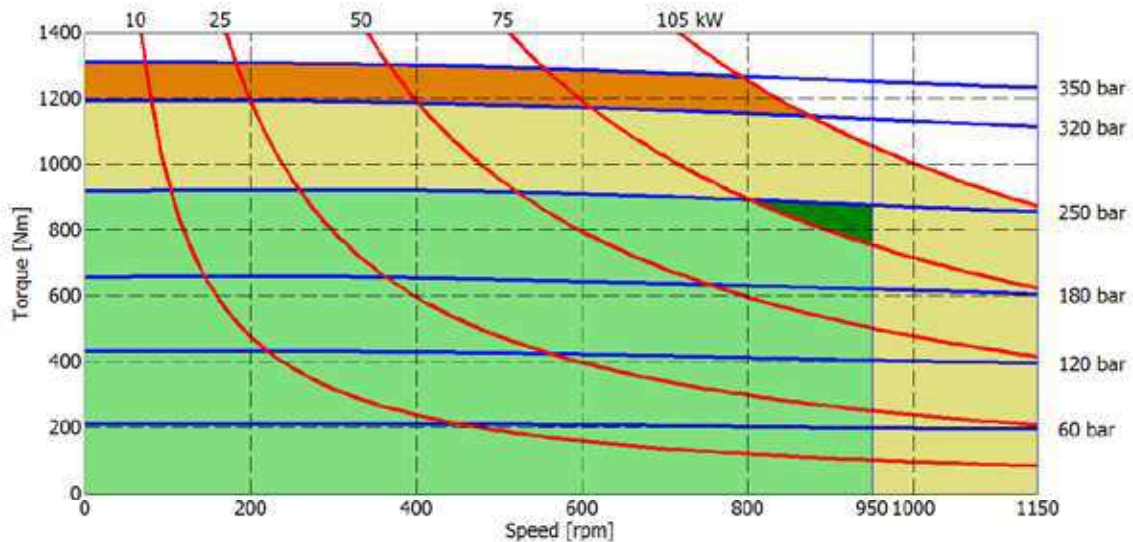


HC2- PERFORMANCE DIAGRAMS

200 cc



250 cc



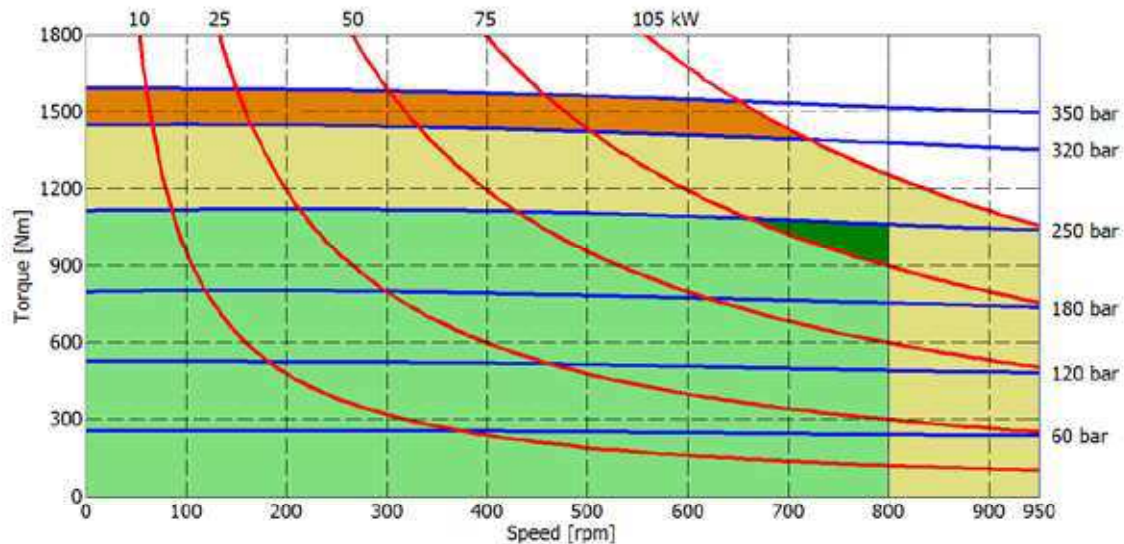
- Continuous operation
- Continuous operation with flushing or intermittent operation (see below for intermittent operation)
- Intermittent operation: permitted for a 15% of duty cycle, for 3 minutes maximum period
- Peak operation: permitted for very short periods (3-5 seconds every 10-15 minutes)

The above diagrams are referring to the hydraulic motor working with a fluid in ideal conditions (viscosity at 40 cSt). In case the working temperature increases and viscosity reach values under the recommended values (see hydraulic fluid recommendations) flushing must be performed or ISO oil grade must be changed. The working temperature must not overcome 70 °C.

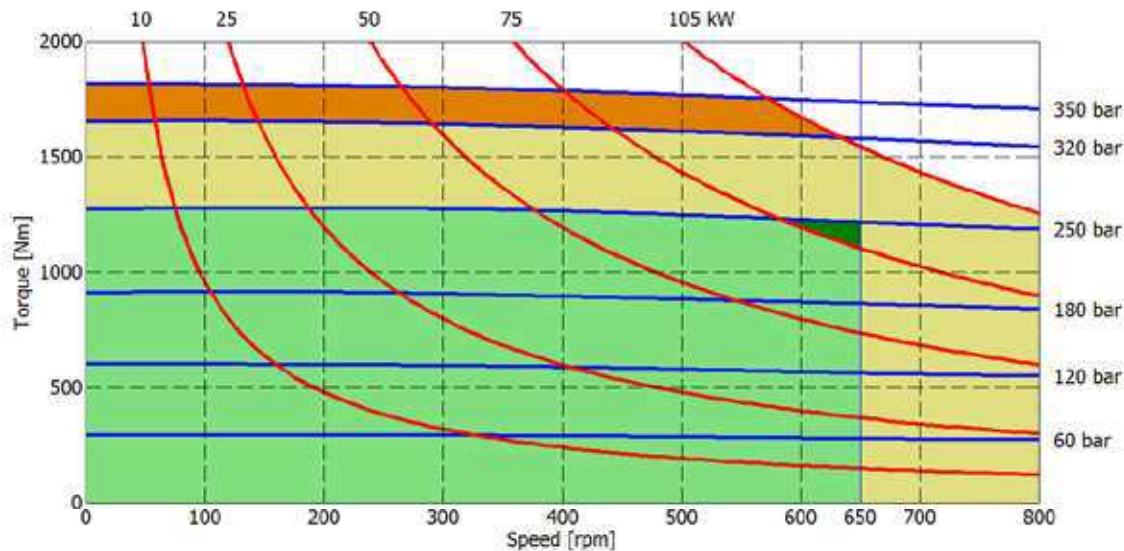
The data specified into the catalogue are for product description purpose only and must not be interpreted as warranted characteristics in legal sense. Italgrou S.r.l. reserves the right to implement modifications without notice. All partial or total reproduction and copy without written authorization of Italgrou S.r.l. is strictly forbidden.

HC2- PERFORMANCE DIAGRAMS

300 cc



350 cc



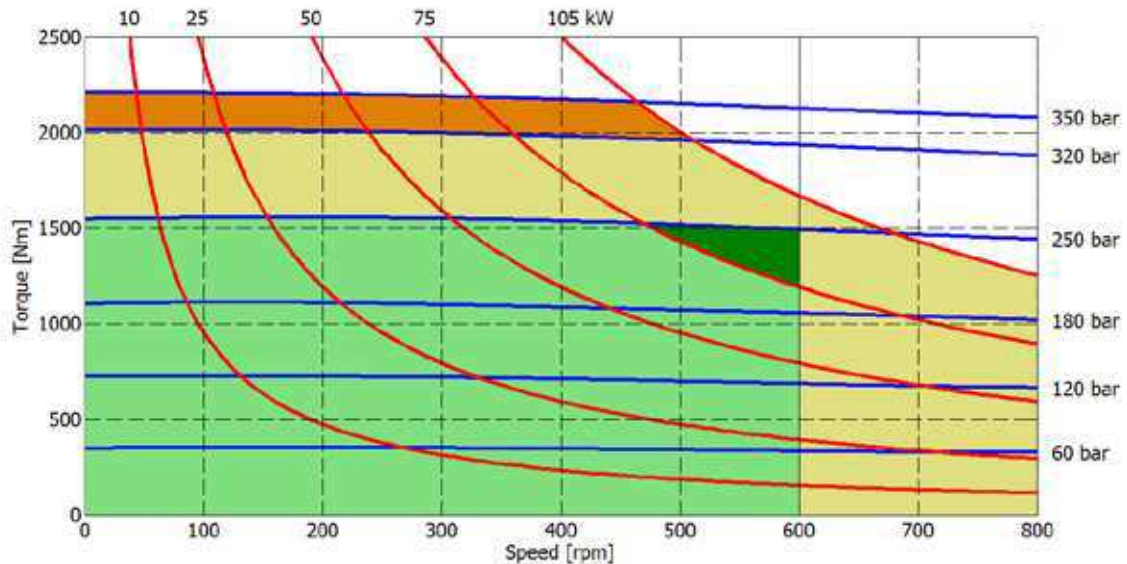
- Continuous operation
- Continuous operation with flushing or intermittent operation (see below for intermittent operation)
- Intermittent operation: permitted for a 15% of duty cycle, for 3 minutes maximum period
- Peak operation: permitted for very short periods (3-5 seconds every 10-15 minutes)

The above diagrams are referring to the hydraulic motor working with a fluid in ideal conditions (viscosity at 40 cSt). In case the working temperature increases and viscosity reach values under the recommended values (see hydraulic fluid recommendations) flushing must be performed or ISO oil grade must be changed. The working temperature must not overcome 70 °C.

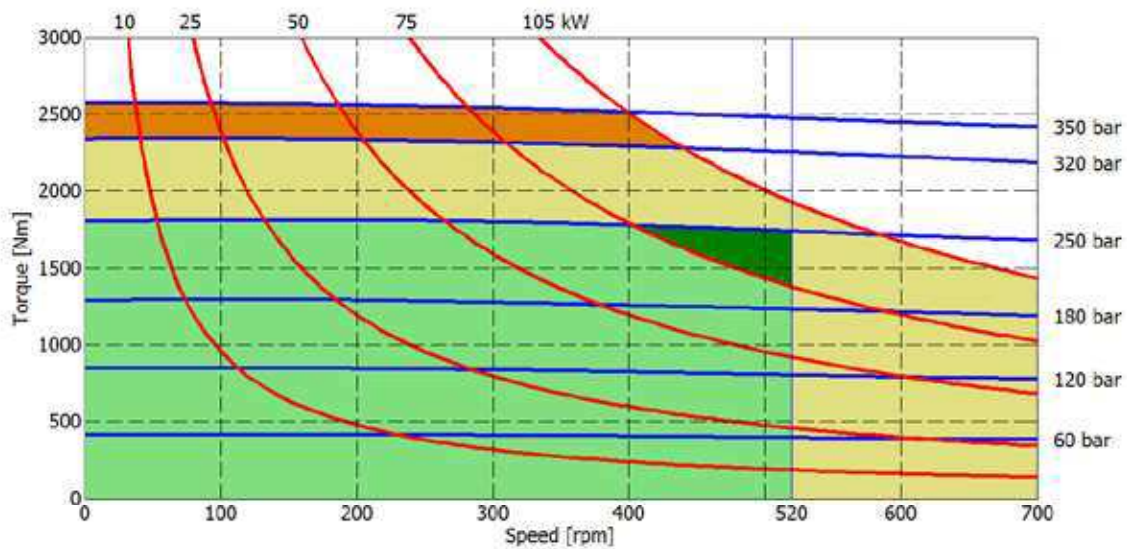
The data specified into the catalogue are for product description purpose only and must not be interpreted as warranted characteristics in legal sense. Italgroup S.r.l. reserves the right to implement modifications without notice. All partial or total reproduction and copy without written authorization of Italgroup S.r.l. is strictly forbidden.

HC2- PERFORMANCE DIAGRAMS

400 cc



500 cc



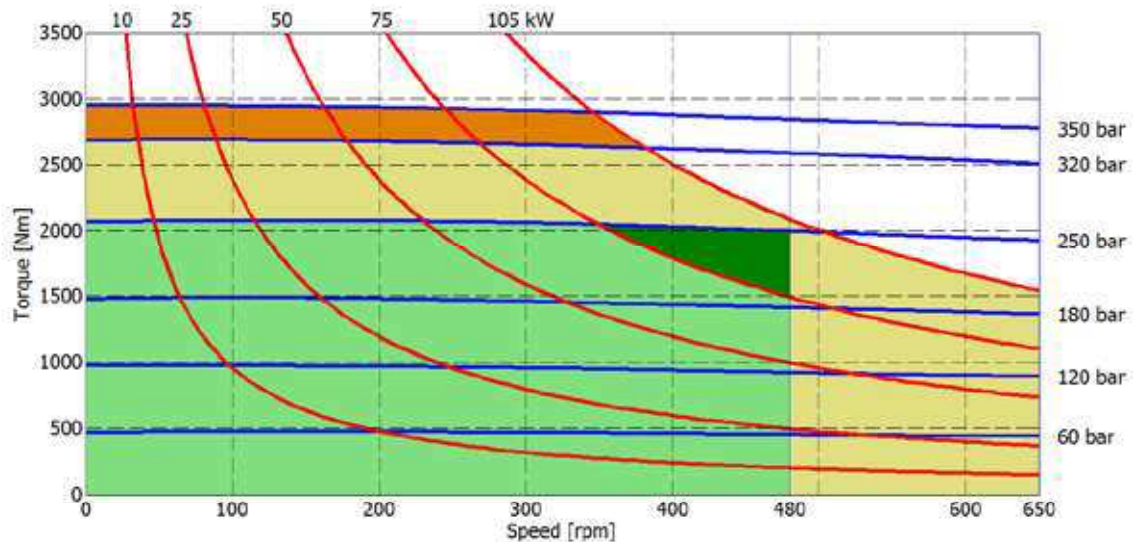
- Continuous operation
- Continuous operation with flushing or intermittent operation (see below for intermittent operation)
- Intermittent operation: permitted for a 15% of duty cycle, for 3 minutes maximum period
- Peak operation: permitted for very short periods (3-5 seconds every 10-15 minutes)

The above diagrams are referring to the hydraulic motor working with a fluid in ideal conditions (viscosity at 40 cSt). In case the working temperature increases and viscosity reach values under the recommended values (see hydraulic fluid recommendations) flushing must be performed or ISO oil grade must be changed. The working temperature must not overcome 70 °C.

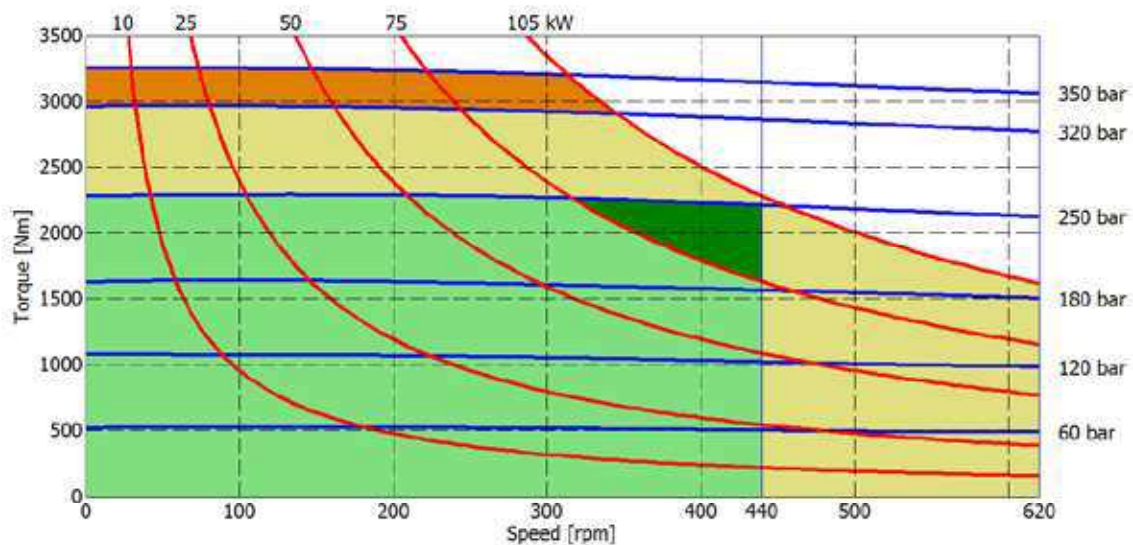
The data specified into the catalogue are for product description purpose only and must not be interpreted as warranted characteristics in legal sense. Italgrou S.r.l. reserves the right to implement modifications without notice. All partial or total reproduction and copy without written authorization of Italgrou S.r.l. is strictly forbidden.

HC2- PERFORMANCE DIAGRAMS

600 cc



650 cc

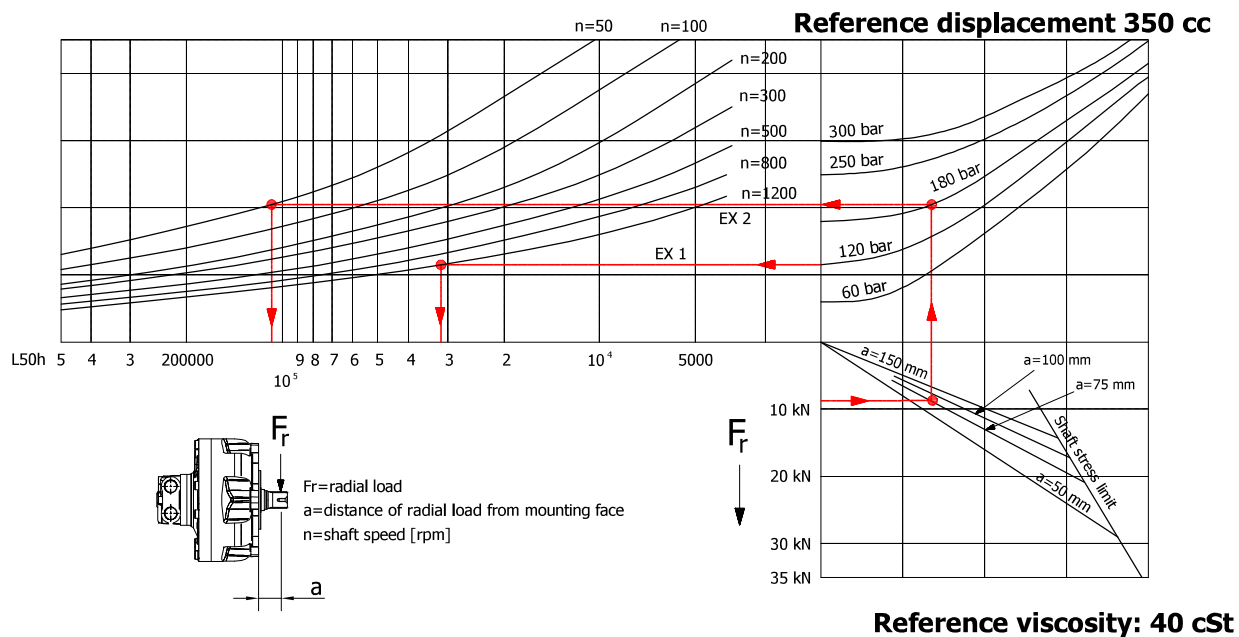


- Continuous operation
- Continuous operation with flushing or intermittent operation (see below for intermittent operation)
- Intermittent operation: permitted for a 15% of duty cycle, for 3 minutes maximum period
- Peak operation: permitted for very short periods (3-5 seconds every 10-15 minutes)

The above diagrams are referring to the hydraulic motor working with a fluid in ideal conditions (viscosity at 40 cSt). In case the working temperature increases and viscosity reach values under the recommended values (see hydraulic fluid recommendations) flushing must be performed or ISO oil grade must be changed. The working temperature must not overcome 70 °C.

The data specified into the catalogue are for product description purpose only and must not be interpreted as warranted characteristics in legal sense. Italgroup S.r.l. reserves the right to implement modifications without notice. All partial or total reproduction and copy without written authorization of Italgroup S.r.l. is strictly forbidden.

BEARING LIFE

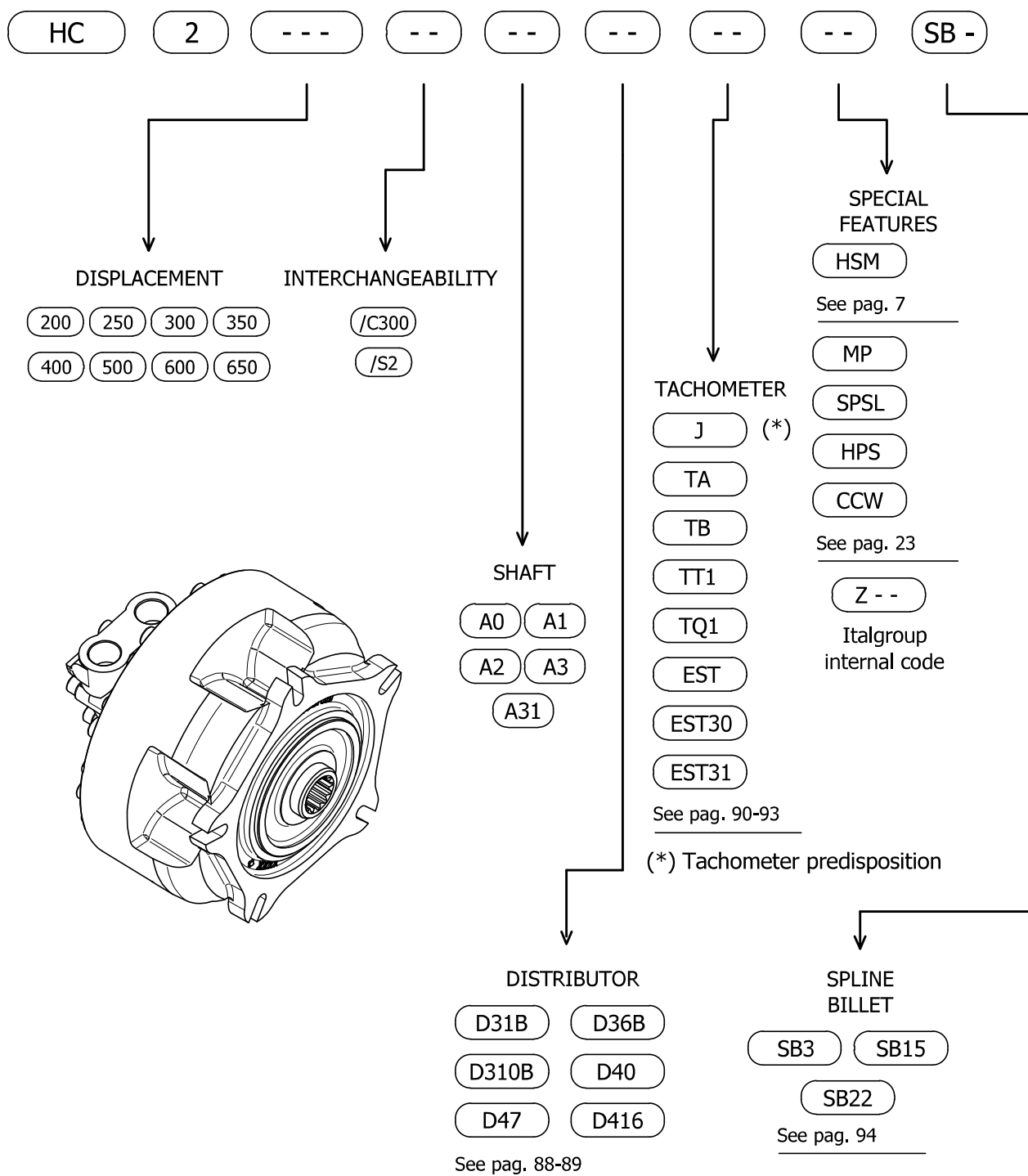


Example:

We suppose (EX1): $p=120$ [bar], $n=1200$ [rpm]; we obtain an average lifetime of 31000 [h].

If we suppose (EX2): $F_r=9$ [kN], $a=75$ [mm], $n=50$ [rpm] and $p=180$ [bar] we obtain an average lifetime of 105000 [h].

HC2- ORDERING CODE



The data specified into the catalogue are for product description purpose only and must not be interpreted as warranted characteristics in legal sense. Italgroup S.r.l. reserves the right to implement modifications without notice. All partial or total reproduction and copy without written authorization of Italgroup S.r.l. is strictly forbidden.