

---

**ITALGROUP SRL**  
**HCD SERIES - HCD05**

---

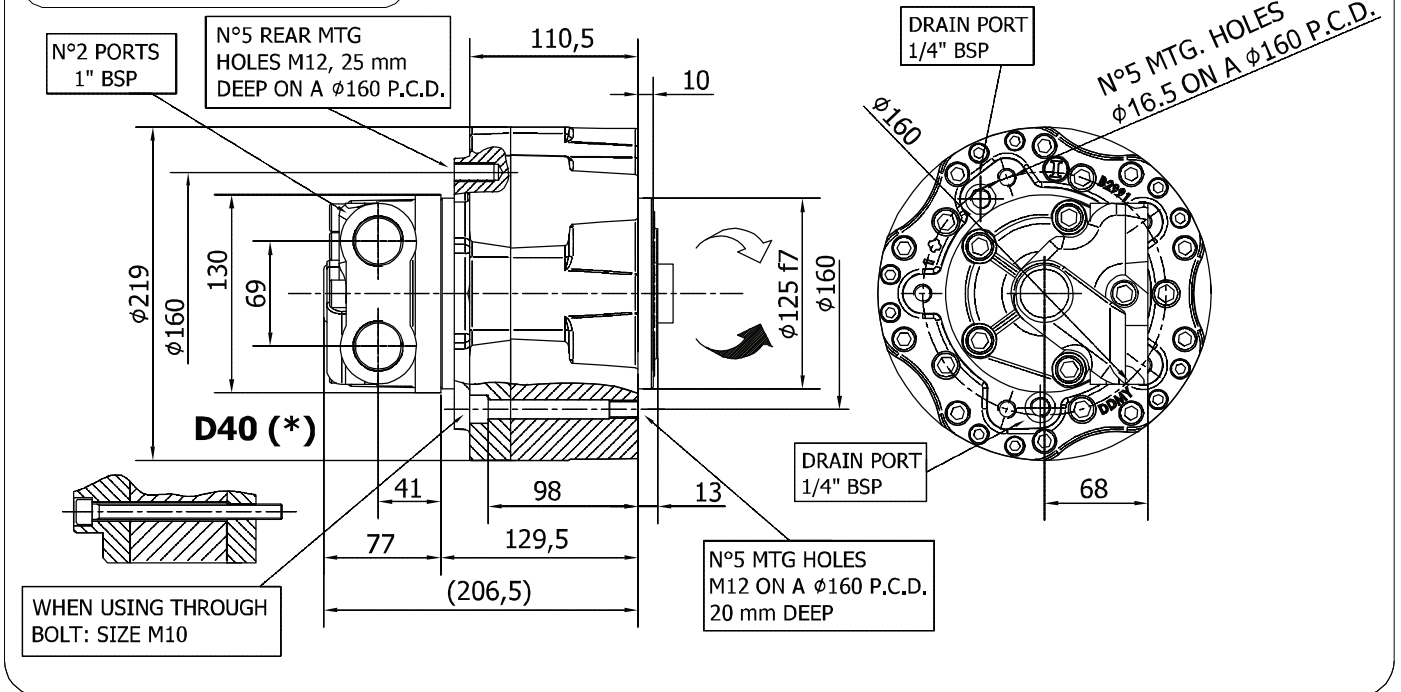
**GENERAL CATALOGUE**

---

**INDEX - HCD05**

<u>HCD05 - INSTALLATION DRAWING</u>	Pag	28 - 29
<u>HCD05 - PERFORMANCE DIAGRAMS</u>	"	30 - 34
<u>ORDERING CODE</u>	"	35

**INSTALLATION DRAWING**



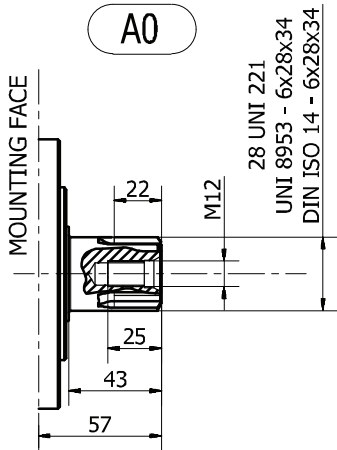
**TECHNICAL DATA**

		<b>40</b>	<b>60</b>	<b>75</b>	<b>90</b>	<b>110</b>	<b>130</b>	<b>150</b>	<b>175</b>
DISPLACEMENT	[cc]	40	60	74	91	115	129	151	166
SPECIFIC TORQUE	[Nm/bar]	0,62	0,97	1,20	1,40	1,84	2,05	2,40	2,65
MAX. CONT. PRESSURE	[bar]	300	300	300	300	300	300	275	275
HYDROSTATIC TEST PRESSURE	[bar]	450	450	450	450	450	450	420	420
MAX. CONT. SPEED	[rpm]	1500	1400	1400	1300	1300	1300	1200	1200
PEAK SPEED (***)	[rpm]	2000	1900	1900	1600	1600	1600	1500	1500
MAX. CONT. POWER (****)	[kW]	26	37	40	40	40	40	40	40
PEAK POWER	[kW]	52	62	62	62	62	62	62	62
MAX. CASE PRESSURE	[bar]	10	10	10	10	10	10	10	10
DRY WEIGHT	[kg]	30	30	30	30	30	30	30	30
TEMPERATURE RANGE (**)	[°C]	-30÷70	-30÷70	-30÷70	-30÷70	-30÷70	-30÷70	-30÷70	-30÷70

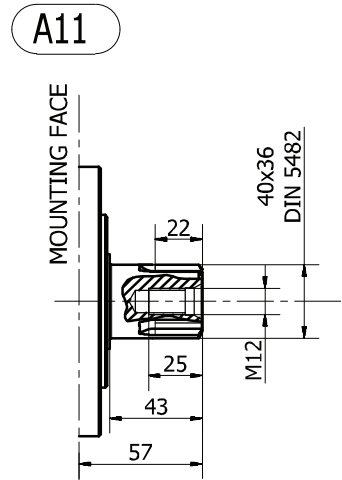
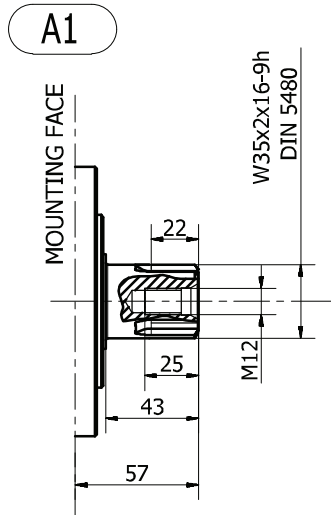
- (\*) The standard distributor (D40) is shown. Please refer to distributors section (pag. 82-83) for differents distributor interfaces.
- (\*\*) Please refer to the hydraulic fluid recommendations (pag. 8-9).
- (\*\*\*) Do not exceed maximum continuous power with flushing (pag. 11).
- (\*\*\*\*) For motor operation with a continuous duty cycle at maximum continuous power the flushing is usually required. For more information please contact our technical department.

The data specified into the catalogue are for product description purpose only and must not be interpreted as warranted characteristics in legal sense. Italgrou S.r.l. reserves the right to implement modifications without notice. All partial or total reproduction and copy without written authorization of Italgrou S.r.l. is strictly forbidden.

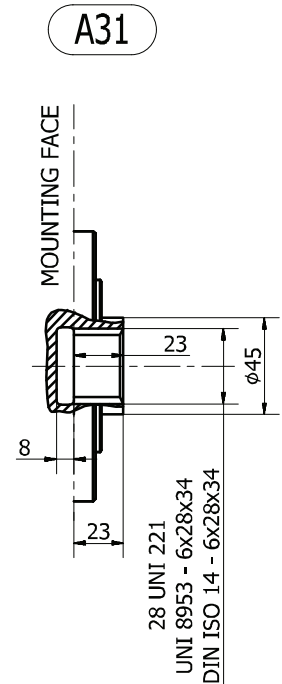
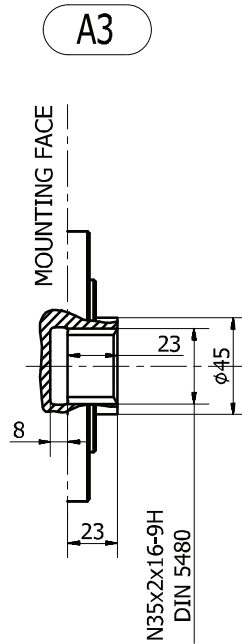
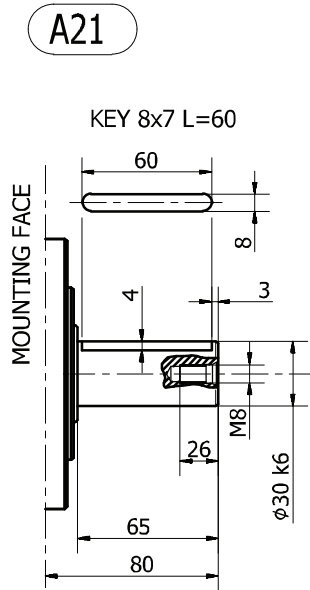
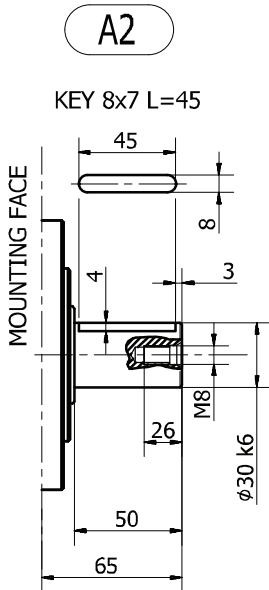
SHAFT CONFIGURATIONS



Available spline billet: **SB14**

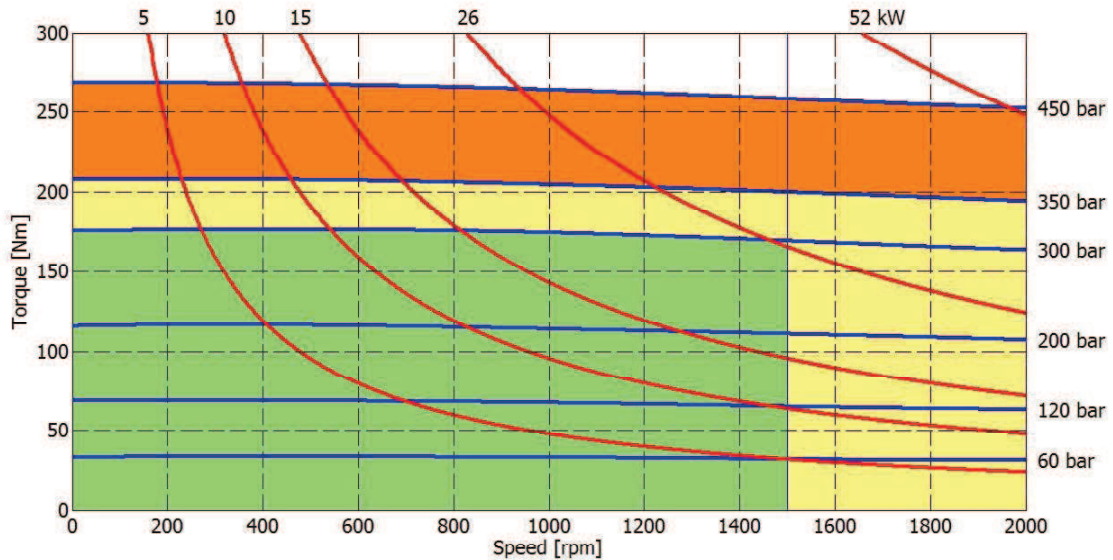


Available spline billet: **SB13**

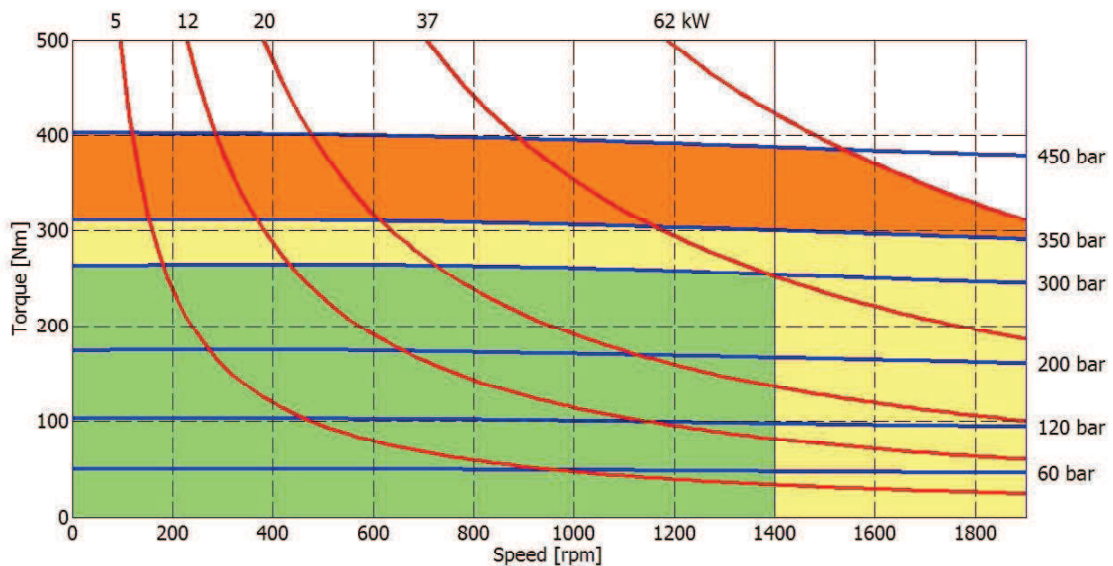


## HCD05- PERFORMANCE DIAGRAMS

### 40 cc



### 60 cc



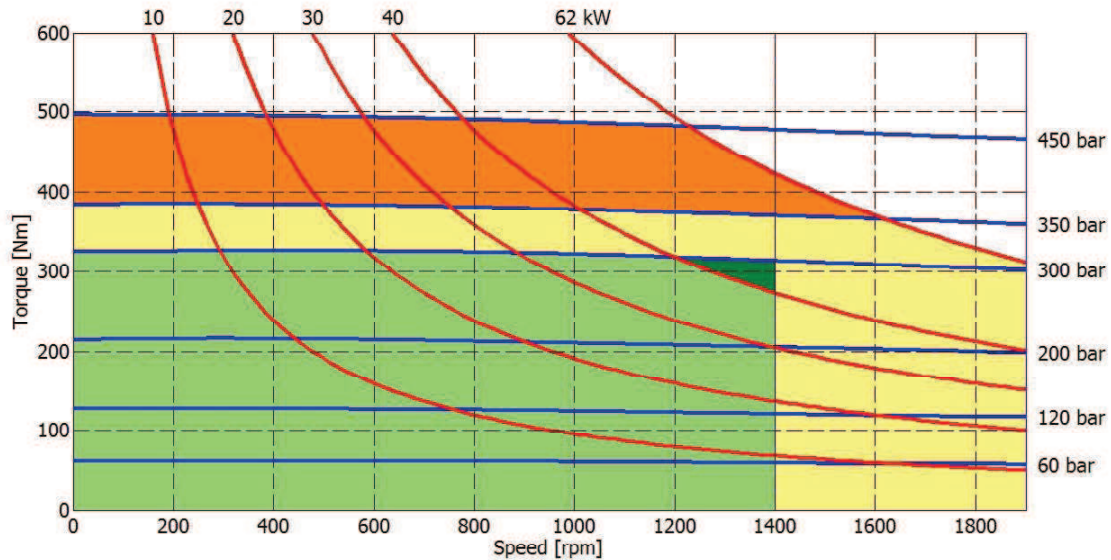
- Continuous operation
- Continuous operation with flushing or intermittent operation (see below for intermittent operation)
- Intermittent operation: permitted for a 15% of duty cycle, for 3 minutes maximum period
- Peak operation: permitted for very short periods (3-5 seconds every 10-15 minutes)

**The above diagrams are referring to the hydraulic motor working with a fluid in ideal conditions (viscosity at 40 cSt).** In case the working temperature increases and viscosity reach values under the recommended values (see hydraulic fluid recommendations) flushing must be performed or ISO oil grade must be changed. The working temperature must not overcome 70 °C.

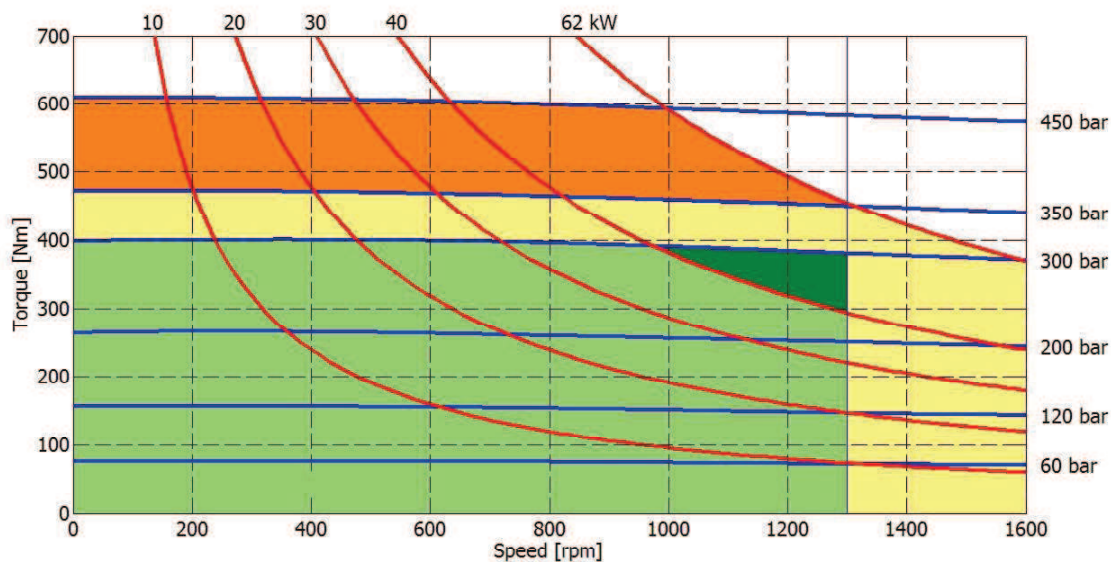
The data specified into the catalogue are for product description purpose only and must not be interpreted as warranted characteristics in legal sense. Italgroup S.r.l. reserves the right to implement modifications without notice. All partial or total reproduction and copy without written authorization of Italgroup S.r.l. is strictly forbidden.

# HCD05- PERFORMANCE DIAGRAMS

## 75 cc



## 90 cc



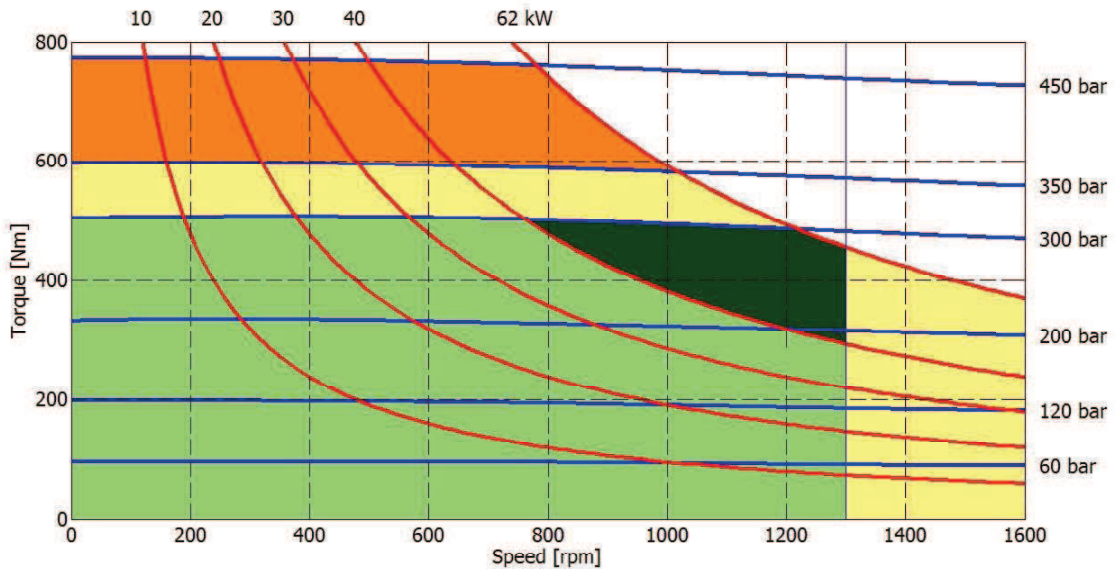
- Continuous operation
- Continuous operation with flushing or intermittent operation (see below for intermittent operation)
- Intermittent operation: permitted for a 15% of duty cycle, for 3 minutes maximum period
- Peak operation: permitted for very short periods (3-5 seconds every 10-15 minutes)

**The above diagrams are referring to the hydraulic motor working with a fluid in ideal conditions (viscosity at 40 cSt).** In case the working temperature increases and viscosity reach values under the recommended values (see hydraulic fluid recommendations) flushing must be performed or ISO oil grade must be changed. The working temperature must not overcome 70 °C.

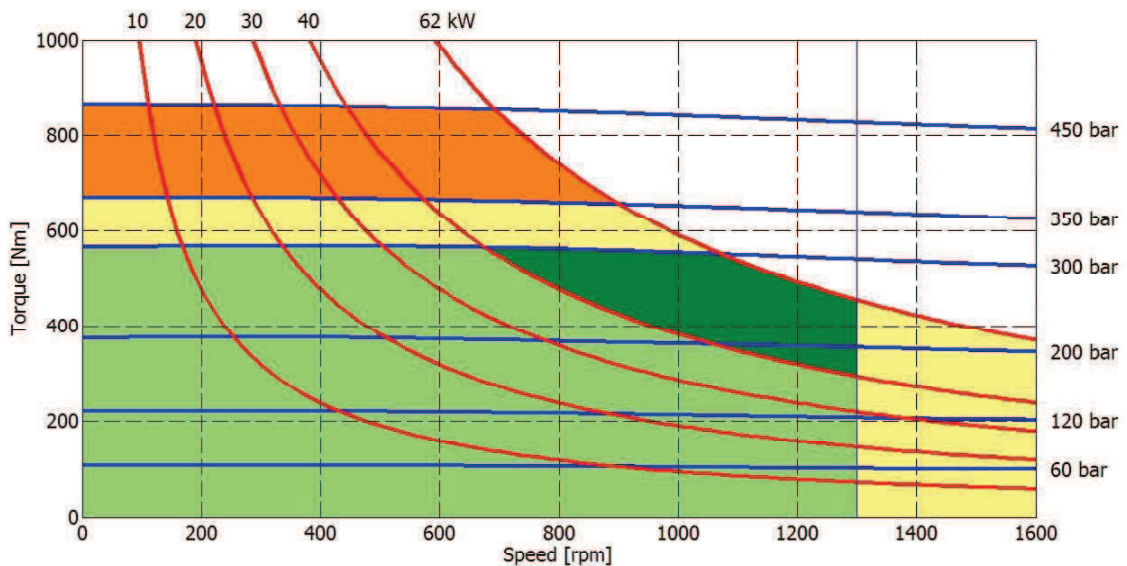
The data specified into the catalogue are for product description purpose only and must not be interpreted as warranted characteristics in legal sense. Italgroup S.r.l. reserves the right to implement modifications without notice. All partial or total reproduction and copy without written authorization of Italgroup S.r.l. is strictly forbidden.

**HCD05- PERFORMANCE DIAGRAMS**

**110 cc**



**130 cc**



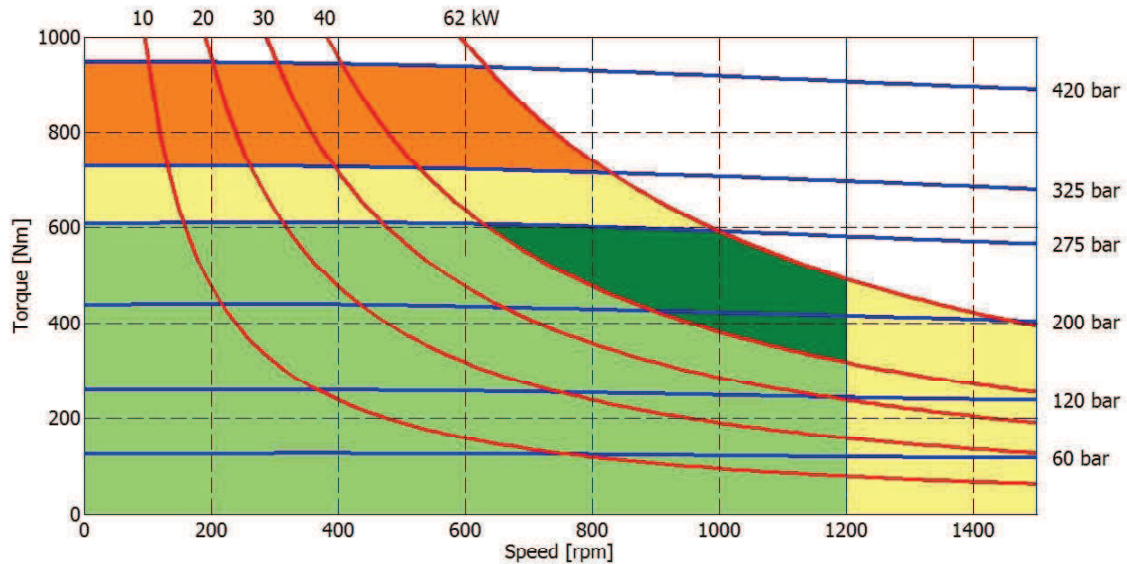
- Continuous operation
- Continuous operation with flushing or intermittent operation (see below for intermittent operation)
- Intermittent operation: permitted for a 15% of duty cycle, for 3 minutes maximum period
- Peak operation: permitted for very short periods (3-5 seconds every 10-15 minutes)

**The above diagrams are referring to the hydraulic motor working with a fluid in ideal conditions (viscosity at 40 cSt).** In case the working temperature increases and viscosity reach values under the recommended values (see hydraulic fluid recommendations) flushing must be performed or ISO oil grade must be changed. The working temperature must not overcome 70 °C.

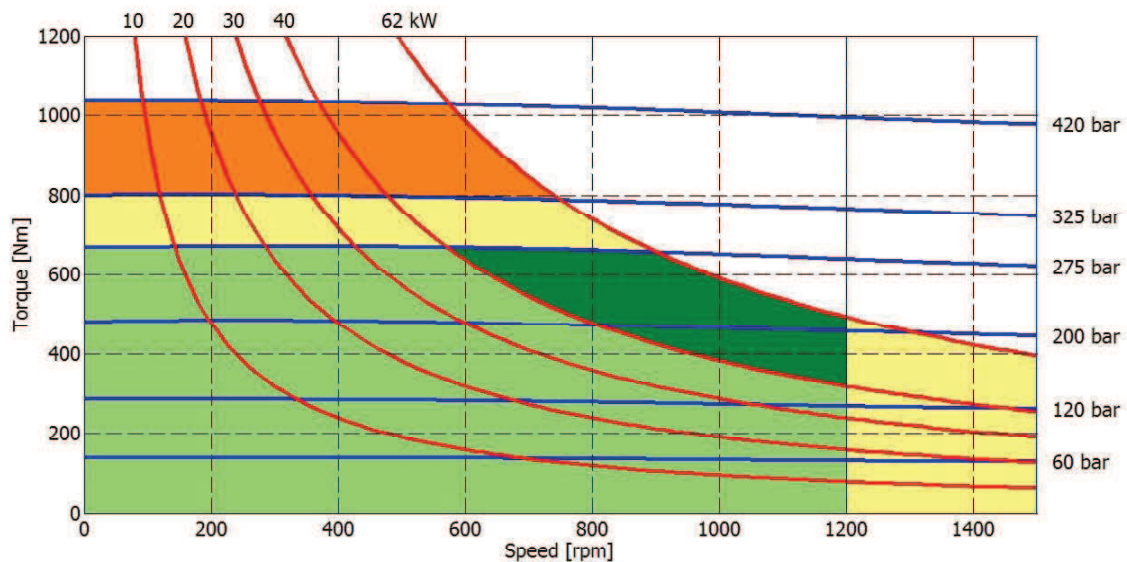
The data specified into the catalogue are for product description purpose only and must not be interpreted as warranted characteristics in legal sense. Italgroup S.r.l. reserves the right to implement modifications without notice. All partial or total reproduction and copy without written authorization of Italgroup S.r.l. is strictly forbidden.

## HCD05- PERFORMANCE DIAGRAMS

### 150 cc



### 175 cc



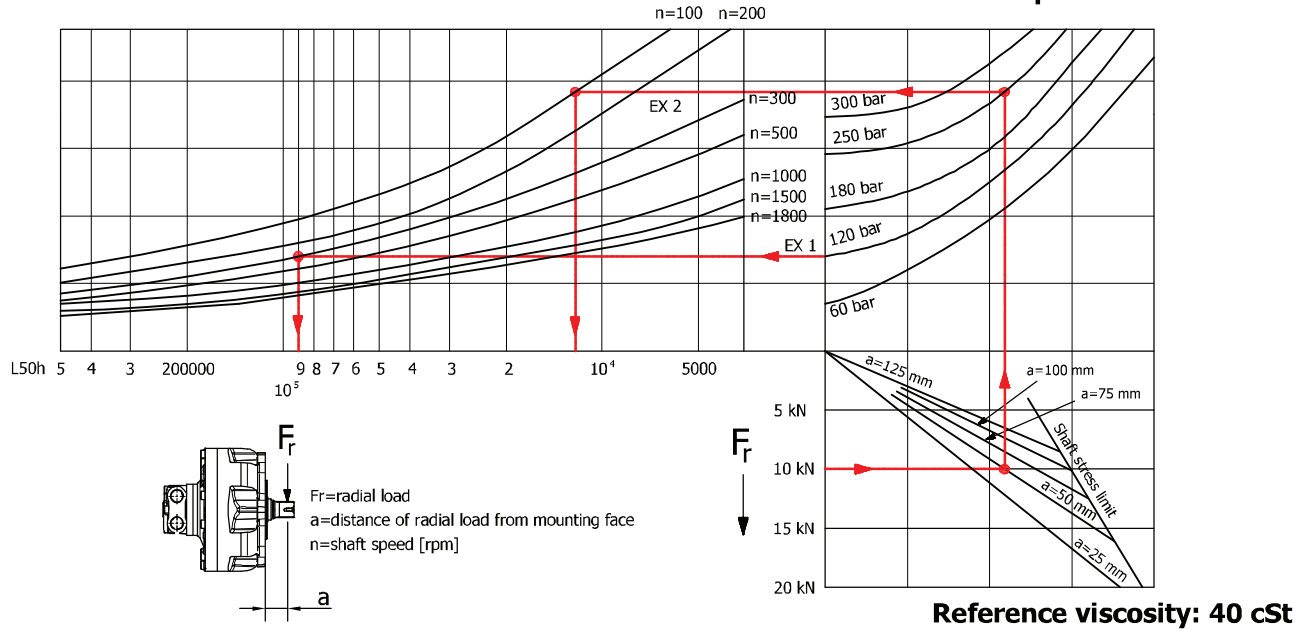
- Continuous operation
- Continuous operation with flushing or intermittent operation (see below for intermittent operation)
- Intermittent operation: permitted for a 15% of duty cycle, for 3 minutes maximum period
- Peak operation: permitted for very short periods (3-5 seconds every 10-15 minutes)

**The above diagrams are referring to the hydraulic motor working with a fluid in ideal conditions (viscosity at 40 cSt).** In case the working temperature increases and viscosity reach values under the recommended values (see hydraulic fluid recommendations) flushing must be performed or ISO oil grade must be changed. The working temperature must not overcome 70 °C.

The data specified into the catalogue are for product description purpose only and must not be interpreted as warranted characteristics in legal sense. Italgroup S.r.l. reserves the right to implement modifications without notice. All partial or total reproduction and copy without written authorization of Italgroup S.r.l. is strictly forbidden.

**BEARING LIFE**

Reference displacement 110 cc



Reference viscosity: 40 cSt

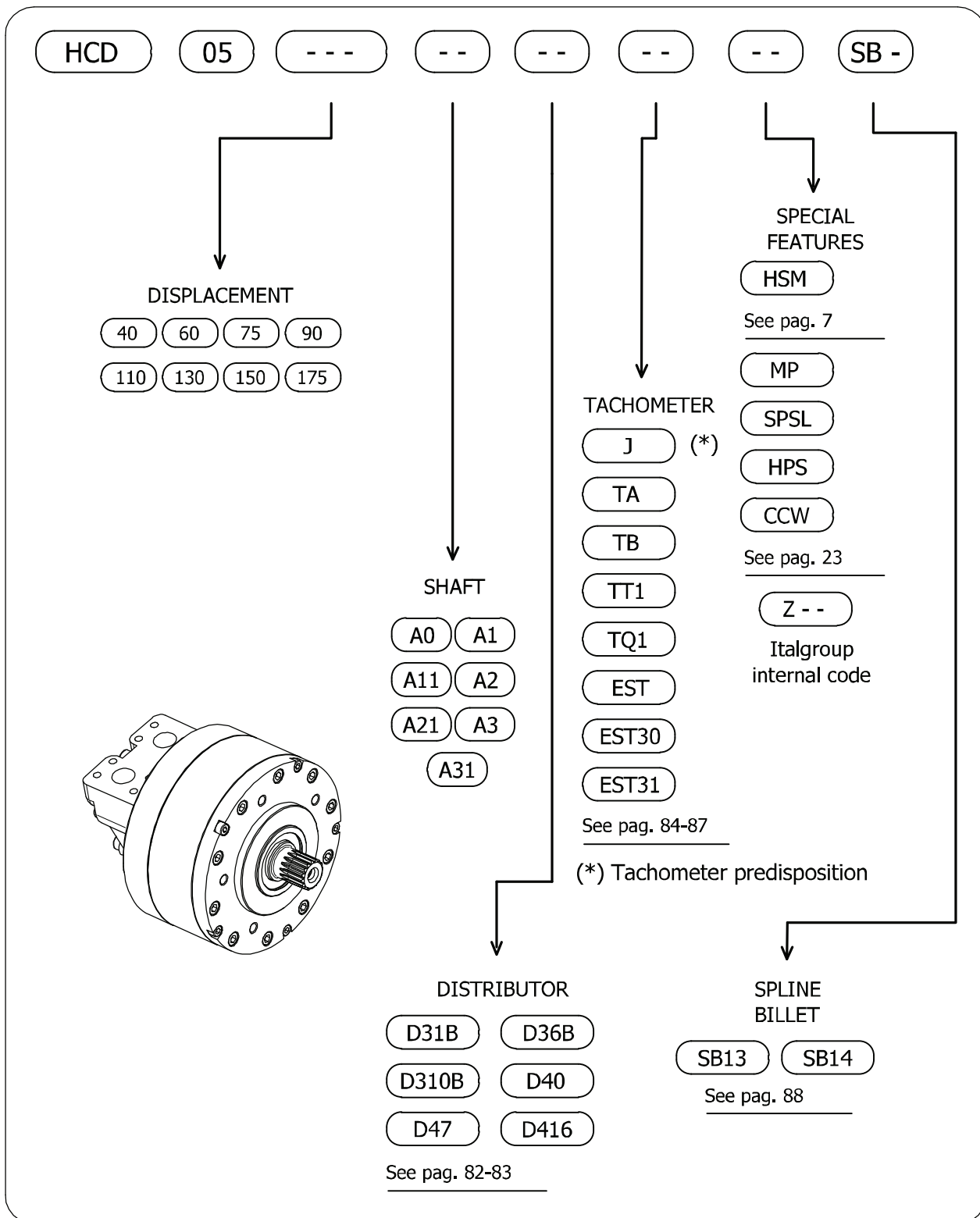
**Example:**

We suppose (EX1):  $p=120$  [bar],  $n=300$  [rpm]; we obtain an average lifetime of 90000 [h].  
If we suppose (EX2):  $F_r=10$  [kN],  $a=50$  [mm],  $n=100$  [rpm] and  $p=250$  [bar] we obtain an average lifetime of 11000 [h].

The data specified into the catalogue are for product description purpose only and must not be interpreted as warranted characteristics in legal sense. Italgroup S.r.l. reserves the right to implement modifications without notice. All partial or total reproduction and copy without written authorization of Italgroup S.r.l. is strictly forbidden.



# HCD05 - ORDERING CODE



The data specified into the catalogue are for product description purpose only and must not be interpreted as warranted characteristics in legal sense. Italgroup S.r.l. reserves the right to implement modifications without notice. All partial or total reproduction and copy without written authorization of Italgroup S.r.l. is strictly forbidden.