
ITALGROUP SRL
IAM SERIES - IAM H55

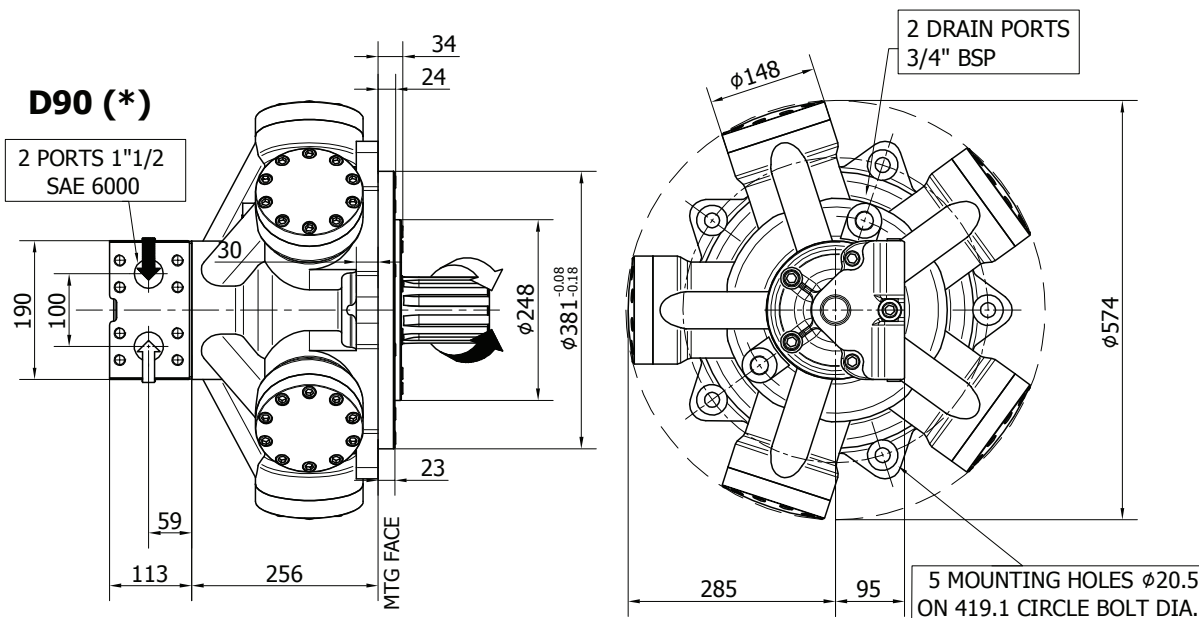
GENERAL CATALOGUE

INDEX - IAM H55

<u>IAM H55 - INSTALLATION DRAWINGS</u>	Pag	140 - 141
<u>IAM H55/C - INSTALLATION DRAWINGS</u>	"	142 - 143
<u>IAM H55 - ORDERING CODE</u>	"	144 - 146
<u>IAM H55 - ORDERING CODE</u>	"	147

INSTALLATION DRAWING

Available distributor flange: **FL7**
for S04, refer to page 187 (distributor fitting D90)



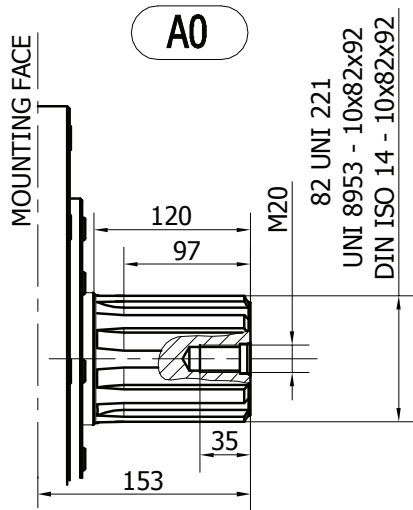
TECHNICAL DATA

		2200	2500	2800	3000
DISPLACEMENT	[cc]	2126	2525	2807	2983
SPECIFIC TORQUE	[Nm/bar]	33.8	40.2	44.7	48.2
MAX. CONT. PRESSURE	[bar]	250	250	250	250
HYDROSTATIC TEST PRES- SURE	[bar]	420	420	420	420
MAX. CONT. SPEED	[rpm]	240	240	240	230
PEAK SPEED (***)	[rpm]	280	280	280	270
MAX. CONT. POWER (****)	[kW]	120	120	120	120
MAX. POWER	[kW]	170	170	170	170
MAX. CASE PRESSURE	[bar]	6	6	6	6
DRY WEIGHT	[kg]	203	203	203	203
TEMPERATURE RANGE (**)	[°C]	-30÷70	-30÷70	-30÷70	-30÷70

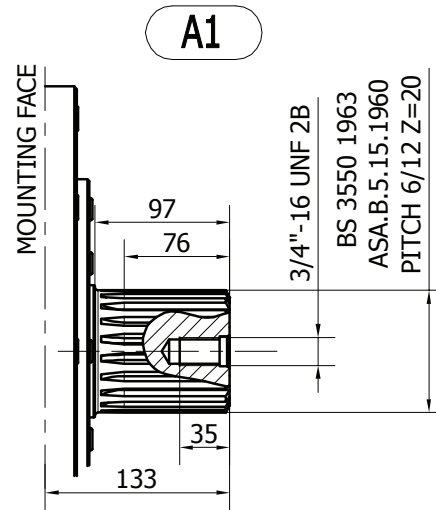
- (*) The standard distributor (D90) is shown. Please refer to distributors section (pag. 176-177) for different distributor interfaces.
- (**) Please refer to the hydraulic fluid recommendations (pag. 10-11).
- (***) Do not exceed maximum power (see pag. 13).
- (****) For motor operation with a continuous duty cycle at maximum continuous power the flushing is usually required. For more information please contact our technical department.

The data specified into the catalogue are for product description purpose only and must not be interpreted as warranted characteristics in legal sense. Italgrou S.r.l. reserves the right to implement modifications without notice. All partial or total reproduction and copy without written authorization of Italgrou S.r.l. is strictly forbidden.

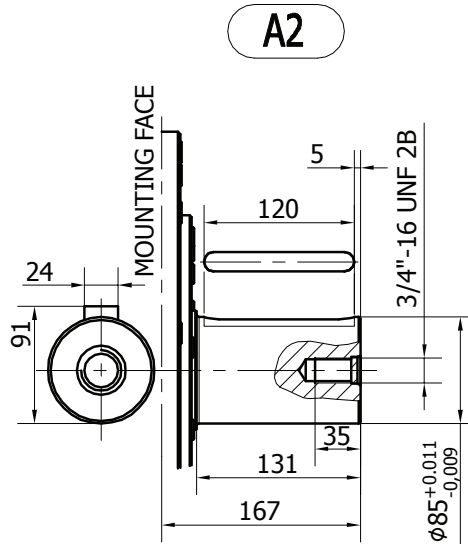
SHAFT CONFIGURATIONS



Available spline billet: **SB9**

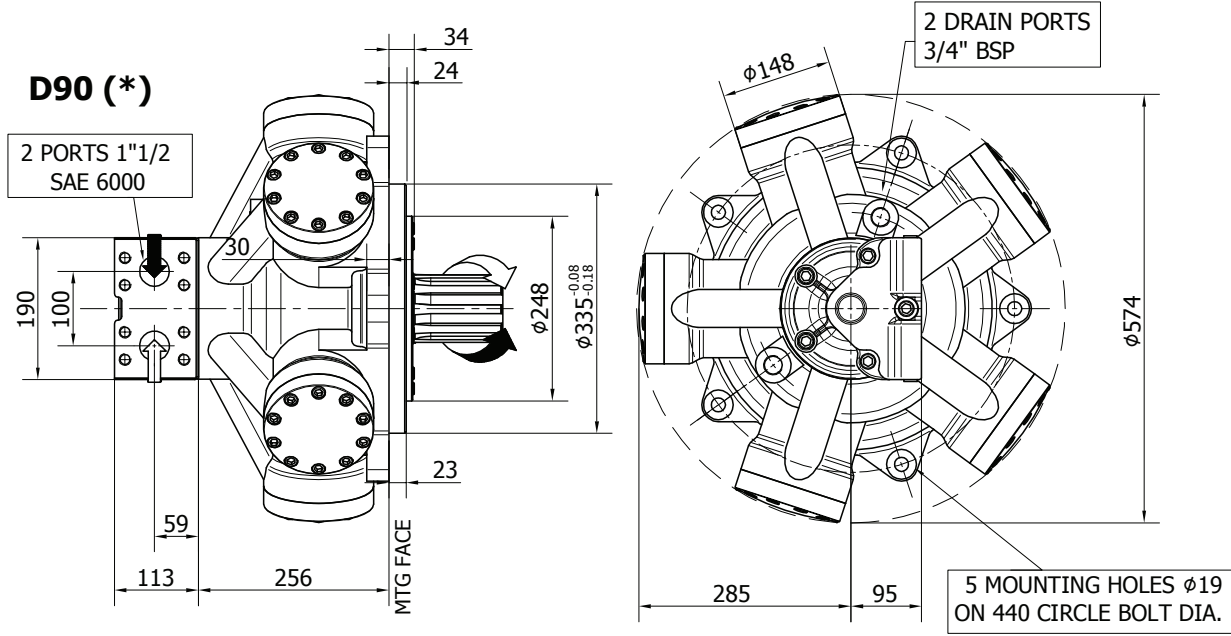


Available spline billet: **SB10**



INSTALLATION DRAWING

Available distributor flange: **FL10**
refer to page 185 (distributor fitting D75)



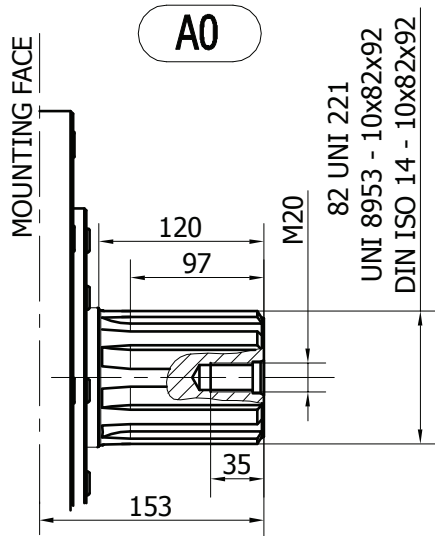
TECHNICAL DATA

		2200	2500	2800	3000
DISPLACEMENT	[cc]	2126	2525	2807	2983
SPECIFIC TORQUE	[Nm/bar]	33.8	40.2	44.7	48.2
MAX. CONT. PRESSURE	[bar]	250	250	250	250
HYDROSTATIC TEST PRES-SURE	[bar]	420	420	420	420
MAX. CONT. SPEED	[rpm]	240	240	240	230
PEAK SPEED (***)	[rpm]	280	280	280	270
MAX. CONT. POWER (****)	[kW]	120	120	120	120
MAX. POWER	[kW]	170	170	170	170
MAX. CASE PRESSURE	[bar]	6	6	6	6
DRY WEIGHT	[kg]	203	203	203	203
TEMPERATURE RANGE (**)	[°C]	-30÷70	-30÷70	-30÷70	-30÷70

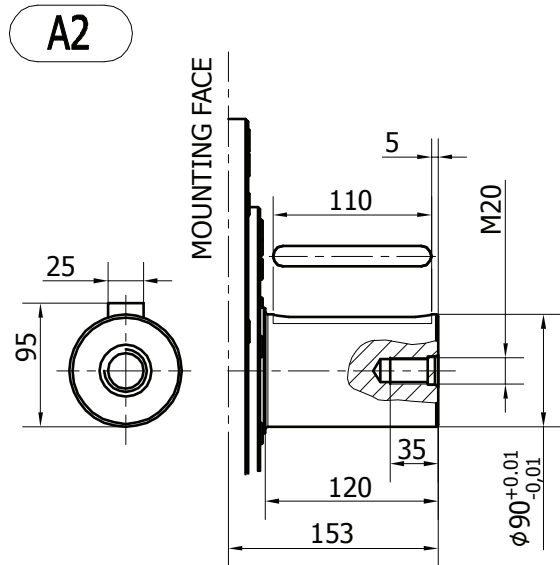
- (*) The standard distributor (D90) is shown. Please refer to distributors section (pag. 176-177) for different distributor interfaces.
- (**) Please refer to the hydraulic fluid recommendations (pag. 10-11).
- (***) Do not exceed maximum power (see pag. 13).
- (****) For motor operation with a continuous duty cycle at maximum continuous power the flushing is usually required. For more information please contact our technical department.

The data specified into the catalogue are for product description purpose only and must not be interpreted as warranted characteristics in legal sense. Italgrou S.r.l. reserves the right to implement modifications without notice. All partial or total reproduction and copy without written authorization of Italgrou S.r.l. is strictly forbidden.

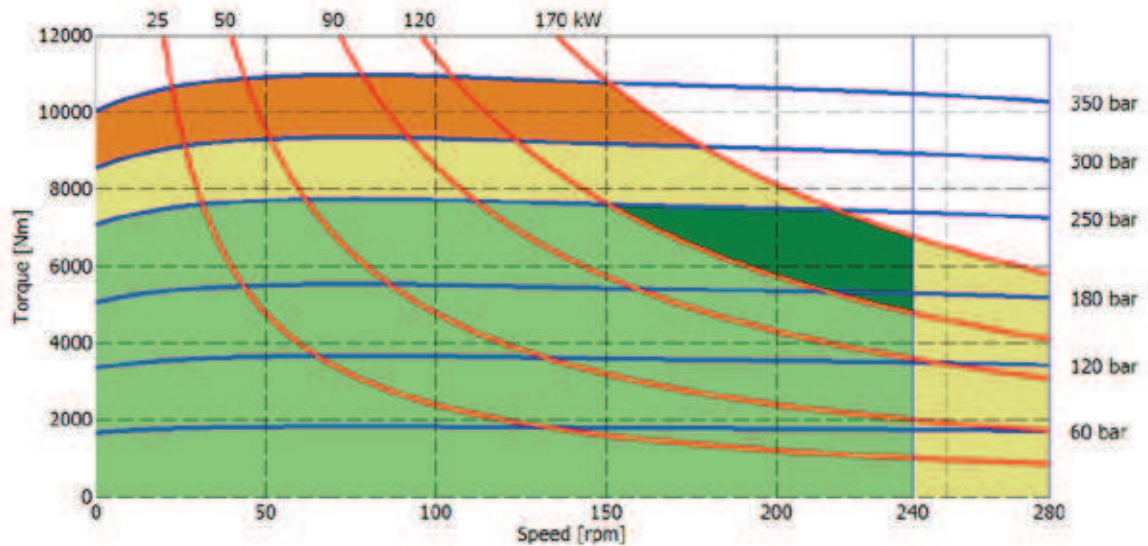
SHAFT CONFIGURATIONS



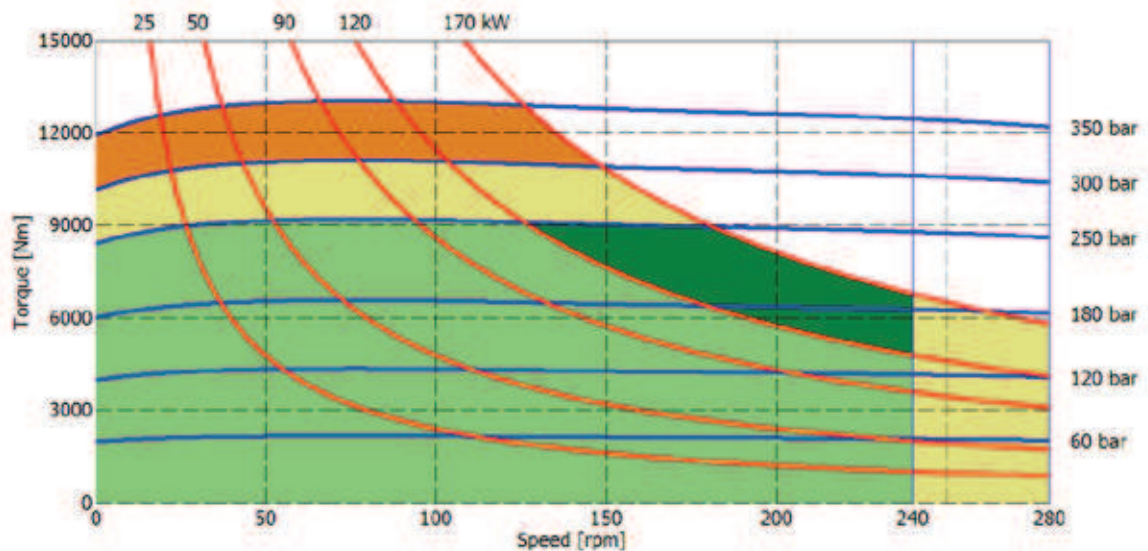
Available spline billet: **SB9**



2200 cc



2500 cc



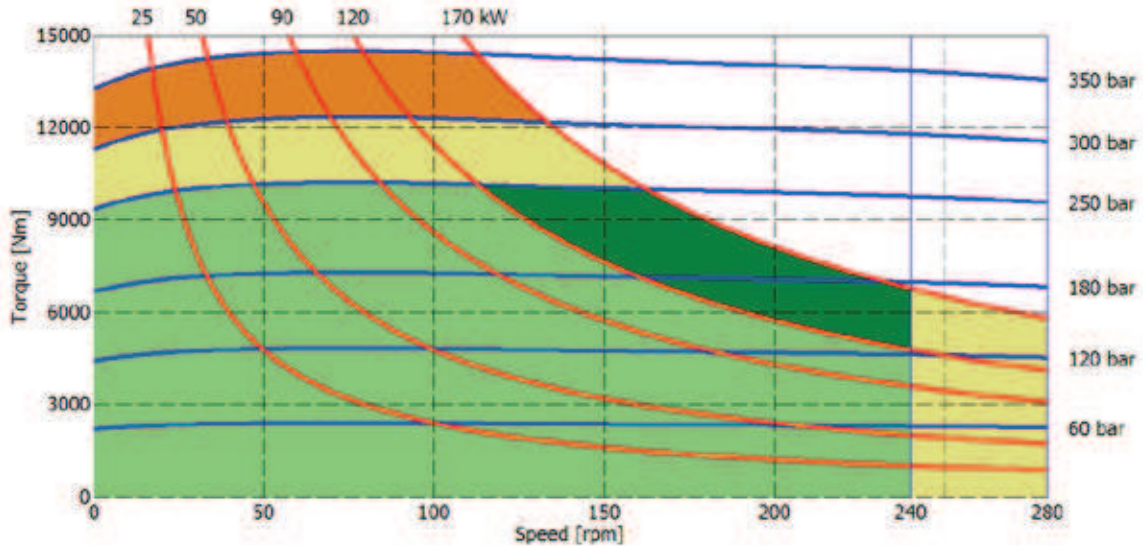
- Continuous operation
- Continuous operation with flushing or intermittent operation (see below for intermittent operation)
- Intermittent operation: permitted for a 15% of duty cycle, for 3 minutes maximum period
- Peak operation: permitted for very short periods (3-5 seconds every 10-15 minutes)

The above diagrams are referring to the hydraulic motor working with a fluid in ideal conditions (viscosity at 40 cSt). In case the working temperature increases and viscosity reach values under the recommended values (see hydraulic fluid recommendations) flushing must be performed or ISO oil grade must be changed. The working temperature must not overcome 70 °C.

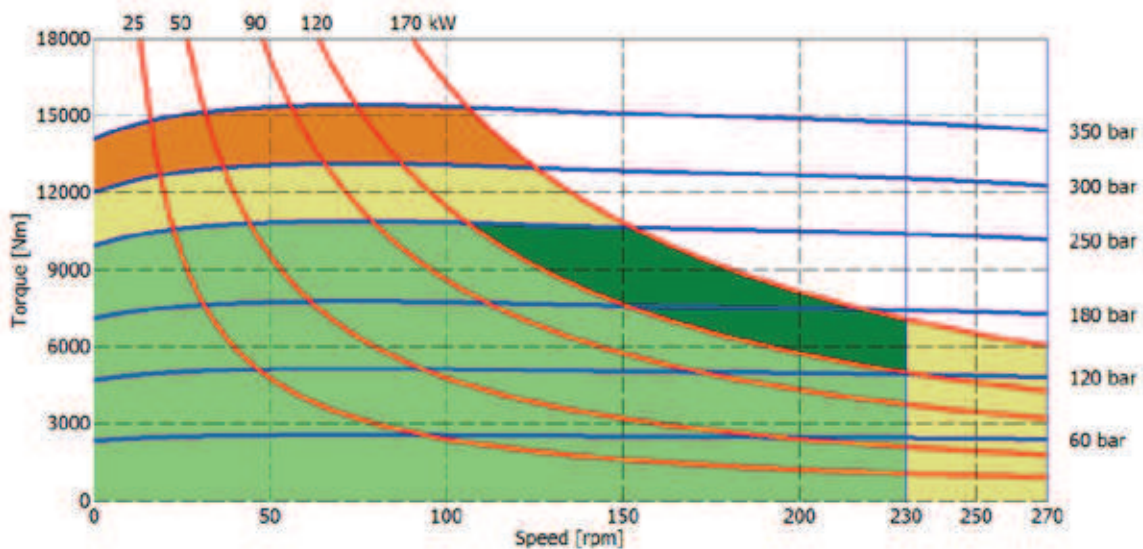
The data specified into the catalogue are for product description purpose only and must not be interpreted as warranted characteristics in legal sense. Italgrou**S.r.l.** reserves the right to implement modifications without notice. All partial or total reproduction and copy without written authorization of Italgrou**S.r.l.** is strictly forbidden.

IAM H55 - PERFORMANCE DIAGRAMS

2800 cc



3000 cc



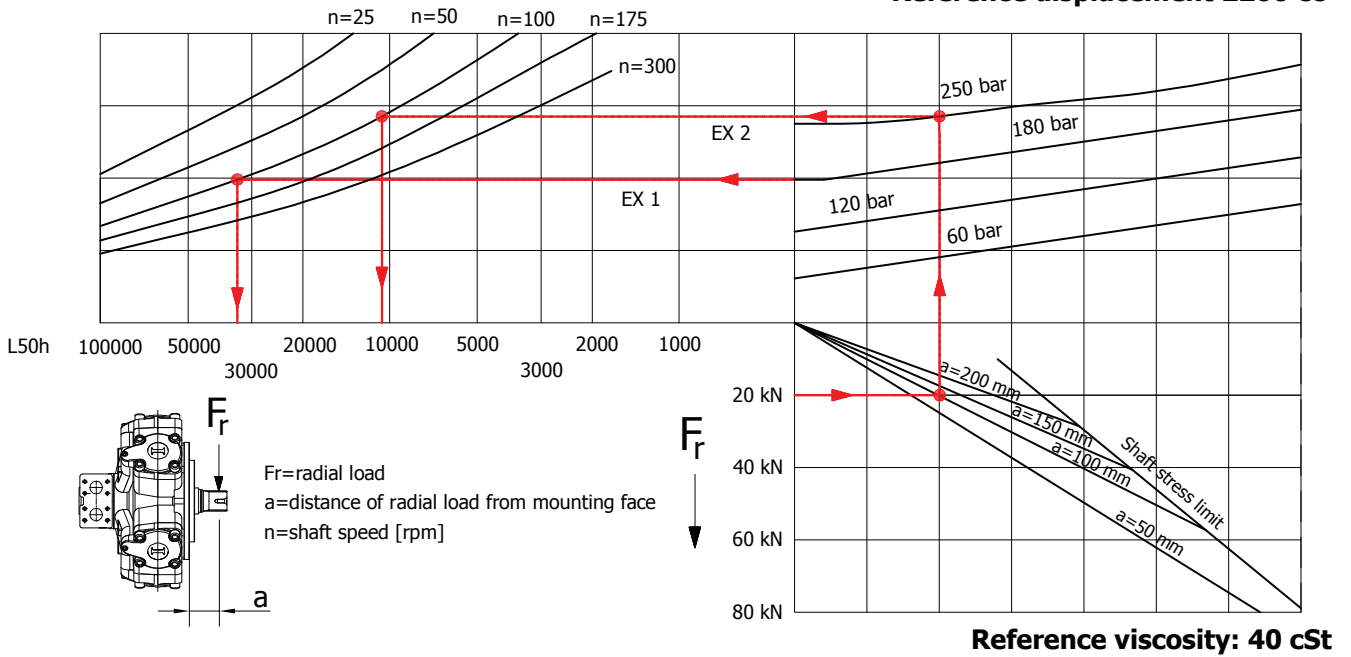
- Continuous operation
- Continuous operation with flushing or intermittent operation (see below for intermittent operation)
- Intermittent operation: permitted for a 15% of duty cycle, for 3 minutes maximum period
- Peak operation: permitted for very short periods (3-5 seconds every 10-15 minutes)

The above diagrams are referring to the hydraulic motor working with a fluid in ideal conditions (viscosity at 40 cSt). In case the working temperature increases and viscosity reach values under the recommended values (see hydraulic fluid recommendations) flushing must be performed or ISO oil grade must be changed. The working temperature must not overcome 70 °C.

The data specified into the catalogue are for product description purpose only and must not be interpreted as warranted characteristics in legal sense. ItalgrouP S.r.l. reserves the right to implement modifications without notice. All partial or total reproduction and copy without written authorization of ItalgrouP S.r.l. is strictly forbidden.

BEARING LIFE

Reference displacement 2200 cc



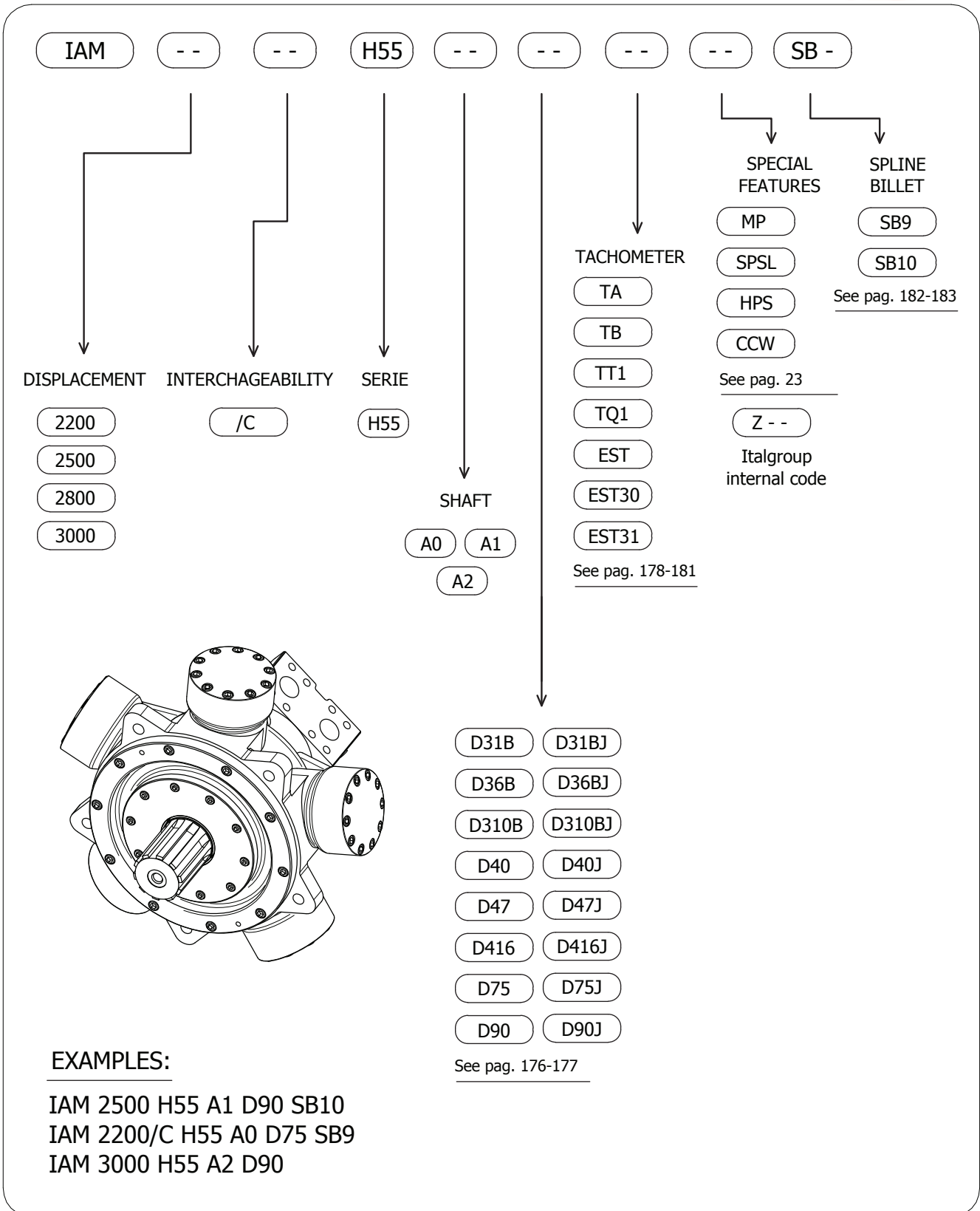
Example:

We suppose (EX1): $p=180$ [bar], $n=100$ [rpm]; we obtain an average lifetime of 33000 [h].

If we suppose (EX2): $F_r=20$ [kN], $a=100$ [mm], $n=100$ [rpm] and $p=250$ [bar] we obtain an average lifetime of 11000 [h].

The above data are referring to the IAM H55 series motors, displacement 2200 cc.

IAM H55 - ORDERING CODE



The data specified into the catalogue are for product description purpose only and must not be interpreted as warranted characteristics in legal sense. Italgroupp S.r.l. reserves the right to implement modifications without notice. All partial or total reproduction and copy without written authorization of Italgroupp S.r.l. is strictly forbidden.